



# ANTIQUE & ART AUCTION

## 12TH DECEMBER 2017





## Recent Auction Highlights



A spectacular walnut carved Black Forest long case clock.  
Achieved \$8,000



A pair of modern lady's 18ct. white gold diamond and rubellite drop earrings.  
Achieved \$3,600



An impressive modern lady's 18ct. white gold and diamond bracelet.  
Achieved \$16,500



An impressive fancy yellow multi-diamond and 18ct. yellow gold bracelet.  
Achieved \$17,000



A 19thC English pepper pot pistol.  
Achieved \$1550



Rare Crown Lynn medium size black glaze swan vase.  
Achieved \$950



A large and impressive early 19thC Chinese famille rose lidded jar.  
Achieved \$7,250



Norbertine Von Bresslern-Roth (Austrian 1891-1978).  
Achieved \$2,550



Historical items belonging to Captain Ernest E.M. Joyce together with an autograph album containing Shackleton's and other signatures from the 1907-09 British Antarctic Expedition.  
Achieved \$6750



An 18ct. gold and diamond ring.  
Achieved \$6,500



Don Binney, Pipiwharauroa.  
Achieved \$90,000



A rare and historically important George III lidded Scottish silver large tureen.  
Achieved \$6,500



A rare fine quality Regency piano top secretaire.  
Achieved \$2600



An uncommon Crown Lynn dark blue McAlpine refrigerator jug.  
Achieved \$3,050



A Rolex bi-metal Date/Just lady's wristwatch.  
Achieved \$2200



An impressive large Len Castle branch pot.  
Achieved \$5,000



An Italian alabaster bust of a young woman.  
Achieved \$3,900



Raymond Ching, 'Eurasian Sparrow Hawk'.  
Achieved \$4,750



A quality 19thC French walnut and ormolu bureau plat.  
Achieved \$14,000



A pair of Crown Lynn Whareana Maori Art 'Moko' book-ends.  
Achieved \$3,500



An estate white gold ladies 2.26ct diamond solitaire ring.  
Achieved \$15,000



An outstanding white gold, star sapphire and diamond pendant.  
Achieved \$8,000



An impressive 18ct gold, diamond and tourmaline dress ring.  
Achieved \$5,500



A set of extinct Irish elk horns and skull.  
Achieved \$28,000



A Clarice Cliff large Isis vase.  
Achieved \$2675



Banksy, 'Monkey Parliament', offset lithograph.  
Achieved \$2800



A pair of Chinese cloisonné vases.  
Achieved \$2,800



René Lalique 'Pinsons' blue stained bowl c.1933.  
Achieved \$2000



A rare N.Z. 1935 Waitangi Crown.  
Achieved \$5,500



A quality large Roy Cowan (CNZM MBE 1918-2006) salt glazed floor pot.  
Achieved \$12,000



Sydney Lough Thompson, 'Fishers at Work, Concarneau'.  
Achieved \$9,500

Invest in  
the future



www.antiquesaregreen.org

recycle the past.

NOTE: Hammer prices shown excluding premium.



### Antique & Art Catalogue

The final sale of the year is the perfect opportunity to pick up that hard to find and unusual Christmas gift. From various estates and private vendors, we have a wide array of boxes, kitchenalia, miniatures, walking sticks, toys, militaria, New Zealand historical and pottery, art glass, fine porcelain and china, Worcester, Moorcroft, etc. Oriental section with Chinese jade, porcelain, bronzes etc. The jewellery section starting 5pm; over 100 lots, spectacular diamond & emerald necklace & bracelet, gold & precious stone bracelets, earrings, rings, N.Z. medals, estate rings, wrist watches, clocks, perfume bottle collection, collectors silver incl. Tiffany silver spirit kettle, Persian rugs, a good selection of Georgian, Victorian, Colonial and Oriental furniture & decorator items, a collection of colonial chimney pots and more. The Fine Art includes entries by Louise Henderson, Toss Woollaston, Russell Hollings plus many more. Last chance to buy for Christmas.

#### Tuesday 12<sup>th</sup> December 2017 at 9.30am

Miscellaneous	1 - 109
Toys	110 - 127
Militaria	128 - 158
Artefacts, Tribal & NZ Historical	159 - 192
N.Z. Studio Art	193 - 215
Glass	216 - 226
Modern Movement	227 - 240
China & Porcelain	241 - 278
Oriental	279 - 340

#### Tuesday 12<sup>th</sup> December 2017 at 5.00pm

Jewellery	350 - 487
Clocks & Watches	488 - 500
Perfume Bottles	501 - 512
Silver	513 - 589
Persian Rugs	590 - 617
Furniture	618 - 718
Fine Art	719 - 829

**Please note all lots are illustrated in our online catalogue; [www.cordys.co.nz](http://www.cordys.co.nz)**

#### The sale may be viewed at the following times:

Friday 8 <sup>th</sup> December	9.00am - 5.00pm
Sunday 10 <sup>th</sup> December	11.00am - 3.00pm
Monday 11 <sup>th</sup> December	9.00am - 5.00pm

#### FRONT COVER LOTS



719  
W.J.Reed oil  
painting



414  
Art Deco diamond  
brooch



258  
Moorcroft  
inkwell



561  
Tiffany & Co.  
kettle



418 emerald  
& diamond  
bracelet

#### CATALOGUES \$12

A 15% percent buyers premium applies to this auction  
plus G.S.T. on premium = all up 17.25%  
Catalogue also online at [www.cordys.co.nz](http://www.cordys.co.nz).

### JOHN CORDY LIMITED

FINE ART AUCTIONEERS AND APPRAISERS

180 Great South Road, Remuera, Auckland 1051, New Zealand

P.O. Box 74071 Greenlane Phone (09)523-1049

Email [info@cordys.co.nz](mailto:info@cordys.co.nz) Website [www.cordys.co.nz](http://www.cordys.co.nz)



# The Catalogue

The figures given along side each lot are guide prices only.  
Measurements throughout are given in millimetres width x depth x height.  
This auction includes some entries from vendors "In Trade".

TUESDAY 12<sup>TH</sup> DECEMBER 2017

1<sup>ST</sup> SESSION AT 9.30AM

— MISCELLANEOUS —

**1**  
**A Victorian quality rosewood and brass inlaid jewel box**, the interior with blue velvet fittings, leather sectional tray removable to reveal open base. \$300

**2**  
**An early 19thC travelling vanity/doctor's box**, rosewood and brass inlay, rectangular form, the lid revealing a sectional compartment, two cut glass bottles remaining, the interior lid with a fold-down red leather panel, a secret drawer to the base, decorative inlaid brass strapping, corners and side handles. 335 x 255 x 185. \$350

**3**  
**An early 19thC rosewood jewellery box**, rectangular, raised on bun feet, cut brass inlaid borders, escutcheon and cartouche to the lid. 280 x 200 x 130. \$150

**4**  
**A Victorian coromandel wood vanity case**, the brass bound lid opens to reveal a lift-out tray of silver plate and glass jars and bottles, with various jewellery compartments below, a velvet ruched panel lifts down to reveal a manicure set. 290 x 160 x 130. See page 5. \$450

**5**  
**A Victorian brass bound rosewood writing slope**, the lid lifts to reveal traditional interior, with secret drawers. 400 x 240 x 150. See page 5. \$350

**6**  
**An impressive Victorian walnut writing slope**, brass bound, with military style side handles, lid lifts to reveal traditional interior with gilt tooled leather, with drawer to one side released by pin and presentation plaque to top to 'W.J. Hill'. 450 x 280 x 200. See page 5. \$500

**7**  
**A small Victorian brown leather sewing box**, of oval casket shape with brass mounts and chain lock. Length 165. With some accessories. \$100

**8**  
**A Victorian inlaid wood dressing table box with red lined interior**, the lid decorated with a tumbling block design. 300 x 140 x 100. See page 5. \$350

**9**  
**A 19thC Anglo-Indian Vizagapatam horn box**, sarcophagus form with fluted walls and lid, raised on conforming squat bun feet, the interior with lift-out fitted tray, ivory decoration, small compartment to the lid. 305 x 225 x 180. See page 5. \$3,000

**10**  
**A 1920s shagreen cigarette case**, with gilded interior. Length 100. \$80

**11**  
**A collection of book plates**, historical and local interest. \$100

**12**  
**The book 'Paul Storr 1771-1844 Silver-smith & Goldsmith'** by N.M. Penzer, this edition published 1971. \$110

**13**  
**The book 'François Linke 1855-1946 - The Belle Epoque of French Furniture'**, by Christopher Payne, published by the antique Collectors' Club 2003. \$200

**14**  
**Four N.Z. art and poetry publications**, 'Concrete Reality Poems by Tim Shadbolt', 'Scarlet Letters' by Gary McCormick, 1980, 'Pilgrim of the Arts 3 Vol 2 1977' and A Series of Allegations or Taking Allegations Seriously' by Barry Cleavin and A.K. Grant, 1988, signed. \$90

**15**  
**A Nucleonic Narrative About Love and War by Bill Millett**, Ltd Ed. by Sagittarius Press 1980, Auckland, N.Z. \$90

**16**  
**A collection of over 100 vintage N.Z. and other postcards**, includes humorous, etc. \$250

**17**  
**A framed 19thC French political cartoon**, from the front page of 'Le Don Quichotte'. 460 x 290. \$300

**18**  
**A Tallis map**, 'The World Shewing the Voyages of Capt. Cook...'. 240 x 340. \$150

**19**  
**A rare Georgian silhouette**, the seated woman reverse painted in black on a white ground, on the glass, some losses, in a later gilded frame 110 x 90. \$120

**20**  
**Two hand painted miniatures on ivory**, a portrait of Mrs Loscoe Bradley, artist's initials and in round metal frame, together with an unframed Victorian miniature of an angel. See page 5. \$250

**21**  
**A Victorian portrait miniature on ivory of a young man**, oval, gilt frame, the reverse with hand noted detail - 'A Son of Luelere?... now a Deputy ...1848'. 50 x 49. See page 5. \$200

**22**  
**Peter Adolf Hall (1739-1793) attributed**, an uncommon portrait miniature of a bare breasted woman, in formal period blue dress with coiffured hair, circular, in gilt frame, signed, labelled to the reverse in red ink with artist's detail. Diameter 75. See page 5. \$350

**23**  
**A 19thC French portrait miniature of a young woman**, sepia monochrome, frilled lace collar, the gilt oval frame with ribbon pediment and strut back. 110 x 72. Provenance: This and the fol-

lowing four portrait miniatures were all inherited through one family. See page 5. \$150

**24**  
**A 19thC portrait miniature**, similar to above. \$120

**25**  
**A portrait miniature**, similar to above. \$100

**26**  
**A 19thC portrait miniature of a gent**, oval form. 70 x 50. See page 5. \$100

**27**  
**A 19thC portrait miniature of a gent**, on ivory, soft tones. 70 x 50. \$120

**28**  
**Two Regency period watercolour portraits**, woman with ringlets and young girl. Lengths 200. Both in oval mounts with matching gilt frames. \$150

**29**  
**Two 18thC hand coloured engravings**, by Angelica Kauffman, 'The Judgement of Paris' and another, oval. 340 x 440. \$100

**30**  
**An early 19thC portrait miniature of a young girl**, she stands in a garden setting holding a watering can and a garden tool, reverse painted on glass, in oval gilt frame. 135 x 113. \$200

**31**  
**An Edwardian Sheraton Revival tray**, kidney shape, mahogany inlaid with satinwood fan and leafy tendrils framed by a gallery of alternating light and dark timber, two brass handles at the sides. Width 645. \$200

**32**  
**A small old oak coopered ale jug**, with brass handle. Height 280. \$80

**33**  
**A vintage oak and brass coopered plant pot**, with artificial moss and flower bulbs. 260 x 260. \$150

**34**  
**An old oak and brass coopered barrel**, 235 x 380. \$220

**35**  
**A large antique copper preserving pan**, shallow with rolled rim, side handles with rivets. Diameter 430. See page 5. \$250

**36**  
**A three-gallon stoneware keg**, stamped with 'Campbell & Ehrenfried Co. Limited. Albert Brewery, Auckland'. Height 460. \$300

**37**  
**A two-gallon stoneware keg**, stamped to the shoulder for 'C.L. Innes & Co. Ltd, Brewers, Hamilton'. Height 415. \$250

**38**  
**A Scottish two-gallon stoneware keg**, stamped to the shoulder 'The Distillers Company Ltd...., Sole Agents L.D. Nathan & Co., Auckland'. Small chip to rim. Height 400. \$150



39

**A London stoneware two-gallon keg**, impressed to the shoulder 'D. Campbell & Ehrenfried Co. Ltd, Auckland'. Height 410. \$250

40

**A Victorian Maypole Dairy Company 6lb butter crock**, with Maypole Dairy Company logo of children dancing around a maypole to the front, small repair to rim. See page 5. \$220

41

**Two Buttercup Dairy Company butter crocks**, both decorated with a cow and the Buttercup Dairy Company logo, 3lb and 5lb, with side handles, chip to rim of the 3lb crock. See page 5. \$200

42

**A Victorian Danish Dairy Company 2lb butter crock**, decorated with the dairy maid and the company logo, together with a Lipton 2lb butter crock, both made by Port Dundas Pottery, Glasgow. \$200

43

**A set of YCC stoneware condiment jars**, two-tone glaze with full logo and labels to front, stamped 'Best English Make' to reverse. Height 120. See page 5. \$250

44

**Two vintage kitchenalia items**, an advertising china and wood rolling pin, a Clarke's food warmer, together with a Dr Nelson's improved inhaler. Some faults. \$100

45

**Five vintage stoneware Virol graduated bone marrow pots**, all with logos to the front, ranging in height from 320 to 80mm. See page 5. \$200

46

**An early New Zealand blob top ginger-beer bottle**, impressed mark to the side for George Dixon, Cuba St, Wellington. Height 170. \$120

47

**Two early ginger beer crocks**, two-tone glaze, Bainbridge Brothers Auckland and Sharpe Brothers, Australia & New Zealand, chips to base of one, both with metal handles. Height 340. \$150

48

**Two early stone crocks**, both with metal carry handles, one J.F. Drake, Milton (Milton Potteries, Otago), the other Ponsonby Club Hotel, Auckland, some chips and cracks. Heights 330. \$150

49

**Two early salt glaze Tui vinegar crocks**, with impressed Tui brand and logo to each shoulder, both stamped with A. Murdoch & Co. Proprietors, Dunedin. Height 340. \$150

50

**A collection of lace irons**, the eight irons of various makes together with one miniature stand. \$150

51

**Ten antique house keys**. See page 5. \$120

52

**An impressive brass hanging Salter's**

**scale**, holding up to 300lbs, with steel hanger and hook. Diameter of dial 390. \$250

53

**A set of brass Salter's scale weighing up to 200lbs**, with steel hook and hanger. Diameter of dial 230. \$150

54

**A Salter's scale**, similar to above, weighing up to 150lbs. Diameter of brass dial 145. See page 5. \$120

55

**A brass Salter's scale**, rectangular form, weighing up to 30lbs, with steel hook and suspension ring. Length 400. See page 5. \$150

56

**A set of brass Salter scales similar to above**, weighing up to 20lbs. Length 310. \$150

57

**An early N.Z. 'Wilhous' spilt cane rod 'The Alnwick'**, made by N.Z. Sports Manufacturing Co., 205 Karangahape Road, Auckland, c.1910. \$200

58

**A rare Hardys lady's gaff**, two draw extension with weighted brass finial, variously stamped with maker's patent marks and logos. extending from 13" to 34". \$225

59

**A brass extendable fishing gaff**, with turned wood handle and wall mounted bracket. \$120

60

**A heavy double-sided ships' knife**, with brass mounts and wall mounted brass sheath. Length 350. \$100

61

**A 19th century naval three draw pocket telescope by Dolland**, London, brass with mahogany body, the smallest tube with maker's name. On later brass and Perspex stand. Extended 340 \$120

62

**A large English 7" wooden Scarborough sea fishing reel**, with bulbous wooden handles and brass fittings, in good working order. \$170

63

**A c.1940s good English 7" oak wood sea reel**, hand built and with original logo, brass fittings and good working brake, complete with line attached. \$190

64

**A c.1890s original Hardy Pralon black Japanned fly box**, cream interior, 15 metal flip up compartments with ivory slate details, complete with flies. 16- x 90 x 20. \$200

65

**A quality A.C. Farlow Pralon japanned black fly box**, with twin brass name plates and maker's details, 15 compartments with slide out plastic covers, including flies and tweezers. Size 160 x 90 x 30. \$180

66

**An antique c.1910 15" canvas Mallard drake decoy**, with wide body, glass eyes, interior body of cork chip and

kapok and wooden bill. Length 370. See page 5. \$200

67

**A c.1940s 13½" spoonbill wooden decoy duck**, handmade with tack eyes and lead insert to underbelly. Length 340. See page 5. \$130

67A

**A vintage wooden Blue Bill duck decoy**, a drake with upright high head, solid balsa body, redwood head with glass eyes, large wooden keel with lead weight, c.1930-40. \$250

68

**A modern five-drawer collector's cabinet**, each drawer with a selection of sea shells, the top with a piece of glass holding a display of more shells. 620 x 480 x 890. See page 5. \$350

69

**An old ship's binnacle compass**, the gimbal mounted compass housed beneath a domed brass housing with glazed viewing portal, raised on a teak cylindrical support cabinet from a timber plinth base, complete with steel navigation balls mounted to either side. Height 1570. See page 5. \$1,400

70

**An Edwardian carved oak banjo wall aneroid barometer**, with thermometer. Height 900. The dial marked G. & T. Young, Wellington, Dunedin, Oamaru and Timaru. \$350

71

**A vintage circular barometer**, with carved wood frame and circular ring suspension. Diameter 260. \$75

72

**A Chinese copper and brass navigation light**, 'Port', with 'Tung Woo, Hong Kong' maker's label. Height 600. \$225

73

**A Victorian brass sextant**, various lenses and filters, the mahogany case with label to interior for John Bruce of Liverpool 'Compass Adjuster'. \$650

74

**A vintage ship's wood framed double pulley**, rope bound with galvanised steel large eye. Length 500, some borer. \$190

75

**A Stanley No. 87 four-fold ivory 24" rule**, fully bound in German silver, complete with original pins. See page 5. \$500

76

**An Archbutt four-fold architect's 24" scale rule**, with German silver hinges and caps, original pins, marked with maker's details. See page 5. \$450

77

**A sperm whale tooth carved snuff mull as a Scottish gent with silver fitting**, natural curved form, fine detail of the bearded gent in traditional dress with sword, dagger, etc., the silver hinged lidded fitting of plain domed form, a small spoon included. Length 125. See page 5. \$550

78

**A pair of impressive large ornamental drinking horns**, the tips with traditional

silver plate and ball caps, the mouths with a wide silver plate neck and conforming lid, an engraved silver plate band to the middle of each horn secures it to a reeded column with spreading foot base. 650 x 700. See page 5. \$1,500

79

**Two old small whale's teeth**, natural curved form, one with losses to the tip. Length 110. \$150

80

**A large sperm whale tooth**, good patina of age. Length 165. \$300

81

**Two old sperm whale teeth**, good patina of age. Lengths 140. \$400

82

**Two old sperm whale teeth**, good patina of age, one with wear. Length 100 and 120. \$300

83

**A pair of scrimshaw bullock horns**, featuring portraits of gentlemen with flowering vines, one in military uniform. Length 300. See page 5. \$700

84

**An old leopard skin rug**, black fabric stitched backing. Some signs of age. Length 2110. \$750

85

**A vintage leopard skin rug**, claws attached, unbacked. Length 2370. See page 5. \$1,000

86

**A vintage taxidermy turtle**, the shell of good colour and patina, the head extended. Length 530. See page 8. \$450

87

**A vintage taxidermy turtle**, the shell in good condition, unpolished, the head extended. Length 530. \$350

88

**A European fruitwood handled walking cane**, the handle formed as a fruiting vine carved with a small boy sitting astride the open arch, the twisted stem carved with a section of castellation. Height 800. \$250

89

**A cane walking stick**, the finial surmounted by a silver-plated eagle's head with glass eyes, the stick with an alpine spike tip. Length 860. See page 8. \$300

90

**A walking stick with a dog's head handle**, the long-nosed head with glass eyes and unusual silver faced lop ears on simple birch shaft. Length 900. See page 8. \$325

91

**An unusual horn handle walking stick**, the handle formed as a leaping trout, fixed to a plain ash shaft. Length 940. \$250

92

**A European chamois horn handled walking stick**, mounted to an ebonised ferrule on a plain fruitwood shaft with alpinist's tip, owner's name painted to shaft 'Engelberg'. Length 880. \$250

93

**A 19thC ebonised rosewood walking stick**, the wooden shaft with marine

ivory ball finial with turned ribbed detailing. Length 850. \$225

94

**A 19thC walking stick**, the satinwood shaft with ivory handle, ivory ferrules and ivory tip. Length 920. \$250

95

**An Edwardian ivory handled and ebony walking stick**, the mildly curved handle of good size, the engraved silver collar hallmarked Chester 1903. Length 910. \$250

95A

**A vintage walking stick**, the curved silver plate handle in the form of a horse's head, plain shaft with brass ferrule. See page 8. \$250

96

**A c.1920 gilt metal and blue enamelled singing bird box**, the pull button mechanism operates the lid revealing a moving and singing bird, working. With key. 100 x 65 x 43. See page 8. \$1,100

97

**A pair of Art Nouveau bronzed spelter figurines**, both of women wearing long flowing dresses, one with a bird to her left hand, the other with a bunch of grapes, fine detail, each on a square dark marble base. Heights 205. See page 8. \$240

98

**A Victorian pub sign**, 'The Duel', the ebonised framed art work initialled L.I.J. and dated 1886. Overall 640 x 640. \$600

99

**A Victorian 'Lambert & Butler's High Class Cigarettes' shop display counter-top cabinet**, the mirrored top panel with maker's details, the narrow glass fronted body with five side drawers, the cigarette type detailed in gilt & blue to front, 'RISING SUN' etc, the plinth base with decorative moulding. 795 x 555 x 170. See page 8. \$750

100

**A Russian icon - The Mandylion** (the image of Christ 'made without hands'), oil and gilt on wooden panel. 350 x 310. See page 8. \$350

101

**A collapsible top hat**, in original box and in excellent condition. \$120

102

**A 19thC wooden crucifix**, with figure of Christ, on conforming wooden stand. Height 800. \$350

103

**A vintage Scottish sporran**, the leather holder with traditional horse hair, leather strap and coarse hair tassels, with strap. \$120

104

**A large lump of unpolished N.Z. kauri gum in three pieces**. Weight 4.37 kilos. Together with a photograph of Clifford Lea Petterson who dug the gum between 1913 and 1917 near where he lived in Taupiri, north of Huntly. It has remained in the family ever since. Together with a photograph of Clifford Petterson holding kauri gum. \$350

105

**A large kauri gum boulder**, in golden honey and butterscotch tones, one side polished and the other in the rough natural state. Width 400. Weight 9.6kgs. \$850

106

**A pair of small Victorian spill holders**, in the shape of lady's boots, encrusted with shells. Height 110. \$100

107

**Seven silver band medallions awarded to R.L. Horsham**, each presentation engraved 'Tenor Trombone', etc., c.1950/60s. \$100

108

**A vintage Rolleiflex camera**, original stitched leather case. \$350

109

**Two Pitcairn Island dolphin half models**, carved wood, wall mounted, both with inlaid eyes. Length of each 330. \$120

## TOYS

110

**A pair of early 1900 antique English police money banks**, 'Every Copper Helps' policeman and a rare 'Love a Copper' lady, original paint on lady and impressed registry numbers on both. Heights 160. See page 8. \$200

111

**A rare US. c.1880 mechanical 'Bull Dog Bank' money bank**, by J & E Stevens Co., with original paint. Missing glass eyes and coin trap, but in working order. Height 190. See page 8. \$450

112

**An antique tin plate Royal Trick Elephant mechanical money box**, c.1912. Made in Germany. Length 170. \$220

113

**A good 1960s Kingsbury Toys U.S. Army Artillery truck**, Studebaker cab version, working clockwork drive, swivelling gun and elevating barrel, complete with original wooden ammunition. Length 400. See page 8. \$120

114

**A 1950/60s N.Z. made Hercules Toy brand tank**, original paint, tracks and label. Length 240. \$500

115

**A vintage English 'All Metal Valiant Clockwork Battleship'**, the Aliant, in original condition with box. Box length 346. See page 8. \$250

116

**Two vintage Britains boxed toys**, includes: 'Beetle Lorry and Britains 4.5" Howitzer & Limber', both in good original boxed condition. See page 8. \$180

117

**A very good boxed Crescent Toys 'Long Tom' artillery gun #155**, complete with traverse carriage, box in good condition. Length 280. \$100

118

**A c.1950/60 'The Web Miniature Lawn-mower for Children Made in England'**, original green and red paint finish, label and embossed maker's details. Height 600. See page 8. \$650



4



5



6



8



20



21



22



23



26



9



35



40



41



43



45



51



54



55



66



67



68



69



75



76



78



83



85



77



119

**An old Massey Ferguson TE-20 die-cast toy tractor with plough**, maker unknown, the original front and rear tyres with maker's name 'Goodyear', two-piece plough. Length overall 460. See page 8. \$1,000

120

**A rear German Bing tin plate aero-plane**, spinning from a control tower, original paint finish, key-wind mechanism, lithographically printed maker's details. Width 675, height of tower 255. See page 8. \$1,200

121

**An early 20thC Lehmann Zig-Zag No. 640 tin wind-up toy**, printed maker's details including the latest patent date of 1907, the two seated figures operating the vehicle, working, the red jacketed figure missing his right arm. See page 8. \$1,000

122

**A vintage Japanese Cragston 'Mambo' Jolly Drumming Elephant toy**, #50203, battery powered and with lighted eyes. Elephant excellent, box in poor condition. Height 220. \$100

126

**Two very good vintage Dinky and Dinky Duplo cars**, an Austen Se7en Countryman #99 and an Austin taxi #67. Lengths 70 and 55. \$120

123

**A vintage 1972 radio-controlled Kenner Star Wars R2D2 model**, complete with control unit and aerial, box in worn condition. Height 200. \$150

124

**A very good boxed Dinky Refuse Wagon #252**, complete with crank. Box has one flap separated. Length 100. \$90

125

**A large boxed Coca-Cola model pedal plane**, with enamel and chrome finish. Plane and box both in excellent condition. Length 320. \$200

126

**Two very good vintage Dinky and Dinky Duplo cars**, an Austin Se7en Countryman #99 and an Austin taxi #67. Lengths 70 and 55. \$120

127

**A vintage Japanese tin plate Santa on Sleigh battery toy**, the reindeer and Santa's head of hard rubber, the tin plate sleigh lithographically printed with various toys. Length 425. See page 8. \$100

## MILITARIA

128

**Two WWI war medals awarded to Private W.F. Simpson**, with ribbons attached. \$120

129

**A WWI standard pair of medals**, engraved presentation to '342222 SPR. W. Greenfield. R.E.'. \$120

130

**A Nazi German SS Eight Years Service Award**, bronze, with replacement

ribbon, extremely fine unmarked but textbook example by Deschler & Sohn, München. Diameter 38. \$300

131

**A Nazi German 'Civil Service Faithful Service Medal'**, silver and enamel with original ribbon, for civilian employees of the public service awarded for 25 years service. \$100

132

**German WWI Iron Cross 2nd class**, and Nazi German Luftschutz service medal. \$100

133

**A 19thC scrimshaw powder horn**, fashioned from an oxen horn, engraved with figures of two women, one on horseback. Length 360. \$300

134

**A 19thC scrimshaw powder horn**, formed from an oxen horn, engraved with a portrait of a sailor and a woman, base and stopper fittings absent. Length 340. See page 8. \$175

135

**John Allcot**, 'H.M.A.T. Orontes', watercolour, signed and entitled. Note: the 'Orontes' was taken over by the British Admiralty and converted to a troopship, she carried Australian Imperial Force (AIF) servicemen to Europe. Some toning. 180 x 270. \$225

136

**Official History of New Zealand in the Second World War 1939-45 '27 (Machine Gun) Battalion'**, by Robin Kay, published by War History Branch Dept of Internal Affairs Wellington, 1958. pp. 543, red cloth binding and complete with illustrations, photos and five folding maps. In very good condition. \$100

137

**Official History of New Zealand in the Second World War 1939-45 '24 Battalion'**, by R.M. Burdon, published by War History Branch Dept of Internal Affairs Wellington, 1953. pp. 361, red cloth binding and complete with illustrations, photos and five coloured folding maps. In very condition, minor staining to cover. \$150

138

**Official History of New Zealand in the Second World War 1939-45 '22 Battalion'**, by Jim Henderson (1958) and 'Italy Volume I The Sangro to Cassino' by N.C. Phillips (1957), pp. 487 and 387, red cloth binding and both complete with illustrations, photos and coloured folding maps. 'Italy' complete with dust jacket. Minor staining to binding of 22nd Battalion. \$150

139

**Official History of New Zealand in the Second World War 1939-45 '20 Battalion and Armoured Regiment'**, by D.J.C. Pringle and W.A. Glue (1957) and '18 Battalion and Armoured Regiment' by W.D. Dawson (1961), pp. 631 and 676, red cloth binding and complete with illustrations, photos and coloured folding maps. In good condition (some staining to covers) and dust jacket (fair) to '18 Battalion'. \$100

140

**Official History of New Zealand in the Second World War 1939-45 '28 (Maori Battalion)'**, by J.F. Cody (1956) and 'Supply Company' by P.W. Yates (1955), pp. 514 and 371, red cloth binding and complete with illustrations, photos and coloured folding maps. In very good condition (two small water spots to 'Maori' cover). \$150

141

**'The Maoris in the Great War'**, by James Cowan, published by the Maori Regimental Committee 1926, pp. 180, brown cloth binding, complete with illustrations, plans and maps (some folding). The book details 'A History of the New Zealand Native Contingent and Pioneer Battalion Gallipoli, 1915, France and Flanders, 1916-1918'. In very good condition. \$200

142

**Official History of New Zealand in the Second World War 1939-45 'New Zealanders with the Royal Air Force Vol. II and III'**, by Wing Commander H.L. Thompson (1956) and 'The Royal New Zealand Navy' by S.D. Waters (1956), pp. 409, 483 and 483, blue cloth binding, dust jackets (one fair) and complete with illustrations, photos and coloured folding maps. In good condition. \$0

14150

**'White Wings' Volume I and II**, by Sir Henry Brett, Brett Printing Company 1924 and 1928, pp. 259 and 368, blue cloth binding and dust jacket (fair) to Vol. II, detailing 'Fifty Years of Sail in the New Zealand in the Trade 1850 to 1900' and 'Founding of the Provinces and Old Time Shipping. Passenger Ships from 1840 to 1885'. In overall good to very good condition. \$150

144

**A vintage WWI panoramic photo of "A" Coy: The N.Z. Command Depot, Codford May 1918'**, entitled on the photograph and detailed 'No. 2338, Photo by Panora Ltd.' 180 x 760, in original oak frame under glass, together with four other military photographs from the same family. \$200

145

**A British flintlock Volunteer's or North-west Indian trade musket by John Edward Barnett**, with 50% smoothbore part octagon barrel, the lockplate marked Barnett/London, simple steel furniture, walnut stock, right side of buttstock marked Barnett/Minories/London. Ramrod absent. \$500

146

**A Baker muzzle loading shotgun**, percussion cap, octagon to polygon to round 31" barrel, with ramrod, buttstock with silver presentation shield. Copper sheath repair to forestock, underbarrel rib loose \$120

147

**A Land Wars period Snider .577 cal 2-band carbine**, the rolling block with original nipple protector, broad arrow WD mark, lock marked 'Enfield 1861',



barrel with matching marks, the butt stamped Enfield, brass butt plate marked 'N.Z. 1663'. Original cleaning rod. License required. Length 1020. See page 8. \$500

**148**

**A centrefire howdah pistol**, attributed to Adams, .450 cal. 10 $\frac{7}{8}$ " shallow rifled barrels with flat rib, round bodied underlever action, peninsula back locks are mounted with long nosed hammers with tall spurs, and with back sliding safeties that engage at half cock, the trigger guard tang extends to a plain steel grip cap. Grip is nearly fully checkered matching the short checkered forend. The attribution to Adams comes from a collector who saw this pistol split from the companion game rifle sold at auction in Wellington in the 1970s. (Endorsed arms license required) See page 8. \$250

**149**

**A 12g double barrel shotgun**, 30" damascus barrels marked A & W McCarthy on engraved rib, engraved locks and open hammers, black walnut stock with checkered Prince of Wales grip, horn cap and butt, forestock with horn tip (some slivers). Purchased by the vendors grandfather in 1902 from McCarthy's gunsmiths Dunedin. In associated canvas covered case. License required. \$250

**150**

**A 12g double barrel shotgun**, 30" barrels marked I. Hollis & Sons, London on engraved rib, named engraved locks, plain open hammers, walnut stock with checkered pistol grip, horn butt cap, forestock with horn tip (some slivers). In leather case. License required. \$250

**151**

**A Remington 'Fieldmaster' .22 cal rifle**, S, L or LR, model 121, slide action tubular magazine, 1936-54. License required. \$120

**152**

**A single shot centre-fire Victorian gallery pistol**, with a double position cocking hair trigger mechanism. Approx .308 cal, octagonal barrel, checkered walnut grip. Overall length 300. Endorsed license required. \$600

**153**

**A WWII American trench wing tip and projectile display**, the aluminium aeroplane propeller tip prick engraved with the Great Seal of the United States above 'Bttry.D.3rd.D.Bn. F.M.F. Pearl Harbour 12/7/41 Midway 6/4/42 Tulagi 8/9/42 Guadalcanal 9/11/42', mounted on a board with two brass projectiles, one engraved with the American flag, the other with palm trees on an island and 'Soloman Islands'. Together with a card detailing provenance: 'WWII Momento Created by U.S. Marine Corps 1st Div. Marine Stationed here in N.Z. 1942. Item has been in N.Z. ever since...'. Height 340. See page 8. \$500

**154**

**A mid-20thC Folk Art calendar**, made from the 'Total Rounds Fired' counter,

from the H.M.N.Z.S. Royalist 1956-66, the brass counter with adjustable side knob, the calendar months held in a slide, pen receptacle to the front, mahogany mount. 230 x 180. See page 8. \$500

**155**

**A 19thC Saxony officer's lancer cap**, 'Tschapka', black lacquered with distinctive square top, adorned with hair plume, crowned cross helmet plate in silvered and gilded metal, fish scale strap, brass edge to the visor, original leather interior. See page 8. \$2,000

**156**

**A German WWI Colonial Services flag**, ex. Samoa. Provenance: Captured in Samoa. 1870 x 1160, one tear and some marking consistent with age. See page 8. \$2,000

**157**

**A WWI Turkish flag**, machine stitched red and white. Provenance: Reputedly captured in Palestine. 1820 x 870. See page 8. \$850

**158**

**A large old Indonesian kris**, straight blade, the wooden handle with plaited copper wire grip and metal banded, wooden scabbard. Blade length 580. See page 8. \$200

## — ARTEFACTS, TRIBAL — & NZ HISTORICAL

**159**

**A modern sandstone carved canoe figure head**, '(Nguzunguzu)', by Steven Gwaliasi, finely carved traditional form with stylised head. 210 x 100 x 260. Gwaliasi of Solomon Island descent now lives on the West Coast, N.Z. \$160

**160**

**Steven Gwaliasi carved marble sculpture 'Head & Hands'**, dark grey tone with pale inclusions, the thumbs wrapping to the top of the head, named in ink to the base. Height 215. \$350

**161**

**Steven Gwaliasi two carved hardstone items**, a stylised plain form head and a tribal mask pendant. Heights 135 and 73. \$120

**162**

**Two small Levi Bergstrom carved wooden spoons**, hook form handles. Length 67. \$120

**163**

**An old Solomon Islands fishing lure**, the mother-of-pearl body with lashed horn barb, bead highlights extend from the lashing. Length 75. \$90

**164**

**An old Samoan tapa cloth**, geometric repeating decoration in dark and mid-brown tones. 1500 x 1000. \$120

**165**

**A Papua New Guinea tribal mask with pigment decoration**, tiny cowrie shells, fibre and cassowary feathers. Length 450. \$150

**166**

**Three old Papua New Guinea mask**

**type carvings**, small size, coloured ochre pigments. The largest length 445. \$110

**167**

**A large Lombok pot**, made in Masa Basik, terracotta coloured glaze with fine black sponging, the shoulder decorated with triangles and stripes in a lighter tone. 360 x 540. \$150

**168**

**A vintage Moroccan Berber necklace**, comprising seven large silvered metal beads, one with enamelled decoration, six large phenolic resin beads and two moulded red amber-style beads, on old blue plaited cord terminating in two enamelled silvered metal tassels. \$100

**169**

**A vintage Moroccan Berber necklace**, comprising five decorative silvered metal beads one set with five pieces of lapis, alternating black and white glass beads with small round silvered metal beads, with two yellow resin beads, on old plaited cord. \$100

**170**

**A collection of eight moa vertebrae bones**, good condition with minimal erosion. \$200

**171**

**A good large Charlie Wilson carved pounamu hei tiki**, mid/dark-green colourway, finely detailed with the head turned to the left shoulder, ears evident, inlaid paua shell ring eyes, right hand to the chest, the left to the left thigh. Note: Charles Raponi Wilson has been carving since the 1960s and is recognised as a leading carver of hei tiki, drawing inspiration from ancestral taonga. In 2009 he was commissioned by N.Z. Post along with other leading N.Z. artists to carve a hei tiki to feature on its annual Matariki stamp series. In 2010 his design was selected to feature on N.Z.'s most valuable legal tender coin - the 1oz. gold coin. Length 115. See page 8. \$2,200

**172**

**A pounamu hei tiki pendant**, stylised form with heart form mouth to left shoulder, polished finish, pointed top to head. Length 98. \$350

**173**

**A large greenstone (serpentine) river worn boulder**, approximately oval form, the top with broad polished sections showing good dark green mottled tone with pale highlights. 50+ kilos. 600 x 450 x 180. \$650

**174**

**A Maori carved stylised canoe prow**, the figural form with curving tongue and multiple other entwined scrolls and figures. Length 1270. \$500

**175**

**Two George Baxter oil colour prints**, 'The Reception of Rev. J. Williams at Tanna...' and 'Massacre of the Lamented Missionary the Rev. J. Williams, and Mr. Harris', each framed and glazed. 210 x 320. \$250



86



89



90



95A



96



97



100



110



111



99



113



115



118



119



116



121



127



134



120



147



148



153



154



155



171



192



156



157

- 176**  
**A 19thC oil sketch of a weka**, initialled F.W. 115 x 145. \$300
- 177**  
**An early 20thC German chromolithograph**, 'Ornamentale Tatowierung'. 210 x 135. \$150
- 178**  
**George French Angus 'Weeping over a Deceased Chief'**, coloured plate from the 'The New Zealanders Illustrated'. 330 x 430. \$200
- 179**  
**C.F. Goldie 'A Hot Day' (Portrait of Pātara Te Tuhī)**, vintage chromolithographic print, printed signature centre right. Oval, in oak frame. Old label verso. 400 x 325. \$200
- 180**  
**A pair of C.F. Goldie books by Alister Taylor**, published 1977, 'His Life & Painting' and 'Prints, Drawings & Criticism', both in original Solander cases, Ltd. Ed. \$700
- 181**  
**A large format sepia vintage photograph**, of Russell, Bay of Islands, c.1920, in oak frame with oak mat under glass. 310 x 550. \$200
- 182**  
**A vintage C.F. Bell photograph**, the paddle steamer 'Wakaterē in Mansion House Bay, Kawau Island', signed and dated 1911. 260 x 370, in original oak frame. \$200
- 183**  
**A vintage photograph reprint**, a yacht moored off the beach at Mouketekete Island. In original oak frame. 325 x 220. \$200
- 184**  
**A vintage photograph**, possibly by William Archer Price, Ferry steamers and pleasure craft in Mansion House Bay, Kawau Island. Inscribed verso 'L.G. Reeves...' Lawford Godfrey Reeves bought Mansion House in 1923 and lived there until 1947. In original oak frame with oak mount. 300 x 380. \$200
- 185**  
**A selection of items from Mansion House**, Kawau Island, includes two ashettes, three cups, two saucers, silver plate teapot and sugar tongs, all marked 'Mansion House'. The china made by Crown Lynn. Some damage. \$150
- 186**  
**Eight pieces of Mansion House china**, two plates, two demitasse coffees and saucers, a large jug and small cream jug, seven of the pieces by Crown Lynn. Some damage. \$150
- 187**  
**Nine pieces of Mansion House china**, includes four plates, a bowl, toothpick holder and three cups, all with 'Mansion House' logo and made by Crown Lynn. Some damage. \$150
- 188**  
**John Logan Campbell 'Poenamo'**, published by Williams and Norgate 1881, 1st edition, pp.339, green cloth binding, complete with 16 illustrations and fold out map, signed and dated by Logan Campbell 1905, with numerous additional photos, letters, a description of how the signature was obtained and Campbell's death notice. Minor weakening to the spine but otherwise good condition. \$400
- 189**  
**A 1970s vintage 'Cook St. Market' poster**, promoting 'A Rare Blend of Ztuff'. Published by Zpaceworkz... Auckland West... (Plan-it Earth). 600 x 445. \$150
- 190**  
**A. Whistler 'Old I.G.A. Store, Middle St Ponsonby'**, ink and watercolour, signed and dated 1975, entitled verso. 345 x 390. \$100
- 191**  
**A small fine quality 'fern' wood pin cushion**, on short pedestal support. Diameter 90. \$80
- 192**  
**A N.Z. colonial silver mug by 'B. Petersen & Co.'**, of good size and finely engraved with fern leaves flanking a triple initial monogram above a maidenhair fern spray, stamped maker's marks to the base, gilded interior. Height 116, 327gms. See page 8. \$850
- N.Z.STUDIO ART ————
- 193**  
**A large white Crown Lynn swan**, impressed mark and number to base. \$200
- 195**  
**A vintage Crown Lynn yellow glazed McAlpine refrigerator jug**, ribbed tall rectangular section form with 'McAlpine' in relief to each side. Height 225. \$250
- 196**  
**A vintage Crown Lynn yellow glazed McAlpine refrigerator jug**, ribbed tall rectangular section form with 'McAlpine' in relief to each side. Tiny frit to rim. Height 225. \$200
- 197**  
**A vintage Crown Lynn white glazed McAlpine refrigerator jug**, ribbed tall rectangular section form with 'McAlpine' in blue in relief to each side. Hairlines to rim. Height 225. \$150
- 198**  
**A vintage Crown Lynn green glazed McAlpine refrigerator jug**, ribbed tall rectangular section form with 'McAlpine' in relief to each side. Height 225. \$300
- 199**  
**A Crown Lynn Specials Department vase**, banded mottled glaze. Height 145. \$110
- 200**  
**A Crown Lynn sculpture of a stylised standing fawn**, dark brown glaze, tapered long legs to an oval base, printed tiki mark and impressed number to base. Height 250. See page 13. \$180
- 201**  
**A Crown Lynn stylised standing horse**, black and dark red brown dominant glaze, printed and impressed mark #.190. Height 180. See page 13. \$170
- 202**  
**Two Crown Lynn stylised donkey sculptures**, variable grey glaze, unmarked. Height 127 and 100. \$110
- 203**  
**Ann Wynn Reeves/Ann Clark glazed pottery house sculpture**, square bottle type form with 'door' opening to the base, lustre glazed, marked to the base 'AC' and dated '73. Height 210. \$250
- 204**  
**A Luke Adams brown glazed teapot**, oval tapered body. Height 130. See page 13. \$120
- 205**  
**Olive Jones small vase with sculpted lizard**, the lizard in relief to the side, green glaze with brown highlight, incised signature to base. Diameter 100. See page 13. \$160
- 206**  
**A good Graeme Storm large spherical vase**, cut decoration of large florals, dark red/brown glaze with cutaway decoration showing the stoneware body. Height 265. \$300
- 207**  
**Three c.1964 Barry Brickell Kereru**, variable pale to deep green metallic type glaze, some losses to glaze and one with chip to underside of tail. Provenance: Purchased from Barry Brickell about 53 years ago at Driving Creek, Coromandel. Our vendor owned the neighbouring property to Barry's and sold him some of his property allowing Barry to build a section of the railway. Our vendor notes that Barry was inspired by so many wood pigeons in the area, he did make others. Heights 245, 235 and 185. See page 13. \$600
- 208**  
**A Marilyn Wiseman square dish**, early 1980s, artist's mark under the base. 320 x 310. \$100
- 209**  
**A Marilyn Wiseman square dish**, early 1980s, artist's mark under the base. 320 x 310. \$100
- 210**  
**A Garry Nash studio glass vase**, ovoid shape, sapphire blue with red everted rim, signed and dated '95. Height 200. \$150
- 211**  
**A New Zealand Garry Nash green chip vase**, ovoid shape, signed and dated '14. Height 215. See page 13. \$525
- 212**  
**A Garry Nash 'Blue Reef' bowl**, signed and dated '17. Diameter 210. \$220
- 213**  
**A Garry Nash 'Red Reef' bowl**, coloured using selenium and opaline, signed and dated '17. Diameter 235. See page 13. \$300
- 214**  
**Geoff Irving 'Forces of Light and Darkness'**, turned and decorated totara, signed, entitled and detailed to the base. Height 385. \$120
- 215**  
**A John MacInven 'Fish Bowl'**, Ceremo-



nial Bowl Series IV Western Red Cedar embellished with acrylic wax, signed and dated '94. Diameter 455. \$450

## GLASS

216

**Six antique glasses**, various shapes and patterns, includes cordial and sherry. \$120

217

**Sixteen Waterford crystal glasses**, various patterns and shapes including Alana wine goblets, Sheila wine, sherry and liqueur glasses. \$450

218

**A Continental cave à liqueur**, the fruitwood framed case with bevelled glazed panels and hinged lid enclosing a set of four decanters and sixteen liqueur glasses, the glasses stand on a tray fitted above the shoulders of the decanters. 420 x 320 x 240. See page 13. \$800

219

**Six long stem Bohemian sherry glasses**, in various colours and patterns. \$120

220

**Eight Bohemian glass long stemmed wine goblets**, of various colours and patterns. \$200

221

**Seven Bohemian glass long stemmed wine goblets**, similar to above. \$180

222

**A Murano free form art glass vase**, the unusual design with an aperture to the body, free-form black and gold on a red ground. Height 270. \$250

223

**A Murano glass bird**, the body in yellow and red stripes with teal spots, long beak and frilled wings, on glass stand. Height 290. See page 13. \$180

224

**An impressive large Murano glass swan**, the body in a pink stripe with a black neck. 360 x 300. See page 13. \$280

225

**A heavy crystal Daum vase**, spreading hexagonal form, mark to side. Height 210. \$150

226

**A Whitefriars paperweight decorated to the interior with coloured canes**, with original paper label. \$150

## MODERN MOVEMENT

227

**A René Lalique opalescent 'Poissons' bowl**, the bubble centre surrounded by 12 swirling fish, etched 'R. Lalique' mark. Diameter 300. See page 13. \$600

228

**A Lalique crystal 'Roscoff' large fish bowl**, pre-1978, moulded in relief with a mass of bubbles surrounded by 20 fish, engraved signature to the centre. Diameter 355. See page 13. \$300

229

**A Lalique glass 'Roscoff' large bowl**, as above. \$300

230

**A René Lalique 'Fleurons' opalescent glass plate**, stylised swirling flowerhead decoration, etched mark to base. Diameter 274. See page 13. \$350

231

**An Art Nouveau style silver plate mirror frame**, the woman leaning forward, whiplash and floral highlights. 255 x 190, possibly WMF. \$250

232

**An Art Nouveau WMF silver plate vase**, tapered triangular section with semi-naked maiden playing a harp, no liner. Height 185. \$250

233

**A large WMF Art Nouveau silver plate lamp with a winged figure**, he stands with lyre harp, a child to the swirling whiplash base, the two curving arms supporting the gallery with Vaseline glass shade. Height overall 730, stamped maker's mark to base. See page 13. \$1,400

234

**A stylish WMF silver plated oval table dish**, with fixed handle, pierced geometric decoration and original clear glass liner. Length 210. \$150

235

**An Art Deco figured table lamp**, modelled as a female athlete kneeling and holding the lamp fitting in raised hand (globe absent), original cold painted spelter on alabaster base. 280 x 330. \$250

236

**A Tudric pewter and enamel clock designed by Archibald Knox (British 1864-1933)**, produced for Liberty & Co., pod and tendril design in relief, the copper dial with enamelled Roman numerals and centre, two circular enamelled plaques towards the base, likely presentation engraved 'To Arthur Marshall Esq. from The Otago University Students' Association Capping 1924', strut back, stamped maker's marks including model # 0370 and retailer 'Dawsons Limited Dunedin N.Z.' Working. Small enamel loss to dial. Height 207. See page 13. \$2,500

237

**A rare Liberty & Co. Cymric silver four-piece tea service**, squat circular form, mildly hammered, forked strapping to the handles. Birmingham 1907 with Liberty & Co. maker's mark. 720gms. See page 13. \$1,800

238

**Bernard Leach stoneware pottery vase**, impressed ovoid form, brushed dark glaze on the pale grey ground, two encircling bands framing, impressed potter's mark, together with the St Ives mark. Provenance: From a major Hawkes Bay Collection, further details available on request. Height 130, diameter 145. \$1,800

239

**A New Zealand copper Arts and Crafts plaque**, decorated with a stylised head in profile with a fish or lizard entwined in the hair, attached a turned

wood frame, by Miss Alice Cozens. Diameter 305. \$120

240

**A New Zealand copper Arts and Crafts tray**, the interior with hand beaten effect, the wide rim decorated with mythical sea creatures, by Miss Alice Cozens. Diameter 350. See page 13. \$150

## CHINA & PORCELAIN

241

**A Moorcroft green lustre vase**, with impressed mark to base. Some slight spotting. Height 310. \$500

242

**A Moorcroft 'Pansy' double handled large vase**, impressed mark to base. Height 170. \$1,200

243

**A Moorcroft tangerine candy biscuit barrel**, from Kirkcaldie & Stains Exhibition by Emma Bossons, special to members only, ltd. ed. 114/150, signed and in box. Height 120. See page 13. \$450

244

**A Moorcroft 'Kate Sheppard Camellia' vase** by Emma Bossons. Ltd Ed. 2/100, impressed marks and signature to base, boxed. 105. See page 13. \$400

245

**A small Moorcroft 'Hibiscus' vase**, one red and one yellow hibiscus, paper label and W. Moorcroft signature to base. Height 90. \$200

246

**A rare Moorcroft 'Plum' inkwell**, marked with painted initials, affixed Moorcroft paper label and retailer's label: John Bates & Co. Ltd, Christchurch. Dunedin Exhibition 1925-26. Height 70. See page 13. \$4,000

247

**A rare Moorcroft McIntyre potpourri jar**, 'Cornflower' design, signature to base, c.1913-14. Height 90. See page 13. \$1,200

248

**A Moorcroft small vase**, 'Iris' design, impressed marks to base. Height 90. \$200

249

**A framed Moorcroft plaque**, kiwifruit and grapes. Designer Emma Bossons. Ltd Ed. 28/75, boxed. Diameter 265. \$500

250

**A Moorcroft 'Harvest Mouse' vase**, N/Ed. 14 signed by Emma Bossons. Signature and impressed marks to base. Boxed. height 215. See page 13. \$800

251

**A Moorcroft 'Lodge Hill' miniature vase**, designer Emma Bossons, signature and impressed marks to base. Boxed. Height 60. See page 13. \$200

252

**A Moorcroft plate decorated with a fantail**, signed by Philip Gibson, dated 2004. Signature to base. Boxed. Diameter 220. \$250

253

**A Moorcroft 'Waving Corn' vase**, c.1930, signature to base. Height 95. See page 13. \$500

254

**A small Moorcroft 'Pomegranate' patterned squat shaped vase**, design M32, c.1913-1925, signature and impressed mark to base. Height 70. \$220

255

**A small Moorcroft 'Orchid' vase**, impressed mark to base. Height 90. \$180

256

**A small Moorcroft 'Leaves and Berries' vase**, c.1924-34, impressed mark and label to base. Height 100. See page 13. \$400

257

**A Moorcroft 'Tudor Rose Blue' vase. Special edition**, signed J. Moorcroft and date to base. Height 135. \$150

258

**A Moorcroft 'Hazeldene' landscape inkwell**, signature to base and Rd No. 397964. Height 65. See front cover and page 13. \$5,000

259

**A Moorcroft McIntyre 'Pansy' double-handled vase**, back stamp and signature to base, c.1911. Height 200. See page 13. \$5,000

260

**A Moorcroft baluster 'Pomegranate' vase**, impressed marks and painted initials in blue. Height 130. \$260

261

**A small fine quality Royal Worcester bottle vase**, painted with a peacock by Jas Stinton. Date marks c.1911. Height 160. \$150

262

**An early 29thC Royal Worcester hand painted plate**, the centre with peaches and grapes, the elaborate border with cobalt blue ground, painted roses and gilt enrichments. Date marks for 1912. Diameter 230. \$140

263

**A Royal Worcester cabinet plate**, the centre hand painted with the River Ure with a castle in the background (North Yorkshire), signed R. Rushton, the cobalt blue border with lavish gilt decoration, 1945. See page 16. \$140

264

**A fine quality Edwardian Royal Worcester circular vase**, on tall stem with circular domed foot, painted with flowers and gilded on a peach bloom ground, date marks 1901. Height 210. \$200

265

**A Worcester porcelain plaque 'The Stag at Bay'**, after Sir Edwin Landseer R.A., by R.F. Perling. Diameter 195. In black felt mount and gold frame. Overall 370 x 440. \$500

266

**A Worcester vase decorated by Edward Raby**, baluster shape with two handles, pierced neck in the Persian manner, painted with poppies and insects on an ivory ground. Previously lamped, monogrammed twice. Height 325. \$700

267

**A Royal Worcester potpourri**, painted

by A. Lane with roses and rose buds on a leafy mossy ground, the base, rim and inner lid embellished with gilt decoration, signed, date mark for 1912, shape 2048. Height 175. Outer lid absent. \$500

268

**A Royal Worcester two handled vase**, decorated with a farming scene, the side handles, base and rim with later re-gilding, 1969. Height 345. \$500

269

**A Royal Worcester ewer vase**, the body decorated in a trailing fruit vine, embellished with gold on a blush ground, the base, side handle and neck with blue and gilt decoration, the mouth and spout with later re-gilding, shape 1309. Height 280. \$600

270

**An Edwardian Royal Doulton porcelain hand painted urn vase**, the cartouche hand painted with a portrait of a young woman, signed 'H. Bouth...', elaborately gilded. Height 135. See page 16. \$180

271

**A Doulton Burslem porcelain vase**, small spherical form, painted with sheep in a mountainous moonlit landscape signed W. Hodgkinson, printed mark to base. Height 90. \$140

272

**Two Royal Doulton fish plates**, hand painted by S. Wilson, depicting Pilchards and Sturgeon, with Tiffany retailer's markings to back. Diameter 220. \$200

273

**A Royal Doulton hand painted plate**, the centre painted with two brook trouts in weeds, signed J. Birbeck Sen., the white border with lavish gilt embellishment. \$120

274

**A pair of Royal Dux figures of a young huntsman and his fisherwoman companion**, traditionally dressed, a pheasant and rabbit draped over his shoulder, she holds a basket of fish under her left arm. Minor fritting to his hat. Pink triangle mark. Heights 395 ea. \$500

275

**A German Royal Rudolstadt porcelain ewer**, with rustic handle and floral painted decoration. Height 270. \$180

276

**A massive West German Karlsruhe vase**, squat circular shape with mushroom shaped mouth, green and white striped glaze. Height 540. See page 16. \$200

277

**An 18thC Chinese export ware blue and white teapot**, bullet shape, decorated with pavilions and river scene, minute frit to spout. \$150

278

**A pair old tin glazed lidded urns**, scalloped form and decorated with florals on a white ground, damage commensurate with age, French marks to base. Height 360. \$150

## ORIENTAL

279

**A solid Chinese ivory figure of the seated Hotei**, height on wood stand 130. \$250

280

**An old ivory page turner**, section of elephant tusk with natural tip forming the handle. Length 400. \$300

281

**A Chinese ivory large hippopotamus tusk bridge**, ornately carved and pierced with village scenes. Length on fitted wood stand 300. See page 16. \$250

282

**An old Chinese carved ivory figure of a fisherman**, the one piece carving with a bearded gent in traditional robe holding a long pole with seven fish suspended, a child to his side. Height 250, raised on carved hardwood stand. See page 16. \$380

283

**A Chinese silver cigar case**, with ornate dragon decoration in relief and character marks. 117gms. Length 130. \$200

284

**A Chinese silver hand mirror**, the mirror back decorated with mythical creatures in relief, Greek key pattern to the edge and a polished jade and agate cabochon to the centre, the handle of carved hard stone and silver, mounted in a box frame. \$150

285

**A Chinese coin silver opium pipe**, the bowl and stem with ornate decoration, a polished oval cabochon stone, possibly jade, set to the centre of stem, mounted in a box frame. \$120

286

**A Chinese filigree silver and enamel exotic bird**, on a circular wood stand. Length 190. \$100

287

**A mah jong set**, bone and bamboo tiles, in brass mounted teak box, together with four boards. \$200

288

**A pair of Chinese spinach green jade bowls**, on short feet. Diameters 125. \$500

289

**A carved Chinese jade pendant carving**, oval, carved in relief with an elephant and mouse. Length 47. \$100

290

**A carved Chinese jade pendant**, oblong shaped, carved to either side with gourds and fruits. Length 50. \$100

291

**A carved Chinese jade handling piece**, brown coloured jade, carved as a three-legged toad. Length 60. \$100

292

**A carved Chinese jade handling piece**, carved in relief with a shrimp and sea sponge. Length 55. \$100

293

**A carved Chinese jade cup**, the bell shaped bowl with whorl beading in

relief and with two asymmetrically carved dragons forming handles to the sides, raised on tapering stem with spreading foot carved with square fret pattern. Height 175. \$200

**294**

**A large calligrapher's brush**, with simulated jade bead handle and bone ferrule and finial. Length 390. \$150

**295**

**A Chinese carved lapis lazuli Buddha**, he stands beneath an arch of cash coins. Height 90. \$150

**296**

**A carved rosewood figure depicting a boy riding a bullock**. Length 20. \$150

**297**

**An old bronze foo dog seal**, the finely engraved and cast foo dog upon a square chop base with character marks. Height 42. \$100

**298**

**An uncommon Chinese Cultural Revolution hardwood carving**, the woman in traditional dress with a large kettle to her right hand. Height 260. \$300

**299**

**A small Chinese teak tray**, oblong shape inlaid with mother-of-pearl. 320 x 220. \$100

**300**

**A Chinese lacquer tray**, rectangular shape with canted corners, decorated in raised gilt lacquer and pen work on a black ground with figures in a walled garden. 380 x 250. \$200

**301**

**A carved wood or horn recumbent lion**, grasping a mystic pearl before its fore paws. Length 190. \$250

**302**

**A gilded metal bodhisattva**, seated upon a lotus throne raised upon a double plinth, his feet rest upon a circular lotus footstool. Height 245. See page 16. \$250

**303**

**A Chinese white metal teapot**, squat circular shape with cherry blossom twig handle, circular seal mark under the base. Height 130. \$250

**304**

**A Chinese gold thread embroidered panel**, from a Mandarin's robe, depicting an Imperial dragon and mystic pearl above a landscape and wave pattern, brocade bordered, framed and glazed. Overall 1060 x 740. \$350

**305**

**A vintage Yixing ware teapot**, the mild wave form top with recessed lid, good dark brown tone, a single large impressed stamp to the base with multiple characters. Diameter approx. 95. \$150

**306**

**A Chinese porcelain jar**, decorated in polychrome enamels with blossom, chrysanthemum and water lilies on a crackle ground, four-character Chenghua period mark under the base. Height 200. \$140

**307**

**Two old Chinese carved small panels**, dark lacquered and gilded highlights. 355 x 100. \$90

**308**

**An old impressive Chinese double gourd form vase**, incised and glazed decoration of chrysanthemum flowers, clouds and scrolling tendrils in yellow on a red ground. Ming six-character mark in double circle to base and old paper label for Paris auctioneers 'MICHEL DUCHANGE-GARMIGNY'. Height 287. \$3,200

**309**

**Two small old blue and white porcelain foo dogs**, each with a double netsuke type hole to the base. Length 50. \$200

**310**

**A large Chinese porcelain ovoid vase**, polychrome enamelled with red bats amongst variously coloured clouds, finely worked, gilt highlights, minor chipping to the top rim, six character Guangxu mark in red enamel over the glaze to the base. Height 333. See page 16. \$850

**311**

**A Chinese porcelain vase**, decorated in wucan enamels with lotus flowers and tendrils, stiff leaves decorate the neck between bands of square fret pattern, a wave pattern encircles the foot. Yongzheng six character mark under the base. Height 210. See page 16. \$650

**312**

**A Chinese porcelain bowl in the Ming manner**, decorated with a ho-ho bird to the centre, framed by eight lappet panels and a diaper border in blue and red, similar pattern to the exterior. Diameter 205. See page 16. \$400

**313**

**A Chinese blue and white bowl**, decorated in under glaze blue with fish and water plants to the interior and exterior, six character Kangxi mark under the base. Diameter 180. See page 16. \$250

**314**

**A small Chinese porcelain wine cup**, decorated in underglaze blue and iron red with a landscape to the well, diaper pattern border encircles the rim, the exterior decorated with panels of plants and butterflies. Artemisia leaf mark under the base. Diameter 90. \$150

**315**

**A small Chinese porcelain pot**, decorated in the Ming manner in under glaze blue with fish and water weeds, squat circular shape. Diameter 75. \$150

**316**

**A Chinese porcelain caged bird water jar**, decorated in iron red with flowering tendrils, octagonal section. Diameter 60. \$150

**317**

**Two Chinese 'Kitchen Ming' dishes**. One faulted. Diameter 290. \$100

**318**

**A Chinese porcelain two-handled vase**, baluster shape, decorated with figures and flowers. One handle repair. Height 190. \$300

**319**

**A small Chinese celadon glazed leaf shaped dish**, impressed seal mark to the reverse. Length 95. \$150

**320**

**A Chinese porcelain vase**, rectangular box form with small circular neck, dragons in relief form lug handles to the shoulder, the walls decorated in low relief with sinuous dragons, glazed in under glaze cobalt. Height 155. See page 16. \$500

**321**

**An egg yolk yellow Peking glass bowl**, with original old carved rosewood stand, comes with 1957 purchase receipt. Diameter 250. See page 16. \$250

**322**

**A large Eastern bronze Buddha figure**, palms pressed together in serene pose, floral detail in relief to the robe, supported on a lotus throne. Height 1200. \$400

**323**

**A rare 19thC Middle Eastern Bidriware (zinc inlaid with silver) two-handled stem dish**, decorated with floral designs and inlaid with Arabic scripts for 1883. Height 165. \$500

**324**

**A fine quality Japanese Satsuma circular bowl on short foot**, decorated with figures and richly gilded. Seal mark on base. With wood stand. Diameter 150. \$120

**325**

**A pair of fine quality Japanese Satsuma baluster vases**, with figural handles and figure decoration, richly gilded. Seal marks on base, with wood stands. Height 170. \$350

**326**

**An old Japanese Imari charger**, traditional decoration. Diameter 308. \$110

**327**

**A large Japanese silver bowl**, Meiji period, double walled, decorated in high relief with chrysanthemum, bamboo and irises, squat circular shape raised on a plain foot ring, double character mark under the base. 1100gms. Some faults. Diameter 255. \$900

**328**

**A good Japanese Meiji period large silver vase**, relief and engraved decoration of a bird within a rocky landscape including florals, highlighted with variously coloured gold, signed to the reverse with three character marks, further marks to the base. 1003gms. Height 240. See page 16. \$1,000

**331**

**A large heavy variegated green stone mountainous boulder**, on fitted wooden stand. Length 500. \$200

**332**

**A large heavy variegated green and ochre hardstone mountainous boulder**





200



201



204



205



207



211



213



218



240



223



224



227



228



230



237



243



233



236



244



246



258



247



250



251



253



256



259

der, on fitted wooden stand. Length 900. \$700

**333**

**A Japanese slab trunk section carved with Kwannon**, cloud scroll repeating ground, dark stained finish, supported in an old fitted log section. The panel 700 x 700 x 50. \$150

**334**

**A large old Japanese bronze two-handled fire pot**, ornate raised decoration, four truncated feet and a circular wood plinth base. Diameter 540. \$200

**335**

**An old cloisonné vase**, the four shield form panels decorated with alternating phoenix and dragons, butterflies and floral motifs to the shoulder. Height 210. \$180

**336**

**An impressive large Meiji period Japanese brass temple censer**, shibuichi worked inlaid silver and copper, foliate handles to the sides, the front decorated with two samurai warriors, one prostrating before the other, an eagle to the reverse, the lid surmounted with a mythical creature, aquatic creatures to the pierced base. Height 590. See page 16. \$850

**337**

**An old Japanese five-section black lacquered and gilded inro**, the red lacquered and gilt speckled interior with old hand-written label to the lid. Length 85. See page 16. \$240

**338**

**A triptych ukioy-e by Chikanobu**, depicting geisha and attendants, each panel 355 x 230, c.1890. \$500

**339**

**Helen Hyde (U.S.A. 1868-1919) 'The White Peacock'**, woodcut in colours, signed, monogrammed and dated 1914. 210 x 250. \$200

**340**

**Helen Hyde (U.S.A. 1868-1919) 'My Neighbours'**, wood cut in colours, signed, monogrammed and dated 1913. 175 x 180. \$200

TUESDAY 12<sup>TH</sup> DECEMBER 2017

2<sup>ND</sup> SESSION at 5.00pm

JEWELLERY

**350**

**An early 20thC Art Nouveau silver and enamel pendant**, green and blue enamelled highlights. Hallmarked Birmingham 1913. \$110

**351**

**An Edwardian 9ct. rose gold and garnet pendant**, open oval form highlighted with two almandine toned garnets. \$100

**352**

**An Edwardian 9ct. yellow gold peridot and garnet pendant**, on a 9ct. yellow gold chain, open worked, highlighted with coloured stones. \$120

**353**

**An Edwardian Art Nouveau 9ct. rose gold and blue topaz pendant**, on a 9ct. yellow gold chain, open worked. \$120

**354**

**An Edwardian 9ct. yellow gold and almandine garnet pendant**, open oval form, the four garnets as flower heads highlighted with leaf design. \$90

**355**

**A Victorian pietra dura pendant and silver chain**, the oval pendant with pink, white and blue flowers, with three 'tassels' of jet beads suspended from the base, attached to small but strong link chain set with eight conforming jet beads. \$250

**356**

**An Italian 18ct. yellow gold framed hand painted portrait miniature locket**, the frame with blue enamel detail. 26 x 22. Total weight 7.3gms. See page 16. \$400

**357**

**An Edwardian 9ct. rose gold and natural aquamarine pendant/brooch**, open shield form, hallmarked. \$140

**358**

**A 14ct. yellow gold, ruby and diamond necklet on a 9ct. yellow gold chain**, the 14ct. yellow gold centrepiece with hinged arms in a spray style incorporating 18 rubies and 28 round brilliant cut diamonds. Valuation available. \$1,000

**359**

**A heavy silver chain necklace**, two-tone Byzantine woven links with push clasp, 61gms. \$150

**360**

**A 9ct. gold opal earrings and pendant suite**, the small oval cabochon opal claw set with double bale, together with matching earrings for pierced ears, the pendant comes with a fine gold chain. \$150

**361**

**An estate 9ct. yellow gold fob chain**, rail and smaller circular links. 36.8gms. Length 580. \$660

**362**

**A lady's modern 18ct. white gold aquamarine and diamond pendant on chain**, the teardrop facet cut aquamarine in rubover mount framed by 17 modern brilliant cut diamonds, a further conforming diamond to the bale, suspended on a fine 18ct. white gold chain. \$1,800

**363**

**An 18ct. white gold pearl and diamond pendant**, a 16.4mm round South Seas pearl of a silver white hue, with good lustre and nacre with a diamond encrusted 'S' hook as a bale, suspended from a white gold ribbon collar, with lobster clasp and extender chain. TDW 0.90ct. Valuation available. See page 21. \$2,250

**364**

**A quality natural Fei Cui type A jadeite pendant**, translucent pale green colour, carved as Kuanyin, the 14ct. white gold mount with three bead set diamonds. Height of pendant 44.5mm. Complete with Hong Kong jade identification certificate 'Kowloon Jade & Jewellery Laboratory Ltd'. \$550

**365**

**A natural Fei Cui type A jadeite pendant**, Ruyi design, translucent light green colour, the 14ct. suspension mount with three small diamonds. Hong Kong certificate. \$550

**366**

**A jade bead and 14ct. yellow gold necklace**, the six bell form cylinders with fine belcher links between. \$350

**367**

**A vintage strand of 44 natural light reddish pink toned coral beads**, the chunky solid rounded cylinders with variegated colour, mildly graduated. Valuation available. Diameter 17 to 23mm. \$550

**368**

**A natural Fei Cui type A jadeite pendant**, of a round pi disc within a conforming hoop, pale green with 18ct. rose gold decorative mount. Hong Kong Kowloon jade certificate available. See page 21. \$1,500

**369**

**A natural Fei Cui type A jadeite pendant**, mildly tapered rectangular form, displaying vibrant green inclusions and pale tones, the 14ct. white gold mount with three small diamonds. Jade certificate available. See page 21. \$2,000

**370**

**A vintage amber bead necklace**, the polished oval amber beads of deep gold and egg yolk yellow, 10mm to 25mm, silver parrot clasp. \$150

**371**

**A single strand cultured pearl necklace**, the 91 semi-baroque cultured pearls of a light cream, green and rose tone, knotted between each pearl, 7.8-9.4mm, with silver and single pearl clasp, (requires re-threading). Old valuation available. \$150

**372**

**A single strand cultured pearl necklace**, the 48 uniform 8mm pearls with a deep cream lustre, a garnet set 18ct. gold pendant suspended from a 9ct. gold clasp at the base of the necklace. \$150

**373**

**A Victorian 9ct. gold muff chain**, small fine links with a 9ct. gold dog clip, 14gms. \$250

**374**

**A silver fob chain**, alternating twisted paperclip links with curb links, T-bar to the base and dog clip clasp. \$130

**375**

**A vintage ivory bead necklace**, the 65 round graduating beads 5mm to 16mm alternating with tiny ivory beads, screw clasp. \$220

**376**

**A vintage ivory bead necklace**, the 106 round graduating beads 4mm to 15mm, screw clasp. \$220

**377**

**A cultured pearl necklace with 14ct. gold and diamond enhancer**, 84 uniform size pearls with a good white lustre with a 14ct. five flat bead enhancer

set with three small diamonds and a baroque pearl suspended from the centre, 14ct. gold clasp. \$180

**378**

**A vintage coral and silver necklace**, the large rondel shaped dyed coral beads in groups of three threaded between one small silver and two small coral beads, decorative silver toggle clasp. \$150

**379**

**A 9ct. rose gold capped greenstone wide bar brooch**, the later matt finished plain greenstone slab of rectangular form, the engraved gold cap ends stamped with maker's mark 'Walsh', (Walsh & Co., Masterton). \$150

**380**

**A pair of early 20thC N.Z. silver and greenstone cufflinks by A. Kohn**, the oval silver panels with script monogram: 'P.W.', maker's marks stamped to the back. \$200

**381**

**A lady's estate 18ct. white gold and diamond solitaire ring**, the 0.56ct. Old European cut diamond of clarity: VS1 and colour: G-H, bead set and of 'good cut quality' with two small bead set diamonds framing. TDW 0.63gms. Valuation available. The shank with N.Z. colonial maker's stamp 'A. Kohn'. See page 21. \$2,400

**382**

**A 19thC colonial 15ct. yellow gold and gold bearing quartz pendant**, elongated oval form, large engraved cap mount and encircling gold band, the quartz panel with crack. Length 45. See page 16. \$260

**383**

**A pair of N.Z. colonial 20ct. yellow gold and greenstone drop earrings**, the elongated diamond form greenstone panels with capped mounts suspended from a single flowerhead. See page 16. \$260

**384**

**A N.Z. colonial 15ct. yellow gold and gold bearing quartz bar brooch**, the double bars with a central diamond form polished panel of gold bearing quartz flanked by two leaf designs. See page 21. \$400

**385**

**This and the following seven lots were purchased by our vendor in the 1980s from Fingers the contemporary jewellery gallery then situated in Lorne Street.**

**A vintage bone fish pendant**, carved by renowned NZ carver Owen Mapp, realistically carved and decorated with spirals, inscribed with artist's initials. See page 16. \$150

**386**

**A pair of vintage Koby Bosshard silver drop earrings**, artist's mark and stamped 925, with original felt pouch. \$120

**387**

**A vintage Roy Mason silver and paua necklace and earring suite**, the neck-

lace with four paua shaped panels, silver tubes, beads and two pieces of paua threaded onto a fine silver chain, together with a pair of silver 'button' stud earrings. \$150

**388**

**A vintage pair of Paul Annear silver and greenstone earrings**, the flower pounamu discs with silver wires for pierced ears. See page 21. \$120

**389**

**A vintage pair of Nick Charlton titanium earrings**, the 'V' form with 'petrol' finish to the interior, with posts and butterflies for pierced ears. \$100

**390**

**A vintage pair of Nick Charlton titanium earrings**, double leaf form with 'petrol' finish to the back leaf, hooks for pierced ears. \$100

**391**

**A vintage pair of Brian Adam silver disc earrings**, a plan silver disc and a bone disc decorated in a black and white checkerboard pattern suspended from a silver ring, wire hook for pierced ears, signed Adam, NZ. \$120

**392**

**A vintage pair of Brian Adam silver and paua disc earrings**, the silver disc set with paua and red enamel to one side, wire hooks for pierced ears, signed Adam, Auckland. NZ. \$100

**393**

**A large and impressive 9ct. rose gold and pounamu gent's ring**, the gold mount in a 'seaweed' design and holding a large irregular facet cut polished pounamu piece, the ring designed and made by Peter Minturn with the pounamu cut by Norman Noakes, shank stamped 9ct. and PM, 75gms total. See page 21. \$1,100

**394**

**An Auckland Football Association referee badge**, black enamel on brass, named and dated '49. \$40

**395**

**An Auckland Football Association 'Life Member' Referee Assn.**, badge, silver and blue enamel, named and dated 1932. \$90

**396**

**A Hikurangi Football Club silver medallion**, Maltese Cross shape, named, c.1930s. \$90

**397**

**A silver Takapuna Amateur Cycling Club medallion**, Maltese Cross form, c.1930s. \$90

**398**

**A silver Auckland Amateur Athletic & Cycle Club medallion**, named and dated 1940. \$90

**399**

**A 9ct. gold School Attendance medallion**, monogrammed and engraved. 415gms. \$120

**400**

**A 9ct. gold Wellington Boys College boxing medallion**, named and dated 1912. G.T. White maker. 9.1gms. \$170

**401**

**A silver Thames Pigeon Club medallion**, named and dated 1898. \$200

**402**

**An unmarked 9ct. gold Carlton Bowling Club medallion**, named and dated 1908. 10.5gms. \$250

**403**

**A 9ct. gold Cricketing medallion**, Maltese Cross form with batsmen to the centre. Named and dated 1922. 10.2gms. \$220

**404**

**A 9ct. gold Raikaia Miniature Rifle Club medallion**, named and dated 1925. 5.5gms. \$120

**405**

**A 9ct. gold Dunedin Amateur Athletic Club medallion**, named and dated 1905. 6.4gms. \$125

**406**

**A 9ct gold sweetheart locket brooch**, worked with the 33rd New Zealand Reinforcements insignia, opening to reveal two photographs. Total 15.2gms. \$250

**407**

**A 9ct gold fob medallion**, engraved for the Invercargill Rowing Club, presentation inscribed, 1902. 6.2gms \$100

**408**

**An estate 9ct. yellow gold and greenstone pendant**, the oval cabochon gem quality greenstone panel in a wide plain frame mount, rolled gold chain attached. \$120

**409**

**A Reuben Watts silver and enamel pendant**, in the New Zealand Arts & Crafts manner, of open sinuous tendrils encircling an oval panel worked with a Viking ship in green, ochre and blue enamels. Suspended from a double chain from a hanging bale, a small baroque pearl suspended beneath. See page 16. \$1,600

**410**

**A 14ct. yellow emerald and diamond ring**, the 2.07ct. emerald cut emerald claw set in a high stepped mount encrusted with 167 small round brilliant cut diamonds, including the upright shoulders (one diamond missing). TDW 0.83ct. Valuation available. \$2,500

**410A**

**An emerald and diamond platinum set ring**, the 1.32ct emerald cut emerald claw set and surrounded by baguette cut diamonds in a ribbon mount. TDW 0.60ct. See page 21. \$1,600

**411**

**An 18ct. white gold and jade ring**, the Fei Cui Type A oval cabachon jade claw set with a single small round brilliant cut diamond to each flared shoulder. Jade certificate available. See page 21. \$3,500

**412**

**A good 19thC lady's estate 18ct. rose gold and three diamond gypsy style ring**, the three old mine cut diamonds recessed to the heavy wide and plain tapered shank, the 0.80ct. diamond





263



270



276



281



282



302



310



311



312



313



320



321



328



336



337



356



382



383



385



409



415



417

framed by two at 0.42ct. ea. Hallmarked Chester 1890. Valuation available stating colour as J and clarity of VS1. \$4,800

**413**

**A lady's modern 18ct. white gold rubellite and diamond dress ring**, the striking cushion cut rubellite of 3.22ct. framed by 12 brilliant cut diamonds with TDW of 1.60ct., basket mount, forked shoulders. Valuation available. See page 21. \$4,200

**414**

**An impressive Art Deco platinum 18ct. white gold and diamond brooch**, the centre with a single round brilliant cut diamond of 0.48ct. framed by a combination of 10 mixed baguette and Carré diamonds totalling 0.66ct. and a combination of early round brilliant, Swiss and single cut diamonds totalling 2.40ct., TDW 3.54cts. Valuation available. See front cover. \$5,500

**415**

**A 9ct. and 14ct. white gold emerald and estate diamond pendant**, the oval cabochon natural emerald of 10.50ct. bar set to a tapered mount encrusted with four channel set baguette diamonds and 14 bead set sennille diamonds with a single claw set old mine cut diamond of 0.45ct. above, TDW 0.85ct. Valuation available. See page 16. \$5,500

**415A**

**An Art Deco inspired bespoke made emerald and diamond cluster ring**, 18ct white gold set. The oval emerald of approximately 1.5ct claw set above a table of channel set baguette diamonds, further brilliant and baguette diamonds embellish the bezel, shoulders and sides of the ring. TDW approx 1.72ct. Valuation available. See page 21. \$7,500

**416**

**A pair of 18ct rose gold and diamond earrings**, each in the form of a leopard's head encrusted with diamonds, posts for pierced ears, colour F-H, clarity SI-I1, valuation available. See page 21. \$5,000

**417**

**A pair of lady's large modern 18ct. rose gold rubellite diamond and sapphire earrings**, the sinuous double swollen drops each with two tapered rubellites framed by open worked bands of modern brilliant cut diamonds and sapphires. The four rubellites of 7.25ct., the diamonds with TDW 3.3ct. and the sapphires totalling 2.86ct. Valuation available. See page 16. \$6,400

**418**

**An impressive classical 18ct. white gold lady's modern emerald and diamond bracelet**, the nine claw set emerald cut natural emeralds totalling 13.84ct., each framed by a row of round brilliant cut diamonds and with pairs of clusters diamonds linking. TDW 6.37ct, push-in clasp with safety catch to each side. Valuation available. See front cover. \$22,000

**419**

**An lady's impressive modern 18ct. white gold emerald and diamond necklace**, the 11 graduating emerald cut emeralds including two to the drop spaced by pairs of cluster diamonds with further conforming clusters to one side of eight of the emeralds, further pairs of cluster diamonds forming the balance of the necklace. The emeralds totalling 26.57ct. with a TDW 27.1ct. Valuation available. See page 21. \$48,000

**420**

**An 18ct rose gold, diamond and sapphire bracelet**, the ornate looping and swirling frame set with diamonds and pale blue sapphires, TDW 6.34ct. Colour F - H, clarity SI-I1. TSW 2.86ct, 41.1gms total weight. Valuation available. See page 21. \$7,600

**421**

**An estate 18ct white gold and diamond solitaire ring**, the 1.2ct Old European cut diamond claw set in a decoratively pierced mount, Colour J-K, clarity VS. Valuation available. See page 21. \$2,000

**422**

**A lady's modern emerald and diamond cluster ring**, 18ct. yellow gold and platinum, the central oval shaped mixed cut emerald of 'very good' overall grade and 'light natural inclusions' of 1.40ct. framed by 12 round modern brilliant cut diamonds of TDW 0.55, basket base to the mount. Valuation available. See page 21. \$2,500

**423**

**A vintage 18ct. yellow gold and opal dress ring**, the large oval cabochon opal with good dark blue/purple tone, claw set in a coronet mount. See page 21. \$220

**424**

**A late Victorian 18ct. yellow gold, sapphire and diamond bridge ring**, the four circular facet cut sapphires of light blue tone spaced by two old cut diamonds and one later synthetic. Hallmarked Birmingham 1899. \$300

**425**

**An 18ct. white gold Chinese jade and diamond lady's dress ring**, the oval cabochon jade panel of good vibrant green tone framed by six round brilliant cut diamonds. See page 21. \$220

**426**

**An 18ct. gold and diamond solitaire ring**, the 0.44ct. round brilliant cut diamond claw set in half round shank with forked shoulders, Colour I-K, clarity VS2. Valuation available. See page 21. \$950

**427**

**A 14ct. rose gold ring**, the fine flower mount set with a seed pearls, rubies and a sapphire. \$150

**428**

**An estate 18ct. gold diamond and ruby ring**, the central facet cut ruby with a 0.20ct. old cut diamond to each side. \$350

**429**

**A large and impressive 9ct. gold dia-**

**mond and opal gent's ring**, the mount in the form of plain columns holding a large polished opal doublet of considerable fire, surrounded by sixteen small round brilliant cut diamonds. 37.8gms total. \$650

**430**

**A dramatic 14ct. gold smoky quartz ring**, the large emerald cut smoky quartz claw set in an open mount, one claw requires repair. See page 21. \$400

**431**

**A unique vintage silver and turquoise matrix dress ring**, the polished turquoise with good veining set into a large silver mount in the form of tree branches with small balls to each branch. \$300

**432**

**An 18ct. gold and carnelian gent's ring**, the large polished carnelian cabochon in a rub over mount, the substantial gold setting in a rough 'bark' type finish. 23gms total. See page 21. \$650

**433**

**A vintage silver designer ring**, the mount in the form of a tree knot holding a silver ball to the centre, plain shank. \$150

**434**

**A vintage Mexican silver 'poison' ring**, the ornate silver mount in the form of large leaves set with two small cabochon tiger's eye stones with the large central oval tiger's eye opening to reveal an empty cavity. \$150

**435**

**An 18ct. white gold and black pearl ring**, the 11.5mm Tahitian type black pearl surrounded by diamond imitants of baguette and marquise shape. Valuation available. \$500

**436**

**A lady's vintage three-star sapphire and 14ct. yellow gold dress ring**, the oval cabochon sapphires of 2.75ct., total claw set within a rectangular mount, decorated shoulders. Valuation available. \$450

**437**

**A lady's vintage 18ct. white gold and five stone diamond ring**, the old brilliant cuts of good size, claw set, some attention required. See page 21. \$700

**438**

**A 1940s 14ct. white gold, emerald and diamond dress ring**, the square cut emerald corner claw set above two pairs of small round brilliant cut diamonds, scroll wire detail to the mount. \$380

**439**

**An estate 18ct. yellow gold and agate dress ring**, the oval cabochon agate in a substantial rub-over mount with textured triangular panel to each shoulder. \$220

**440**

**A vintage 9ct. rose gold and carved jade panelled ring**, the rectangular green jade panel with carved and pierced design. See page 21. \$140

**441**

**An 18ct. yellow gold and multi-dia-**

**mond ring**, the 12 modern brilliant cut diamonds set as six pairs in one row, plain wide band. See page 21. \$450  
**442**

**A vintage 14ct. white gold jade and diamond lady's dress ring**, the circular cabochon green jade panel claw set above two pairs of flanking modern brilliant cut diamonds. See page 21. \$350  
**443**

**A 9ct. yellow gold wide basket weave solitaire diamond ring**, the round brilliant cut diamond in rub-over setting upon the woven gold wire frame. 6.6gms. See page 21. \$300  
**444**

**A pair of 18ct. white gold sapphire and diamond rings**, the oval facet cut sapphire of good blue tone framed by 10 round modern brilliant cut diamonds, the companion ring with five round brilliant cut diamonds set in a curve to accept the other ring. See page 21. \$850  
**445**

**A 1930/40s platinum, estate solitaire diamond ring**, the round old brilliant cut diamond held by eight claws, pierced scrolling mount and shank. See page 21. \$350  
**446**

**An estate 14ct. yellow gold and diamond ring**, the central modern brilliant cut diamond of approx. 0.50ct. held by four claws and in a square type setting flanked by three diamonds to each side within a recessed rounded rectangular setting, substantial plain mount and shank. 9gms. See page 21. \$800  
**447**

**An estate 18ct. gold and five stone diamond ring**, the five old cut diamonds claw set, TDW 0.89ct. Colour F-G, clarity SI2. Valuation available. See page 21. \$850  
**448**

**A 1981 gold proof full sovereign**, in original case. \$380  
**449**

**An Art Deco 9ct. yellow gold plain cigarette case**, rectangular form, hall-marked London 1921. 38.7gms. \$650  
**450**

**An Art Deco Cartier silver and 14ct/ bi-colour gold card case**, rectangular form, linial machine engraved and highlighted with bands of yellow and rose gold, stamped maker's marks to the interior clip, scratch engraved date to the interior 'April 10th 1928'. 45.5gms. 76 x 48. \$400  
**451**

**A 1981 \$50 gold coin of the Bahamas**, 2.68gms of .500 fine gold, in original packaging. \$80  
**452**

**A 1908 half sovereign**, Sydney mint. \$200  
**453**

**An Edwardian 15ct. yellow gold and opal Art Nouveau brooch**, circle form with leaf and floral open design high-

lighted with three oval cabochon opals. \$150  
**454**

**A Scottish silver and jewel set brooch**, square star form, the central large amber toned jewel framed by coloured stone and shell panels. \$100  
**455**

**A Victorian 15ct. yellow gold enamel and pearl Etruscan brooch**, oval form with fine bead wirework, the central raised section with blue enamel starburst supporting a single pearl to the centre, glazed hair locket to the reverse. See page 21. \$260  
**456**

**A 19thC pique gold and tortoiseshell brooch**, four panelled circular form with floral and Maltese cross inlay. Diameter 32. \$110  
**457**

**A 19thC 15ct. yellow gold ruby and seed pearl crown form brooch**, the curved bar with four rubies highlighted with three scrolling bands of seed pearls, five further larger pearls to the crown top. Tested as 15ct., unmarked. \$180  
**458**

**An Edwardian 9ct. gold enamel and pearl photo brooch**, the circular frame set with seed pearls with a pearl encrusted star in the centre of a canary yellow guilloché enamel panel, the reverse with space for a photo under glass. \$220  
**458A**

**A vintage diamond brooch in the form of the Chinese surname Xi**, or forming the Roman numeral XI or IX, unmarked yellow and white gold pave set with 19 diamonds. See page 21. \$400  
**459**

**A Victorian 9ct. gold and citrine brooch**, the cushion cut gold citrine in an engraved scalloped mount. \$150  
**460**

**A Victorian 9ct. gold and cameo brooch**, the well carved cameo in the form of a classical woman with flowers and leaves woven into her hair, in a rub over mount with rope edge decoration. \$150  
**461**

**A retro German 8ct. yellow gold and pearl brooch**, octagonal type form with radiating textured and polished bars, four pearls to the centre. 5.8gms. \$140  
**462**

**An early 20thC 'Mizpah' silver and gold brooch**, engraved panel to the centre. \$80  
**463**

**A Scottish silver sword brooch**, the top set with an oval facet cut smoky quartz, stamped 'Silver' to the reverse. Length 80. \$100  
**464**

**A vintage Bohemian garnet brooch**, the star form pave set with facet cut deep red Bohemian garnets. \$80  
**465**

**A c.1900 9ct. yellow gold and Scottish coloured agate bracelet**, the five

various octagonal agate cylinders with gold cap mounts and oval chain links between. See page 21. \$300  
**466**

**A Chinese green jade green sapphire and 14ct. yellow gold bracelet**, the five curved cylindrical bars with cap mounts spaced by four oval facet cut green sapphires in rub-over mounts. \$350  
**467**

**A natural jadeite bangle**, half hoop form, the white/pale green tone with very light lavender highlight inclusions. 64.74gms. With Certificate of Authenticity. \$500  
**468**

**A vintage Chinese silver and large cabochon gemstone set bracelet**, the six various stones including jade, fluorite, rose quartz and amethyst, irregular polished cabochons claw set to an X-form frame with floral highlight. See page 21. \$160  
**469**

**A 1920s German silver and amber bracelet**, five silver panels set with round polished amber connected by five wide links, marked 'Handarbeit, 835, OKO, DRGM' (Deutsches Reichsgebrauchsmuster), together with a silver and amber set ring. \$150  
**470**

**A vintage polished amber bracelet**, the rectangular cut and polished amber pieces with external fissures on double elastic thread. \$120  
**471**

**An antique 9ct gold charm bracelet**, the small wide flattened links set with eleven charms (three not gold), of particular note; a pistol propelling pencil, lawn roller and rooster, 25gms. \$400  
**472**

**A substantial carved ivory bangle**, plain half-hoop form. 101gms. \$200  
**473**

**A spiral carved ivory bangle with gold wire highlight**, the gold wire recessed and spiralling to the narrow ridge. \$200  
**474**

**An ornate silver cuff**, decorated with Celtic swirls and spirals, stamped Suarti 925 to the interior. 40gms. \$100  
**475**

**A silver Egyptian cuff bracelet**, decorated with papyrus and scarab beetle, inlaid with lapis lazuli, coral, turquoise and malachite. 75gms. \$120  
**476**

**A stylish Italian silver cuff bangle**, in the form of three waves, stamped Italy and 925. \$100  
**477**

**A silver Navajo cuff bangle**, decorated with geometric forms, the centre set with a heavily veined polished turquoise, maker's initials and SILVER stamped to the reverse. \$150  
**478**

**A Navajo silver and turquoise ring**, the oval polished turquoise set in a traditional feather and flower mount, stamped 925 to shank. \$100



479

**A silver brooch in the form of a jaguar.** Length 60. \$100

480

**A heavy silver hinged bracelet,** with the two ends running parallel to each other, stamped to the interior. 72gms. \$120

481

**A silver gate bracelet,** unusual marquise shape links, padlock clasp. \$100

482

**An antique gold plated bangle,** the silver hinged slave bangle gold plated in 9ct. rose gold. \$150

483

**A vintage ivory bangle,** plain domed form. \$180

484

**A vintage ivory bangle,** with wrythen twist carving, terminating in a pair of dragon heads. \$180

485

**A stylish silver hinged bangle,** the top in the form of a sleek leaping jaguar. \$100

486

**A pair of antique 15ct. yellow gold earrings,** the drops as a single layered flowerhead. 2.24gms. \$90

487

**A pair of vintage 15ct. gold cuff links,** the oval panel decorated with an elephant in relief with an elephant hair set to the edge, joined by a small chain to gold flower bud, 8.4gms. \$340

## — CLOCKS & WATCHES —

488

**Two attractive Art Nouveau pocket watch keys,** one heart shaped with an embossed lady's face to both sides and the other of long tapered form. Old steel winding square (sizes approx. 7-8). Together with a third modern key. \$150

489

**Two antique pocket watches,** one brass, the decorative dial with Roman numerals and seconds dial, together with a silver 800 standard pocket watch, the white enamel dial with Roman numerals, gold and painted decoration. Both in working order. \$200

490

**A silver keyless wind pocket watch,** white enamel dial marked 'J.W. Benson', Roman numerals, railtrack minutes, subs seconds dial at VI. Hallmarked London 1928. In original case. \$300

491

**An 18ct. gent's yellow gold fob watch,** mid-size, working, requires attention. 43gms. \$400

492

**A silver pendant watch,** the watch as an oval pod with three leaf form covers similar to a c.1600s design, one opening to reveal the gilded face, hallmarked London 1982, suspended on a silver uniform link long chain. \$120

493

**An early 20thC lady's 14ct. yellow gold open face pocket watch,** scroll engraved detail, gilded face, stem wind, working. Diameter 44. \$220

494

**A 1930/40s Helvetia 9ct. rose gold gent's wristwatch,** rounded rectangular form, Arabic numerals with subsidiary seconds dial, working, later black leather strap. The 15 jewel movement in working order. \$300

495

**A 18ct. white gold and diamond Girard Perregaux lady's watch,** 1960's vintage, square white face with silver hands and markers surrounded by 21 round brilliant cut diamonds, the 18ct. gold strap of knitted mesh. Valuation available. 30.36gms. \$2,000

496

**A 19thC French brass cased carriage clock,** fixed overhead handle, the gilt cut-away dial with Arabic numerals, gong striking movement, not working. 100 x 95 x 190. See page 21. \$300

497

**A small French brass cased carriage clock,** the white enamelled dial with Roman numerals marked 'B. Petersen & Co., Christchurch, N.Z.' Working order, with key. Height 90. \$200

498

**An Edwardian spelter mystery clock,** in the form of a Greek maiden, her hand holding the clock (requires minor attention for the clock to hang). Height 300. \$200

499

**A Victorian black slate cased mantel clock,** white enamel dial with Roman numerals. Width 240. \$150

500

**A Victorian black marble cased mantel clock,** the case surmounted by a pair of spelter bronze figures of children, the white enamel dial with Roman numerals, bell striking mechanism. Width 400. \$400

## — PERFUME BOTTLES —

501

**A Victorian silver scent bottle,** tapering fluted form, leaf scroll embossed shoulder and spherical screw top. London 1891. \$180

502

**A Victorian silver tall green glass double ended scent bottle,** with embossed decoration and hinged lid. Birmingham 1887 by Charles May & Sons. Length 110. \$300

503

**A small late Victorian silver ruby glass tear drop scent bottle.** London 1893 by Sampson Mordan & Co. Length 45. See page 21. \$200

505

**A Victorian silver gilt double ended ruby tear drop scent bottle,** faceted glass and ornate embossed silver hinged lids. London c. 1860. Length 80. See page 21. \$300

505A

**A Victorian silver ruby glass perfume bottle,** with vertical ruby and gilt panels. London 1885 by Sampson Mordan & Co. Length 80. See page 21. \$300

506

**A Victorian silver top blue glass scent bottle,** with horizontal ridges and embossed lid. Birmingham 1893 by G E Walton & Co Ltd. Length 80. \$200

507

**An antique French silver and blue glass perfume bottle,** cut glass and embossed hinged top. Length 90. \$250

508

**A silver sleeved ruby glass scent bottle,** with ornate embossed and pierced decoration and hinged lid. Birmingham 1909 by G.E. Walton & Co Ltd. Length 70. \$280

509

**An Edwardian silver topped glass perfume bottle,** with faceted glass and embossed lid. Birmingham 1905 by Charles May & Sons. Length 90. \$180

510

**A rare silver top and speckled glass scent bottle,** black and silver with embossed hinged lid. Birmingham 1898 by Charles May & Sons. Length 85. See page 21. \$300

511

**A late Victorian silver top basket weave scent bottle.** London 1897 by 'CJP'. Length 80. \$250

512

**A Victorian silver and ruby glass binocular smelling salts/scent bottle,** in original fitted morocco case. London 1870 by Samson Mordan & Co. Length 120. See page 21. \$400

## — SILVER —

513

**Two small silver pin trays,** both decorated with angels, together a pair of manicure scissors the silver handles with angels, Sheffield 1898, Birmingham 1902 and Birmingham 1906. \$180

514

**An Edwardian fancy crystal oblong dressing table jar,** with embossed silver top. Birmingham 1906. Length 100. \$100

515

**An unusual late 19thC Indian silver dressing table hand mirror,** embossed with village scenes. Length 260. \$130

516

**A three-piece silver dressing table set,** two brushes and a hand mirror with guilloché enamelled floral decoration, by Henry Clifford Davis. In box. \$200

517

**Two silver photo frames,** one oblong, Chester 1909, height 180; the other oval, Birmingham 1915, height 230. Some faults. \$150

518

**A silver lidded trinket box,** the oval box of four feet, the lid set with a Royal Worcester panel of a pheasant signed

Jas. Stinton (crack to panel), Birmingham 1938 120 x 30. \$500

**519**

**A collection of five silver thimbles and two plated thimbles**, various hallmarks, one with an orange glass top. \$100

**520**

**An uncommon late 18thC Scandinavian silver Hovedvandsaeg (vinaigrette) of pedestal urn form**, hinged pierced domed cover, restrained engraved decoration, the square base with hinged lid opening to reveal a gilded interior, stamped with maker's initials 'CIB'. 45gms. Height 70.

It is recorded that these love token boxes, called 'Hovedvandsaeg' by the Danish and 'Luktevannshus' by the Swedish were often given by a suitor to his beloved as a betrothal or engagement gift, further details available. See page 24. \$400

**521**

**An Edwardian silver vesta box**, profusely engraved with suspension ring. Chester 1903. \$100

**522**

**A Victorian silver vinaigrette**, machine engraved, the interior with scroll pierced grill and gilded. Birmingham 1846 by Edward Smith, a noted vinaigrette maker. \$220

**523**

**A Georgian Scottish horn snuff mull with silver mounts**, inscribed 'John Brown to Dr Crichton' and with later inscription 'From Mrs Dr Crichton to Mr John Baird'. See page 24. \$200

**524**

**An Art Deco silver cigarette box**, with sandalwood interior and engine turned decoration. Birmingham 1920. 420gms. Length 160. \$200

**525**

**A .800 standard silver trinket box**, oblong with ornate embossed decoration. Length 85. \$130

**526**

**A small silver and enamel travelling set**, consisting of a thimble together with thread-holder, lipstick case, scent wand and a tube containing four small manicure implements, the exterior in a pale lemon enamel decorated with roses. \$400

**527**

**Three silver and mother-of-pearl folding fruit knives**, mother-of-pearl handles with silver blades, Sheffield 1902 and 1922. \$120

**528**

**Three silver and mother-of-pearl folding fruit knives**, mother-of-pearl handles with silver blades, Sheffield 1860, 1861 and 1891. \$140

**529**

**Three silver and mother-of-pearl folding fruit knives**, mother-of-pearl handles with silver blades, Sheffield 1894, 1898 and Birmingham 1862. \$120

**530**

**Three silver and mother-of-pearl folding fruit knives**, two in their original

boxes, Birmingham 1858, Sheffield 1824 and 1908. \$140

**531**

**Two silver folding fruit knives**, engraved handles, Sheffield 1902 and Birmingham 1893. See page 24. \$120

**532**

**An Irish silver pie spoon**, Celtic point pattern, crested with a sphynx passant above a monogram. Dublin 1796 by James Keating. 103gms. Length 310. \$200

**533**

**A pair of George IV Scottish silver pie spoons**, fiddle pattern, Glasgow 1828 by David McDonald. Weight 115gms. \$250

**534**

**A Victorian silver pie spoon**, fiddle pattern, Exeter 1849 by John Stone. 110gms. Length 320. \$160

**535**

**A William IV Irish fiddle pattern silver tablespoon**. Dublin 1833 by James Brady. \$80

**536**

**Two boxed double struck King's pattern silver spoons** with shell heels. London 1822 and 1830. \$120

**537**

**A set of six Victorian Scottish single-struck King's pattern silver teaspoons**. Glasgow 1870 by Andrew Alison. \$100

**538**

**A pair of heavy William IV fiddle pattern silver sauce ladles**. London 1835 by William Eaton. 124gms. \$120

**539**

**A pair of Georgian fiddle and thread silver sauce ladles**. London 1799 by William Eley and William Fearn. 105gms. \$130

**540**

**An Edwardian fiddle pattern silver flat border flat bottom sauce ladle**. Sheffield 1903. \$75

**541**

**A William IV fiddle pattern silver flat bottom sauce ladle**. London 1837. \$100

**542**

**A set of six 'Queen's Heads' silver teaspoons**. Sheffield 1977. \$100

**543**

**A Canadian fiddle pattern silver sauce ladle**, date letter not identified. Length 160. \$80

**544**

**An 18thC silver toddy ladle**, the oval bowl with coin in base dated 1711, long twisted baleen handle. Length 380. \$140

**545**

**An 18thC embossed silver toddy ladle**, with coin in base dated 1707 and long twisted wood handle. Length 350. \$140

**546**

**A silver anointing spoon**, engraved decoration to bowl and handle. London 1936 by Wakely & Wheeler. \$120

**547**

**A George IV silver caddy spoon with shell bowl and beaded handle**. London 1828. Length 85. \$100

**548**

**A George IV silver caddy spoon with shell bowl and a broad engraved handle**. London 1827 by Samuel Godbehere and Edward Wigan. Length 63. \$150

**549**

**A set of six Victorian silver dessert forks**, fiddle pattern. Exeter 1850 by Josiah Gregory. 265gms. \$180

**550**

**A pair of George III fiddle pattern silver fish serving tongs**, the mildly curved blades with conforming lineal piercing. London 1806 by William Eley & William Fearn. 233gms. With old New York retailer's cover. See page 24. \$380

**551**

**A set of Victorian Scottish King's pattern silver sugar tongs** with shell shaped bowls. Glasgow 1869. Length 150. \$80

**552**

**A pair of Victorian silver plated fish servers**, beautifully pierced and engraved decoration and plain ivory handles, in fitted box. \$150

**553**

**An early Victorian fiddle pattern silver sugar sifting ladle**. London 1857 by George Angel. Length 165. \$100

**554**

**A set of six Victorian fruit knives and forks**, finely engraved blades, plain mother-of-pearl handles - together with a set of six silver plated fish knives and forks. In original walnut box. \$150

**555**

**Six Russian table utensils**, all with decorated silver handles and gilded plated blades, fish knife and fork, butter knife, pair of serving spoons and a cake slice. All with hallmarks. \$180

**556**

**A 19thC lidded chalice**, the body, base and lid decorated with a frieze of neoclassical mythical beasts, four panels to the centre with initials engraved, ornate crown-style finial to lid, with Russian import marks predating 1898. 110 x 320. See page 24. \$500

**557**

**A Georg Jensen 1922 silver coffee pot and lidded sugar bowl**, ovoid form, mildly hammered finish, plain turned and ebonised acorn type finials and handle, various stamped marks to the base including date of 1922 'Georg Jensen', monogram for the maker Cort Hannibal and Danish silver marks, London import marks stamped to the side for 1921-1922. Heights 150 and 135. See page 24. \$1,400

**558**

**A c.1780 Swedish silver beaker by Nils Grubb**, Hudiksvall, fine floral wriggle work embossing, gilded bands highlighting the base and under the top rim, stamped marks including the maker's monogram. 65gms. Height 95. See page 24. \$350

**559**

**Two Danish silver 'Nursery Rhymes' spoons**. Diameter 110, length 145. London 1977. \$80



419



363



381



384



368



369



410A



388



411



413



415A



416



425



420



421



422



423



426



430



432



437



440



441



442



443



444



445



446



447



455



458A



465



468



393



496



503



505



505A



510



512



512



- 560**  
A good quality Edwardian period Dutch .800 standard silver oval circular bowl, with ornate pierced decoration and shaped rim. 295gms. Width 300. \$400
- 561**  
A c.1890 Tiffany & Co. of New York silver spirit kettle, Aesthetic movement engraved floral panels, cherub finial, crested with a raised arm holding a sprig, the band with relief ivy decoration and ball and claw feet, with burner. The base stamped with maker's mark and 'English Sterling 925-1000' and with London import marks for 1936. 1957gms. Height 355. See front cover. \$2,000
- 562**  
An Edwardian silver four-piece tea and coffee service, octagonal panelled shaped raised on pad feet, the pots with ebonite handles. London 1906 by Goldsmiths & Silversmiths Co. Ltd. Total weight 1595gms. \$1,000
- 563**  
A William IV circular silver teapot and matching cream jug, reeded borders, flower finial and ivory heat rings. London 1831, by Barnard Brothers. Total weight 835gms. Some small dents. \$450
- 564**  
A small decorative Victorian silver teapot, with ornate embossed decoration, ebonised wood handle and finial. Sheffield 1898. 350gms. Diameter 130. \$200
- 565**  
A late Victorian bachelor's teapot, spherical form on four feet, profusely embossed with flowers and foliage, ebonised handle and finial to lid. Sheffield 1900 by Henry Atkin. \$220
- 566**  
An Edwardian silver bowl, the ornate openwork sides decorated with flying birds, vines, leaves and flower with a plain base, London 1908 by Goldsmiths & Silversmiths Company Ltd, 342gms, diameter 240. \$450
- 567**  
A late Victorian silver mounted dimpled glass decanter, the silver mount with decorative embossed scrolling shoulder and four spout top. London 1898 by William Hutton & Sons Ltd. Height 285. See page 24. \$260
- 568**  
A late Victorian silver mounted glass claret jug, the plain silver mount, hinged lid and handle hallmarked London 1896 by Goldsmiths & Silversmiths Co., the ovoid glass body with star cut base. Height 225. See page 24. \$800
- 569**  
An 18thC Irish provincial silver sugar bowl, circular with serpentine rim (some tears), wrythen fluted and punch scroll decorated body with rondel centre, raised on three legs with lion mask knuckles and paw feet. Marked 'STERLING', probably Cork or Limerick. Gilt washed interior. Diameter 140, height 70. 196gms. \$400
- 570**  
A George III silver eight-slice toast rack, the crescent panelled ring handle crested with a raised arm holding a cross. London 1803 by 'I.T.', various makers noted with these initials. See page 24. \$460
- 571**  
A George III silver helmet shaped cream jug, with reeded handle and rim, raised on a circular spreading stem on a square plinth base. London 1795 by Henry Chawner. 130gms. \$300
- 572**  
Five silver napkin rings, various shapes and decoration, four are Victorian, one Edwardian. \$100
- 573**  
A pair of Edwardian silver napkin rings with decorated borders. Birmingham 1905. \$80
- 574**  
A good silver bun top baluster caster, of Georgian style, London 1909. Height 130. \$150
- 575**  
A pair of George V silver boat shaped comports, on elaborate tendril stems and oval bases. London 1910. Lengths 145. Total weight 300gms. \$250
- 576**  
A good quality William IV silver goblet of campana shape, ornately embossed with grape vine, leaves and scrolls. London 1830 by William Eaton. Inscribed 'To Mr John Salter, Shepherd's Bush, 1833', 'Dahlia Prize'. 323gms. Height 160. \$450
- 577**  
A Georgian silver wine funnel, with gadrooned border and shell tab. London 1824 by John Henry and Charles Lias. \$400
- 578**  
A heavy Georgian Revival silver cake basket, of oval shape with pierced decoration, oval foot and swing handle. Chester 1908. 770gms. Length 325. \$450
- 579**  
A small George III silver tray, the interior liberally embossed with a tavern scene, with raised reeded edge. London 1802 by Thomas Hannam and John Crouch II. 230 x 140. \$320
- 580**  
A Victorian period oval silver bonbon dish, pierced and embossed. Birmingham 1894. Length 170. \$80
- 581**  
A Victorian silver scallop butter dish. Birmingham 1887. Length 130. \$80
- 582**  
A small two-handled silver stem dish of plain design. Birmingham 1911. Diameter 125. \$120
- 583**  
A 925 standard silver miniature America's Cup. N.Z.L. 32 1995. Height on wood stand 80. \$60
- 584**  
An unusual small ecclesiastical lidded jar with gilded interior. London 1966. Height 35. \$150
- 585**  
A silver 'Gin' bottle ticket modelled with mask and scrolling leaves. Birmingham 1961. \$100
- 586**  
A Edwardian miniature silver mustard pot, pierced decoration, blue glass liner. Birmingham 1902. Diameter 40. \$80
- 587**  
A magnifying glass, with an ornate silver handle. Length 170. \$120
- 588**  
A small late Victorian silver card case, shaped for the hip. Chester 1900. Length 80. \$80
- 589**  
A pair of small Victorian silver plate on copper column candlesticks, with square drip trays and matching bases. Height 130. Copper showing. \$120

## PERSIAN RUGS

- 590**  
A Persian rug, in brown/beige tones, the central field with six rows of compressed gul surrounded by multiple border guards. 1830 x 1300. \$200
- 591**  
A small hand knotted Afghan Turkoman runner. 1500 x 500. \$200
- 592**  
A fine Hamadan Lillian Persian wool on cotton rug, with a floral field on a pink ground and multiple border guards in traditional colours. 1450 x 700. \$400
- 593**  
A fine old Persian silk prayer rug, the mihrab in earth tones, decorated with floral motifs and surrounded with multiple panels. Some wear. 850 x 140. \$300
- 594**  
A finely knotted Persian runner, with three central medallions and trailing floral designs in lustrous colours of mainly rose pink and light green. 2750 x 750. \$300
- 595**  
A small hand knotted Afghan Andkhoy rug, of typical design and colours. 1250 x 800. \$220
- 596**  
A good quality flat extra weft Sumak Caucasian rug, with intricate geometric designs, various colours. 2030 x 1180. \$300
- 597**  
Three kilim cushions. \$120
- 598**  
Three kilim cushions. \$120
- 599**  
Three kilim cushions. \$120
- 600**  
A hand knotted Baluchi rug, decorated with rosettes on a burgundy ground framed by a geometric floral border. 1450 x 970. \$240
- 601**  
A hand knotted all wool Baluchi rug, decorated with eight panels of geometric design. 2450 x 1400. \$325

602

**An Afghan all wool rug**, the field unusually decorated with six lozenge medallions, soft red/brown and indigo tones. 2000 x 1270. \$550

603

**A large hand knotted Persian Nain rug**, of traditional formal decoration in pale colours, almost square shape. 2300 x 2000 \$650

604

**A large hand knotted Hamadan carpet**, the field decorated in a herati pattern of predominantly crimson and Prussian blue tones, and framed by a broad floral meandering border. 3800 x 2680. \$850

605

**A hand knotted Persian Shiraz tribal rug**, with three central diamond medallions and intricate boteh motifs, typical dark colours on a rich red ground. 1800 x 2500. \$650

606

**A hand knotted Persian Shiraz tribal rug**, with three central diamond medallions and intricate tiny stylised boteh motifs in colours of red, blue and green. 2280 x 1800. \$550

607

**A hand knotted Afghan Turkoman runner**, the field decorated with a row of large gul motifs, in typical colours of rich dark red and dark blue. 4000 x 800. \$750

608

**A hand knotted Turkish carpet**, the field decorated with two rows of eight diamonds shaped medallions surrounded by scattered rosettes, framed by a geometric border. 1900 x 1250. \$325

608A

**A small hand knotted Baluchi rug**, typical tribal designs, deep burgundy and terracotta. 1400 x 860. \$120

608B

**A Persian Shiraz hand knotted rug**, the central dark blue field containing two central diamond, surrounded by geometric motifs and thick border guard. 1440 x 880. \$120

609

**A Tribal Baluchi rug**, the central ivory panel decorated with a vase of flowers framed by a broad madder red geometric border. 1680 x 900. \$150

610

**A hand knotted Iranian Ardabil runner**, the field decorated with five hexagonal medallions and geometric patterns, framed by multiple borders. 2730 x 700. \$350

611

**An Iranian wide runner**, wool pile on cotton weft and warp, the field decorated with a central panel patterned with stylised ewers and birds, on a field further decorated with geometric designs, framed by multiple borders, in soft faded tones. 3500 x 1550. \$450

612

**A large hand knotted Afghan Turkoman rug**, decorated with three rows of

large gul motifs in colours of rich dark red and dark blue. 2750 x 2050. \$750

613

**A mixed weave Berjusta rug of Caucasian style**, with geometric floral motifs in rich dark colours on an ivory field. 2000 x 1200. \$550

614

**A large hand knotted Ardabil rug**, with central hexagonal medallions and intricate all-over boteh type motifs, in typical colours with five border guards. 3000 x 2020. \$750

615

**A hand knotted Persian Tabriz carpet**, formal floral designs with multiple border guards in typical colours. 3000 x 2000 \$1,200

616

**An Afghan Turkoman carpet**, the field decorated with large 'elephant foot' gull motifs, framed by a geometric border, in black on a deep red ground. 3000 x 2000. \$1,400

617

**A hand knotted Kazak rug**, bold stylised floral designs with a row of central medallions, lustrous colours on a rich red ground. 2050 x 1500. \$1,250

## FURNITURE

618

**A 19thC prie-dieu chair**, raised on turned front legs, upholstered in kilim fabric. Height 1010. \$150

619

**A 19thC mahogany Georgian Revival two-stage circular dumb waiter** with turned and spiral twist column supports, dished tray tops and a plain tripod base. Diameter 500, height 800. \$300

620

**A Victorian pine footlocker**, with steel carrying handles and strapped corners. 870 x 510 x 440. \$200

621

**A 19thC pine Dutch storage box**, the hinged lid opening to reveal a candle tray, the front panelled with octagonal mouldings flanking a large brass escutcheon with original key. 1040 x 560 x 500. \$250

622

**A George III corner washstand**, the middle shelf with a small central drawer, shaped gallery to top, the shelf to base with small shaped stand for jug or bowl. 665 x 446 x 993. \$450

623

**A Victorian rosewood whatnot/canterbury** with two open shelves raised on fretwork sides above a galleried canterbury base and with a drawer in the plinth, supported on turned legs terminating in white porcelain casters. 610 x 405 x 1250. \$450

624

**A Victorian papier-mâché chair**, ebonised finish and inlaid with traditional mother-of-pearl and gilt decoration, upholstered green velvet seat, in the manner of Jennens and Bettridge. \$120

625

**A Victorian mahogany hall stand**, tree form with turned finials for coats and hats, small mirror to central column, lift-up top, drip trays for umbrellas. 660 x 270 x 1860. \$250

626

**A pair of Egyptian Revival 'Thebes' three-legged stools**, to a design attributed to Leonard Wyburd for Liberty & Co., London, c.1894. Oak with highly figured grain, concave seat raised on three flaring legs. Height 400.

Thebes stool designs were inspired by furniture and paintings unearthed from royal tombs in the ancient Egyptian city for which they are named. Leonard Wyburd, who was one of the principal designers for Liberty, patented his designs for the stools in 1884. Liberty continued to make the popular stools into the early 1900s, whilst the Austrian architect Adolf Loos produced variants for his Villa Duschnitz interior. See page 24. \$1,000

627

**A Victorian cast iron umbrella stand**, the decorative back panel cast in relief with an image of Psyche, Victorian registration mark under the drip tray. Height 770. \$250

628

**An old walnut small proportioned three drawer chest**, with brushing slide above three full width drawers of graduated depths, the lower drawer with concave centre reflecting in the shaped apron raised on bracket feet, the drawers with crossbanding, brass bale handles and escutcheons, flame veneered on an oak carcass. 760 x 470 x 910. See page 24. \$1,200

629

**An oak five drawer flat-front chest**, configured as two half-width drawers above three full width drawers of graduating depths, raised on bracket feet. 985 x 450 x 1020. \$650

630

**A large Victorian mahogany chest of six drawers**, two across the top with four graduated full width drawers below, flame veneers, brass bale handles and a shaped apron between the splay feet. Some attention required. 1160 x 500 x 1330. \$650

631

**A Georgian mahogany bow front chest of drawers**, two half drawers over three full width, bracket feet and some stringing, turned handles, sun damage. 1080 x 545 x 1040. \$650

632

**A Georgian mahogany flat front chest of drawers**, four full width drawers, bracket feet, decorative handles and conforming key hole escutcheon, slight bowing to top. 1100 x 520 x 970. See page 24. \$1,000

633

**A good New Zealand colonial carved rimu whatnot bookcase with provenance**, the carved top with a pair of exotic birds above the sectional tiered vertical display shelves with carved



520



523



568



556



567



558



531



570



550



557



645



626



632



633



628



639



643



638



647



framing above four open shelves with carved edge and turned supports. The top front panel with initial monogram carved in relief for Martha Belle Rowe of Herne Bay, given to her by her husband Francis (Frank) Rowe on their wedding day, he was the son of Francis Rowe who mined copper on Kawau Island, a photo of the couple accompanies this lot. 825 x 320 x 1850. See page 24. \$600

**634**  
**An early 1900s rimu Art Nouveau blanket box**, the exterior carved with florals and leaves in whiplash pattern, the interior lined with old tin, scalloped base and on shallow shaped legs. Carved by the vendor's grandmother. 810 x 430 x 490. \$500

**635**  
**A New Zealand colonial rimu double ended roll-arm settee**, with scroll back, straight front, short turned legs and buttoned green velvet covers. Length 2300. \$250

**636**  
**A New Zealand kauri and cedar partners' desk**, the top inset with green leather, three drawers to the frieze, raised on twin pedestals configured with three drawers to one side and a cupboard to the reverse in each. 1525 x 910 x 750. \$1,000

**637**  
**A pair of old French giltwood framed fauteuils upholstered in good tapestries**, the shaped backs upholstered with tapestries of children, the seats with scenes from Aesop's Fables. Some distress to fabric. \$3,000

**638**  
**An ornate French style giltwood and marble console table**, the ornate base with acanthus leaf and floral decoration including swags, shaped stretched base, the shaped mottled dark marble top with thumb moulded edge. 1800 x 520 x 880. See page 24. \$1,000

**639**  
**An antique French style side table**, demi-lune form with mottled tan marble top on a painted base with relief floral swag, frieze decoration, turned and fluted legs. 1190 x 500 x 780. See page 24. \$700

**640**  
**A Louis XVI style wing back chair**, the gilded frame attractively worn, upholstered in a faded 'strawberry' self-patterned brocade. 870 x 700 x 1110. \$250

**641**  
**A French style walnut framed fauteuil**, upholstered in self-patterned ivory brocade, the arms with scroll carving, the legs with foliate carved detail. \$250

**642**  
**Eight good quality Louis XVI-style rosewood dining chairs**, with well carved decoration of fruit, flowers, scrolls and leaves, turned and fluted front legs, shaped fronts and quality brocade fabric covers. \$3,000

**643**  
**A Louis XVI style kingwood bowfront vitrine** with ormolu mounts and breakfront cabetto cornice surmounted by a ormolu crest. Height 1820. See page 24. \$2,000

**644**  
**A French three-fold boudoir screen**, of Rococo styling, gilt wood framed, the upper panels with clear glass, the lower sections with self-patterned chinoiserie brocades. Tallest panel 1830 x 470. \$475

**645**  
**A quality contemporary French style wingback armchair**, the limed wood frame with brass buttoned mushroom toned herring-bone upholstery and fitted loose cushion. See page 24. \$850

**646**  
**A contemporary designer Art Deco French style mahogany side table**, starburst patterned top with four-way pedestal base, gilded highlights. Diameter 640, height 700. \$300

**647**  
**A contemporary designer gilt and mirrored three-drawer commode**, the three full-width flat-front drawers with mirrored fronts and gilded panels with square section handles, bracket type feet. 9150 x 400 x 865. See page 24. \$850

**648**  
**An antique French style side table**, the ebonised top on a distressed paint decorative base with carved frieze and turned and fluted legs. 1060 x 425 x 810. \$300

**649**  
**A French dove grey paint finish buffet**, rectangular top with deep thumb edge, two frieze drawers above an open shelf flanked by fluted columns raised from a platform base. 1160 x 525 x 1020. \$400

**650**  
**A French rosewood bedside cabinet** with Breccia marble inset top above a bank of six small drawers with bun handles. 410 x 380 x 860. See page 29. \$450

**651**  
**A walnut floor standing bookcase in the French manner**, figure walnut veneers, double glazed doors with Medusa head handles above a platform base. 1110 x 350 x 1500. See page 29. \$450

**652**  
**A good quality 19thC French walnut commode**, with variegated grey marble top, a slender bombe full width frieze drawer above three same sized drawers with ornate double swan handles and a slender plinth drawer in base. 1300 x 590 x 1000. With key. See page 29. \$2,200

**653**  
**A French mahogany display vitrine**, with two full length glazed doors and a velvet lined interior with two glass shelves, turned and reeded column

mouldings, leaf and scroll carved pediment, turned finials, small drawer in base and short bun feet. 960 x 380 x 1860. With key. See page 29. \$850

**654**  
**A quality modern solid rosewood banquet dining table and eight chairs**, the rectangular table with two narrow brass inlaid strips, raised on four scalloped square section legs, the 2400 x 1050 x 755. The chairs with rosewood frames and upholstered in oatmeal fine suede, buttoned back, labelled Lorenz & Z Furniture. New replacement cost \$26,000. See page 29. \$8,500

**654A**  
**A Spanish style refectory table**, the oak plank top with clenched ends, raised on a metal cerrule type base. 2200 x 990 x 740. See page 29. \$950

**655**  
**A European burr maple Art Deco dining table and six chairs**, the oblong top with shaped and anthemion carved corners raised on a Grecian trestle base, extending with a butterfly leaf. With six leather upholstered chairs, leather distressed. 2150 x 900 x 770. \$2,000

**656**  
**A set of six 19thC Hepplewhite style mahogany dining chairs**, pierced waisted splat backs, drop-in seats with red velvet upholstery, tapered square section legs. \$600

**657**  
**A harlequin set of six Victorian mahogany balloon back dining chairs**, four with fluted legs and two with 'tulip' legs, the former with carved rail backs and the latter with plain rail backs. \$225

**658**  
**A Victorian mahogany sideboard** with two breakfront drawers above a pair of arched panelled doors, the leaf and scroll carved back with open shelf on slender turned supports. 1350 x 500 x 1450. \$300

**659**  
**A Victorian pine kitchen dresser**, the upper section with three glazed doors, the base with two frieze drawers with bun handles above two cupboard doors flanking a fixed central panel, raised on a plinth base. 1700 x 530 x 2010. \$1,000

**660**  
**A mahogany Georgian Revival kneehole desk**, the oblong top with green leather with gilt tooling above a central frieze drawer flanked by two banks of four small drawers, a two door cupboard in the kneehole, raised on bracket feet. 925 x 500 x 820. See page 29. \$325

**661**  
**A Victorian walnut marble top and mirror backed credenza**, the base with central mirrored panelled door flanked by curved fronted cupboards below open shelves, decoratively inlaid with boxwood detailing, shaped white marble top, the mirrored back with shell and scroll pediment above

an arched central mirror flanked by figured walnut panels inset with oval mirrors and further embellished with turned pilasters and finials. 1500 x 430 x 2040. \$1,500

**662**

**A Victorian walnut twin pedestal desk**, the oblong top inset with tan leather with gilt tooling, three drawers across the frieze raised on two pedestals each with three drawers of graduating depth, raised on bracket feet plinth. 1080 x 600 x 760. \$300

**663**

**A 19thC mahogany standing corner cabinet**, the upper section with astragal glazed doors enclosing three serpentine fronted shelves, some glass needing replacing, the lower section with two panelled doors. Width 910, height 2220. \$400

**664**

**A good modern dark brown buttoned leather wingback armchair**, loose cushion seat, square section legs. See page 29. \$1,200

**665**

**A Victorian mahogany chiffonier**, the upstand back, front and sides sign written with later 'Fry's Chocolate' advertising. 1050 x 400 x 1350. See page 29. \$575

**666**

**An Edwardian Sheraton Revival mahogany lady's writing desk**, the shaped tool leather top with upstand of two pairs of drawers, five drawers to the frieze, one caster requiring attaching. See page 29. \$650

**667**

**An Elizabethan style coffer**, the fascia heavily carved with a panel depicting the Adoration of the Magi, between relief pilasters and panels, the hinged lid with moulded edge and some detail, the spreading base with rope edge, raised on large squat circular feet. 1420 x 630 x 760. See page 29. \$550

**668**

**An Edwardian mahogany side cabinet**, two drawers with turned wood handles bowed square section legs. 560 x 430 x 760. \$180

**669**

**Two Edwardian mahogany Chippendale elbow chairs**, with pierced splats, shaped top rails, stretcher bases and drop-in brocade seats. \$250

**670**

**An Edwardian mahogany Sheraton Revival elbow chair**, the three splats with fan inlay, red velvet seat and tapering square section front legs. \$110

**671**

**A Victorian walnut serpentine demi-lune fold-over card table**, the interior with baize lining, raised on a fluted bulbous column from a quadruped scroll carved base with white porcelain casters. 910 x 460 x 720. \$500

**671A**

**A good Victorian burr walnut demi-lune card table**, green baize lined interior,

the carved column on a conforming four-way base, raised on white porcelain casters. 930 x 460 x 735. \$1,600

**672**

**A Victorian carved walnut parlour chair**, leaf and scroll carved frame, the back with top upholstered section matching the seat in a diamond decorated pale green silk brocade. \$300

**673**

**Two oak country Chippendale side chairs**, with carved scrolling pierced back and chair splat, square legs with stretcher base, drop-in seats, require some attention. 490 x 435 x 925. \$375

**674**

**A pair of contemporary designer ebonised wood and mustard leather Gainsborough chairs**, open arms, brass studded detail to the base edge, the back with Chippendale type irregular trellis design. See page 29. \$2,000

**675**

**A Regency rosewood card table**, the quatrefoil base with chamfered column, with brass casters. The plain top opens and twists to reveal a blue baize interior, some fading. 930 x 490 x 750. See page 29. \$1,000

**676**

**A Regency open elbow armchair**, plain bar back with wrythen twist port, drop-in seat, upholstered in a self-patterned light rose pink brocade. \$250

**677**

**A vintage bronze framed museum display cabinet on original mahogany stand**, tapering front and back panels, side entry. 1525 x 610 x 1875. Note: This and the following three cabinets match those originally used in the Auckland Museum. See page 29. \$1,000

**678**

**A vintage bronze framed museum display cabinet on original mahogany stand**, tapering front and back panels, side entry. 1525 x 610 x 1875. \$1,000

**679**

**A vintage bronze framed museum display cabinet on original mahogany stand**, tapering front and back panels, side entry. 1525 x 610 x 1875. Note: this and the other three cabinets match those originally used in the Auckland Museum. \$1,000

**680**

**A vintage bronze framed museum display cabinet**, narrow rectangular form, side entry, raised on a short ebonised wood plinth. 1830 x 305 x 1940. \$1,000

**681**

**Two small Chinese hardwood side tables**, with carved bamboo decoration and dished tops. 440 x 320 x 610 and 320 x 230 x 420. \$200

**682**

**A pair of Chinese horse-shoe back Mandarin chairs**, the back splats carved with stylised sinuous rondels. Remnants of deep red lacquer polish in places. See page 32. \$800

**683**

**A mid-20thC Burmese rosewood burr slab room stand**, double sided, with natural tight burl edge, highly polished to either side, supported on substantial bracket feet. 1070 x 1020. \$650

**684**

**A pair of Chinese teak Emperor and Empress open elbow chairs**, carved and pierced with dragons, bats, scrolls and cloud motifs, broad shaped back splats, panelled seats and stretcher bases. \$450

**685**

**An ornate Chinese blackwood carved display cabinet**, of multiple shelves in an asymmetrical configuration, along with a small single doored cabinet above a single drawer. The pediment, fascias, galleries and side panels all intricately pierced and carved with beasts and birds amongst flowering blossom boughs. 1150 x 390 x 1920. See page 32. \$1,000

**686**

**A Chinese carved wood life-size figure of Kuanyin**, the Goddess of Mercy, modelled seated upon a plinth base, she holds a mystic pearl in her elevated left hand, her right foot rests upon a lotus flower. Some portions of her robes coloured with remnants of pigment. Height 1500. \$1,200

**687**

**An old Chinese ebonised display cabinet with tiered galleried open shelves**, three small cupboards with mother-of-pearl inlaid decoration and two small drawers in the base. Some attention required. 1360 x 370 x 1320. \$650

**688**

**An Art Deco inspired nest of four Chinese teak tables**, each with fascias carved with stylised flowers and fluting. Largest 510 x 365 x 710. See page 32. \$435

**688A**

**A nest of three Chinese hardwood side tables**, carved and pierced aprons, dish tops, bamboo style legs and stretcher bases. Largest table 500 x 360 x 720. Originally a set of four. \$350

**690**

**A 19thC mahogany Georgian Revival long case clock**, the arched dial named 'W. Brownlee, Hamilton, the silvered ring dial with Roman numerals, railtrack minutes, subsidiary seconds dial and date dial, the hood with fretwork break-arched pediment, supported on wrythen twist columns with gilt metal Corinthian capitals, the trunk with a satinwood and inlaid door flanked by conforming quarter-round pillars. Height 2300. See page 32. \$2,600

**691**

**An antique reproduction Venetian style pier mirror**, long rectangular form with engraved detail, black mirrored back panel. 1450 x 560. \$380

**692**

**An antique French style overmantel mirror**, the rectangular centre framed by eight smaller panels, all bevelled, dark

bronze type finish, the scrolling metal pediment including a plaster urn detail. 1580 x 1030. See page 32. \$400

**693**

**An ornate moulded gilt framed mirror**, the bevelled glass in a double depth moulded frame. 870 x 780. \$150

**694**

**A large and decorative mirror**, the frame moulded with neoclassical shell, scroll and floral designs in high relief framing the oval glass, painted black enamel. 1500 x 1150. \$450

**695**

**A large and decorative mirror**, the frame moulded with neoclassical shell, scroll and floral designs in high relief framing the oval glass, painted black enamel. 1500 x 1150. \$450

**696**

**A large and ornate moulded framed overmantel mirror**, the frame with silvered finish, with decorative elements of neoclassical design including acanthus and laurel leaves between echinus and ribbon borders. 2160 x 1150. \$650

**697**

**A pair of imitation floral displays in decorative gilded and wooden urns**, the urns with four scroll gilded supports to the base. Height overall approx. 1600. See page 32. \$600

**698**

**A pair of modern table lamps**, the free-form branch mahogany bases raised from asymmetrical plinths supporting brass slender columns fitted with American lampholders and parchment shades. Height 1040. See page 32. \$500

**699**

**An antique French gilt metal chandelier**, the open shaped five-arm body supporting 20 scrolling arms each with a lamp fitting, large faceted glass prism drops. Height 920, diameter 760. See page 32. \$750

**700**

**An antique French style large ceiling light fitting**, the painted cast metal frame supporting panels of dark amber and green toned grapes with conforming petal highlights, six chain supports to the top. Diameter 630. \$500

**701**

**A large decorative ceiling light** encrusted with clear and amber glass flower heads. Diameter 600. Height 750. See page 32. \$500

**702**

**A pair of antique style alabaster and gilt metal column table lamps**, with shades. \$160

**703**

**A vintage salt glaze chimney pot**, plain column with shaped top, no maker's marks, minor chipping. Height 680. \$150

**704**

**Two salt glaze chimney pots**, squat form, one marked 'Carder Brothers Ponsonby, Auckland', the other unmarked. Heights 310 and 370. \$200

**705**

**Two vintage chimney pots**, one with plain column and 'Chinaman's hat' top, the other of plain tapering column form with some ridged decoration, both stamped 'Amalgamated Brick and Pipe Ltd, Miramar Works, Wellington', some chipping. Heights 390 and 350. \$150

**706**

**A large T-top chimney pot**, plain column supporting the top with a vent to either side, marked 'Amalgamated Brick and Pipe Co. Ltd, Miramar', Wellington. 550 x 680. \$150

**707**

**An old terracotta octagonal form chimney pot**, with four air vents, shaped base and top, stamped 'Ford & Ogdon, ChCh, N.Z.' Height 850. See page 32. \$250

**708**

**An old salt glaze chimney pot**, plain column with short T-top, the ends of which cut into a crown pattern, large chip to base and some chipping to top. 420 x 850. See page 32. \$150

**708A**

**A NZ colonial Carder Brothers of Ponsonby chimney pot**, salt glazed, scalloped top rim. See page 32. \$250

**708B**

**A 19thC Australian Goodlett & Smith Est.1855 chimney pot**, salt glazed, impressed markers stamp. \$350

**709**

**An old terracotta chimney pot**, a plain column supporting shaped top decorated with scallop shells and scrolls, substantial chipping and cracks but commensurate with age. Height 830. \$150

**710**

**A small T-top chimney pot**, plain column with some ridged decoration, the T-top stamped 'Hutson & Co, Wellington', some chipping. 360 x 720. \$150

**711**

**Two early Auckland salt glaze chimney pots**, one plain squat form with minimal decoration to centre marked 'Crumb, New Lynn', the other of a beehive form marked 'R.O. Clark, Auckland'. Heights 340 and 300. \$200

**712**

**A 19thC salt glaze octagonal chimney pot**, with four lug-type vents to the sides, ridged decoration to the base with a octagonal form 'Chinaman's hat' to the top, firing fault to the cap and some chipping to base. Height 935. See page 32. \$300

**713**

**A New Zealand colonial salt glaze chimney pot**, cannon barrel form, impressed maker's mark 'Lambert Dunedin'. Height 640. \$250

**714**

**A New Zealand colonial salt glaze chimney pot**, similar to above, no maker's mark. Height 600. \$220

**715**

**A tall late 19thC salt glaze chimney pot**, octagonal form. Height 1160. See page 32. \$400

**716**

**A New Zealand colonial late 19thC salt glaze chimney pot**, T-form, two side vents, maker's mark indistinctly impressed to top. Height 990. See page 32. \$300

**717**

**A large concrete garden sculpture of a semi-naked woman** draped to her waist knelling beside an urn, the urn facing forward. Height 640. See page 32. \$400

**718**

**A large old concrete garden statue of an owl**, remnants black, red/brown and ochre paint tones. Height 910. See page 32. \$300

## FINE ART

**719**

**Barry Lett**, 'Oscar' cast bronze seated dog, green patina, 85 x 195 x 215. Raised on a black rectangular polished granite base. See front cover. \$3,000

**720**

**Artist unknown**, untitled bronze sculpture of a seated violinist. Height 440. \$150

**721**

**Rick Lewis (A.R.A.)** 'Big Red' bronze of a leaping red kangaroo, 25/200, commissioned by Porter Galleries, on marble and wooden base. Height incl. base 320. See page 32. \$350

**722**

**J. Druce**, 'Genesis, Chapter Three', bronze sculpture, signed and entitled. Width 320. See page 32. \$250

**723**

**Ella Spicer**, 'View Towards Rangitoto', watercolour, signed. 250 x 320. \$220

**724**

**Russell Hollings**, 'Otago Landscape', oil on canvas, signed, entitled verso. 265 x 415. \$500

**725**

**Heinz Boehnke**, 'Country Track, Cambridge', oil on board, initialled and dated 1973. 290 x 395. \$100

**726**

**Charles Blomfield (1848-1926)**, 'Coastal Scene with Figures on Beach', oil on board, signed and dated 1886. 195 x 345. See inside back cover. \$700

**727**

**Peggy Spicer**, 'Old Auckland Houses', ink and watercolour, signed. 350 x 505. \$300

**728**

**Two works by Trevor Lloyd**, 'Auckland Wharves' and 'Auckland Harbour', pencil sketches, c.1920. 100 x 155 and 110 x 145. \$500

**729**

**Attributed Frank Barnes (1859-1941)**, 'Whangarei Harbour, Auckland 1904', oil on board, entitled and dated. 365 x 620. \$500

**730**

**N. Waters**, 'Tapeka Point, Russell, Northland', oil on board, signed and entitled verso. 595 x 750. \$200



731

**Sir Mountford Tosswill Woollaston**, untitled landscape, watercolour on paper, signed and dated 6/10/'68. Provenance: Purchased Ferner Gallery November 1993, copy of receipt available. 260 x 340. See *inside back cover*. \$1,800

732

**Louise Henderson**, untitled Garden Series, oil on board, signed. 860 x 600, original frame. See *inside back cover*. \$3,800

733

**Megan Jenkinson**, 'Britannia - Britain', 'Britannia Weeps for the Loss of Her Colonies, (From the Virtues Series)', Cibachrome Photograph Collage 2/2, entitled and inscribed 'We are under no king; we must each look to ourselves'; entitled, inscribed, signed and dated 1996 on reverse. 195 x 180 and 495 x 580 (diptych). Together with the book 'Under The Aegis, The Virtues' by Megan Jenkinson, 1996, signed. See *inside back cover*. \$2,600 - \$4,500

734

**Robin Morrison (1944-1993)**, 'Power Lines', vintage Cibachrome print. 245 x 370. See *inside back cover*. \$1,500

735

**A. Lois White**, 'Girl by Stream', c.1934-35 - linocut, signed lower right, 135-100. Note: A companion work sold from the Sir Ivor Richardson Art Collection 2006. See *inside back cover*. \$1,200

736

**Philippa Blair**, 'El Traversano', Ltd Ed. print 18/23, signed, dated 1986, entitled and numbered. 500 x 730. \$140

737

**Philippa Blair**, two works, 'Einbahnstrasse: I' and 'Einbahnstrasse II', artist proof etchings, signed, dated 1984, entitled and detailed. 280 x 130. \$140

738

**Philippa Blair** 'Flying Carpet', acrylic on canvas, signed and dated '80, 1900 x 1345. Note: This work mentioned in Art New Zealand 17 on Exhibitions page, 'In paintings like "Flying Carpet..."'. See *inside back cover*. \$500

739

**Russell Hollings**, 'Tuscan Landscape' (Near Asciano), mixed media, signed, entitled verso. 265 x 370. See *inside back cover*. \$450

740

**Russell Hollings**, 'Wedderburn II', ink on paper, signed, entitled and dated 1995 verso. 390 x 450. See *inside back cover*. \$250

741

**Minnie F. White**, 'Coal Miners', woodblock print. signed. 110 x 110. See *inside back cover*. \$350

742

**Minnie F. White**, untitled 'Wharf Scene with Boat', woodcut, signed. 120 x 200. \$300

743

**Philippa Blair**, 'Topanga Canyon', Artist Proof print, signed, dated 1984,

entitled and detailed 'A/P', 690 x 510. \$120

744

**Barry Cleavin**, 'Violated 2', etching, signed, dated 1975, entitled and numbered 6/30. 250 x 275. \$220

745

**Barry Cleavin**, two works, 'Monument to the Peculiar Quality of Light....' and 'Sacred Cow No. 1 - After Buchanan', Ltd Ed. prints 8/30 and 9/30, both signed, dated 1974, entitled and detailed. 360 x 235. \$160

746

**Barry Cleavin**, two works, 'Heaphy - Sacred Cow 2' and 'Trap - After W.A. Sutton', Ltd Ed. prints 2/30 and 11/30, signed, dated 1974, entitled and numbered. 360 x 235. \$160

747

**Tom Mutch**, 'Buildings and Egmont' screen print 16/26. 285 x 425. See *inside back cover*. \$150

748

**Tom Mutch - 'Mt Messenger/Meditation'**, screen print 34/34, signed, dated 10/10/84, entitled and numbered. 400 x 565. \$150

749

**Tom Mutch**, 'Seven Twenty One', print 23/40, signed, dated '85, entitled and numbered. 385 x 480. \$110

750

**Tom Mutch**, 'Chinese Circus', Ltd Ed. print 12/27, signed, dated '85, entitled and numbered. 595 x 450. \$180

751

**Roy Dalgarno**, 'Girl at Pool', 'Original lithograph 9/12', signed and detailed. 645 x 520. \$200

752

**Bernard Salmon**, 'Go Away', Ltd Ed. print, 12/22, signed, dated 10.5.79, entitled and numbered. 610 x 410. \$100

753

**Bernard Salmon**, 'No', Ltd Ed. print 11/24, signed, dated 20.4.79, entitled and numbered. 610 x 410. \$100

754

**Bernard Salmon**, 'Please', Ltd Ed. print 1/29, signed, dated 5.7.79, entitled and numbered 520 x 400. \$100

755

**Philip Clairmont**, 'Portrait of Vicki', woodcut 1/5 (2), signed, dated '69, entitled and detailed. 670 x 250. See *inside back cover*. \$600

756

**Perry Davies**, 'Sailor's Farewell', signed, entitled and detailed 'Monoprint'. 490 x 350. \$120

757

**Gwenda Jones (1906-87)**, figure study, pencil, signed. Ex. The May Gilbert Estate. 290 x 250. \$250

758

**May Gilbert**, 'Portrait of Guide Rangī Papakura', pencil, entitled 'Rangī'. 160 x 120. \$250

759

**Two works by Petrus van der Velden**, 'Melba', pencil on paper, signed, en-

titled and dated 1910. The subject of these portraits is the artist's baby daughter, Melba, born when van der Velden was 72 years old. 120 x 85. \$800

760

**Raymond Boyce MBE**, set design for New Zealand production of 'My Fair Lady', watercolour, signed and titled. 450 x 330. Raymond Boyce was New Zealand's first professional set designer. He trained in London and immigrated to New Zealand in 1953. His designs were seen in productions by The New Zealand Players, New Zealand Opera Company, Wellington City Opera and the Australian Opera Company. \$100

761

**Raymond Boyce MBE (theatre set designer)** sketch of a set design for 'Beaux Stratagem', watercolour, signed. 400 x 520. \$150

762

**Leslie A. Campbell (Aust./N.Z. 1925-)**, Otago Shearing Shed, oil on board, signed and entitled verso. 220 x 295. \$225

763

**Leslie A. Campbell (Aust./N.Z. 1925-)**, 'Glendhu Bay Cottage, Wanaka', oil on board, signed, entitled verso. 220 x 295. \$225

764

**Colin V. Wheeler (1919-2012)**, 'Early Morning Muster, Nokomai Station, Southland', watercolour, signed. 345 x 290. See *inside back cover*. \$3,000

765

**Colin V. Wheeler (1919-2012)**, 'South Canterbury Pastoral', oil on canvas board, signed and dated '62, entitled on artist's studio label verso. 330 x 430. See *inside back cover*. \$3,000

766

**F.V. (Frederick Vincent) Ellis (U.K./N.Z. 1892-1961)**, 'Oriental Bay' (A view from the artist's living room), oil on canvas board, signed and dated '52. 350 x 385. See *inside back cover*. \$2,000

767

**Charles Decimus Barraud (1822-1897)**, 'Lake Taupo' (A view from the Waikato River at Tapuaeharuru, with European and Maori settlements, looking towards Mounts Ngauruhoe and Ruapehu), watercolour, signed and dated 1889. Frost & Reed, Bristol, U.K., picture dealers label verso (dated 11/8/97). The mount erroneously inscribed 'Lake Tampo, G.D.Barraud'. 200 x 345. See *inside back cover*. \$5,500

768

**Lawrence William Wilson**, 'Titikrono Mt. Southland', oil on board, signed and entitled. 255 x 463. See *inside back cover*. \$850

769

**John Douglas Perrett (1859-1937)**, 'Mitre Peak from Freshwater Basin', pastel, signed. 300 x 490. See *back cover*. \$250

770

**Hilda Wiseman (1894-1980)** 'Mt Camel Northland', watercolour, signed. 265 x 360. \$150



664



652



651



674



654A



654



666



650



667



653



665



660



675



677

- 771**  
**Lance O'Gorman** 'Broadwood Barn, Frailty Be Thy Name' (rural landscape, Broadwood, Northland), palette knife oil on board, signed, entitled verso. 395 x 495. \$150
- 772**  
**Helen Brown (1917-1986)**, Beach, Headland and Island, watercolour, signed and dated '76. 165 x 330. See back cover. \$350
- 773**  
**Helen Brown (1917-1986)**, Bream Head from Waipu, watercolour, signed and dated '76. 110 x 340. See inside back cover. \$350
- 774**  
**William Allen Bollard** 'Arthur's Pass, Canterbury', oil on board, signed, entitled verso. 350 x 245. \$150
- 775**  
**Artist unknown**, South Island mountain and river landscape, oil on board, unsigned. 640 x 1000. \$400
- 776**  
**Russell Hollings** 'Bannockburn', acrylic, signed, entitled and dated 1992-93 verso. 240 x 345. See back cover. \$300
- 777**  
**Russell Hollings** 'Wedderburn', ink on paper, signed, entitled and dated 1995 verso. 300 x 415. See back cover. \$225
- 778**  
**Russell Hollings**, 'Flounder for Dinner', oil on board, signed, entitled verso. 410 x 410. See back cover. \$450
- 779**  
**Russell Hollings** 'Through the Trees, Westland', oil, signed, entitled and dated 1970 verso. 240 x 345. See back cover. \$220
- 780**  
**Jan Nigro** 'Drunken Parrots', monoprint 1/1, signed, entitled and dated '83. 250 x 300. \$200
- 781**  
**John Speedy** 'Clearing Mist, Tangarakau Gorge' (The Forgotten Highway), oil on canvas, signed, entitled verso. 750 x 108. \$300
- 782**  
**Alison (Allie) Eagle** 'Had I Been A Man', acrylic and collage, signed. 820 x 590 \$150
- 783**  
**Alison (Allie) Eagle**, Nude Study, watercolour, signed and dated 1988. 750 x 550. \$125
- 784**  
**Alison (Allie) Eagle**, Untitled Portraits, acrylic and collage. 540 x 690 \$0
- 785**  
**Saffronn Te Ratana**, untitled Figure Study, mixed media. 595 x 185. \$250
- 786**  
**Russell Clark (1905-1966)**, untitled seated figure, charcoal on buff paper, c.1953, copy of inscription attached verso. 310 x 195. \$250
- 787**  
**Nigel Brown**, 'Opera', coloured wood-block print, signed, described, entitled and numbered 3/15. 775 x 415. \$750
- 788**  
**Pat Hanly**, 'Golden Age', lithograph 58/70, signed, dated '80, entitled and numbered. 505 x 570. See back cover. \$2,800
- 789**  
**Gordon Minhinnick**, 'Robbie's World', ink cartoon, signed, entitled and detailed 'Worker's on the Civic Centre Carpark...', 'N.Z. Herald 6.3.73'. 295 x 440. \$140
- 790**  
**Dick Frizzell**, 'Fabrication II', oil on canvas, signed, dated 9/10/93 and entitled. Provenance: Purchased John Leech Gallery 29.10.97. 295 x 395. See back cover. \$3,000
- 791**  
**William James Reed**, 'The Shore in Moonlight', oil on board, signed, c.1950. Provenance: John Leech Gallery, 15 June 1993, purchase receipt available. 590 x 460. \$3,500
- 792**  
**Harry Linley Richardson (UK/NZ 1878-1947)**, 'An Old Identity, Wellington' (inscribed Mr J. Johnson verso), oil on canvas, signed. Illustrated: Art in New Zealand, Sept. 1928 page 19. Provenance: Ex. The McGregor Wright Gallery Collection. 750 x 600. See back cover. \$3,000
- 793**  
**Christian Wilhelm Allers (German 1857-1915)** Portrait of Walter ...? (Brother of the original owner of the McGregor Wright Gallery), charcoal and watercolour, signed with pseudonym 'W. Andresen' and inscribed 'des. 1903, Wellington, NZ'. Allers travelled the world for ten years following a scandal in Capri, earning money from portraiture. Provenance: Ex. The McGregor Wright Gallery Collection. 700 x 535. \$400
- 794**  
**Percy Gower Reid (1890-1975)**, 'Nooge' (A caricature of Lance Corporal Nugent Welch), ink and watercolour on buff paper, signed, entitled, inscribed 'France' and dated 1918. Reid from the New Zealand War Artists' Section produced 'Dial Sights' (1919) from his experiences serving with the New Zealand Field Artillery. Welch, after enlisting with the NZEF in 1916, spent almost two continuous years in action on the Western Front, followed by promotion to Divisional Artist (New Zealand's first official war artist) in 1918. Reid captures 'Nooge' in uniform dancing flamenco braceo. Provenance: Ex. The McGregor Wright Gallery Collection. 640 x 270. See back cover. \$300
- 795**  
**Harry Linley Richardson (UK/NZ 1878-1947)**, Kelburn Houses from the Botanic Gardens under moonlight, oil on canvas, unsigned. Provenance: Ex. The McGregor Wright Gallery Collection. 450 x 325. \$350
- 796**  
**Walter Jenks Morgan (UK 1847-1924)**, Portrait of a milk-maid, watercolour, signed. Provenance: Ex. The McGregor Wright Gallery Collection. 435 x 210. \$225
- 797**  
**Harry Linley Richardson (UK/NZ 1878-1947)**, Portrait of Barbara Verrier Richardson (the artist's daughter), drypoint etching, unsigned. Provenance: Ex. The McGregor Wright Gallery Collection. 300 x 230. \$120
- 798**  
**Harry Linley Richardson (UK/NZ 1878-1947)**, Portrait of a young woman, watercolour, signed, c.1940s. Provenance: Ex. The McGregor Wright Gallery Collection. 190 x 150. \$150
- 799**  
**Marcus King (1891-1984)**, two portrait sketches of men, charcoal, unsigned. Provenance: Ex. The McGregor Wright Gallery Collection. Mounted, unframed, 455 x 320 and 455 x 355. \$200
- 800**  
**Marcus King (1891-1984)**, two portrait sketches of a woman and young man, charcoal, unsigned. Provenance: Ex. The McGregor Wright Gallery Collection. Mounted, unframed, 455 x 355 and 365 x 345. \$200
- 801**  
**A 19thC thoroughbred equestrian study**, a chestnut stallion in a stable, oil on board, unsigned. 420 x 500. See back cover. \$2,000
- 802**  
**John Emms (UK 1843-1912) R.I.**, Study of a Manchester Terrier dog and bitch, oil on canvas, signed and dated 1879. 490 x 750. See back cover. \$5,000
- 803**  
**Cedric Savage (1901-1969)** Mediterranean market scene, watercolour, signed. 500 x 635. \$700
- 804**  
**Edwin Riby (UK 1866-1927)**, 'Grassington Village', (North Yorkshire), watercolour, signed. 260 x 370. \$150
- 805**  
**Edwin Riby (UK 1866-1927)**, 'Kettlewell Bridge, Upper Wharfedale', (North Yorkshire), watercolour, signed, entitled verso. 265 x 365. \$150
- 806**  
**Edwin Riby (UK 1866-1927)**, 'River Kent Estuary - Morcombe Bay (Grange Over Sands)', watercolour, signed, entitled verso. 135 x 380. \$150
- 807**  
**Edwin Riby (UK 1866-1927)**, 'Bolton Abbey and the River Wharfe', watercolour, signed. 370 x 550. \$170
- 808**  
**Mary Jo Bedford**, 'River Styx', photograph 4/10, signed, entitled, numbered and dated '07. 310 x 545. \$250
- 809**  
**Arthur Powell May**, 'English Rural Landscape', watercolour, signed and dated 1884. 275 x 380. \$200



- 810**  
**Wayne Sinclair**, 'Rural Landscape', oil on board, signed. 355 x 495. \$120
- 811**  
**Fedor Van Kregten (Dutch 1871-1937)**, 'Cattle Watering', oil on board, signed. 255 x 365. \$125
- 812**  
**Frank Kelsey (act. c.1887-1923)**, 'Harbour Scene with Fishing Boats, watercolour, signed. 300 x 400. See back cover. \$250
- 813**  
**George Frederic Watts (1817-1904)**, untitled figure study, oil on board. 345 x 270. Labelled to the reverse 'From the G.F. Watts Museum Sale, Sotheby, Belgravia 1982. Lot 38', with other written detail and assorted numbers. See back cover. \$5,500
- 814**  
**Cecil Boyle**, 'Still Life' pastel, signed. 180 x 255. \$100
- 815**  
**A large framed Andrea Palladio architectural copper engraving**, 18thC printing. 385 x 560. \$250
- 816**  
**A large framed Andrea Palladio architectural copper engraving**, 18thC printing. 385 x 560. \$250
- 817**  
**William Aiken (U.S.A. b.1934)**, 'Winter Trees', oil on canvas, signed, entitled and dated verso. 765 x 920. \$220
- 818**  
**William Gilbert Foster (UK 1855-1906)**, 'Exe Beck, Beamsley Beacon, Yorkshire', oil on canvas, monogrammed and dated '78, entitled verso. 390 x 595. \$150
- 819**  
**John Weeks**, 'Alleyway to the Sea - Corsica', pastel on paper, certificated on reverse, October 1991 by Allan Swinton and Hilda O'Connor. Provenance: Purchased John Leech Gallery, November 1991, receipt available. 340 x 280. See back cover. \$1,200
- 820**  
**Frank Walton (1840-1928)**, 'Eton College from the Thames', oil on oak panel, signed, old labels on reverse detailing artist, title and 'Anglo-Australian Society of Artist'. Original gilt frame. 240 x 345. \$500
- 821**  
**William E. Harris**, 'On the Llugwy, just above the Swallow Falls', oil on canvas, signed and dated 1882. 595 x 1000. See back cover. \$750
- 822**  
**Artist unknown**, in the manner of Montague Dawson, 'Sailing Ship and Row Boat on Choppy Seas', oil on canvas, initialled 'M.W.'. 520 x 980. \$200
- 823**  
**Arthur d'Auvergne Boxall (Aust 1895-1944)** Low Tide Fiji, watercolor, signed, inscribed Fiji, dated 1931, entitled verso. 300 x 430. \$225
- 824**  
**Bessie Nakamarra Sims (AUS b.1932)**, 'Janganpa and Ngarlajiyi Jukurrpa' (Possum and Bush Carrot Dreaming), oil on canvas. 1220 x 760. With accompanying certificate of authenticity from the Warlukurlangu Artists' Aboriginal Association. \$850
- 825**  
**Keith Namatjira** 'Haast's Bluff Landscape with Ghost Gum', watercolour, signed. Unframed. 350 x 520. \$120
- 826**  
**Ewald Namatjira**, 'Central Australian Landscape', watercolour, signed. 345 x 495. \$200
- 827**  
**Billy Apple**, 'As Good As Gold' labelled bottle of wine, 'Produced in 1990 by Robard & Butler...375ml...'. \$80
- 828**  
**Mervyn Williams**, 'Caress', lithograph 8/30, signed, dated '72, entitled and numbered. 450 x 610. \$200
- 829**  
**Rodney Fumpston**, 'Egyptian Series' pastel on paper, signed and dated '86, 490 x 640. \$150

END OF SALE





697



682



685



690



692



688



698



699



701



717



707



708



708A



712



715



716



719



721



722

—— Prices realised (hammer price) Cordys 14th November 2017 Antique & Art Auction ——

LOT \$	LOT \$	LOT \$	LOT \$	LOT \$	LOT \$	LOT \$	LOT \$	LOT \$	LOT \$
LOT ...PRICE	81.....\$120	168.....\$250	243.....\$140	336.....\$280	447.....\$300	564.....\$190	645.....\$300	720.....\$1,700	
2.....\$350	82.....\$340	169.....\$350	244.....\$120	337.....\$150	450.....\$420	565.....\$350	649.....\$250	721.....\$1,700	
3.....\$540	83.....\$90	170.....\$120	245.....\$330	338.....\$675	451.....\$200	566.....\$240	650.....\$375	723.....\$550	
4.....\$150	84.....\$120	171.....\$140	248.....\$425	341.....\$220	453.....\$650	567.....\$140	651.....\$260	724.....\$550	
5.....\$280	86.....\$200	172.....\$700	252.....\$675	343.....\$170	454.....\$520	568.....\$210	653.....\$350	724A \$1,400	
6.....\$130	87.....\$120	173.....\$130	253.....\$160	344.....\$240	455.....\$350	569.....\$225	654.....\$260	727...\$1,000	
7.....\$90	88.....\$210	174.....\$450	256.....\$80	345.....\$900	456.....\$2,500	570.....\$170	655.....\$180	728...\$2,200	
8.....\$170	89.....\$220	175.....\$230	257.....\$240	351.....\$1,700	459.....\$2,100	571.....\$270	656.....\$130	729...\$1,800	
9.....\$200	90.....\$140	176.....\$130	267.....\$430	354.....\$250	460.....\$1,500	572.....\$160	657.....\$200	729A ...\$120	
10.....\$500	91.....\$160	177.....\$110	269.....\$350	355.....\$450	462.....\$3,000	573.....\$140	658.....\$130	730.....\$600	
11.....\$300	93.....\$450	178.....\$180	270.....\$300	359.....\$70	464.....\$2,000	574.....\$155	659.....\$140	731...\$1,200	
12.....\$90	94.....\$280	180.....\$200	271.....\$350	361.....\$450	468.....\$1,800	576.....\$70	660.....\$150	732.....\$200	
13.....\$825	95.....\$735	183.....\$145	273.....\$500	362.....\$200	470.....\$1,600	577.....\$230	661.....\$200	733.....\$360	
14.....\$950	97.....\$200	184.....\$280	274...\$6,750	365.....\$290	472.....\$1,650	579.....\$230	662.....\$150	734.....\$280	
15.....\$410	98.....\$380	185.....\$170	276.....\$400	366.....\$150	474...\$2,400	582.....\$150	663.....\$150	735.....\$230	
16.....\$220	99.....\$140	186.....\$190	277.....\$350	367.....\$150	475...\$1,000	584.....\$300	664.....\$210	739.....\$350	
17.....\$170	113.....\$200	187.....\$260	279.....\$190	369.....\$270	476.....\$420	585.....\$800	666.....\$170	740.....\$200	
18.....\$110	114.....\$240	188.....\$360	280.....\$130	370.....\$200	478.....\$280	586.....\$720	668.....\$500	741...\$2,800	
19.....\$150	116.....\$60	191.....\$240	281.....\$170	371.....\$100	479.....\$400	587.....\$475	672.....\$850	741A ...\$700	
20.....\$80	117.....\$70	192.....\$200	282.....\$240	372.....\$100	480.....\$80	588.....\$80	673A ...\$270	741B ...\$620	
21.....\$80	118.....\$60	193.....\$600	283.....\$350	374.....\$200	481.....\$140	589.....\$100	673C...\$240	742.....\$450	
22.....\$200	119.....\$60	194.....\$60	284.....\$110	377.....\$200	483.....\$100	590.....\$260	673E...\$390	743...\$1,250	
23.....\$170	120.....\$60	195.....\$70	285.....\$450	379.....\$100	484.....\$425	591.....\$280	673F...\$725	744.....\$700	
24.....\$160	121.....\$60	196.....\$70	286.....\$950	380.....\$100	485.....\$500	592.....\$160	674.....\$340	745.....\$90	
25.....\$85	122.....\$775	197.....\$100	287.....\$230	381.....\$400	492.....\$350	593.....\$150	675.....\$600	751.....\$50	
26.....\$110	123.....\$80	198.....\$400	288.....\$120	383.....\$250	493.....\$210	595.....\$275	676...\$1,100	752...\$2,600	
28.....\$110	124.....\$80	199.....\$950	290.....\$345	386.....\$350	495.....\$900	596.....\$400	677...\$1,300	754.....\$850	
31.....\$230	125.....\$70	201.....\$550	291.....\$290	389.....\$400	500.....\$690	597.....\$520	678.....\$400	755.....\$340	
32.....\$110	126.....\$80	202.....\$320	292.....\$200	390.....\$90	501.....\$200	598.....\$1,300	679.....\$240	755A ...\$180	
33.....\$160	127.....\$80	203.....\$675	293.....\$70	391.....\$120	502.....\$380	599.....\$170	680.....\$270	756.....\$220	
34.....\$100	128.....\$80	204.....\$460	294.....\$140	392.....\$350	503.....\$410	600.....\$150	681...\$1,150	757.....\$260	
35.....\$80	129.....\$375	205.....\$400	295.....\$100	393.....\$140	506.....\$480	602.....\$190	682...\$1,800	760.....\$600	
36.....\$140	130.....\$300	206.....\$750	296.....\$320	394.....\$80	509.....\$700	603.....\$80	683...\$2,400	763.....\$180	
37.....\$230	131.....\$150	207.....\$260	298.....\$120	395.....\$245	512.....\$190	604.....\$160	685...\$1,500	764.....\$280	
38.....\$130	132.....\$150	210.....\$440	299.....\$100	396.....\$380	513.....\$200	605.....\$80	687...\$1,100	765.....\$150	
39.....\$60	133.....\$230	211.....\$600	300.....\$285	398.....\$200	514.....\$400	608.....\$55	688.....\$425	766.....\$350	
40.....\$80	134.....\$550	212.....\$675	302.....\$420	399.....\$100	515.....\$270	609.....\$40	689.....\$400	767.....\$200	
41.....\$120	135.....\$280	213.....\$450	304.....\$275	400.....\$275	517...\$2,800	610.....\$80	690.....\$300	768.....\$400	
42.....\$160	136.....\$370	214.....\$70	305.....\$120	401.....\$70	518.....\$450	612.....\$95	691.....\$385	769.....\$260	
43.....\$120	137.....\$280	216.....\$240	306.....\$295	406.....\$150	519.....\$160	613.....\$260	693.....\$400	770.....\$400	
44.....\$100	138.....\$120	217.....\$500	307.....\$190	408.....\$70	520.....\$260	614.....\$150	694.....\$190	771.....\$690	
45.....\$70	139.....\$210	218.....\$210	308.....\$190	409.....\$160	521.....\$210	616.....\$80	695.....\$150	772.....\$850	
46.....\$60	141.....\$250	219.....\$190	309.....\$400	410.....\$560	523...\$1,150	618...\$1,000	696.....\$280	773.....\$180	
47.....\$60	142.....\$260	220.....\$190	310.....\$140	420.....\$575	527.....\$130	619.....\$170	697.....\$420	776...\$5,400	
48.....\$120	143.....\$160	221.....\$380	311.....\$80	423.....\$500	528.....\$310	620.....\$400	698.....\$375	778.....\$180	
49.....\$80	144.....\$650	222.....\$260	312.....\$150	425.....\$200	529.....\$150	621.....\$550	699.....\$275	779.....\$300	
50.....\$130	145.....\$400	223.....\$750	313...\$2,675	426.....\$775	530.....\$500	622.....\$160	700.....\$800	780.....\$300	
51.....\$100	146.....\$240	224.....\$150	314...\$2,000	427...\$1,500	531.....\$230	623.....\$320	701...\$1,700	784.....\$100	
53.....\$90	147.....\$220	226...\$1,550	315.....\$650	428...\$1,100	532.....\$170	624.....\$500	702.....\$900	787.....\$425	
54.....\$70	148.....\$300	227.....\$50	317.....\$120	429...\$1,700	535.....\$800	625.....\$460	703.....\$900	788.....\$400	
55.....\$110	149.....\$400	228.....\$100	319.....\$140	431.....\$250	538.....\$150	626.....\$120	704.....\$800	789.....\$400	
56.....\$260	149A...\$160	229.....\$50	320.....\$100	432.....\$260	539...\$2,200	627.....\$150	705...\$1,300	790.....\$100	
58.....\$150	150.....\$130	230...\$1,200	321.....\$90	433.....\$100	540.....\$250	628.....\$100	706.....\$350	791.....\$100	
60.....\$70	152.....\$110	231.....\$240	322...\$1,100	434.....\$110	541.....\$950	629.....\$620	708.....\$875	795...\$1,025	
61.....\$100	153.....\$150	232.....\$420	323.....\$245	436.....\$160	542.....\$100	632.....\$50	710.....\$500	796.....\$800	
62.....\$100	155.....\$80	233.....\$140	325.....\$160	437.....\$170	543.....\$450	633.....\$210	711.....\$600	797...\$1,300	
63.....\$80	156.....\$120	234.....\$140	326.....\$140	438.....\$110	549.....\$250	634.....\$210	712.....\$550	798.....\$700	
64.....\$260	160.....\$60	235.....\$170	329.....\$200	439.....\$160	550.....\$330	635.....\$320	713.....\$545		
65.....\$90	161...\$1,050	236.....\$120	330.....\$100	440.....\$90	555.....\$65	637.....\$300	714.....\$725		
66.....\$100	162.....\$150	238.....\$275	331.....\$80	441.....\$120	556.....\$210	639.....\$250	714A ...\$500		
70.....\$160	163.....\$160	239.....\$275	332.....\$180	442.....\$300	557.....\$300	640.....\$220	715.....\$200		
72.....\$240	164.....\$120	240.....\$275	333.....\$200	443.....\$350	560.....\$110	641.....\$260	716.....\$525		
73.....\$220	165.....\$350	241.....\$160	334.....\$500	445.....\$200	561.....\$170	642.....\$80	717...\$1,300		
80.....\$80	166.....\$540	242.....\$200	335.....\$500	446.....\$340	563.....\$150	643.....\$650	719...\$2,600		





## Postal Bidding

Ph: (09) 523 1049 / Email: info@cordys.co.nz / www.cordys.co.nz  
**There is a 17.25% Buyer's Premium (including GST) on the hammer price**

Bidding Number		If applicable, otherwise we use your surname
Full Name		
Address		
Email Address		
Phone	Bus.	A/H

Lot #	Brief Description	Bid Amount \$

Please bid on my behalf at the above sale for the following lots. These bids are to be executed as cheaply as permitted by other bids or reserves. Buyers are reminded to get their bids in early to ensure their placement. I agree to comply with the Conditions of Sale as printed in this Catalogue.

SIGNATURE

Date:        /        / 2017

## Catalogue Subscription

Please return completed form to Cordy's Auckland office,  
 PO Box 74071 Greenlane Auckland 1546

Please forward me the following catalogues,  
 (postage within New Zealand included,  
 overseas subscribers please add costs as noted):

	Tick	NZ Cost	Australia /Pacific	EUROPE /USA
Antiques, Estate Jewellery, Oriental, Tribal Art, Fine & Applied Art for Monthly Photo Catalogues	<input type="checkbox"/>	\$100	\$150	\$200

All costs noted are in New Zealand dollars. I enclose my cheque payable to John Cordy Ltd for the above ticked catalogues, totalling NZ\$\_\_\_\_\_.00

If extra catalogues in the categories chosen are produced, these will be sent to you at no extra cost. Overseas subscribers must provide a bank draft in New Zealand dollars to John Cordy Ltd.

Name

Address

City

Country

---

## Conditions of Sale

---

1. The highest bidder to be the purchaser subject to the Auctioneers having the right to refuse the bid of any person. Should any dispute arise as to the biddings, the lot in dispute to be immediately put up for sale again at the preceding bidding, or the Auctioneer may declare the purchaser which will be conclusive.
2. No person shall advance less at a bid than a sum nominated by the Auctioneer and no bid shall be retracted.
3. All lots are sold subject to the right of the seller or his agent to bid or else to impose a guide or reserve price.
4. The purchaser to fill in bidding form before the sale giving details of name, address, bank etc, and to sign such form declaring knowledge of buyers obligations. Immediately after the sale, the purchaser to pay down 10% of the purchase price in part payment and shall pay the balance within five days of the date of sale. All lots to be paid for in full and removed from Cordy's premises same week of sale.
5. The purchaser shall pay to John Cordy Limited (Cordy's) a premium of 15% of the hammer price together with GST on such premium at the current rate.
6. All lots are sold as shown and with all faults, imperfections (visible or not) and errors of description. Neither Cordy's or its vendor are responsible for errors of description or for the genuineness or authenticity of any lot or for any fault or defect in it and make no warranty whatever. Buyers proceed upon their own judgement.
7. Cordy's act as agents and have full discretion to conduct all aspects of the sale and to refuse any bidding or to withdraw any lot or lots from sale without in either case giving any reason.
8. All lots are at the buyers risk from the fall of the hammer and are to be taken away at the buyers expense immediately after the sale. Cordy's will not be responsible if any lot is lost, stolen, damaged or destroyed after the sale. If the lots are not cleared and paid for the same week of the sale they may then be sold immediately either publicly or by private treaty, without notice being given to the defaulter.
9. Upon failure of the purchaser to comply with any of the above conditions, the money deposited in part payment shall be forfeited and the defaulter shall make good any loss arising from the re-sale together with the charges and expenses in respect of both sales.
10. No goods are to be removed while selling is in progress. Receipted invoices must be produced prior to delivery of any lot.
11. The Auctioneers reserve the right to request identification in the case of any purchaser not known to the Auctioneer who pays by cheque and can insist on cash or a bank cheque.
12. Charging to credit cards or payment by overseas cheques will not be accepted as means of payment.
13. No person purchasing an item which falls within the provisions of the Antiquities Act 1975 or the Arms Act 1958 shall be entitled to take possession of the item unless and until such person has produced to Cordy's a licence under the appropriate Act.
14. All lots to be paid for in full and removed from the premises the same week of the sale.
15. The buyer shall be responsible for any removal or storage charges on any lot not taken away the same week of the sale. If for any reason storage is not available at Cordy's premises arrangements will be made to transport and store uncollected goods elsewhere solely at the buyers expense. Cordy's will not be liable to the Purchaser for them in any respect.
16. The Auctioneer cannot be held responsible for any injury or damage to persons or property through attempts to fire firearms which are sold as collectors items only.
17. All electrical goods are sold on the basis of their decorative value only and should be assumed not to be operative. It is essential that prior to any intended use, the electrical system is checked and approved by a qualified electrician.

### Important Notice

All lots sold 'as is' in accordance with Paragraph 6 of the Conditions of Sale. Intending buyers should always satisfy themselves as to the condition and description of any lot and their attention is drawn to Paragraph 6.

---

## Postal Bids

---

Instructions to bid at sales are accepted by Cordy's and are carried out free of charge. Lots will always be bought as favourably as allowed by other such bids, bidding in the saleroom and any reserve. VENDORS are requested to read and are bound by the Conditions

of Sale printed on the reverse side of Cordy's Contract to Sell. PRESALE ESTIMATES are intended as a guide only. Cordy's staff are available during viewing times to assist prospective buyers with estimates and auction room procedures.

---

## Charges and Commissions

---

1. All lots sold with hammer price between \$1.00 to \$99.00 will be charged at 17% commission.
2. All lots sold with hammer price \$100.00 and over will be charged at 12% commission.
3. Vendors will be charged insurance at the rate of 1% against each lot. GST at the current rate will be charged against expenses.

**A buyers premium of 15% will be charged and GST at the current rate will be charged on the premium.**  
**All lots sold are to be paid in full and removed from Cordy's premises the same week of sale.**

---

## General Information

---

INSPECTIONS are made and advice given concerning the sale of Antiques and Works of Art free of charge at Cordy's in Auckland, and for a reasonable fee elsewhere.

VALUATIONS for insurance, probate or family division are undertaken on either a quotation basis or a small percentage plus travelling expenses.

IF BUYING FOR EXPORT, please enquire as to GST status of vendors.

INSTRUCTIONS to bid at sales are accepted by Cordy's and carried out free of charge. Lots will always be bought as cheaply as is allowed by the bidding in the saleroom and any reserves imposed.



## Upcoming Auctions

4th December	Estate/Collectable Auction	View Friday & Monday prior
<b>12th December</b>	<b>Antique &amp; Art Auction</b>	<b>Entries close 17th November</b>
18th December	Special Christmas Auction	View Friday & Monday prior
<b>Cordy's closes Friday 22nd at midday</b>		

### 2018

<b>23rd January</b>	<b>Antique &amp; Art Auction</b>	<b>Entries close 13th December</b>
30th January	Estate/Collectable Auction	View Friday & Tuesday prior (Holiday Monday)
5th February	Estate/Collectable Auction	View Friday & Monday prior
12th February	Estate/Collectable Auction	View Friday & Monday prior
19th February	Estate/Collectable Auction	View Friday & Monday prior
<b>27th February</b>	<b>Antique &amp; Art Auction</b>	<b>Entries close 1st February</b>
5th March	Estate/Collectable Auction	View Friday & Monday prior
12th March	Estate/Collectable Auction	View Friday & Monday prior
19th March	Estate/Collectable Auction	View Friday & Monday prior
<b>27th March</b>	<b>Antique &amp; Art Auction</b>	<b>Entries close 2nd March</b>
3rd April	Estate/Collectable Auction	View day of auction only
9th April	Estate/Collectable Auction	View Friday & Monday prior
16th April	Estate/Collectable Auction	View Friday & Monday prior
<b>24th April</b>	<b>Antique &amp; Art Auction</b>	<b>Entries close 29th March</b>
30th March	Estate/Collectable Auction	View Friday & Monday prior
7th May	Estate/Collectable Auction	View Friday & Monday prior
14th May	Estate/Collectable Auction	View Friday & Monday prior
<b>22nd May</b>	<b>Antique &amp; Art Auction</b>	<b>Entries close 27th April</b>
28th May	Estate/Collectable Auction	View Friday & Monday prior

CORDY'S  
AUCTIONEERS

### JOHN CORDY LIMITED

FINE ART AUCTIONEERS AND APPRAISERS

180 GREAT SOUTH ROAD, REMUERA, AUCKLAND 1051, NEW ZEALAND

P.O. BOX 74071 GREENLANE PHONE (09)523-1049 FAX (09)520-7186

EMAIL [info@cordys.co.nz](mailto:info@cordys.co.nz) WEBSITE [www.cordys.co.nz](http://www.cordys.co.nz)





726



731



732



735



733



738



740



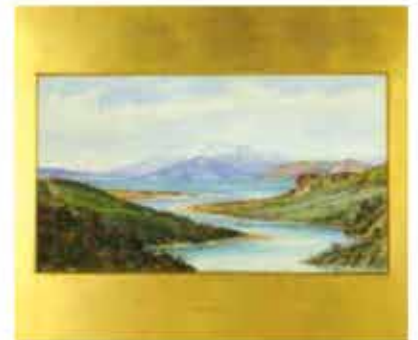
755



747



739



767



764



741



766



765



734



773



768





802



772



779



778



788



801



794



792



776



821



769



777



819



813



812



790