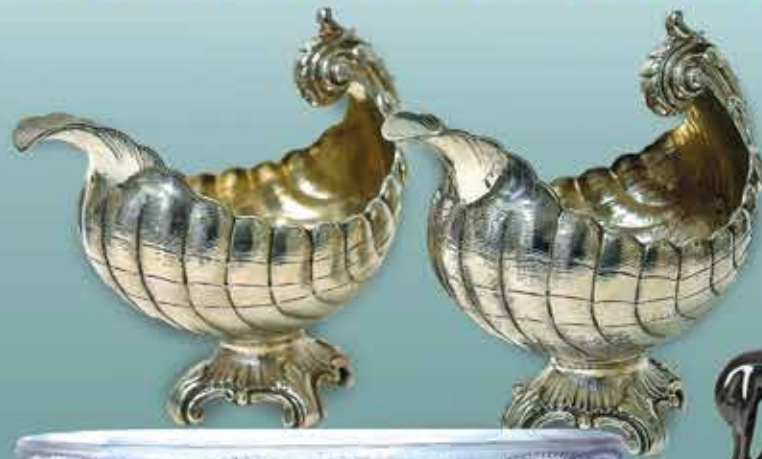




CORDY'S

ANTIQUQUE & ART AUCTION

14TH NOVEMBER 2017



Recent Auction Highlights



A spectacular walnut carved Black Forest long case clock. Achieved \$8,000



A pair of modern lady's 18ct. white gold diamond and rubellite drop earrings. Achieved \$3,600



An impressive modern lady's 18ct. white gold and diamond bracelet. Achieved \$16,500



An impressive fancy yellow multi-diamond and 18ct. yellow gold bracelet. Achieved \$17,000



Raymond Ching, 'Eurasian Sparrow Hawk'. Achieved \$4,750



An 18ct white gold yellow sapphire and diamond ring. Achieved \$2,300



A large and impressive early 19thC Chinese famille rose lidded jar. Achieved \$7,250



An impressive Japanese Edo period Samurai suit of armour. Achieved \$5,750



Norbertine Von Bresslern-Roth (Austrian 1891-1978). Achieved \$2,550



A pair of Chinese cloisonné vases. Achieved \$2,800



A George III ornate marquetry inlaid oak longcase clock. Achieved \$7,250



An 18ct. gold and diamond ring. Achieved \$6,500



Don Binney, Pipiwaharuroa. Achieved \$90,000



A rare and historically important George III lidded Scottish silver large tureen. Achieved \$6,500



A good Barry Brickell salt glazed dog boat. Achieved \$17,500



An uncommon Crown Lynn dark blue McAlpine refrigerator jug. Achieved \$3,050



An impressive large Len Castle branch pot. Achieved \$5,000



An Italian alabaster bust of a young woman. Achieved \$3,900



A quality 19thC French walnut and ormolu bureau plat. Achieved \$14,000



A rare 1930s Schuco #5000 Radio Maybach tinplate wind-up car. Achieved \$1,200



A pair of Crown Lynn Wharetana Maori Art 'Moko' book-ends. Achieved \$3,500



An estate white gold ladies 2.26ct diamond solitaire ring. Achieved \$15,000



An outstanding white gold, star sapphire and diamond pendant. Achieved \$8,000



Crown Lynn Wharetana Maori Art Pottery wall plaque. Achieved \$2,800



A large-scale model of the clipper ship 'Canterbury'. Achieved \$3,500



An impressive 18ct gold, diamond and tourmaline dress ring. Achieved \$5,500



A set of extinct Irish elk horns and skull. Achieved \$28,000



A finely carved 'palm' (fingering) piece in rich red lacquered amber. Achieved \$15,000



A rare N.Z. 1935 Waitangi Crown. Achieved \$5,500



A quality large Roy Cowan (CNZM MBE 1918-2006) salt glazed floor pot. Achieved \$12,000



Sydney Lough Thompson, 'Fishers at Work, Concarneau'. Achieved \$9,500

Invest in the future



www.antiquesaregreen.org

recycle the past.

NOTE: Hammer prices shown excluding premium.



Antique & Art Catalogue

Starting at 9.30am with The Slater Collection Part 2 of New Zealand historical pottery including many fine examples of rare Crown Lynn, Almagamated, Milton, Temuka and Titian ware. Together with items from various estates and private vendors, a wide array of miscellaneous, fishing items, musical items, Dame Malvina Major's sheet music collection, New Zealand historical, the largest carved kauri gum bust of 30+ kilos, maritime collection ex. Fosters Chandlery, art glass, fine porcelain and China, Worcester, Moorcroft, etc. Oriental section of over 100 lots; Chinese jade, porcelain, bronzes etc.

The jewellery section starting 5pm; over 100 lots, spectacular diamond & rubellite necklace, diamond bangles, bracelets, earrings, a good selection of precious stone rings, etc., wrist watches, French clocks, collectors silver, Persian rugs, a good selection of Georgian, Victorian, Colonial and Oriental furniture and decorator items, a very fine Georgian housekeeper's cupboard etc. The fine art includes entries by William H. Buck, Banksy, Chagall, Ken Kendall, Russell Hollings and Aston Greathead plus many more. This auction must be viewed.

Tuesday 14th November 2017 at 9.30am

Helen Slater Collection	1 - 69
Miscellaneous	70 - 197
Fosters Maritime Collection	198 - 224
Militaria	225 - 229
Artefacts, Tribal & NZ Historical	230 - 278
N.Z.Studio Art	279 - 296
Glass	297 - 308
Modern Movement	309 - 315
China & Porcelain	316 - 342
Oriental	343 - 410

Tuesday 14th November 2017 at 5.00pm

Jewellery	420 - 532
Clocks & Watches	533 - 552
Silver	553 - 648
Persian Rugs	649 - 673
Furniture	674 - 733
Fine Art	734 - 799

Please note all lots are illustrated in our online catalogue; www.cordys.co.nz

The sale may be viewed at the following times:

Friday 10th November	9.00am - 5.00pm
Sunday 12th November	11.00am - 3.00pm
Monday 13th November	9.00am - 5.00pm

FRONT COVER LOTS



Lot 686
Four Fold
Screen.



Lot 685
Six Fold
Screen.



Lot 313
Clarice
Cliff Vase.



Lot 458
Yellow
Diamond
Bracelet.



Lot 274
Ernest Joyce
& Shackleton
Historical Items.



Lot 314
Lalique
Bowl.



Lot 14
Crown Lynn
medium Black
Swan.



Lot 618
Pair Russian
silver sauce
boats

CATALOGUES \$12

A 15% percent buyers premium applies to this auction
plus G.S.T. on premium = all up 17.25%
Catalogue also online at www.cordys.co.nz.

JOHN CORDY LIMITED

FINE ART AUCTIONEERS AND APPRAISERS

180 Great South Road, Remuera, Auckland 1051, New Zealand

P.O. Box 74071 Greenlane Phone (09)523-1049

Email info@cordys.co.nz Website www.cordys.co.nz



The Catalogue

The figures given along side each lot are guide prices only.
Measurements throughout are given in millimetres width x depth x height.
This auction includes some entries from vendors "In Trade".

TUESDAY 14TH NOVEMBER 2017
1ST SESSION AT 9.30AM

— HELEN SLATER COLLECTION —

1
Milton Pottery circular pedestal stand, mottled majolica type glaze, impressed circular mark, Graham and Winter period. Diameter 218. \$180

2
Milton Pottery majolica glaze bread plate, Graham and Winter period, verse to the rim, impressed diamond mark to base. Length 290. See page 5. \$350

3
Christchurch Brick Co. squat circular vase, blue glaze, impressed coggle decoration, impressed mark. Diameter 110. See page 5. \$110

4
Two early Crown Lynn pottery items, the blue ovoid vase with incised fractional number and printed mark, the tall narrow brown mottled glaze jug with leaf moulded detail, impressed to the base 23. Heights 185 and 265. \$120

5
An early Crown Lynn large elephant, trunk raised, mottled dark red and brown glaze, incised numbers to one foot. Length 220. See page 5. \$180

6
Two Crown Lynn vases, one earlier with fractional number, incised marks, stiff leaf design; the other with pale blue glaze and impressed mark .84. Heights 145 and 185. \$110

7
Three Crown Lynn animal vases, includes kiwi, three dogs and rabbit, incised number to base of each, the dogs with tiki mark. \$110

8
Crown Lynn large white glaze swan vase, the neck moulded within the body, impressed .170. and printed Crown Lynn mark. Height 230. \$180

9
Crown Lynn large size white glaze swan vase, the neck separate from the body, printed crown mark. Height 210. \$200

10
Crown Lynn medium size white glaze swan vase, the neck separate from the body, moulded number in relief to base '2147'. Height 155. See page 5. \$400

11
Crown Lynn medium size swan vase, similar to above, unglazed, only bisque fired. See page 5. \$300

12
Crown Lynn small white glaze swan vase, impressed number .154. and printed crown mark. Height 100. See page 5. \$80

13
Rare Crown Lynn large black glazed swan vase, the neck separate from the body, impressed number .170. Height 210. See page 5. \$800

14
Rare Crown Lynn medium size black glaze swan vase, the number in relief to base '2147'. Height 150. See front cover and page 5. \$700

15
Rare Crown Lynn small black glaze swan vase, impressed number '154' and printed crown mark to base. Height 100. See page 5. \$250

16
Two Crown Lynn white glazed wall pockets, one with seahorse, the other as a stylised shell, printed mark to each. Heights 220 and 210. See page 5. \$110

17
Three Two Crown Lynn matte white glazed wall pockets, restrained floral designs, one with hair cracks, printed mark and impressed number to each. Heights 210, 200 and 180. \$110

18
Three Crown Lynn matte wall pockets, two glazed white and one matte blue, ribbed and lobed forms, printed and impressed marks. 270, 180 and 165. See page 5. \$110

19
Three Crown Lynn wall pockets, printed and impressed number to each. Heights 220, 185 and 85. \$110

20
Three Crown Lynn coloured wall pockets, one corner form with three tapered ribbed sections, impressed #.487., one of flared trunk form with tan glaze #.122. and one with Royal Oak label in matte cream glaze as a single flower, impressed number #.474. Heights 210, 145 and 120. \$110

21
Three small Crown Lynn glazed wall pockets, two of matching form in green and yellow glaze, shape #.465., the other flared of shape #.464. Heights 112. \$80

22
Three Crown Lynn matte mint green trough form vases, printed mark and impressed number to each #.549., .550. and .552. See page 5. \$120

23
Two Crown Lynn mint green novelty vases, includes a carriage #557 and

a wishing well #556, both with printed tiki mark. See page 5. \$110

24
Two Crown Lynn mint green novelty vases, one a rocking chair #559, the other as a cuckoo clock #.58, both with printed tiki mark. See page 5. \$100

25
Four Crown Lynn matte mint green glazed vases, includes a trough #.510., a float bowl with hair crack to rim #66-8, small heart wall pocket #503 and a clog #515 \$110

26
Two Royal Oak pottery vases, banded glazes on Crown Lynn blanks, printed mark to each. Heights 180 and 130. \$120

27
Two Royal Oak wall pockets, paper label, matte glazed, the shell with hair crack, the daffodil with printed mark and impressed number #541. Heights 170 and 125. \$80

28
Two Temuka Ware pottery electric jugs, the black lids named 'NEECO', mottled blue and majolica type glaze, impressed mark to base of each. See page 5. \$120

29
Two Temuka Ware pottery electric jugs, similar to above, mottled tan and white. See page 5. \$120

30
Two Temuka Ware pottery electric jugs, named lids to each, mottled light blue and mottled dark brown. \$120

31
Two Temuka Ware pottery electric jugs, the black lids named 'NEECO', paper labels to one, green and black mottled glazes. \$120

32
Two Temuka Ware lidded pottery electric jugs, one hexagonal in mottled tan glaze, the other of octagonal form. \$120

33
Two Temuka pottery items, an Art Deco diamond form jug in tan glaze and a grape leaf dish in mottled brown, green and yellow glaze, both with potter's mark. Height 150, length 185. \$110

34
Two Temuka double shell tall trough vases, one with gloss blue highlights to the sides and base, both with printed potter's mark. Heights 175 and 185. \$120

35
Two Temuka pottery vases, one baluster with mottled tan on brown glaze, the other larger of ovoid form with pink

glaze, both with printed marks. Heights 180 and 195. \$110

36

Two Jova Rancich pottery pieces, a majolica glazed bowl and a blue glazed squat vase with some damage, both with potter's marks. Diameter 120 and 105. \$110

37

Jova Rancich large jug, mottled orange/red glaze with green highlights, yellow interior, incised maker's marks to base. Diameter 180, minor fritting. See page 5. \$160

38

Two Jova Rancich vases, one of baluster form in blue glaze, some faults and a mottled tan glazed trumpet form vase, both with impressed potter's marks. Heights 195 and 230. \$160

39

An O.C. Stephens pottery vase, flared baluster form, soft pink interior glaze, printed mark to base. Height 130. \$80

40

An O.C. Stephens tall trough form vase, tall wavy sides, soft pink interior, printed mark to base. Height 130. \$110

41

An O.C. Stephens fan form vase, soft pink interior, printed maker's mark to base. Height 163. \$120

42

An O.C. Stephens lidded potpourri, soft pink glaze, pierced insert top, printed mark to base. Height 115. See page 5. \$120

43

Two O.C. Stephens pottery vases, one of nautilus form, the other of boat form with long angular handles, soft green interior, both with printed potter's marks. Lengths 135 and 210. \$120

44

Three O.C. Stephens pottery pieces, a small blue pot, squat red vase and green trough vase, all with printed marks. \$130

45

Two O.C. Stephens pottery pieces, a wrythen panelled blue glaze vase with orange highlights to the top rim, small flake chip to rim and a spherical dark teal green vase, both with potter's mark to base. Heights 100 and 73. See page 5. \$100

46

Two O.C. Stephens small bowls, one with green interior, the other all green. Potter's mark to both. Diameters 80 and 85. \$80

47

A pair of O.C. Stephens candlesticks, soft red glaze, some faults, printed marks. Diameters 126. \$90

48

An O.C. Stephens painted vase, baluster form, painted with leafy branches in red dominant glaze on mildly textured

pale tan ground, printed mark. Height 115. See page 5. \$140

49

Three O.C. Stephens small pottery dishes, green, yellow and blue patterned interiors, each with potter's mark, the largest with minor flake chipping to rim. \$120

50

An O.C. Stephens lidded storage jar, brown glaze, ribbed form, printed mark. Height 110. See page 8. \$120

51

Three O.C. Stephens graduating bowls, the smallest with purple/red interior, yellow and green to others, printed mark to each. Diameter 80, 140 and 200. \$160

52

Two O.C. Stephens pottery pieces, a log form trough vase, brown glaze and a green glaze shallow bowl, both with potter's marks. Length 200, diameter 160. \$120

53

Four O.C. Stephens pottery pieces, three with green glaze, jug, small bowl and oval dish together with a long boat form soft red glaze dish, printed mark to each. Dish length 260. \$120

54

An O.C. Stephens trough form vase, long rectangular form, ribbed sections, green overall glaze, printed mark. Length 280. \$110

55

An O.C. Stephens wall vase, leaf form, green glaze, printed mark. Height 195. See page 8. \$120

56

Two Amalgamated pottery vases, one mottled green of tall flared form, impressed and incised fractional numbers, height 235. The other mottled blue with similar marks, height 185. \$110

57

Two Amalgamated pottery pieces, a large float bowl and an Art Deco relief decorated ovoid vase, green/blue mottled tones, incised and impressed marks. Diameter 275, height 196. \$110

58

Two Amalgamated pottery flared bowls, flared panel form, mottled pale blue and green, impressed and incised marks. Diameter 260. Minor flake chip. \$110

59

Two Amalgamated pottery vases, heavily glazed in various green dominated tones, printed and incised marks, hair crack to the ovoid vase. Heights 195 and 190. See page 8. \$100

60

Three Amalgamated pottery trough vases, various glazes, printed mark to the largest, impressed and fractional and incised numbers to the others. See page 8. \$110

61

Three Amalgamated pottery pieces, two jugs and a wooden lidded vase, impressed and incised marks to base. \$100

62

Three Amalgamated pottery vases, purple dominant tones, the tallest Art Deco vase with chip to foot, printed and incised marks. Height of Deco vase 215. \$110

63

Three Amalgamated pottery vases, various glazes, printed, impressed and incised marks. Heights 145, 120 and 100. \$110

64

Three Amalgamated pottery items, two jugs and vase, moulded relief decoration to each, mottled green dominant tones, impressed, printed and incised marks. \$110

65

Two Amalgamated pottery items, an Art Deco spherical ribbed vase with firing hair crack and tall jug, printed mark to base of each. \$110

66

Ten Amalgamated small pottery pieces, includes; three egg cups and seven vases, various glazes and marks. \$120

———— MISCELLANEOUS ————

70

An unusual fine weave canvas oil skin hen duck decoy, body hand stitched, pack with kapok, wooden bill and glass eyes, complete with early anchor and string. Length 300. See page 8. \$220

71

A fine weave canvas oil skin drake duck decoy, as above. Length 290. See page 8. \$220

72

A c.1930s hand carved painted wooden 13½" duck decoy, black, painted eyes, swivel head lead keel still attached. Together with a wooden display stand. Length 330. See page 8. \$230

73

A well weathered 15½" wooden mallard hen decoy, with swivel head and glass eyes. Length 380. \$220

74

A good 3½" brass c.1885 Farlow made salmon reel, bone handle, strong permanent check, fish logo to foot and fully embossed 'Chas Farlow, 191 Strand, London. See page 8. \$200

75

A c.1890s P.D.Malloch of Perth 4½" brass salmon reel, embossed to faceplate, large ivory handle, brown ebonite back plate, strong permanent check and quality German silver bound rims. See page 8. \$240

- 76**
A 5½" Scarborough wooden fishing reel, brass foot and bulbous wooden handles with large brass eyelets and in good working order. \$90
- 77**
A quality c.1910 4½" Heatons made salmon reel, dark mahogany, heavy star back, on/off check, Bickerdyke line, wing nut pressure brake and release, wood handles and brass lined spool with line. \$160
- 78**
A Canadian Peetz 6" mahogany wood and brass game fishing reel, brass lined spool, on/off check, Bickerdyke line guide, large wing nut pressure clutch braking systems, wooden handles. Reel has never had line on and has been dry stored since 1950-60s. See page 8. \$180
- 79**
An original brass and stainless steel poachers' gaff, copper belt clip and hook protector and embossed with 'Made in Great Britain'. Length 620, extended 880. \$90
- 80**
A vintage c.1920-1930s Allcocks 16 compartment window fly box, with 100 dry flies and further older flies attached to felt lid. Length 170. \$120
- 81**
A large c.1910 Ogden Smith 14 compartment metal fly box, with original black exterior and brass oval logo to side. Length 190. See page 8. \$160
- 82**
An unusual vintage English kidney shaped wooden fishing creel, traditional cream interior, metal closing latch to lid, complete with canvas carry strap. 330 x 190 x 300. See page 8. \$300
- 83**
A wooden line winder with copper and brass fittings, along with an associated Tisdalls 4" star-back reel with brass Bickerdyke line guide and horn handles, c.1930. \$120
- 84**
A solid brass side winder reel, Malloch's Patent stamped on face plate, 4" face plate with large wooden handle, the reel twists for retrieve or cast. c.1925. See page 8. \$150
- 85**
A 7" wooden trolling reel, with brass 'free spool' and cathedral back, locking centre screw and two large wooden handles, c.1920. \$130
- 86**
A walnut and aluminium 'transitional' reel, (face plate wooden, back plate aluminium) with brass foot, Slater style latch and two handles on face, brass line tension button on back, c.1940. \$150
- 87**
A 4¼" Birmingham plate wind trolling reel, with ebonite back plate, brass centre pin and nickel silver rim. Front plate with horn handle and ebonite edged nickel silver rim, c.1920. See page 8. \$160
- 88**
A 2½" McCarthys (Dunedin) brass centre pin reel, with wood handle and original silk line, c.1920. See page 8. \$90
- 89**
A 2" McCarthys (Dunedin) brass centre pin reel, with horn handle, a rarer example, c.1900. \$100
- 90**
A 4" walnut and brass reel, the foot and star back stamped 'Sun', 'Patent' and 'Klynker', additionally marked 'William Hazard' (anglers' outfitters Customs St., Auck), drag button on star back, two handles, brass lined back plate and line guard. Original line, c.1930. \$140
- 91**
An early wooden 4½" reel, with two bone handles, brass star back and foot, c.1900. \$100
- 92**
A J.W.Young & Sons 3½" Condex reel and matching line winder, anodised teal blue finish to both, c.1960. \$125
- 93**
A rare E.J.Brown 4½" salmon reel, copper anodised finish, the face with 18 drainage holes and two large ebonite handles, other construction of brass, c.1960. \$100
- 94**
A 3¾" trout reel by E.J.Brown for Steans & Co. Ltd., Christchurch, anodised copper finish, the face with ebonite handle, rim screw tension, both line guide and foot in fitted to reel pillar, c.1955. \$150
- 95**
A Hardys 3⅞" Perfect fly reel, Duplicated Mark II, c.1928, with ribbed brass foot, ivory handle and agate line guide, face plate rim line tension adjuster; with accompanying Hardys branded shaped and fitted leather case in good condition. See page 8. \$650
- 97**
A fine quality Ogden Smith landing net ('Reversa Net'), maker's details stamped to belt clip and aluminium head, with tapering bobbin turned wooden handle, c.1935. See page 8. \$180
- 98**
A 9¼" carved deer antler angler's priest, carved in the manner of Des Baker with a fish to one side, a dolphin the other and the distal end as the head of a tuatara. \$300
- 99**
An American leather-bound wicker fishing creel, c.1930. See page 8. \$125
- 100**
An early game bag, in canvas with leather lined interior and robust net pocket to the face, c.1920, 400 deep, 540 wide. See page 8. \$125
- 101**
Hardy Brothers; The Masters, The Men and Their Reels, 1873 - 1939, signed by the author John Drewett, limited edition book #121 of 125, deluxe large quarto leather-bound first edition in slipcase, includes a tipped in facsimile Hardy Brothers share certificate and retailers card as a bookmark. See page 13. \$1,000
- 102**
A Hardys 'Anglers' Guide and Catalogue', 63rd edition, 1945. \$90
- 103**
A green heart three-piece rod, made by/for J.R.Ross & Co., Napier, c.1900, with original bag. \$100
- 104**
A Walker Brampton two-piece split cane rod, for Sandersons of Turangi, in bag. \$200
- 105**
A Hardys 'Aydon' three-piece green-heart fly rod, made for W.H. Tisdalls Ltd., c.1925. With original bag. \$200
- 106**
A W.H.Tisdalls Ltd. two-piece split cane fly rod, 'The Brizle De Luxe', c.1925, in original bag. \$200
- 107**
A 'Joe Frost' (Turangi retailer and angler) rod, two-piece split cane with spare tip, c.1935, made for N.Z. conditions. \$200
- 108**
A W.H.Tisdalls two-piece split cane rod 'The Makuri', c.1940, in original bag. \$200
- 110**
A Hardys three-piece split cane 'N.Z. Tournament' salmon rod, c.1925, in bag with Tisdalls retailer's label. \$200
- 111**
A Hardys three-piece split cane salmon rod, with nickel silver and brass fittings, made for Tisdalls, c.1915, with original bag with 'rod-in-hand' logo. \$200
- 112**
A c.1950s Hasselblad 1000F film camera, 80mm Zeiss lens, original stitched leather outer case with embossed maker's details, together with Kaligar 150mm lens in grey stitched leather case, boxed Hasselblad filters, extension tube No. 40 and a magnifying viewer. See page 13. \$1,000
- 113**
A Schuco Radio 4012 wind-up tinplate car, manufactured in the US zone of Germany post World War II, the original red paint showing some distress, green plastic seat, lithographically printed - with maker's details, original key, working order, wind-up rear wheels,



2



3



5



10



11



12



13



14



15



18



22



23



16



24



28



29



37



42



45



48

turning front wheels and with hand brake, Thorens 'Radio' playing a song. Length 160. See page 13. \$240

114

A Schuco 1950s Combinato 4003 tin plate wind-up convertible toy car, the original red paint finish showing some distress, dark green seat, the two clock-work motors for the sounding horn and drive mechanism to the rear wheels, with moving speedo and hand brake. Length 190. See page 13. \$240

115

A vintage Schuco Studio 1050 1936 Mercedes Benz Grand Prix green racer, working order, complete with original workshop parts. Length 140. See page 13. \$240

116

Three vintage miniature plush Steiff toys, a 'Diggy' mole and two squirrels (one larger), tags to ears and cloth labels. Heights 100 to 170. \$100

117

Two vintage miniature plush Steiff toys, large giraffe, and small dog, giraffe with tag and remnants of label to ear. Heights 100 to 340. \$120

118

Three vintage miniature plush Steiff toys, walrus, elephant and 'Nosy' rhino, two with labels. Heights 80 to 140. \$100

119

Two vintage miniature plush Steiff toys, 'Peke' and 'Kitty'. Heights 160 and 200. \$120

120

Three vintage miniature plush Steiff toys, elephant, tortoise and penguin, labels to two. Heights 50 to 100. \$100

121

Three vintage miniature plush Steiff toys, mouse, squirrel and goose, labels to two. Heights 80 to 120. \$100

122

An old South-West Irish brass fiddle, the body of traditional violin shape with classical f-holes, original ebony finger board and tail-piece, one-piece wooden neck, peg box and scroll, some attention required. Length 560, held in later case. See page 13. \$700

123

An SML 'Strasser' clarinet in case, Paris made. See page 13. \$100

124

An Henri Selmer silver plated flute, Paris made, in case. \$100

125

A Boosey & Hawkes 'Regent' flute, silver plated. English made, in case. \$100

126

A Buffet Crampon Low Pitch clarinet in case, with Selmer mouthpiece. \$120

127

A Dolnet DLP clarinet, French made, in case. \$120

128

A Tribert French made clarinet, in

case, with Selmer mouthpiece and JTL bell. \$100

129

A 19thC Dolnet silver plated saxophone, French made, in case, serial no. 54551J. \$250

130

An antique cased violin, with two-piece back, with three accompanying bows. \$200

131

A vintage C.G. Conn Ltd silver plated soprano saxophone, in case, serial no. M184057. \$200

132

A Martin Coletti acoustic guitar, c.1940, in case, the back scratch engraved with owner's address, WWII enlistment details and engagement dates in the 1940s. Ex. the Michael Woolfe Collection. \$150

133

An 19thC walking stick, the bamboo shaft with curved handle terminating in a carved wooden dogs head, the head with glass eyes. \$250

134

A 19thC walking stick, the wooden shaft with curved handle terminating in a silver parrots head decorated with oak leaves, a woven silver wire band to the shaft. \$500

135

A 19thC walking stick, the briar shaft with a dog carved to the handle. \$320

136

A 19thC Malacca walking stick, the curved handle of silver decorated with roses and stamped 800. \$300

137

A 19thC hazelnut walking cane, the shaft terminating in an ivory handle with a decorative silver plate collar. \$300

138

A palmwood walking stick, with handle carved as an upturned boot. \$120

139

E. Hope sculpted bronze figure group, two young children upon the back of a ram, one holding its horns, incised detail. Provenance: Purchased in Vietnam, the work of an Australian artist. Length 255. \$250

140

A 19thC enamel on copper plaque, depicting the 'Mocking of Christ', in an ornate gilt frame. Overall 225 x 190. \$800

141

A Victorian cast iron 'Chicago Bank' money bank. Width 145. \$150

142

A spelter statuette of an elephant, modelled standing. Length 365. \$125

143

A replica bronze statuette of a Marly horse and trainer, old repairs to hind legs. Height 230. \$120

144

A bronze float bowl, with sculptural birds perched on the inverted rim, seal marks under the base. Diameter 410. \$500

145

A pair of Gérard Bouvier sculptures, one of a rooster, the other a hen, made from silver plate cutlery, with copper combs and tail feathers. Signed and dated. See page 13. \$250

146

An antique French Vernis Martin billet doux, designed to contain love letters (billet doux - sweet note), the exterior decorated with hunting dogs and birds, opens to reveal a tortoise shell tube, length 125. (Vernis Martin is a type of Japanning or imitation lacquer). See page 13. \$250

147

A small late 19thC French metal casket, the exterior with deep relief decoration of village scenes, gilded borders, marked T. & E. Paris. See page 13. \$200

148

A Canton silk shawl, worked in ivory coloured thread on a black ground with peony blossoms, flowers and insects, bordered by an intricately knotted broad fringe in conforming ivory silk. \$250

149

A small white marble bust of a 1920s girl on a hexagonal alabaster plinth base, signed. Height 180. \$400

149A

A 19thC Royalty interest cowrie shell, cameo cut and engraved with the bust in profile of the Duke of Edinburgh commemorating his landing in Sydney in 1868. Length 88. \$160

150

Three kauri pieces, semi-polished in gold and brown tones, some crazing. Total weight 835gms. Length 100-150. \$180

151

A kauri gum piece, semi-polished and in golden honey tones. Weight 474gms. Length 160. \$150

152

Three kauri gum pieces, semi-polished in honey tones. Total weight 435gms. Length 120-140. \$100

153

Four kauri gum pieces, polished, various shapes, in bright crackled honey tones. 550gms. Length 90-120. \$150

154

A kauri gum nugget, pecked and lighted polished. 745gms. \$220

155

A small kauri gum boulder, in unpolished natural condition, 875gms. \$200

156

A polished kauri gum nugget, dark tone, smooth overall polish. 600gms. \$120

157

A piece of kauri gum, one side pol-

ished, the other in natural state.
1.5kgs. \$250

158

Two pieces of kauri gum, in its natural state. 1.2kgs. \$120

159

A piece of kauri gum, reconstituted form. 1kg. \$120

160

A piece of kauri gum, semi-translucent, one side polished. 600gms. \$120

161

A large kauri gum boulder, semi-translucent, one side polished, the other in rough natural state. 6.4kgs. See page 13. \$800

162

Four pieces of kauri gum, polished and gold translucence. 600gms. \$150

163

An old small whalebone vertebrae. Width 305. \$90

164

An old whalebone vertebra, deep disc form with no protrusions, some cut marks evident. Diameter approx. 260, depth 160. \$120

165

An antique tiger skin rug, with head, on a scalloped satin-type backing, glass eyes, mouth open and roaring, some wear. 2800 from tail to head, 1440 from paw to paw. See page 13. \$1,000

166

A turtle shell, 13 plates displaying rich butterscotch to dark brown mottling. Length 680. See page 13. \$225

167

A marmot skin and head, mounted on green felt backing. Length 790. \$120

168

A fossilised dinosaur egg, with dark surface and filled with a fine sedimentary stone. Width 140. \$400

169

A vintage zebra skin, some distress, mounted on black felt ground. \$400

170

Five specimen butterflies, variously mounted and framed. \$100

171

A collection of 16 specimen insects, each encased in acrylic blocks. \$160

172

A vintage lion skin rug with full mounted head, lioness with open mouth and glass eyes. \$1,200

173

A Victorian ivory letter knife, the handle beautifully carved with flowers. Length 260. \$100

174

A set of trophy kudu horns on shield mount. \$500

175

A 19thC ivory tusk section page turner, the tip forming the handle, patina of age. Length 390. \$200

176

A pair of Indian brass dishes on pedestal bases, boat shape, with handles formed as figures astride serpent forming handles. Width 220. \$125

177

An early 20thC Arab jambiya dagger with scabbard, with 20cm curved double-edged blade, horn hilt, brass chased panel covered scabbard and belt with braided silver thread. Distressed. \$150

178

A graduated set of five 19thC Irish haystack pewter measures, by Joseph Austin & Son, Cork. \$250

179

Three pewter vessels and a book, 'British Pewter', a lidded tankard and a pint mug with spout conversion. \$120

180

Two 19thC pewter plates, with touch marks for Nathaniel Barber, London. Diameter 235. \$100

181

A pewter quart tankard, converted with a spout to form a jug, owner's details engraved to side. Height 160. \$100

182

An early 20thC European zinc and oak crucifix. Height 770. \$250

183

A small oak wall cabinet, one top shelf and two small cupboard doors, with highly ornate carved decoration to the exterior. 420 x 180 x 490. \$150

184

A kauri apprentice chest, two half drawers over three full width drawers, small decorative corbels, on bun feet. 450 x 330 x 440. \$280

185

A Victorian walnut writing slope, brass capped and bound, the interior with red velvet writing surface. 405 x 240 x 150. \$150

186

A Victorian coromandel wood writing slope, with bands of ornate mother-of-pearl inlay and vacant cartouche to the lid, the interior with blue velvet writing surface and original glass ink bottles. 345 x 235 x 140. \$175

187

An Edwardian brass based kerosene table lamp, the squat circular reservoir raised on a square section column from a spreading base, fitted with a Messenger's Patent burner with etched glass shade and chimney. Overall height 640. \$220

188

A 19thC brass helmet coal scuttle, with swing handle, copper riveted detail. \$200

189

A 19thC rare and complete set of S. Mawson & Thompson of London obstetric instruments in velvet lined leather

bag, the steel instruments, many with ebony handles, include four pairs of various forceps, a Smelie perforator and a balene and ivory handled uterine Sound, all fitted to the stitched black leather and purple velvet lined unfolding bag, gold tooled maker's mark. This set would accompany the physician to the home for delivery. See page 13. \$850

190

A vintage African carved heavy ebony sculpture as a column of 18 figures. Height 960. \$350

191

A 19thC steeple chase engraving 'Punchestown Conyngham cup 1872. The Stone Wall', after the painting by Sturgess, engraved by E.G.Hester. 545 x 855. \$250

192

A c.1654 map of the British Isles entitled 'Insulae Albion et Hibernia cum Minoribus Adjacentibus' by Johanes Blaeu. Original outline colouring. Dutch. 475 x 600. \$350

193

A pair of C.F. Goldie books by Alister Taylor, published 1977, 'His Life & Painting' and 'Prints, Drawings & Criticism', both in original Solander cases, Ltd. Ed. \$600

194

'Notable New Zealand Thoroughbreds', published by Alister Taylor. \$100

195

'Tapestry of Turf' Moa Publications, limited edition, in Solander case. \$100

196

'Notable Australian Thoroughbreds', published by Alister Taylor. \$100

197

A 1920s cigarette card album including approximately 50 cards of 1920s All Blacks. \$175

— FOSTERS MARITIME —
COLLECTION

198

An old 8ft clinker built dinghy, painted grey and green, with later cradle stand. Used by Fosters to display and promote the retail shop specials. Not seaworthy.

Provenance: This and the following maritime lots are from the Fosters Ship Chandlery collection, they formed part of the "mini museum" giving the business a uniquely old-fashioned ambience. Fosters Ship Chandlery of Fanshawe Street Auckland was established by Alex Foster back in 1907 and from the 1950's saw three generations of the Street family as owners and operators. Its closure brings an end to a landmark waterfront business operating from the same premises for over 100 years. Having served the maritime industry of Auckland and



50



59



60



70



55



74



71



72



82



75



78



81



97



84



87



88



95



99



100

further afield their closure brings an end to an era. \$600

199

A vintage large model of a tug boat, green and red painted hull, finely detailed with rigging, brass trim, lifeboats, etc. Length 1000. See page 13. \$850

200

A c.1940 scratch built model racing yacht 'Secret', blue and white painted hull, chromed keel with weighted base, long bowsprit and tall mast with rigging, on kauri stand. Was raced Orakei Basin. Old label associated 'length 2' 6"', keel weight 6½lbs. Owner: Stead Ellis'. Together with a vintage hand coloured black and white photo of 'Secret' racing, silver plate trophy cup engraved 'Wilson Cup 1944-45 Won by S. Ellis "Secret" ' and a trophy shield with silver plaque engraved 'Martin Shield O.B.M.Y.C. Junior Points S. Ellis 1945-46'. See page 13. \$700

201

A Victorian copper and brass Thomas Grieve & Son 'Masthead' lamp, stamped maker's details and applied brass plaques, riveted detail. See page 16. \$450

202

An old brass ship's lamp, original kerosene fitting to interior, enamelled back panel, three dimpled glass panels to the front, stamped marks including the date '1915' and 'Bullpitt & Sons, Birmingham'. Height 400. \$260

203

An early 20thC Davy & Co. of London ship's 'ANCHOR' lamp, copper with brass fittings including two swing handles. Height 520. See page 16. \$400

204

Two vintage Davey & Co. of London brass ship's lamps, graduating size, original kerosene internal fittings. Heights 425 and 350. \$300

205

A vintage Davey & Co. of London ship's lamp, square section, copper with four glass panels, one with cracked corner, brass protection bars and fittings. Original kerosene internal fitting. Height 450. \$220

206

An early 20thC copper ship's search lamp, brass cradle, handles and base fitting, no internal lamp. Diameter 430, height overall 755. See page 16. \$500

207

A brass ship's interior lamp, kerosene with double wick, chimney and white globe. Height 440, wall mounted. \$120

208

An early 20thC ship's telegraph and control by Chadburn & Son of Liverpool and London brass housings and handles, other steel fittings, with cables, the telegraph pedestal painted

grey. Height of telegraph 1130. See page 16. \$1,200

209

A vintage Kelvin & Hughes Ltd of England brass cased ship's binnacle compass, the brass cover with hinged oval plate revealing a glazed panel for viewing the gimballed compass, maker's details to the compass plate including 'Type No. 72958', raised on a mahogany stand with brass fittings. Provenance: Imported by Mason Bros. for Stewart Island ferry "Wairua" but purchase fell through'. Then used as display at Fosters. See page 16. \$1,800

210

A vintage brass ship's porthole window, opening by the release of two circular screw nut fittings, nine fastening holes. Diameter 515. \$350

211

A 19thC ebony octant by D. McGregor of Glasgow and Greenock, brass fittings, ivory scale, original case, some attention required. \$800

212

A c.1953 Heath & Co. London 'Hezzanith' sextant, ebonised frame with brass detail and silver scale, original teak box with 'National Physical Laboratory, Teddington' certification. \$650

213

A small bronze starter's canon, the top with cartouche in relief framing the monogram 'HF', wooden cradle. Length of canon 275. \$160

214

An old ship's brass pump (Bilge), cylindrical form, rosewood handle, mildly domed cap suction end with multiple piercing. Length unextended 620. \$110

215

An early 20thC ship's 'Baby Blake' marine toilet, chromed fittings, the porcelain bowl with maker's details 'Blake & Son, Victor, 88 South Street, Gosport. \$350

216

An old wooden ship's double pulley, steel fittings, oak construction. Length 540. \$110

217

Two oak and brass ship's pulleys, one double wheel, the other single, inset brass maker's plate with capacity details. \$250

218

An old ship's oak double pulley, large steel ring to the top, copper plaque to the side. Length 450. \$120

219

A vintage ship's wood framed double pulley, rope bound with galvanised steel large eye. Length 500, some borer. \$120

220

An old ship's wooden pulley, iron fitting, brass plaque with capacity detailed, length of hemp rope attached. \$150

221

An old mahogany ship's double pulley, iron fittings attached, copper side plaque. \$140

222

An old ship's wood and galvanised steel double pulley, link of heavy hemp rope attached. \$160

223

An old ship's teak eight spoke wheel from the "Rahiri", brass inlaid band. Diameter 1180. The Rahiri was the last working scow in Auckland, was owned and skippered by Jock McKinnon. \$400

224

An old galvanised iron ship's Herreshoff anchor with wedge securing the top arm, length of chain attached. Length of anchor 920. \$120

MILITARIA

225

A Victorian silver Gurkha hat badge, for the 'Third Gurkha Rifle Regt.', the cross within wreath form crested with a crown. Hallmarked Birmingham 1897 by Bent & Parker, noted military ornament makers. 90 x 72. See page 16. \$160

226

A 19thC English pepper pot pistol, the six shot revolving barrel of 2 1/2 " length with English proof marks, the overhead steel hammer holding the percussion caps, scroll engraved detail, mahogany grips. The mechanism working. No licence required. See page 16. \$1,400

227

A German WWI 37mm round, marked 'Patronenfabrik Karlsruhe' and dated 1915. Height 170. \$100

228

Three late 19th-early 20thC military leather cartridge pouches, one marked 'W.H.Travis & Co. ChCh, Saddlers' and enclosing remnants of WWI medal ribbons. \$200

229

A leather WWI flare pistol holster, strap broken and absent. \$100

ARTEFACTS, TRIBAL &

NZ HISTORICAL

230

A 19thC large Fijian tabua, the sperm whale tooth with old toned patina suspended from a thick section plaited fibre cord. Tooth length 185. See page 16. \$850

231

An early 20thC Samoan paddle shaped club, blackened surface, engraved all over with notched and incised pattern, blade edge faulted. Length 1010. \$120

232

Three Papua New Guinean tridacna

shell currency rings (yua), the disks of various sizes mounted in contemporary black metal display stands. Largest diameter 215. \$350

233

A Pacific Island slit gong, along with a slender drum stick (terminal broken). Length 505. \$125

234

A Solomon Islands canoe paddle, with leaf shaped blade, plain shaft terminating in carved finial with cross-bar handle (small loss to cross-bar). Length 1160. \$140

235

A contemporary artistic collar of shells and feathers, fixed to a plaited string foundation, displayed on a fine wire stand. Height 650. \$160

236

A large old Tanzanian carved gourd, decorated with birds and animals framed by geometric incised panels. Height 320. \$125

238

A Maori contemporary carved kōauau flute, with three finger holes outlined with paua shell. Length 160. \$300

239

A naïve folk art carved Maori wahaika, in the manner of Capt. Gilbert Small, the blade with tiki heads and figure, the butt as a koruru head with paua eyes. Length 440. \$250

240

Two toki-pou-tangata, one set with a pounamu blade, the other with a simulated nephrite blade, the shafts and heads decorated with overall incised designs. Height 460. \$250

241

A Maori carved figure, resembling a pou tokomanawa. Height 315. \$150

242

A contemporary Maori carved whale bone breast pendant, resembling a rei puta, carved and pierced with spiral and masks. Length 270. \$220

243

A Maori carved whale tooth pendant, resembling a rei puta, carved with notch and whirl designs above a mask terminal. Length 80. \$125

244

A Maori carved pig tusk breast pendant, the two tusks carved with manaia figures inset with paua eyes. Width 125. \$125

245

New Zealand timber Maori carved bookends, the fixed base fitted with uprights carved with wheku heads with inlaid paua shell eyes, c.1950s. Width 560. \$400

246

An impressive mid-20thC large carved Maori stylised figure panel, patu to right hand, a stylised child figure to the base, paua insert highlights. 1775 x 545 x 40. See page 16. \$2,500

247

A large Maori carved wheku mask, with paua ring eyes, open mouth with protruding bifurcated tongue, the arched brow surmounted by two profile wheku heads. Rotorua area c.1950s. Height 750. See page 16. \$750

248

A Maori carved panel, carved as two masks, a wheku head above a koruru head, both with paua inlaid ring eyes. Rotorua area c.1950s. Height 755. See page 16. \$750

249

A copy of the Tangonge Kuwaha (Tangonge Gateway), the original 14th-16thC carving discovered in 1920 when Lake Tangonge, near Kaitaia was drained. Width 2200. \$950

250

A large and impressive colonial kauri gum bust, in the form of a Maori mother and child on a wooden base. Cracking commensurate with age. Approx. 30kgs. 500 x 600. See page 16. \$5000

251

A large kauri timber burl, the curved form reflecting its removal from the tree-trunk. Height 500. \$300

252

The pelvis and leg bones of a moa, in fair to good condition with minimal losses or erosion. See page 16. \$400

253

A Burton Bros. vintage photograph, of a Maori family at Wairoa seated before a raupo whare. 200 x 285. \$100

254

Three framed vintage photographs, 'Guide Bella Papakura and tourists at Whaka' [Stewart], 'Hongi's Track' and horsemen outside a hotel. \$240

255

Three framed vintage photographs [Marsh], of tourists (including WWI soldiers) on wagons/carriages at Tikitapu and Wairoa, all hand coloured. \$240

256

George Chance, 'Otago Boys' High School' photograph, signed and entitled. 150 x 210. \$100

257

Three framed vintage photographs, of tourists on wagons at Tikitapu [Marsh] and cavalcade of soldiers on wagons [E.A.Phillips]. \$240

258

A vintage black and white photograph of the 'Auckland Rugby Representatives Touring Team 1926', the mount entitled and detailed with players' names etc. 190 x 270. \$240

259

A vintage black and white photograph of the 'Combined Group of American Universities Rugby Team, New South Wales Representative Team, New Zealand Representative Team, New Zealand Native Team...', the mount entitled

and detailed 'Photographed in Sydney, 1910' etc. 265 x 395. \$1,200

260

A vintage black and white photograph of the 'Auckland Rugby Union Representatives 1932', the mount detailed with photographer S.P. Andrew Studio, Auckland, entitled and detailed with players' names etc. 155 x 245. \$240

261

A vintage black and white photographic image of the 'N.Z. All Blacks, 1901', the mount with entitlement and players' names. 265 x 365. Note: The use of the name All Blacks did not officially begin until 1905. \$650

262

A vintage black and white photographic image of the 'Auckland Representative Team 1912', the mount entitled and detailed with players' names. 175 x 245. \$240

263

Three vintage Tainui Maori historical photographs and piupiu, includes; a vintage photo of an honorary degree detailed 'The changing role of the leader in Maori Society, a study in social change and race relations', another image of the wedding couple 'HIKAKA WIMAKI-MERIANA KARAIPU' and another of an interior scene including model waka before a carved panel detailed 'HMS Monowai' with photo of Churchill above. \$150

264

Five photos of historic Tainui Maori figures and a watercolour of Ngatangua Harbour Rarotonga, the photos including a formal study of 12 figures before a carved Maori building, a photo of the young 'Pare Waikato Kahukuranui', Te Puea Herangi with four important naval figures within a Maori interior, a reprint photo of a large gathering for a Maori concert, some members detailed in ink and the harbour scene watercolour of 'Ngatangua Harbour Rarotonga, Cook Islands scene of the departure of the Canoes for New Zealand about 1350. For Princess Te Puea Herangi...' detailed on reverse and dated 1950. \$250

265

Four framed Maori portrait and figure study photographs, includes four portrait studies of Maori men in military uniform, a formal study of 12 people, detailed on reverse with names of each 'Alfred Arama William (daddy), Jimmy, Joe, Percy...', another of a young child seated before a Maori carving, entitled in ink to reverse 'PIRIHIA' and a small photo of a gent entitled on reverse 'Kapa'. \$200

266

Five vintage black and white photos of Tainui celebrations, group shots including Te Puea and other important figures. \$200

267

Two vintage portrait photos of 'Te Puea and Rewi', black and white hand coloured, one detailed to the reverse and dated 19th May 1937. 270 x 220 approx. \$150

268

A 1940 silver plate presentation tu-reen engraved 'Presented to Princess Te Puea Herangi C.B.E.', Red Cross enamelled emblem, further engraved 'at Waahi Pa on 8th October 1940 By Major A.E. Gibbons...'. \$150

269

Four framed photos pertaining to Princess Te Puea Herangi, includes; a formal study of 12 individuals including Princess Te Puea Herangi, together with Field Marshal Montgomery and other important Maori figures before a Maori carved building, a vintage coloured photo reprint of Princess Te Puea wearing her CBE medal awarded c1938 and a vintage reprint photo of four Maori women seated before a wall of portrait photos. \$200

270

A historic Tainui vintage Maori painted silk 'Prince of the Waikato', the central architectural form in Maori designs framing a Maori crest entitled to the base 'TE-PAKI-O-MATARIKI', with other significant emblems, date 1912 and five further small windows with red florals. 385 x 485, in oak frame under glass. \$400

271

An old 'Auckland Key to Block Plans' folio of street maps in folder form as used by the fire brigade, printed detail including 'Council of Fire & Accident Underwriters Associations of N.Z. in December 1928. Superseding Previous Issue'. 380 x 500. See page 16. \$250

272

Six 1920s/1930s high school sporting achievement caps, school monograms embroidered together with trim and some dates, 1929 and 1934. Various colours. \$150

273

A good New Zealand inlaid woods box, rectangular form with banded and panelled inlay including burr totara, rewarewa and paua, blue silk lining. In the manner of William Norrie. 260 x 180 x 95. See page 16. \$600

274

Historical items belonging to Captain Ernest E.M. Joyce together with an autograph album containing Shackleton's and other signatures from the 1907-09 British Antarctic Expedition. Includes 1. A silver cigarette case presentation engraved 'Presented to Capt. Mills Joyce By The Executive of the G.W.V.A of Newfoundland in Appreciation of Services on behalf of The Relief Fund. August 1926'. 2. A 9ct gold fob engraved 'E.E.Joyce 17-5-13', from

'United Commercial Travellers Assn. of Australasia'. 3. A Curlett family member autograph album containing eight signatures of members of the 1907-09 British Antarctic Expedition (Nimrod Expedition) including Ernest Joyce, Ernest Shackleton, George Marston, Ray Priestley, John Davis, Frank Wild, Alistair Forbes Mackay and Jameson Boyd Adams, on the opposing page is a poem written in ink by Ernest Shackleton entitled 'Erebus', 'Keeper of the Southern Gapway, rugged and grime & grand, warden of these...' initialled E.H.S. Note: Erebus was first climbed on Shackleton's 1907-09 expedition, two of those who reached the summit signatures on opposing page. 4. A photo archive including; A vintage silver gelatine photo of Joyce with named dogs, two photo postcards of sled dogs inscribed verso '... from Aunt Bee Mills Joyce', five reprint photos of 'Miss B Curlett, lady and dog' and accompanying letter noting an article stating Joyce 'gave it (the dog) to Beatrice in Christchurch shortly after the Expedition thus 'cementing their Romance'. 5. A signed 1st ed. copy of the book 'The South Polar Trail' by Ernest Joyce 1929 inscribed 'My Dear Nephew John from Uncle Joyce...1929'. 6. Other articles, books, newspaper cuttings and correspondence. Provenance: by descent through the Curlett family; Miss B. Curlett married Joyce in 1917. See front cover and page 16. \$3,000 - \$4,500

275

An impressive large New Zealand greenstone nephrite boulder, river worn finish, a single cut end showing dark mottled tone. 500 x 580 x 230. Approx. 130kgs. See page 21. \$5,000

276

Dame Malvina Major's sheet music collection "My Collection 70 Years", comprising twenty boxes of sheet music used by Dame Malvina during her long and illustrious career, including the very first piece, many with her handwritten annotations. See document attached on Cordys website from Dame Malvina detailing this collection and its history or at viewing. See page 21. \$1,000

277

A vintage Feltex 'Mt Cook' sample picture rug, this different sample version labelled to the reverse 'this is a sample only and some dye variations may occur between sample and production runs'. Other details noted. Provenance: From the collection of an ex. Feltex employee. 1360 x 690. \$550

278

A pair of silver paua and threepence spoons, the bowl formed from 1952/1959 threepences, the handles with paua inserts, STG SIL to reverse. \$100

N.Z.STUDIO ART

279

Two Crown Lynn (Ernest Shufflebotham) Hand Potted vases, white shape 47 and pink glazed, heights 130. \$180

280

A Crown Lynn (Ernest Shufflebotham) Hand Potted vase, white glazed shape 13. Height 130. \$120

281

A Crown Lynn lemon yellow McAlpine refrigerator jug, ribbed tall rectangular section form with 'McAlpine' in relief to each side. Height 225. \$225

282

A Crown Lynn lime green McAlpine refrigerator jug, ribbed tall rectangular section form with 'McAlpine' in relief to each side. Height 225. \$225

283

A Crown Lynn (Ernest Shufflebotham) Hand Potted medium vase, white glazed, ribbed spherical shape 14. Height 180. \$200

284

A Crown Lynn (Arthur Rhodes) vase, ovoid shape, with glazed and unglazed stuttered collar. Height 240. \$150

285

A rare Crown Lynn medium sized white glazed swan, beak touching neck, moulded number in relief to base '2147'. Height 155. See page 21. \$450

286

A pair of rare early Crown Lynn black glazed polar bear bookends, gloss finish. Height 105. See page 21. \$750

287

Crown Lynn hand potted small vase, shape #14, incised number and printed mark. Height 125. \$140

288

A Crown Lynn pottery vase designed by Arthur Rhodes, a dark glaze to the waisted neck, the banded textured body with clear glaze, printed tiki mark. Height 165. \$120

289

Mirek Smisek shino glazed flared bowl, incised sculpted rim, pedestal foot. Diameter 255. \$140

290

A Margaret Milne tall stoneware vase, textured matt surface with umber finish, the organic top narrowing to an oval. Height 560. \$180

291

A large Peter Collis branch pot, squat circular shape with short neck with everted mouth, decorated with gestural floral panels reserved on a blue-grey ground. Diameter 420. \$250

292

A large Don Thornley branch pot, swollen rectangular form with rolled neck, feldspar glaze, impressed potter's mark. Height 390. \$225

293

Graeme Storm stoneware pottery

lidded jug, strap handle, dark brown tenmoko type glaze, impressed mark. Height 205. \$120

294

Anneke Borren c.1970 dog sculpture, modernist European styling, painted potter's mark under chin. Length 200. \$200

295

A Barry Brickell shallow bowl, decorated with tenmoko gestural design to the centre, stuttered pattern to the exterior as a band near the foot ring. Diameter 270. \$150

296

A large Barry Brickell garden pot, with thumb-print pattern forming a border beneath the rolled rim. Diameter 325, height 300. \$225

GLASS

297

A vintage German mercury glass perfume bottle, internally decorated with blue and silver swirling, silver mercury glass stopper. Length 65. \$100

298

A mid-century French Vannes crystal elongated flared bowl, heavy sculpted angular base, acid etched mark. Length 675. \$180

299

Three glass liqueur flasks, flattened baluster shape in purple, blue and amber glass, with various metal mounts and covers. Height 210. \$120

300

A Victorian green glass dump, traditional tall rounded form with included bubbles, snap-off pontil evident to base. Height 125. See page 21. \$180

301

A Victorian green glass dump, a flower pot display included, ground pontil evident to base. Height 123. See page 21. \$200

302

Eleven Waterford crystal wine glasses, in the Clodagh pattern. \$450

303

Rosenthal modernist art glass vase, gold speckled stripes within red encased in clear. Height 325. \$250

304

A Kosta crystal vase, hexagonal ovoid form on round base, signed and dated 1939, with original 1940 receipt. 'Imported for the 1840-1940 Christchurch Exhibition' written on the back of receipt. Height 320. \$250

305

A Swedish crystal lidded box, chamfered corners and shaped top. 'Imported for the 1840-1940 Christchurch Exhibition' written on the back of receipt. 165 x 110 x 115. \$180

306

A Kosta crystal vase, ovoid form with

slalom fluting to the exterior, signed and dated 1937, with original receipt. 'Imported for the 1840 - 1940 Christchurch Exhibition' written on the back of receipt. Height 250. \$350

307

Four Jasper Conran for Waterford large wine glasses, two 'Strata' goblets and two 'Aura' wine glasses, in two original boxes. \$150

308

A Waterford crystal water jug, in the Lismore pattern. Height 140. \$130

MODERN MOVEMENT

309

An Art Deco style figurine by Demetri Chiparus, 'The Squall', bronze patinated resin, triangular form striated marble base. Minor damage to dress fringe. Height 345. \$220

310

Two Carlton Ware Rouge Royale items, the jug with dragonfly, water lilies and wreaths enamelled in colours and gilded, the Art Deco flared vase with conforming florals and spider web. Heights 150 and 130. \$110

311

A graduated pair of Carlton Ware Rouge Royale Chinese pagoda decorated jugs, ornate gilt enrichments. Heights 180 and 150. \$120

312

A Carlton Ware 'Handcraft' Chevron pattern vase, silver geometric overlay to the green and black glaze. Printed and painted marks. Height 75. See page 21. \$110

313

A Clarice Cliff large Isis vase in the orange Bridgewater pattern, c.1933. The encircling band of decoration showing the pattern in full including the essential Clarice Cliff decorative motifs; bridge, tree, house and flowers. Printed 'Bizarre' mark to the base. Height 285. See front cover and page 21. \$1,200

314

René Lalique 'Pinsons' blue stained bowl c.1933, the birds repeating in various pose in curving serrated leaf frames, the blue staining to the recesses, acid etched mark. Diameter 236. See front cover and page 21. \$2,000

315

A rare Martin Bros. pottery lidded jar, the tall tapered square form base with a blue dominant salt glaze, vertical incised wavy detail, the heavily constructed domed lid with cylindrical section inserting into the base, the lid and base with incised maker's detail, the base 'Martin ware Southall. GB. 21.37'. Hair crack to base top rim. See page 21. \$850

CHINA & PORCELAIN

316

Two antique porcelain small round boxes, one jewelled with seed pearls, painted with fine floral swags and gilt enrichments, both with gilt mounts. \$200

317

A Copeland and Garrett ashette, 'Castle' or 'Gate of Sebastian' pattern, c.1833-47, and two Spode dishes in the same pattern. \$100.

318

A late 18thC English porcelain mug, of good size, finely painted with floral sprays, gilt highlights, chip and hair crack to rim. Height 140, diameter 108. \$150

319

A pair of late 19thC Coalport vases, blue and white with dominant gilt background highlights, printed maker's mark. Heights 100. \$110

320

A Victorian Staffordshire two handled loving cup, the exterior moulded with game birds and dogs, the interior with a surprise frog. Height 140. \$100

321

A Staffordshire figure of a resting Scottish soldier, remnants of gilding, partial glazing, old firing flaws. Height 275. \$110

322

A large Walter Moorcroft Orchid and Spring Flowers pattern vase, on a dark cobalt blue ground, tapered body, short everted neck, impressed marks and painted initials in blue. Height 310. See page 21. \$1,200

323

A William Moorcroft vase, Leaf and Berry pattern, trumpet shape, impressed factory marks and brushpoint initials. Height 210. See page 21. \$225

324

Walter Moorcroft anemone decorated vase, baluster form. Impressed marks and painted initials in blue. Height 155. See page 21. \$350

325

Three Turner's blue and white dishes, and two Ironstone plates, one marked Mason's. \$100

326

A Royal Doulton cabinet vase painted by J.H. Plant, with a rural house, garden and figures, cylindrical shape with two gilt handles. Signed. Height 215. \$150

327

A Doulton Burslem tall painted by Charles Hart, (act.1880 - 1927), decorated with flowers on a pale ground highlighted with gilt. Height 350. \$600

328

A Royal Doulton plate painted by Dewsberry, with cattleya orchids. Diameter 240. \$400



101



112



113



115



114



145



146



122



123



147



189



199



166



165



161



200

329

A pair of Nymphenburg porcelain vases, trumpet shape, finely hand painted with tulips and floral sprigs. Height 200. \$200

330

A vintage majolica holy water font, decorated with the Madonna and Child, beneath a cross with flowers, angel head and wings. 100 x 210. \$120

331

A European provincial two handled storage jar with emerald green glazed shoulder, some losses. Height 335. \$120

332

A European porcelain tray and jewelry box, blue glaze decorated with leafy tendrils in white, the tray raised on a gilt metal base with mask and claw feet. Tray width 295. \$150

333

A large and impressive Delft vase, decorated with traditional Dutch scenes surrounded by florals, full mark to base and in box. 270 x 430. \$350

334

A large Royal Dux bone china figure of a young man accompanied by a goat, he wears a green robe shot with gold and a bear skin across his shoulder. Height 520. \$500

335

A Royal Dux bone china figure of a woman with sheep, glazed in pastel tones and light gilding. Height 510. \$500

336

A Wemyss honey pot, decorated with bees flying around a bee skep and on the lid. Height 130. See page 21. \$220

337

An 18thC Derby wrythen fluted cup and saucer and Worcester fruit plate, the plate with armorial crest and motto within a turquoise border, the cup and saucer with gilt sprigs within cobalt border. \$140

338

A tall Royal Worcester two-handed vase, shape 2192, painted with a medallion of fruit by Frederick Chiver within a puce border. Height 260. \$700

339

A tall Royal Worcester vase, shape 2033, ovoid with two handles issuing from the shoulder, trumpet neck engraved on a conforming stem from a circular spreading foot. Painted with chrysanthemums on a blush ivory ground. Height 425. \$900

340

A pair of Royal Worcester small vases, painted with fruit by G. de Lane, shape G161. Diameter 80. \$300

341

A Royal Worcester porcelain plaque, hand painted by T. Nutt, with apples and blackberries, in oak frame. 100 x 150. \$200

342

A Royal Worcester plate hand painted

with game birds and signed Jas. Stinton, printed mark for 1897. Diameter 233. \$350

ORIENTAL

343

A cast bronze tortoise, a Buddha in relief to its back, old calligraphy script to the plastron (under plate). Length 125. \$110

344

A Malay Chinese antique money changer's box, rectangular shape with brass capping and binding, brass handles to the sides, the lid opening to reveal compartments for documents, writing instruments and inks, a lift-out section giving access to a secure cavity. 475 x 310 x 160. \$250

345

A pair of 19thC Chinese carved bamboo brush pots with English silver mounts, carved with multiple figures within walled gardens and buildings, the shaped silver top rims and scrolling bamboo form handles hallmarked London 1879 by Rupert Favell. Diameter approx. 155, height 173. \$600 - \$800

346

A large Chinese octagonal shaped porcelain bowl with a circular well, painted with an extensive landscape with depictions of vessels on a lake, craggy rocks and ancient pine trees along with pavilions and figures in enamels. The entire scene framed by a lappet border, the everted rim decorated with eight Taoist Precious Objects. The reverse decorated with sprigs of peaches, pomegranate and lychee. Blue six-character Qing Dynasty, Qianlong reign mark to the back. Diameter 430. \$1,000

347

An old Chinese large crackle glaze vase, baluster form, blue painted underglaze decoration of a deer and stalk within a landscape dominated by a fir tree, red glaze highlights, minor detail in relief, four-character marks to base. Height 430, small professional repair to top rim, raised on turned hardwood stand. See page 21. \$1,500

348

A vintage large Chinese carved hardwood figure of Shao Lao, with scroll, deer and stork, fine silver wire inlays. 7.5kgs. Height 625. See page 21. \$2,000

349

A pair of old carved ivory Chinese temple lion dogs, male and female, the female with left forepaw resting upon a pup, the other with paw upon a brocade ball. Each raised on a carved dark wood stand. Remnants of gilding and red pigment. Height 125. See page 21. \$2,400

350

An exceptional exhibition quality large Chinese carved ivory figure group, the

six child figures practicing various martial arts within an outdoor setting including rocky outcrop, fenced garden, trees, weeping willows and blossoms with carved ivory base. 555 x 300 x 260, all upon a conforming shaped rosewood base with fine carved and fretwork detail, highlighted with fine silver wire inlay. Provenance: This large group was brought to New Zealand from China and exhibited in an international exhibition, c.1970. Our vendors had connection with the Chinese delegation and purchased at the exhibition close. See page 21. \$6,500

351

A quality large carved ivory figure group of four Chinese child skaters, various poses with arms outstretched, upon an ivory oval base supported within a carved wood stand. 290 x 175 x 185. See page 21. \$1,200

352

A pair of moon flask vases, the circular bodies decorated with panels depicting women in gardens, the tall necks flanked by lizard handles, the background in unusual black enamel decorated with scattered rosettes and gilded scrolls. Multiple character marks under the base. One faulted. Height 450. \$800

353

An early 17thC Chinese blue and white porcelain dish, from the Binh Thuan Shipwreck Collection, recovered 2001 from the Dutch East Indiaman 'Witte Leeuw'. Diameter 275. \$600

354

An unusual Chinese porcelain vase, of unusual eight-sided panelled shape, decorated in underglaze blue with flowers and trees and with calligraphy to the reverse. Raised on a conforming wooden stand. Height 330. See page 24. \$250

355

An old Chinese blue and white ginger jar, blossom decorated on blue mottled ground, conforming cover, double blue encircling ring to the base. Height 215. Provenance: purchased David Cooke Antiques, Auckland 1978. See page 24. \$350

356

A Chinese blue and white dish, circular, the interior painted with six figures within a walled garden. Diameter 293. \$260

357

A Chinese blue and white export plate, two figures within a walled garden, the exterior decorative border including butterflies. Diameter 228. \$180

358

A Chinese quality blue and white decorated bowl, the interior with dragon to the well, coin motifs to the interior rim, the exterior with multiple figures, underglaze blue mark to base, some chipping to rim. Diameter 202. \$250

- 359**
A small Chinese blue and white small bowl, pedestal foot, hair crack to rim. Diameter 62. \$90
- 360**
A Chinese porcelain blue and white kendi, decorated with figures of children in a fenced garden and floral designs. Height 200. \$600
- 361**
An old Chinese blue and white tile mounted in blackwood frame, damaged and restuck. Overall 420 x 315. \$125
- 362**
A large Chinese platter, decorated with Chinese lake scenes and raised China gallery. 500 x 370. \$250
- 363**
A Chinese gilt metal and enamel fish, the articulated fish pendant enamelled in greens and blues. Length 50. \$100
- 364**
A pair of Chinese silver cuff links, the oval panel with character marks attached to a bamboo stem, stamped with Tack Hing and silver marks to reverse. \$120
- 364A**
A pair of silver cranes, one with wings outstretched, standing on a roughened silver base, displayed in a wood framed glass case with carved base. 150 x 100 x 130. \$300
- 365**
A Chinese silver gilt turquoise brooch and earrings set, the brooch with free form turquoise to the centre of an ornate silver gilt and enamel frame, a pair of conforming earrings with posts for pierced ears. \$150
- 366**
An impressive modern Chinese large sang de boeuf glazed vase, the cylindrical body with green spotted glazed highlights, blue streaky glaze to the shoulder, printed mark to the base 'Jingde Chiyou'. Professional restoration to the top rim. Height 385. \$200
- 367**
A Chinese porcelain squat baluster vase, decorated with blossom and fruit, Yongzheng six-character mark under the base. Height 170. \$200
- 368**
A Chinese porcelain cylinder vase, painted in famille rose with an encircling river landscape, the neck decorated in underglaze blue with a profusion of flowers, Qianlong seal mark under the base. Height 245. \$950
- 369**
Two rosewood carved figures, one Shao Lao, the other a rotund gent with fish at his feet, some damage to both. Height 320. See page 24. \$250
- 370**
Two Chinese carved rosewood figures, both riding a wolf dog, with carved foliage bases, glass eyes and bone teeth. 180 x 110. See page 24. \$250
- 371**
Three Chinese carved hardwood figures, including Shao Lao, with glass eyes and bone teeth. Height 170. See page 24. \$180
- 372**
Three Chinese carved rosewood figures, including Shao Lao, with glass eyes, some damage. Height 210. See page 24. \$180
- 373**
A Chinese jade handling piece, carved in high relief with a dragon and bat. Width 65. \$450
- 374**
A celadon glazed porcelain bowl, shallow circular shape raised on a slightly flaring foot ring, five spur marks under the foot ring. Diameter 205. \$400
- 375**
Two Chinese porcelain blue glazed and gilded small dishes. Diameter 115. \$250
- 376**
A small Chinese porcelain bowl, decorated in polychrome with figures. Diameter 110. \$150
- 377**
A Chinese carved yellow stone 'mountain', carved in low relief with figures seated beneath the tree. Mounted in wooden stand. Overall height 95. \$250
- 379**
A Chinese celadon vase, moulded in high relief with dragons on a wavy ground, seal mark under the base. Faulted at the rim. Height 180. \$100
- 380**
A pale caramel coloured jade carved temple dog, modelled in prowling stance. Length 155. \$140
- 381**
A sizable carved jade mythical beast and rider, the stylised lion-like animal standing squarely, the figure kneels, leaning backwards upon a saddle that forms a cover revealing a cavity to the beast's body, decorated all-over with square scroll patterns. Length 450. See page 24. \$550
- 382**
An antique Chinese embroidered panel, the outdoor scene in fabric frame with gilt embellishment, backed onto a blue fabric, with pole for hanging, 1120 x 820. \$150
- 383**
A Chinese carved blackwood table lamp base carved as Shao Lao, his robes inlaid with fine silver wire. Height 640. \$300
- 384**
A Chinese Han style funerary figure of a woman, with a robe gathered around her, her hair raised in an ornate coiffure. Height 320. \$120
- 385**
A decorative carved wood Tang style horse, with painted and gilded finish. Height 480. \$280
- 386**
A large Chinese porcelain brush pot, cylindrical shape, decorated in famille rose with gods in a celestial landscape. Four-character mark under the base. Height 200. \$250. - \$500
- 387**
A Chinese porcelain small vase, decorated with chrysanthemums, ovoid shape. Height 110. \$150
- 388**
A horn chillum pipe, the bowl engraved with a seal mark. Length 185. \$250
- 389**
A Chinese champlévé enamel and bronze censer, modelled as a grotesque mythical beast, the head forms a cover with wide open mouth to emit the smoke. Height 400. See page 24. \$800
- 390**
A Chinese carved rosewood vase stand, bamboo form legs and stretchers. 265 x 265 x 370. \$110
- 391**
A Chinese four-section carved wood inro, single figure to each side, finely carved wood shi shi attached. \$110
- 392**
A small ivory casket, the hinged lid and walls finely pierced with a foliate trellis design. 165 x 85 x 55. Some joints loose. \$120
- 393**
A filigree worked ivory paper knife, both the blade and handle intricately worked. Length 265. Some chips to blade edge. \$100
- 394**
A carved pale jade portrait bust of a man, bearded and with hair tied in an ornate top knot. Height 120. \$150
- 395**
An old Chinese bronze shallow planter, oblong shape with grotesque mask handles at either side, the walls decorated with peacocks, raised on four inward turned scroll feet. 480 x 270 x 215. \$300
- 396**
A large Chinese cloisonné bowl on wooden stand, circular shape with an inverted rim, decorated with birds and flowers on a blue ground. Diameter 380. \$300
- 397**
A 19thC Chinese reverse painted mirror, the young man holding a fan seated upon a stool, he wears traditional blue robes highlighted with gold, in original old frame with backing boards. 475 x 370. \$400
- 398**
A Tibetan cloisonné and black lacquer circular tray, decorated with an an-



201



203



206



208



209



246



250



230



226



252



247



248



271



225



273



274

cient blue three-eyed demon before a flaming background. Diameter 378. \$120

399

Three Burmese bronze 'opium' weights, moulded as mythical beasts. Tallest height 130. \$120

400

An old Chinese wooden cash box, rectangular shape, the locking lid cut with slots to accept paper money and coins. With a large collection of old Chinese coins, some paper notes and steel bar lock. 330 x 190 x 125. \$200

401

An old Japanese smoker's pipe in a container with a leather pouch and ojime bead, the leather pouch with patterned finish and gilt shi shi attached, the two-piece container with a geometric patterned finish. \$110

402

An old Japanese tobacco pipe in case with pouch, the soft leather pouch with a gilt metal clasp fitting, silvered fittings to the pipe. \$110

403

A Japanese smoker's pipe in case with pouch, similar to above, green glass ojime bead. \$110

404

An old Japanese powder flask, the turned wood section with turned bone pegged stopper, metal and horn fitting, wooden manju netsuke attached. \$120

405

An old Japanese turned wood tobacco pouch and pipe holder, the tortoiseshell type lacquered cylindrical holder with metal fitting, turned wood double gourd ojime bead attached. \$110

406

An old Japanese quality black lacquered tobacco container, pipe case and pipe, decorated with a stylised figure. \$120

407

An old Japanese red lacquer inro, five-section with bone carved turtle type shell netsuke and glass ojime bead attached. \$110

408

An Imari porcelain compot, the deep bowl of diamond shape with pierced walls raised on an oval spreading foot. Width 280. \$125

409

An early Japanese lacquered steel Samurai armour breast plate, of articulated layers joined by black ribbon. \$300

410

250 ukiyo-e prints from the Hiraki Collection (Mainichi Collection), in four hard bound volumes, each approximately 480 x 380. \$450

TUESDAY 14TH NOVEMBER 2017

2ND SESSION at 5.00pm

JEWELLERY

420

An Edwardian 9ct. gold and moonstone necklace, the fine gold chain set with eleven graduated cabochon moonstones to the front, with a further eight conforming moonstones suspended, together with five small moonstone pendant drops and fine looping chain, a small facet cut sapphire suspended from the central moonstone. \$250

421

A silver and millefiori pendant, the Maltese Cross-style pendant with a millefiole cabochon to the centre with silver chain. \$180

422

A single strand cultured semi-baroque silvery grey pearl necklace, 14ct. yellow gold clasp, near uniform size, the 82 pearls of 7.5mm. Valuation available. Length 670. See page 24. \$400

423

A large cultured golden pearl pendant, near round, 14ct. yellow gold bale fitting to the silver chain. Valuation available. See page 24. \$500

424

A single strand baroque pearl necklace with 18ct. white gold, aquamarine and white sapphire set clasp, the 69 baroque pearls individually knotted, the aquamarine of 1.84cts. Valuation available. Length 640. \$550

425

A vintage Mikimoto long strand of cultured pearls, the 134 pearls of near uniform size and approx. 6mm diameter, in original named box. Length 780. \$220

426

A 9ct. gold chain necklace, the belcher links with large bolt ring, a 9ct. gold ball spinner attached to the bolt ring, 41.2gms. \$750

427

A c.1900 9ct. yellow gold muff chain with lorgnette, the uniform box type link of length 1520, the gold plated folding lorgnette with a tortoiseshell panelled handle. See page 24. \$1,250

428

A 19thC 15ct. yellow gold Albertina chain, one double strand longer length and another shorter with various gold bell type fittings, slide and single tassel. 20gms. See page 24. \$1,250

429

A Victorian 15ct. yellow gold double chain length with fob swivel pendant, the 15ct. yellow gold oval uniform link chain attached to a 15ct. Albertina, the Victorian 18ct. fob seal with classically engraved chalcedony panels. 36gms. \$1,600

430

A 21ct. gold chain and pendant, the three-dimensional flower pendant attached to a fine box link chain with the two chain ends suspended below the pendant (as in a simplistic tassel), the chain ends terminating in a mat gold ball, 10.78gms. \$400

431

A retro 9ct. gold smoky quartz pendant, the large emerald cut smoky quartz claw set in a deep mount decorated with pierced hearts. \$220

432

A vintage ivory bead necklace, graduating twisted rectangular form beads together with small oval beads, ivory screw clasp. \$220

433

A vintage coral necklace, graduating red twig coral pieces, with yellow metal bolt ring clasp. See page 24. \$180

434

A vintage amber and rose quartz necklace, the large amber nuggets in sections divided by four round rose quartz beads of 15mm., with silver clasp. See page 24. \$200

435

A silver and cat's eye pendant, a large cat's eye set to an elaborate reversible silver frame, with a plain silver torque. \$150

436

A silver and quartz pendant, the large polished quartz set in an ornate silver frame decorated with florals and leaves with a silver bird on branch to the centre, ornate silver bale, together with a silver chain. \$150

437

A Navajo silver and turquoise cuff, decorated with leaves, the centre set with a polished free form turquoise with good veining. \$150

438

A Navajo silver and turquoise ring, matching the above cuff. \$100

439

A Navajo silver coral and turquoise cuff, decorated with leaves and scrolls, with two red coral and one turquoise cabochon set to the centre. \$120

440

A Navajo silver coral and turquoise ring, matching the above cuff. \$100

441

A silver and turquoise scarab bracelet, the five turquoise scarab beetles set in decorated silver panels, fine silver links and push clasp. \$150

442

A lady's 9ct. yellow gold, sapphire and diamond set bracelet, the nine sapphires totalling 5.13cts. spaced by small bead set diamonds in a two-tone triple leaf style link. Valuation available. \$340

- 443**
A late Victorian 9ct. rose gold half-hinged bangle, set with three round mixed cut sapphires spaced by two old Swiss cut diamonds. Hallmarked Chester 1900. Valuation available. \$360
- 444**
A vintage lady's 9ct. rose gold curb link bracelet, larger size hollow links, heart padlock clasp. 19.1gms. See page 29. \$400
- 445**
A 9ct. gold gate bracelet, traditional links with padlock clasp, 11.7gms. \$220
- 446**
A 9ct. gold charm bracelet, the belcher link bracelet with puff heart padlock and a 9ct. gold apple charm, 19.1gms. \$350
- 447**
A 9ct. gold charm gold charm bracelet, the belcher link bracelet with large parrot beak clasp and ball charm set with small diamonds, 17.4gms. \$320
- 448**
A 9ct. white gold modern lady's bangle, half hoop design. 17.26gms. \$420
- 449**
A modern lady's 9ct. yellow gold bangle, half hoop form. 10.75gms. \$260
- 450**
A c.1900 rose gold, peridot and white sapphire bracelet, the eight open hollow panels each framing a green peridot or white sapphire in rub-over mount, push-in clasp. 11.9gms. See page 29. \$300-\$380
- 451**
Two Scottish agate jewellery items, the unmarked silver bracelet set with five large oval polished agate pieces, together with a silver and agate cross brooch. \$100
- 452**
A New Zealand Fred Money silver half hinged bangle, classical scroll engraved top, stamped maker's mark. \$220
- 453**
A 15ct. rose gold hinged bangle, the exterior with geometric and floral engraving, 27.1gms. See page 29. \$700
- 454**
A 14ct. white gold pearl diamond and ruby bracelet, the top set with 12 small round brilliant cut diamonds with eight small pearls and a central facet cut ruby, the mesh chain with push clasp with safety catch, 25gms. \$500
- 455**
A three-strand coral bracelet, with 5mm cylindrical shaped beads and 14ct. gold push clasp. \$250
- 456**
An 18ct. gold bracelet, the articulated hexagonal link bracelet with push clasp and safety clips, 80.5gms. See page 29. \$2,800
- 457**
An 18ct. white gold and multi-diamond fine tennis bracelet, the 102 modern brilliant cut diamonds set in a row with TDW of 1.69ct. See page 29. \$2,000
- 458**
A stylish lady's 18ct. yellow gold, white and fancy yellow diamond bracelet, as new condition, the 52 claw set pear shaped fancy yellow cut diamonds with TDW of 9.78ct., each framed by small round brilliant cut diamonds, the 780 micro-bead set diamonds with TDW of 3.12ct. Valuation available. See front cover and page 29. \$16,500
- 459**
A pair of elegant modern lady's 18ct. white gold and diamond articulated bell flower earrings, the suspended drop tapered flower with a further smaller conforming drop below, entirely encrusted with modern round brilliant cut diamonds, the 290 diamonds with TDW of 2.46ct. Valuation available. See page 29. \$3,000
- 460**
A lady's 18ct. white gold, rubellite and diamond dress ring, the oval facet cut rubellite of 2.49ct. framed by two tiers of lobed forms entirely encrusted with a total of 128 small round brilliant cut diamonds totalling 0.34ct., forked shoulders. Valuation available. See page 29. \$1,850
- 461**
A pair of 18ct. lady's black and white diamond encrusted earrings, wide curved form with the flower and leaf forms detailed with black diamonds framed by a fully encrusted panel of small white brilliant cut diamonds. The 438 white diamonds with TDW of 2.21ct., the 112 black diamonds with TDW of 0.58ct. Valuation available. See page 29. \$4,400
- 462**
An 18ct. white gold and multi-diamond cluster lady's dress ring, the two tapered bands with two raised flowerhead forms, the top entirely set with diamonds including 25 baguette diamonds with TDW of 1.08ct. and 48 round brilliant cut diamonds with TDW of 2.09ct. Valuation available. See page 29. \$3,800
- 463**
An impressive lady's 18ct. white gold, rubellite and diamond necklace, alternating large oval facet cut and emerald cut rubellites, each framed by round brilliant cut diamonds and spaced by further small diamond clusters, a trilliant cut rubellite framed by diamonds to the clasp. The 20 rubellites totalling 77.83ct., the 1850 diamonds with TDW of 13.57ct. Valuation available. See page 29. \$35,000
- 464**
An 18ct. gold and diamond necklace, the graduating stretched S-form links with bands of small round brilliant cut diamonds set in between, approx. total diamond weight 4cts., 35gms. \$2,500
- 465**
An 18ct. white gold and diamond ring set, the 0.62ct. princess cut diamond set high in a tulip claw mount with a further four smaller princess cut diamonds and ten round brilliant cut diamonds set to each shoulder in a link style mount, together with a confirming band set with nine princess cut diamonds and twenty round brilliant cut diamonds, TDW 1.32cts. Valuation available. See page 29. \$2,500
- 466**
A 14ct. white gold, lavender jadeite, diamond and amethyst ring, the 10.50ct. mottled lavender jadeite cabochon in a claw mount and surrounded by eight round brilliant cut diamonds and eight mixed cut amethysts, with unusual hinged opening shank, total diamond weight 0.45cts. Valuation available. See page 29. \$1,500
- 467**
An 18ct. white gold emerald and diamond ring, the 1.54ct. oval mixed cut natural emerald claw set and surrounded by 24 small round brilliant cut diamonds, the split shank and shoulders bead set with a further 51 matching diamonds, TDW 0.50ct., emerald of medium colour and Type II - 12 clarity, valuation available. \$1,800
- 468**
An estate 18ct. gold and three stone diamond ring, the 0.43ct. round brilliant cut diamond claw set with a 0.32ct. round brilliant cut diamond to each side, upright shoulders. Colour G-H, clarity SI-1/SI-2, TDW 1.07ct. Valuation available. \$2,400-\$3,000
- 469**
A gent's 14ct gold and diamond ring, fifteen round brilliant cut diamonds bead set to the central curved panel, wide tapering shank, valuation available. \$2,000
- 470**
A lady's 18ct. white gold Art Deco style diamond cluster ring, English made, the two central round brilliant cut diamonds bead set in a rectangular panel framed by a further band of bead set diamonds, the 24 round modern brilliant cut diamonds with TDW of 0.75ct. Valuation available. See page 29. \$1,600
- 471**
An 18ct. white gold, Art Deco style emerald and diamond cluster ring, the central oval mixed cut emerald in a rubover setting framed by a band of 20 round modern brilliant cut diamonds set in angular panels, TDW of 0.60ct. Valuation available. See page 29. \$2,200
- 472**
An 18ct. Art Deco style lady's ruby and diamond cluster ring, the oval mixed cut ruby framed by a diamond form panel set with 16 baguette and round

brilliant cut diamonds, English made. See page 29. \$1,600

473

An 18ct. yellow and white gold, Art Deco style diamond and sapphire clustering, the central modern brilliant cut diamond framed by an encircling band of sapphires and an outer band of 20 modern brilliant cut diamonds, English made. See page 29. \$2,800

474

An 18ct. white gold lady's aquamarine and diamond ring, the emerald cut aquamarine framed by a rectangular band of 12 baguette diamonds and a round brilliant cut diamond to each corner, English made. See page 29. \$2,000

475

An 18ct. gold diamond and peridot bug brooch, the 1.85ct. oval mixed cut peridot in a rub over mount forms the body, the head a 0.60ct. princess cut diamond, with two small modern round brilliant cut diamonds for the eyes, yellow gold wings and legs. Valuation available. See page 29. \$1,500

476

An antique 9ct. yellow gold and citrine large brooch, pressed open leaf and scroll design and overall lozenge form, the oval mixed cut citrine of approx. 9.50cts. Valuation available. \$340

477

A mid-20thC 14ct. yellow gold cultured pearl spray brooch, the eight near uniform pearls set in a floral design. Valuation available. \$300

478

An Edwardian 9ct. yellow gold and garnet bug brooch, the two rhodolite garnets claw set to the body, the wings and head highlighted with three small seed pearls, upon a plain bar brooch terminating in fine castellated wirework and beads. Valuation available. \$300

478A

An 18ct. yellow gold and diamond pendant and earrings suite, the flower form set with a small round brilliant cut diamond to the centre, the pendant with suspension ring and the earrings with posts and butterflies for pierced ears. Valuation available. \$380

479

A 1970s 9ct. yellow gold and large citrine brooch, the rectangular step cut citrine of 48.99ct. and graded as 'extremely pale yellow' and 'eye clean', claw set within an open plain bar form frame. Valuation available. \$420

480

An Edwardian 9ct. rose gold bar brooch, three decorative bells suspended from the hollow chenier bar, each bell with an engraved front, 3.3gms. \$120

481

An Art Deco platinum and 9ct. white gold bar brooch, the small emerald cut salmon pink tourmaline claw set to the centre with two horizontal set diamond forms to each side with a small diamond to the middle. \$120

482

A late Victorian 15ct. yellow gold and seed pearl bar brooch, plain and rope twist bars with seed pearl set crescent centre. 3.72gms. \$110

482A

A vintage natural bright dark toned opal and 15ct yellow gold brooch, the 1.80ct opal of 'natural type 1, with a black N1 body tone, bright directional green blue and purple patchwork play of colour'. Valuation available. \$350

483

A 9ct. rose gold bow brooch. Width 33. \$100

484

A 14ct. rose gold gem set picture brooch, a hand painted porcelain panel to the centre decorated with a young woman in costume, a small cabochon opal to each side with a facet cut ruby to the top. Length 350. See page 29. \$400

485

An ornate silver 3D brooch, in the form of an armoured knight on horseback, stamped 'SILVER' on the reverse, length 85. \$150

486

A Scottish silver and smoky quartz brooch, the Celtic design frame set with a large facet cut smoky quartz to the centre, Glasgow 1957. \$150

487

An 18ct. yellow gold and cultured South Seas pearl ring, the 12.25mm diameter pearl of 'silvery white body colour with rosy hues', rectangular shoulders and cup setting support. Valuation available. See page 29. \$380

488

A vintage 9ct. rose gold and tiger's eye large ring, the oval panel intaglio cut with the head of a classical warrior in profile, claw set in a substantial plain frame supported upon the band. Valuation available. \$220

489

A 14ct. white gold, black and white diamond dress ring, of tapered cross-over form, each mirrored section bead set with six circular facet cut black diamonds framed by micro-bead set diamonds, stamped marks. \$400

490

A heavy vintage 18ct. yellow gold and diamond dress ring, the central raised band with five graduating modern brilliant cut diamonds in rub-over mounts flanked by lower mildly flared bands each with a row of channel set smaller diamonds. 9.47gms. \$400

491

An 18ct. white gold sapphire and diamond dress ring, the 1.36ct. oval standard mixed cut natural blue sapphire of good colour and cut, framed by 18 channel set baguette cut diamonds with TDW of 0.52ct. Valuation available. See page 29. \$850

492

A 10ct. white gold modern lady's diamond ring, the central round brilliant cut diamond of 0.30ct. framed by two further modern brilliant cut diamonds totalling 0.38ct., the shoulders with 12 cast-inset round brilliant cut diamonds of 0.30ct. TDW of 0.98ct. Valuation available. See page 29. \$360

493

A c.1970s 14ct. yellow gold and smoky quartz ring, the large oval facet cut smoky quartz held by four long curving claws above the medium width band. 11.9gms. \$250

494

An 18ct. white gold and diamond ring, a small claw-set princess cut diamond above six baguette cut diamonds in a square mount, with a further 24 round brilliant cut diamonds to the outer rim, five conforming round brilliant cuts set to each shoulder. TDW 0.52cts. Valuation available. See page 29. \$750

495

A modern lady's 18ct. yellow gold ruby and diamond dress ring, the oval facet cut ruby flanked by two modern brilliant cut diamonds, rub-over settings. \$950

496

A 9ct. lady's modern diamond and ionite dress ring, the large oval facet cut ionite of deep blue tone held by four claws and surrounded by small brilliant cut diamonds. \$450

497

A pair of 18ct. and 9ct. tanzanite and diamond rings, Art Deco style, the emerald cut tanzanite framed by encircling diamonds, the companion ring fitting to one side with a conforming band of diamonds. \$880

498

A c.1900 heavy 18ct. yellow gold and solitaire diamond dress ring, the old rose cut diamond claw set within an oval pierced looping frame. Birmingham hallmarks. 5.39gms. \$380

499

An 18ct. yellow gold estate diamond and synthetic ruby ring, the three claw set rubies in a row spaced by two pairs of small diamonds. \$240

500

An 18ct. yellow gold estate three-stone diamond gypsy set ring, old cushion cut, the interior shank stamped 18ct. See page 29. \$550

501

A vintage 18ct. yellow gold natural

ruby and diamond lady's ring, the three bright red/pink facet cut rubies in a lozenge form mount set with seven old cut diamonds, one missing. Hallmarked Birmingham 1913. \$220

502

An early 20thC 18ct. yellow gold ruby and diamond ring, engraved gypsy style with a central old cut diamond flanked by two rubies. Birmingham hallmarks. See page 29. \$320

503

An 18ct. yellow gold, sapphire and diamond lady's dress ring, the three sapphires in rub-over mounts raised above the curved and pierced top band panel, bead set with 26 small diamonds. See page 29. \$450

504

An 18ct. yellow gold estate natural sapphire and diamond ring, the half-hoop coronet mount with three medium pale blue Ceylon type sapphires interspaced by four old rose cut diamonds. Valuation available. \$480

505

An Art Deco 18ct. gold and platinum diamond and sapphire ring, four old European cut diamonds set to each corner with the thirteen sapphires in saltire pattern, TDW 0.35ct, Colour F-G, Clarity VS-SI2. Valuation available. See page 29. \$1,000

506

A modern lady's 9ct. yellow gold ruby and diamond dress ring, the large tear drop form faceted ruby held by four claws, flanked by two small diamonds. See page 29. \$450

507

A lady's modern 9ct. gold and green topaz and diamond dress ring, the fancy setting with large oval facet cut green topaz highlighted with three modern brilliant cut diamonds to one side. \$200

508

An 18ct. yellow gold and three stone diamond ring, the three old mine cut diamonds star set in panel to the top, total diamond weight 0.22cts. Valuation available. See page 29. \$400

509

An 18ct. yellow gold and diamond ring, the 0.40ct. old mine cut diamond gypsy set to the top of a tapered shank, colour F-G. Valuation available. See page 29. \$800

510

A 14ct. white gold sapphire and diamond ring, the 2.20ct. oval mixed cut sapphire claw set with six round modern brilliant cut diamonds, total diamond weight 0.38ct. Valuation available. See page 29. \$900

511

A 14ct. gold and diamond ring, the 0.30ct. early European cut diamond claw set in a high vee mount, with a row of ten single cut diamonds

to each side, total diamond weight 0.60ct. Valuation available. See page 29. \$700

512

A 14ct. gold and malachite ring, the marquise shaped malachite carved with scrolls, claw set to each end and in a decorative frame. \$150

513

A late Victorian 18ct., gold ruby and diamond ring, two facet cut rubies and three small diamonds set to a decorative panel to the top. London 1891. See page 29. \$150

514

A 14ct. gold and coral ring, the oval cabochon coral in a rub over mount surrounded by a decorative border, upright shoulders. \$160

515

A gent's 9ct. gold and diamond ring, the central oval panel set with nine round brilliant cut diamonds, decorative shoulders and tapering shank, 9gms. \$180

516

An estate 18ct. gold and diamond solitaire ring, the 0.45ct. brilliant cut diamond claw set, upright shoulders, Old valuation available. \$450

517

A platinum, emerald and diamond ring, the 0.76ct. marquise cut emerald claw set and surrounded by baguette cut diamonds in a ribbon mount. TDW 0.85ct. See page 29. \$1600.

518

A Victorian 1889 full sovereign, set in a pendant mount with suspension ring. \$450

519

A vintage 9ct. rose gold fob seal, the unengraved seal opening to reveal a photo locket, stamped gold marks. 5.13gms. See page 29. \$150

520

A 19thC gold cricket themed fob seal on a 14ct. yellow gold chain, the seal with bat, wickets and a carnelian ball, unengraved bloodstone incense seal. Total weight 6.08gms. See page 29. \$180

521

A late Victorian 9ct. yellow gold fob spinner, set with circular discs of bloodstone and carnelian. Hallmarked Birmingham 1891. \$260

522

A late 19thC 10ct. yellow gold fob spinner, oval form, bloodstone and carnelian panels, engraved frame, belt type detail to the mount, stamped 10C. \$180

523

A 19thC 15ct. yellow gold fancy fob seal, set with an oval facet cut purple stone, relief floral detail. 19.2gms. See page 29. \$800

524

An early 20thC 15ct. yellow gold he-

raldic fob seal, the carnelian panel intaglio cut with a coat of arms, substantial scroll wire frame. 15.2gms. See page 29. \$580

525

A c.1900 9ct. yellow gold fob spinner, circular carnelian and bloodstone panels, chain link frame. \$110

526

A good N.Z. Colonial 15ct. yellow gold and gold bearing quartz fob, tapered long pentagonal form, gold cap mount with decorative bands and shield cartouche. Length 52. See page 29. \$950

527

A George III rose gold seed pearl and hair plait mourning brooch, curved rectangular form, the hair plait under a rock crystal panel framed by seed pearls, gold frame and back, testing as 9ct. \$160

528

A pair of 9ct. gold, pearl and diamond stud earrings, the round deep cream lustre pearls set within a circle of small round brilliant cut diamonds, with posts for pierced ears. \$180

529

A late 19thC rolled gold Dennison sovereign case, scroll engraved, push-button release. \$120

530

A late George III 15ct. yellow gold lorgnette by Dolland of London, spring folding mechanism, pivot central folding, circular suspension ring engraved with maker's mark. 15.6gms. \$900

531

A 9ct. gold, garnet and pearl stick pin, the large oval cabochon garnet in a rub over mount set with eight seed pearls. \$100

532

A c.1900 9ct. yellow gold propelling combination pen and pencil, bloodstone end, sliding mechanism for the pencil, stamped 9ct. 14gms, in box. \$120

— CLOCKS & WATCHES —

533

A lady's 18ct. gold pocket watch, the gold enamel dial with Roman numerals and engraved centre, the back profusely engraved with florals and scrolls, stem wind and in working order, 31.3gms including movement. \$600

534

A 19thC gilt cased half hunter pocket watch, fusée chain movement signed Josh Cording, Holborn. White enamel dial, repaired. With key. \$150

535

A late 19thC 'American Watch Co.' 18ct. yellow gold open faced gent's pocket watch, the movement plate with maker's details including quote 'Waltham', not working. 70.5gms. See page 32. \$700



275



276



285



286



300



301



312



314



313



315



322



323



324



336



347



348



350



349



351

536

An 18ct. gold cased open face pocket watch. Hallmarked London 1850. White enamel face with Roman numerals, railtrack minutes, subs seconds dial at VI, key wind fusée chain movement, signed James Cassels, Lanark. Diameter 54mm. Gold weight 66gms, total weight 143gms. With keys. See page 32. \$3,400

537

An early 20thC 18ct. yellow gold gent's half-hunter pocket watch by E. Dent & Co., the fusée chain movement in working order, the backplate engraved with maker's details including maker to the queen and numbered 32766, working, with an 18ct. yellow gold key and in original named E. Dent & Co. box. 65.8gms. Diameter 43. See page 32. \$2,800

538

A lady's Cartier wristwatch, gold plated over silver, the tricolour enamel dial with Roman numerals, Cartier stamp and marks to the back, with leather strap. \$120

539

A Rolex bi-metal Date/Just lady's wristwatch in 18ct. yellow gold and stainless steel, the white enamel dial with date aperture and gold Roman numerals, all original. Working order. Purchased by our vendor at Cordy's 2008. See page 32. \$2,000

540

An Omega Constellation quartz lady's wristwatch, bi-metal case and strap, champagne dial, Dauphine hands. Requires battery. \$200

541

An 18ct. lady's wristwatch, the enamel dial with gold batons and hands, some cracking, with decorative articulated gold strap, not in working order, 37gms (incl. movement). See page 32. \$900

542

A Longines 'Charleston' lady's wristwatch, quartz movement, requires battery. In case. \$100

543

A vintage gents Breitling wristwatch, the enamel dial with batons and Arabic numerals, seconds hand, some wear, stainless steel case with later leather strap. In working order. See page 32. \$350

544

Audemars Piguet 18ct. yellow gold gents calendar wristwatch, subsidiary date and day dials, moon phase aperture, the cream enamel dial with Roman numerals and maker's details. Diameter 34. See page 32. \$9,800

545

A 19thC French mantel clock, with architectural case surmounted by an elegant gilt-metal kylix-form tazza, the white enamel dial with Roman numerals marked for the retailer

Charles Oudin, Horologer de la Marine Impériale, Palais Royal 52, Paris. Bell striking pendulum movement with key. Height 300. \$450

546

A c.1800 French Empire black and white marble and ormolu portico clock, the circular ormolu cased movement with white enamel dial and Roman numerals suspended between the two tapered white marble columns on square section black marble stands, further ormolu adornments, eagle pediment to the case, the movement with silk suspension, striking to the hour and half hour upon a bell, the rectangular white marble stand with adjustable ormolu feet, c.1800. Valuation available. See page 32. \$2,600

547

A brass Congreve rolling ball clock, the four-pillar frame with tilting table to accommodate the balls surmounted by the skeleton fusée movement with three enamel annular dials, raised on a 'Sorrento' inlaid walnut plinth base with drawer and enclosed within a brass framed glass case. 340 x 300 x 445. See page 32. \$2,500

548

A brass skeleton clock under glass dome, the double fusée chain movement striking on a bell, the white enamel cartouche dial with Roman numerals and red enamel filigree hands. Overall height 500. \$1,800

549

A French Louis XV style mantel clock, the brass case of classical balloon shape flanked by acanthus scrolls and surmounted by a double cartouche with butterfly finial, the plinth base fronted by two oval cartouches. The white enamel dial with Roman numerals, the movement striking on a bell. Some faults. Height 370. \$400

549A

A French ormolu cased mantel clock, the mechanism housed in a drum case with a burgundy porcelain dial, surmounted by a trophy group and flanked by an allegorical figure in 15thC costume, raised on a plinth base with further porcelain panel. Figure loose, no pendulum or key. Under dome. Width 500. \$600

550

A late 19thC French fancy brass cased carriage clock, the gilt dial with stylised floral pierced grill, enamelled chapter ring with Arabic numerals, with key, not working. See page 32. \$300

551

A 19thC French brass cased carriage clock, the white enamel dial with Roman numerals detailed 'Ashworth & Co. Ltd, Harrogate, Made in Paris'. With key, not working. \$220

552

An Edwardian Sheraton Revival bracket clock, mahogany case with inlaid decoration, with eight-day movement. Height 235. \$150

552A

A Victorian dial clock, with serpentine walnut framed white enamelled face signed 'Carter, London', raised on a scroll carved plinth. Bell striking movement. Height 520. \$250

SILVER

553

A Victorian silver and ruby glass double ended scent bottle, the faceted body with embossed silver cap ends, some gilding remaining, some attention to hinges required. \$120

554

A silver and crystal dressing table pot, hobnail decoration to the crystal, machine decoration to the lid, Birmingham 1922. \$150

555

Two silver pique work items, a small hairbrush and a cut crystal vanity jar. \$100

556

An Edwardian silver photo frame, with shaped border. Birmingham 1908. Height 190. \$120

557

A 1920s silver circular photo frame, oak strut back. Birmingham 1922. Diameter 130. \$120

558

An Edwardian silver photo frame, the frame embossed with florals and leaves. Birmingham 1902. \$130

559

An Edwardian silver photo frame, heavily embossed with florals, requires some repair to back. Birmingham 1900. 170 x 260. \$180

560

A modern silver double photo frame, decorated with bows and swags, backed with blue velvet and strut. Sheffield 2000. 150 x 80. \$120

561

A modern silver triple photo frame, decorated with florals, backed in blue velvet with strut. Sheffield 2003. 240 x 120. \$160

562

An Edwardian silver and glass match striker, the glass with ridged exterior and space for matches, with plain silver top, Birmingham 1902. Height 60. \$120

563

An Edwardian silver and glass match striker, the exterior with ridges and space for matches, the ornate silver top embossed with florals and leaves, London 1907, 80 x 70. \$160

564

An early 19thC silver gilt and agate

snuff box, oval form, the striated agate panels to the lid and base in rub-over mounts, engraved detail, some damage to agate. 73 x 50. See page 32. \$220

565

An 18th/19thC 18ct. yellow gold, silver and bloodstone snuff box, the lid with bloodstone panel, the lid frame and sides of 18ct. gold, the later base in silver. 430 x 450. \$360

566

A silver cigarette box of oblong shape with engine turned lid, and original wood lined interior. Birmingham 1920. Length 180. \$200

567

An Edwardian silver cigarette box, square shape, the hinged lid engraved with a crest; a lion rampant holding a cross-crosslet. Birmingham 1909. 90 x 90 x 50. \$120

568

An Edwardian cased three-piece silver smokers' suite, the three pieces engraved to 'E.C. Ashby from Federal Club, ChCh NZ April 1905'. With accompanying amber cigarette holder with 9ct. gold mount. Hallmarks for Chester 1899 by William Neale. \$150

569

A George IV silver snuff box, the exterior with machined engraving and gadrooned borders, the interior with gilt wash, Birmingham 1821 by John Shaw. \$250

570

A silver double sovereign case, oval shaped, monogrammed. Birmingham 1924 by Henry Williamson Ltd. \$220

571

A Victorian silver vinaigrette, shaped rectangular with foliate engraving, the gilt washed interior with foliate pierced grille. London 1842 by George Unife. Width 44. See page 32. \$275

572

An Edwardian silver heart shaped pill box, the hinged lid heavily embossed. Birmingham 1901. \$95

573

A small Edwardian silver jewellery box, rectangular with serpentine walls, velvet lined interior. Birmingham 1908. \$120

574

An early 1900s silver trinket box, the rectangular box with scalloped front and sides on four delicate feet, the lid with a restrained Art Nouveau pattern, the interior with original fabric lining, Birmingham 1917, 130 x 80. \$150

575

A silver inkwell, capstan form with a glass liner (some chips), Birmingham 1921. \$180

576

A silver shoe pin cushion, in the form of a high heel Turkish slipper. \$100

577

A vintage silver and enamel hinged

lidded box, blue, green and gold dominant to the lid and sides, the base stamped '925'. 100 x 65 x 22. \$180

578

A silver child's spoon and pusher, cased, decorated with nursery rhyme images. Repair to spoon. Birmingham 1922. \$100

579

A George II silver caster, baluster vase shaped with tall cover with simple piercing, slightly faulted. London 1758 by John Delmester. Height 130. \$220

580

An Edwardian silver caster, octagonal baluster vase shaped with tall cover with comma piercing, finial slightly bent. Birmingham 1902 by Alex. Clarke Co. Ltd. Height 195. \$225

581

A George VI silver caster, baluster vase shaped with tall cover with cruciform piercing. Birmingham 1945 by G Bryan & Co. Ltd. Height 175. \$220

582

A silver sugar caster, square section baluster vase shaped with canted corners, tall pierced patterned cover. London 1966, maker HyC. Height 180. \$220

583

An Old Sheffield Plate meat cover, with coat-of-arms (possibly of a garter knight), crested with a horse passant erminois before the sun-in-his-splendour. Maker's mark: an orb over GK. Width 365. See page 32. \$275

584

Two Victorian silver-plated meat dish covers, oval lobed design with ornate leaf, fruit and scroll detachable handles. Length 470 and 360. The smaller one with wear. \$300

585

A silver three-piece tea set, squat circular shape with gadrooned rims, the pot with boxwood handle and finial. Sheffield 1932 by Cooper Bros. & Sons Ltd. Total weight 1150gms. \$900

586

A heavy Victorian silver teapot with greyhound finial, squat form with half lobed body. London 1872 by R. & S. Garrard & Co. Crested. 856gms. \$700

587

A 1920s Dutch silver four-piece tea set in the Georgian style, plain boat form with raised rib detail. Weight 998gms. \$700

588

A Georgian style pear shaped cream jug, with serpentine rim, raised on three pad feet. Birmingham 1911 by William Devonport. 102gms. \$100

589

A Victorian Irish sugar bowl, cauldron shape with two handles issuing from the rim, raised on four pad feet. Dublin 1893; along with a matching pair

of sugar tongs. Sheffield 1915. Total weight 125gms. \$120

590

A Victorian silver sugar bowl and sifter spoon in case, the deep bowl with a repeating pattern of raised stiff leaves, the spoon with intricately pierced bowl, knopped stem and ball finial, in original shaped and fitted box. London 1892 by John Aldwinckle & Thomas Slater. 220gms. \$200

591

A seven-piece Edwardian silver condiment set, comprising two vase shaped pepperettes, four two handled salt cellars and a lidded mustard pot, with accompanying spoons, in red leather case with satin and velvet lining. Birmingham 1907 by Williams (Birmingham) Ltd. \$325

592

A cased set of four Edwardian silver salts, each of boat shape with pierced walls and moulded rims, with blue glass liners and salt spoons, in case. Chester 1904 by Trevitt & Sons. \$150

593

A silver six-piece Georgian Revival condiment set. Birmingham 1967 by Elkington & Co. Total 208gms. \$200

594

A pair of silver salts and spoons, squat circular shape on ball feet, the spoons with ball finials. In Petersen's Ltd N.Z. marked case. Chester 1915. \$125

595

A small silver salver, circular with pie-crust rim, raised on three scroll feet. Sheffield 1922 by Albert Faulkner. 350gms. Diameter 205. See page 32. \$300

596

A silver salver, circular with pie-crust rim raised on four pad feet. Chester 1923 by Barker Bros. 535gms. Diameter 265. \$425

597

A 1930s silver square form salver, pie crust edge, unengraved. Sheffield 1934 by William Hutton & Sons Ltd. 255 x 255. 660gms. \$500

598

A silver harlequin cutlery canteen, fiddle pattern, principally early 19thC, comprising 12 table forks, 11 dessert forks, 12 dessert spoons, all fiddle pattern; along with 12 table knives and 12 luncheon knives with silver plated fiddle and thread pattern handles and stainless-steel blades. Total silver weight 1875gms. \$1,250

599

Five George III Scottish silver table forks, fiddle pattern, crested with a hound below 'Sempur Fidelis'. Edinburgh 1811 by John Zeigler. 303gms. \$200

600

Three William IV silver table forks, fiddle pattern. London 1830. 210gms. \$140



355



369



370



354



371



372



422



427



389



381



422



423



428



433



434

- 602**
Four George III silver dessert spoons, fiddle pattern, crested with a boar's head. London 1789 by Solomon Hougham. 200gms. \$160
- 603**
Two George III silver tablespoons, one Old English, crested, 1807; the other fiddle pattern 1819. \$140
- 604**
A matching pair of George III feather edged Old English silver tablespoons. London 1773. \$150
- 605**
A Victorian fiddle pattern silver sauce ladle. Exeter 1850. \$100
- 607**
A George III Old English silver table-spoon. London 1800. \$80
- 608**
An 18thC Old English silver tablespoon, possibly Irish provincial with maker 'W.C.'. \$80
- 609**
A pair of Victorian fiddle pattern Irish silver teaspoons. Dublin 1886. \$80
- 610**
A cased set of silver Apostle tea-spoons. Sheffield 1950 by Henry Atkin. \$100
- 611**
A cased set of 12 silver teaspoons, Celtic point pattern with ribbon finial and thread edge. Sheffield 1925 by John Round & Son Ltd. \$160
- 612**
A cased set of six silver teaspoons, with decorative finials and stems. London 1966 by Goldsmiths & Silversmiths Co. Ltd. \$100
- 613**
A walnut cased set of 12 silver tea-spoons and a pair of sugar tongs, Old English shape with decoratively moulded stems. Sheffield 1927 by Joseph Rodgers & Sons. \$200
- 614**
A set of silver dessert spoons, in associated case, Old English pattern. Sheffield 1922 by Walker & Hall. 297gms. \$180
- 615**
A cased set of silver Apostle tea-spoons, with shell shaped bowls and twist stems. Birmingham 1906 by Robert Pringle & Sons. \$125
- 616**
A pair of Dutch silver spoons, with ornate cast stems with galleon finials. English import marks to the bowls. Total 115gms. \$125
- 617**
A set of six silver and greenstone coffee spoons, the bowls socket fitted to the solid nephrite handles. \$225
- 618**
A pair of 19thC 'Old Russian Silver' sauce boats, lobed shell form, fancy leaf scroll handles, each raised on a pedestal base with four scroll feet, fine engraved detail, the base of each engraved 'Old Russian Silver'. 633gms. 160 x 110 x 165. See *front cover and page 32*. \$1,000 - \$2,000
- 619**
An early 20thC silver gravy boat, faceted form, decorative cast rim. London 1919 by Josiah Williams & Co. 226gms. \$200
- 620**
A N.Z. Arts & Crafts silver candelabra, with central stick and two sinuous arms supporting nozzles and drip pans. Marked 'J. Auger, Torbay, A1-925'. Height 315, 722gms. \$400
- 621**
A pair of George III silver candle-sticks, the plain columns raised on bell shaped circular bases decorated with fluted knobs and gadrooned detailed nozzles. Sheffield 1805 by John Roberts & Co. Height 195. \$500
- 622**
A silver epergne vase, the central trumpet vase surrounded by three smaller epergnes with scalloped mouths. Birmingham 1914 by Hukin & Heath Ltd. Height 270. \$160
- 623**
A pair of small fine quality Edwardian period two-handled silver tazzas, on tall stems. Sheffield 1905. Height 100. \$140
- 624**
A silver comport, the shallow dish with scalloped rim moulded with shells and leaf motifs raised on a knopped stem from a circular spreading foot. Sheffield 1926 by Walker & Hall. 450gms. Diameter 205. \$400
- 625**
A good silver basket, with foliate pierced walls, the serpentine rim with acanthus moulding, raised on four splay feet. Sheffield 1926 by Atkin Bros. 355gms. Width 210. See *page 32*. \$350
- 626**
A silver scalloped shaped dish, with engraved decoration and shell shaped thumbpiece, raised on three scroll feet. Birmingham 1971 by David Hollander & Son. 122gms. \$120
- 627**
An Edwardian six-slice silver toast rack, with central handle and ball feet. Sheffield 1905. Length 130. \$120
- 628**
A silver three-piece cruet set, comprising a mustard pot, salt and pepperette, octagonal shape. London 1918. \$150
- 629**
A George III silver decanter coaster, circular with spreading base and gadrooned rim, inset turned wood centre and glass insert. Crested with a dove beneath the motto 'Peace & Grace'. London 1799, maker I.D. Diameter 130. See *page 32*. \$225
- 630**
A George III silver salt cellar, oval with gadrooned rim, raised on shell knees and pad feet, monogrammed and with a blue glass liner. London 1773, probably William Cattell; with an associated Victorian silver fiddle pattern salt spoon. Total weight excluding liner 108gms. \$125
- 631**
A miniature Edwardian teapot shaped pepperette by Saunders & Shepherd. Chester 1902. See *page 32*. \$280
- 632**
A small silver trophy cup rose bowl, engraved with cattle in a rural landscape along with 'Evening Post Cup, 1930, W.F. Jacob & Son'. Sheffield 1926 by Martin Hall Co. Ltd. 100gms. \$75
- 633**
An Edwardian silver trophy cup, presentation engraved, plain bowl raised on a knopped stem and a circular spreading foot. Sheffield 1905 by Walker & Hall. 280gms. Height 200. \$150
- 634**
An Edwardian silver trophy cup, presentation engraved, the plain bowl raised on a knopped stem from a circular spreading foot with bead detail. Birmingham 1907 by T.E. Atkins. 260gms. Height 220. \$150
- 635**
A pair of Edwardian silver vases, of trumpet shape, decorated repoussé in the japonais manner with irises. London 1905 by William Comyns & Sons. Height 190. \$225
- 636**
A George III silver wine funnel, gadroon edge, decoratively pierced bowl, the strainer support ring present, the base section with original curved tip end intact. Shell shaped clip to the top rim. London date mark rubbed by Rebecca Emes & Edward Barnard I. See *page 32*. \$600
- 637**
A set of six George III silver fruit knives and forks, with silver blades and tines, fitted to silver reeded patterned handles. London 1799 by Moses Brent. Total weight 590gms. \$380
- 638**
A small silver vase, plain oval form with flowers and leaves set to the rim, marked 900 to the base, height 115. \$120
- 639**
A silver tankard, plain cylindrical tapering form, Birmingham 1922, 325gms. \$195
- 640**
Three Edwardian silver and mother of pearl pickle forks, in the form of medieval halberds and pollaxes, plain mother of pearl handles, Birmingham 1900 by Horace Woodward and Co. \$150

641

A heavy silver plate butler's tray, the interior with engraved panels, gadrooned rim and handle to each end, on four bun feet, some wear. 450 x 220. \$200

642

An early 1900s silver and enamel buckle, with machined decoration and turquoise enamel to each edge, Birmingham 1912, 65 x 40. \$120

643

A solid silver ingot. 0.999kg, assay 999 silver. Length 110. \$800

644

Six various silver napkin rings, plain, engraved and embossed. \$120

645

A N.Z. silver napkin ring, plain and of heavy gauge, engraved with initials and marked 'W.H.Nettleship, Wanganui St. Silver'. 50gms. \$125

646

A Thai silver betel nut container, squat circular shape with hinged cover, inset with a small gold rondel; along with another small circular silver box. \$125

647

A large French silver brandy pan, circular with small spout, socket fitted with a turned ebony handle. Total weight 312gms. \$275

648

Two silver decanter tickets, 'Brandy' and 'Gin'. \$100

PERSIAN RUGS

649

A large hand knotted Afghan Chobi rug, pale colours, cream and brown with floral designs. 2500 x 1700. \$350

650

A hand knotted Afghan Kazak runner, typical bold geometric designs in bright colours. 3000 x 740. \$350

651

A hand knotted Pakistan Gabbeh runner, restrained Persian designs on a variegated red ground. 450 x 780. \$250

652

An unusual hand knotted Nepalese Gabbeh rug, black with a flash of yellow. 2150 x 1550. \$350

653

A hand knotted Kazak rug, typical bold geometric designs in colours of mainly red, blue and green. 2220 x 1780. \$350

654

A hand knotted Persian runner, the field with stylised trailing leaf and flower motifs, three border guards, in shades of blue and green on a brick red ground. 3300 x 800. \$350

655

A hand knotted Afghan Chobi runner, pale colours with floral designs. 2450 x 1770. \$250

656

A hand knotted Persian Qashqai sad-

dlebag, geometric designs in bright colours. 880 x 520. \$120

657

An Afghan kilim rug, geometric borders in bright colours on an aubergine ground. 1400 x 1340. \$150

658

A hand knotted Persian Qashqai saddlebag, with diamond medallions. 1300 x 680. \$160

659

A Persian silk rug, the central ground in salmon pink/brown containing five medallions with geometric diamond pattern, surrounded by multiple border guard of repeating diamond motifs. 1750 x 950. \$200

660

An Indian Jaipur runner, the field decoration including three medallions, corner quadrants surrounded by a Herati field and thick border guard. 7830 x 1520. \$200

661

An Iranian rug, the central field filled with four repeating geometric motifs in burnt orange, blue and ivory tones, large border guard with latch key motifs. 1630 x 840. \$200

662

An Afghan Baluchi rug, the central ivory field filled with geometric motifs, in traditional burgundy tones. 1570 x 860. \$200

663

An Iranian Baluchi all wool rug, the central ivory panel with stylised bird motifs surrounded by multiple border guards in traditional burgundy ground. 1550 x 760. \$200

664

An Afghan all wool prayer rug, the field filled with architectural elements including pillars of wisdom and temples, in burnt orange and autumn tones. 1450 x 900. \$200

665

An Iranian all wool runner, the central ivory field containing a single medallion surrounded by bird and floral motifs and border guards. 2000 x 750. \$280

666

A traditional Iranian rug, the ivory central field with rose medallion surrounded by flowers and tigers and a blue border guard. 1650 x 950. \$200

667

A small modern Moroccan rug, the central field containing three rows of six guls with floral and geometric motifs, surrounded by a thick border guard, in pale green and orange tones. 1460 x 850. \$250

668

A fine Afghan runner, the traditional central red field filled with alternating medallions and flowers, surrounded by multiple border guards of geometric motifs. 4870 x 1100. \$800

669

A modern Moroccan carpet, multi coloured and multi patterned, wool on cotton, bought in Fez by the vendor for \$3000. 2780 x 1720. \$800

670

A large modern Moroccan rug, in bright pale blue, ivory, green and red tones, the central field containing two rows of five alternating geometric guls surrounded by multiple border guards. 2630 x 1860. \$850

671

A hand knotted Afghan Andkhai rug, formal floral designs with three border guards in colours of rich dark red, dark blue and old ivory. 2400 x 1800. \$1,000

672

A large hand-knotted Birjand 'Mood' carpet, with a predominately red field, highly decorated in a curvilinear floral design, 3880 x 2950. \$920

673

A fine Persian Tabriz silk hand-knotted rug, the vibrant ivory field with central floral medallion flanked by two smaller medallions and intricate curvilinear floral and tendril motifs, surrounded by quadrants and thick border guards. 2000 x 1500. Some minor discolouration. \$2,400

673A

An Afghan Turkoman, with rows of guls. 1044 x 1770. \$400

673B

A finely hand knotted Persian rug, curvilinear floral decoration, 910 x 1630. \$350

673C

An old Hamadan runner, typical colours and decorations, some wear. 2860 x 1020. \$250

673D

An unusual hand knotted Hamadan, a rare floral design, 1970 x 1350. \$600

673E

A small hand knotted silk rug, intricate floral design in a peach hue. \$500

673F

A large hand knotted Kashan carpet, with profuse floral designs, 2000 x 1350. \$600

FURNITURE

674

A N.Z. colonial kauri side table, serpentine front, thumb moulded edge, raised on four restrained turned legs, in good polish. 900 x 430 x 740. \$220

675

A good N.Z. colonial chip art carved centre table, the circular top with nine variously carved circular forms, within a carved framed border, raised on four pierced slat form legs with lower plain circular shelf. Diameter 890, height 790. See page 32. \$850

676

A good N.Z. colonial starburst inlaid

pedestal table, the circular top with 16 point various N.Z. inlaid timber starburst, on three-way cotton reel supports to a ball form centre with conforming tripod base with lower stretcher. The various timbers noted in pencil to the base of the top. Diameter 590, height 710. See page 32. \$850

677

A quality N.Z. colonial specimen inlaid pedestal table, the variously inlaid N.Z. woods top in a starburst and wagon wheel type design, ebonised border, the later kauri pedestal column on three serpentine form legs, quality restoration and in good polish. Possibly the work of William Norrie. Diameter 615, height 750. See page 32. \$1,850

678

Four contemporary N.Z. made dining chairs by Gary Hunt, 'Brilliant Studio', steel framed, shaped teak backs, leather upholstered seats. \$400

679

A Chinese rosewood low table, the rectangular top raised on square section legs and with slender stretchers forming an apron. 750 x 480 x 310. \$250

680

A rosewood vase table, oblong dished top raised on carved short cabriole legs united by slender stretchers carved as bamboo, fretwork aprons fixed beneath the top edges. 510 x 320 x 120. \$175

681

An Oriental figured rosewood display cabinet, configured as an asymmetrical arrangement of sliding and hinged doored sections above and below open shelves with fretwork galleries framing each open area. 1030 x 320 x 1100. See *inside back cover*. \$850

682

An Oriental figured rosewood display cabinet, configured as a combination of sliding and hinged doored cabinets flanking and surrounding open shelves, each shelf with fretwork galleries. 1720 x 360 x 1060. See *inside back cover*. \$2,500

683

An unusual Chinese rosewood dressing table, the inverse breakfront base with two cupboards flanking two drawers surmounted by a superstructure of a central mirror flanked by narrower mirrored wings, all decoratively inlaid with ivory; along with a matching octagonal stool. 970 x 390 x 1560. See *inside back cover*. \$3,500

684

A carved Oriental rosewood standing screen, carved in low relief with a view of the Guilin mountains with a temple complex and pagoda on its heights; supported on carved scrolling stand. Overall size 1370 x 560 x 2270. \$750

685

A Chinese lacquer and hardstone six panel screen, decorated to one side

with numerous figures in a fenced garden amongst temple buildings, highlighted with raised gilding and bordered with artemisia leaf pattern border, the reverse decorated with various floral designs in gilt on the black ground. Each panel 1670 x 365. See *front cover*. \$2,500

686

A Chinese black lacquer four-fold screen with hardstone and ivory decoration of figures, birds, prunus tree and buildings, the borders with detailed gilding, the reverse with restrained gilded designs of birds and flowers. Width of each panel 460, height 1840. See *front cover*. \$1,600

687

A Chinese hardwood centre table, ornately carved and pierced with prunus blossom, masks, leaves and scrolls, supported on four legs with ball and claw feet and circular platform base, the shaped top with orange marble insert. Some faults. Diameter 570, height 760. See *inside back cover*. \$500

688

An old Indian rosewood inlaid low side table, the rectangular top inlaid with processional figures and animals within a decorative border. 800 x 500 x 420. \$450

689

A large carved teak elephant with child, white painted tusks, fine carved detail. 650 x 300 x 570. \$350

690

A pair of Oriental pottery elephant garden seats, the white glazed elephants with a decorative raised seated platform and side panels in a green glaze with brown trim. Height 500. \$350

691

A vintage camphor wood box, the top, front and sides heavily carved with traditional decoration, brass lock to front, with a plate glass protective top. 1030 x 500 x 630. \$350

692

A Georgian mahogany tilt-top tripod wine table, the plain circular top on pad feet. Some surface marks. Turned column support and pad feet. Diameter 800. \$450

693

A Georgian tilt-top wine table, the plain circular top on a turned column pedestal with tripod base and pad feet. The top with old repair. Diameter 840, height 710. See *inside back cover*. \$450

694

A William IV rosewood revolving piano stool, the pedestal base with lobed column and flared scroll feet, later brocade upholstered seat. \$110

695

A Louis XV style foot stool, the scalloped wooden frame upholstered in a toile de jouy pattern, blue on a

mushroom ground, double piping to base, 420 x 420. \$140

696

A large and impressive pair of cast iron fire dogs, a plain column to the front, a scroll at the top with a central fleur-de-lis. 370 x 620 x 630. \$350

697

A Victorian pine country mule chest, of plain design with two drawers in the base and bracket feet. 1040 x 530 x 660. \$400

698

A Victorian pine storage box, plain design with panelled front, internal candle tray and iron side handles. Lock is faulty. 1140 x 600 x 500. \$250

699

A Victorian pine cabinet of plain country style, with a single drawer above two panelled cupboard doors. 1100 x 520 x 920. \$350

700

A Georgian oak mule chest, with two drawers in base and internal candle tray with two small drawers, ornately carved decoration, arched panels of floral designs and traditional motifs, brass bale handles and ogee bracket feet. 1400 x 550 x 870. \$1,200

701

A French provincial style walnut banquet dining table, the plank top with clenched ends, raised on square section legs with chamfered corners, united by a slender stretcher base with conforming chamfers. 2400 x 100 x 750. See *inside back cover*. \$1,100

702

A set of ten mahogany Lancashire ladderback country dining chairs, (eight singles and two carvers), of traditional design with woven seagrass seats and typical stretcher bases. \$1,000

703

A good quality mahogany refectory table, the solid pegged three-plank top supported on twin well-proportioned vase shaped pedestal supports with broad stepped feet and a central stretcher. 920 x 2140 x 750. \$1,400

704

A set of eight William IV mahogany bar-back dining chairs, plain with turned and fluted front legs and drop-in velvet seats - six singles and a pair of carver chairs with scroll arms. \$850

705

An oak Country refectory dining table, pegged construction, clenched ends, chamfered legs, with drawer to one size, plank top. 2300 x 960 x 800. \$1,200

706

A set of six English oak ladderback country chairs, of traditional Lancashire style with seagrass seats. \$450

708

Set of six vintage Danish Folke Palsson J77 Dining Chairs, original pale grey paint finish, beech construction, stick

backs, stamped makers marks to the base. Note: Palsson was a member of the Danish furniture group FDB, founded in the 1940's with the aim of creating functional design for the people. \$650

709

A Georgian mahogany extension dining table in three sections, oblong shape with rounded corners and supported on slender turned and fluted legs, two 'D-end sections' and two extension leaves, all with brass D-clips. Width 1220, length extended 2900, height 730. \$1,200

710

A harlequin set of six Georgian mahogany Hepplewhite and Chippendale dining chairs, mostly camel backs with ornate splats, all with stretcher bases, chamfered legs and drop-in seats with various covers. \$500

711

A large impressive William IV mahogany tilt-top breakfast table, the almost square top with double thumbnail moulded border and rounded corners on well-proportioned platform base with pedestal support and well-proportioned leaf and scroll feet. 1400 x 1500 x 730. See *inside back cover*. \$750

712

Eight William IV mahogany bar-back dining chairs, with carved back rails, turned front legs and green striped upholstered seats. Six period examples, two with turned and fluted front legs are reproductions. \$650

713

A Georgian oak drop-side dining table, of plain country style, the six-plank top with rule joints supported on double gates and square section legs. 1200 x 1500 extended x 740. \$500

714

A Victorian burr walnut octagonal tilt-top supper table, cross banded with burr elm and supported on elegant cathedral base with leaf and scroll feet. Width 900, height 700. See *inside back cover*. \$350

714A

A good quality walnut side chair, of French style with beautifully carved and pierced cane filled back, upholstered seat with tasselled fringe and ornate stretcher base with hoof feet. \$500

715

A set of four English oak country ladderback dining chairs, with woven seagrass seats and typical stretcher bases. \$250

716

A Victorian walnut canterbury, three divided sections with turned supports and scrolled pierced fretwork walls to the top, the drawer with inlaid decoration, raised on turned

legs with ceramic casters. 570 x 400 x 530. \$350

717

A Victorian mahogany pedestal knee hole desk, three drawers to the top with a further three to each pedestal, on plinth base with casters, replacement leatherette to the top, each drawer has its own key. 1370 x 740 x 770. See *inside back cover*. \$750

718

A Victorian rosewood sideboard collector's cabinet, the marble top with thumb edge moulding, shelves to each side with the central cupboard opening to reveal numerous small collector's drawers, one side with a locked secret compartment, on plinth base with decorative corbels to top and bottom. 1410 x 410 x 1200. See *inside back cover*. \$1,800

719

A rare fine quality Regency piano top secretaire, the top section with a detailed front panel which lifts up and swivels back to reveal small drawers and pigeon holes, the sliding desk drawer with original tooled green leather inserts and fitted interior with original inkwells, supported on four tapering reeded square section legs, the twin lyre shaped stretcher with central padded foot rest. Ornamented with quality brass rondels, scrolls and lion masks and supported on the original casters. 1150 x 560 x 1300. See *inside back cover*. \$2,500

720

An impressive Georgian oak two-stage housekeeper's cupboard of plain country style, the panelled front with mahogany cross banding, the top section with four cupboard doors and internal shelves, the base section with six small drawers and a central two door cupboard, brass bale handles, stepped pediment and bracket feet. Original condition. 1800 x 500 x 1950. See *inside back cover*. \$2,000

721

A good quality English oak breakfront bookcase cabinet of Georgian country style, the top section with four Gothic arched glazed cupboard doors and adjustable shelves, the base with four small drawers and four panelled cupboard doors with fitted shelves, plinth top and base and plain circular brass handles. 1700 x 500 x 2200. See *inside back cover*. \$1,200

722

A Regency mahogany bowfront pedestal sideboard, with three small frieze drawers, the pedestals fitted with a wine cooler drawer and three cupboard doors, spiral twist full column mouldings and large brass lion mask ring handles. Some surface marks. 2030 x 570 x 1120. \$650

723

A late Victorian French style walnut

display sideboard, the fancy back with central shield mirror flanked by two pairs of smaller mirrors, four shaped shelves with carved supports, the base with mirrored doors and open shelves. 1220 x 345 x 2000. \$850

724

A 19thC pine kitchen cabinet, the glazed top with painted interior and scalloped shelves, over a full width drawer and two cupboard doors, on plinth base. 1180 x 470 x 1840. \$650

724A

A vintage glass display cabinet, the fine wood frame with delicate curved pediment, on short cabriole legs and with three glass shelves, 1200 x 480 x 2000. \$650

725

A Victorian mahogany bowfront sideboard, with reeded column mouldings on either side of twin oval panelled cupboard doors, the interior with two shelves. With key. 1340 x 480 x 830. \$400

726

A 19thC. mahogany European housekeeper's cupboard, two cupboard doors open to reveal interior drawers and shelves, over three width drawers with large brass captured ring handles and key hole escutcheons, ornate arched pediment to top, raised on four tapering block feet, 1750 x 570 x 2610. \$1,200

727

A Georgian walnut serpentine side table with cross banding and herringbone stringing, the deep frieze with beaded borders, supported on square section legs with carved detail. Some surface faults. 1720 x 500 x 750. See *inside back cover*. \$600

728

A large ornate cast iron hallstand with green and gold patina of French style, modelled with a young slave girl in chains, the top section modelled with scrolling leaves and flowers and supporting seven lion mask coat hooks, the umbrella stand base with the original two shell shaped drip trays. Width 820, height overall 2100. \$1,600

729

A large and impressive 19thC gilt overmantel mirror, the scrolling pediment framing a porcelain panel with cherubs in the Sèvres manner. 2000 x 1570. See *inside back cover*. \$1,000-\$1,500

729A

An early Victorian mahogany cheval toilet mirror, the plain oblong glass on reeded supports, the base with two bomb drawers and bun feet. Fault on drawer front. 500 x 280 x 680. \$160

730

A Victorian mahogany cheval mirror, the plain glass with arched top supported on scroll shaped supports



444



450



453



456



457



459



460



461



468



462



465



466



470



471



472



473



474



475



487



484



491



492



494



463



506



510



500



508



502



509



503



517



511



513



523



458



519



524



520



526

with serpentine base and well-proportioned scroll feet. Width 900, height 1640. \$500

731

A French style country chandelier, the painted wrought iron branches decorated with leaves and facet cut glass drops, ten light branches with conforming leaf and crystal decorated branches leading to chain and rose. Diameter 760. \$1,000

732

A Murano glass table lamp, the central column holding six wrythen twist light branches with leaf and flower branches, the central column conforming to the base. Some old repairs. Height 810. \$250

733

A vintage blackamoor table lamp, three light branches decorated with leaves attached to his turban. Height 640. \$250

FINE ART

734

Maisie King, (Aboriginal), 'Ngura', acrylic on stretched canvas, signed and entitled on reverse. Note: Maisie King was born in Oodnadatta and paints traditional stories (Tjukurpa) of her family and her special country from many years ago. 1010 x 1010. \$350

735

Robin Kankapankatja, (Aboriginal), untitled dot painting, oil on canvas, named and detailed on reverse. 510 x 1015. \$250

736

Alfred William Duffy, (Aust. 1909-50) 'Study of the sailing ship Loch Etive', oil on board, signed. An iron full-rigged ship built in 1877 by A. & J. Inglis, Glasgow, employed in the Australian wool trade. In original oak frame with gilt slip. 450 x 600. \$350

737

William Henry Buck, (1880-1973) 'Boat Cradle, Perth', watercolour, signed, dated '56. Bio. details verso. 230 x 300. \$150

738

William Henry Buck, (1880-1973) 'St. Nicholas' Church, Bunbery, W.A.', watercolour, signed. Bio. details verso. 180 x 250. \$100

739

Attributed Augustus John, 'Boy Playing with Toy Soldiers' (possibly the artist's son), oil on canvas on board, unsigned. Provenance: Purchased Dunbar Sloane Ltd, 13 April 2011. 145 x 105. See back cover. \$500

740

Robert Ixer, 'Gate to the Cornfield', oil on board, signed, entitled verso. 245 x 195. \$120

741

Banksy, 'Monkey Parliament', offset

lithograph. 530 x 840. Official Banksy lithograph produced for the Bristol Museum exhibition. This lithograph (as all that were produced) is unsigned and un-editioned. \$2,800

741A

Banksy, 'Kissing Coppers' giclee print, initialled and numbered SP 4/5. Signed in the print. 530 x 380. \$500

741B

Shepard Fairey, 'Corporate Violence for Sale' 2011, screen print 355/450, initialled and dated '11. 590 x 435. \$500

742

William Roxby Beverley, (UK 1811-1899) 'A Fishing Boat Driven Onshore, Robin Hood's Bay, Yorkshire', watercolour, signed and dated 1869. 270 x 750. \$350

743

Maud Sherwood, 'Hillside Segovia, Spain', watercolour and ink, signed. Provenance: Purchased McGregor Wright Gallery, Wellington 1981. 395 x 325. See back cover. \$1,400

744

Anthony A. Prout, 'European Market Scene', watercolour, signed. Provenance: Purchased Ngaio Fine Arts, Wellington 2012. 340 x 525. See back cover. \$700

745

Frank Short, 'Drawn by J.M.W. Turner R.A.', etching, signed, detailed in the block including date 1893. 178 x 255. \$110

746

Anthony Stones, (U.K., N.Z. b.1933), Untitled Figure Study with Sandwich Board, watercolour, signed and dated '67. 360 x 270. \$150

747

Arne Asplund, 'Reine' (Norway), oil on canvas, signed, dated 1952 and entitled verso. 365 x 445. \$400

748

Frederick James Aldridge, (U.K. 1850-1933) 'Luggers in Calm Harbour', watercolour, signed and entitled. 250 x 360. \$150

749

Frederick James Aldridge, (UK 1850-1933) 'Bryhton Lugger entering Shoreham Harbour', watercolour, signed and entitled. 250 x 360. \$150

750

Marc Chagall, (1887-1985), 'The Lovers' Sky', print in colours, unsigned, from 'Chagall Lithographé Volume II'. 310 x 235. \$400

751

Pablo (Pau) Roig, 'Circus' (Animal Riders), lithograph, published Paris 1911, monogrammed in the plate. 380 x 325. The artist was a friend and contemporary of Toulouse-Lautrec. \$100

752

Ken Kendall, (1928-2012), 'Ahead by half a head' (two race horses in full

stride), cast bronze, signed and numbered 5/10. See back cover. \$1,800

753

Ken Kendall, head of a young girl, terracotta, signed. Height 245. See back cover. \$500

754

Ken Kendall, 'Mother & Child Reading', bronze, signed and numbered 4/20. Height 210, length 210. \$550

755

Benjamin Aylett Branfill, (1828-99) Le Chapeau Rouge (Audrey Webb at 12½) a portrait, oil on board, signed, dated 1887, entitled. 280 x 240.

Branfill: Lieut. Col. 10th Hussars and Dep. Asst. Q.M. Gen. in Ireland. Arrived Nelson 1880s an early trustee of the Suter Art Gallery. Exhibited Fine Arts Assoc.; NZAFA. Represented in Suter. Webb: daughter of Col. Wm. Holden Webb, C.O. NZ Militia Wgtn Mil Dist. died 1888 aged 13. \$300

755A

After William Hogarth, 'Marriage a la Mode' plate I, oil on canvas. 600 x 900. \$200

756

Trevor Lloyd, 'The Little People of the Mist', etching. 255 x 145. See back cover. \$200

757

Russell M. Jackson, 'White-Eyes', watercolour with white heightening, signed, entitled and dated 1977. 240 x 163. \$200

758

Jon Tootill, 'Domain Entrance...' oil on canvas, signed and dated '87. 550 x 550. \$300

759

Jon Tootill, 'Cypresses Palms at the Winter Gardens' oil on canvas, signed and dated '87. 550 x 550. \$300

760

Aston Greathead, 'Haast Pass, Traveling East', oil on board, signed and dated '66, entitled verso. 485 x 585. See back cover. \$700

761

Keith Blight, two works, 'Bernice's Salon, Inglewood' and 'Sunday Morning, Inglewood', pencil on paper, both signed and entitled. 330 x 450 and 430 x 300. \$240

762

Russell Hollings, 'Slow N Ochre X', oil on linen canvas, signed and detailed on reverse, dated 2008. 695 x 895. See back cover. \$2,200

763

Russell Hollings, 'Earl Grey', mixed media on paper, signed plus signed entitled and dated 1992-93 to reverse. 170 x 170. \$200

764

Russell Hollings, 'Wairoa River - Clevedon', oil on canvas, entitled and dated to reverse. 340 x 450. \$400

- 765**
Russell Hollings, 'The Lake', oil, signed, entitled and dated 1974 to reverse. 120 x 480. \$200
- 766**
Russell Hollings, 'Eeling' Wairoa River, oil on panel, signed; entitled and dated to reverse. 380 x 460. See back cover. \$500
- 767**
Russell Hollings, 'Ihumatao', mixed media, signed and entitled, dated 1984 verso. 160 x 240. \$200
- 768**
Russell Hollings, 'Fish-n-View', oil on canvas, signed, entitled and dated to verso. 660 x 750. \$600
- 769**
Russell Hollings, 'Life Study II', oil sketch, signed and entitled, dated to verso. 570 x 400. See back cover. \$350
- 770**
Jonathan R. White, 'Windball Stream South Westland', oil on canvas, signed and dated 1976 and entitled to verso. 150 x 670. \$200
- 771**
Jonathan R. White, 'Opaheru Valley - Urewera', oil on canvas, signed and dated 1976 and entitled to verso. 490 x 680. \$250
- 772**
Jonathan R. White, 'Broughton Arm - Breaksea Sound Fiordland', oil on canvas, signed and dated 1976, entitled to verso. 700 x 1000. \$400
- 773**
Charles Nathaniel Worsley, 'Hot Pools', watercolour, signed. 170 x 230. \$120
- 774**
Harry Linley Richardson, 'Still Life, Leaves & Berries', oil on board, signed. 380 x 500. \$500
- 775**
Carl T. Laugesen, 'Woodford House', School for Girls, Havelock North, pastel and charcoal on buff paper, signed and dated 25-5-52. 260 x 345. \$200
- 776**
Alan Taylor, 'Taupiri Mt', acrylic on board, signed twice, entitled, dated Oct.06 and detailed on reverse. 590 x 490. See back cover. \$1,000
- 777**
May Gilbert, two works, both Manukau Harbour, one signed, the other entitled and named on the mount. 250 x 350 and 210 x 260. \$200
- 778**
Don Neilson, 'A Frosty Morning Near Rotorua', oil on board, signed, entitled on reverse. 440 x 600. \$260
- 779**
Aston Greathead, 'Arnes Beach, Kaikoura', oil on artist's board, signed and dated '75, entitled and signed on reverse. 270 x 400. \$350
- 780**
Peter J. Wallers, 'The Tukituki River from Patangata, H.B.', oil on board, signed and dated '96, entitled on reverse. 440 x 595. \$300
- 781**
Arthur Thompson, 'Waitakere', watercolour, signed, entitled and dated '73. 405 x 305. \$100
- 782**
James Crowe Richmond, 'Near Mouth of Buller River with Twin Masted Trading Ship', Colonial watercolour, signed and titled on the mount. Site of Westport. \$400
- 783**
Russell Hollings, 'The Bowentown - Still Life', oil on board, signed, entitled verso. 345 x 445. \$400
- 784**
James Crowe Richmond, (1822-1898), 'Anapai Bay', watercolour, entitled, inscribed and dated 1882 or 1883. Provenance: 'Collection Clarke Family, nee Champion nee Atkinson Richmond'. 280 x 390. \$200
- 785**
Gwenyth Richardson, Hauraki Gulf Islands from Howick, watercolour, signed. 360 x 480/. See back cover. \$550
- 786**
Gwenyth Richardson, Rangitoto from garden cliffs, watercolour, signed. 375 x 485. See back cover. \$380
- 787**
Glenda Roberts, 'Yacht Race and Green Hills', gouache, signed. 550 x 710. \$350
- 788**
Keith Patterson, 'Koru Moon 1', mixed media on board, signed and dated '90, entitled on reverse. 750 x 505. \$850
- 789**
Keith Patterson, 'Koru Moon', mixed media on board, signed and dated '90. 750 x 500. \$850
- 790**
Peter Wichman, untitled portrait (Man with Shackled Neck), oil on canvas, signed and dated '97, oil on canvas. 405 x 355. \$175
- 791**
Peter Wichman, 'Open Head III', charcoal, signed. 375 x 325. \$150
- 792**
Jeffrey Harris, 'do you know the way to Golgotha', pencil on paper, signed, inscribed and dated 1982. 240 x 195. \$700
- 793**
Jeffrey Harris, 'I Moved' pencil on paper, signed, entitled & dated 1980. 240 x 195. \$700
- 794**
Clifford Murray, (1919-2000), 'Self Portrait', pencil, signed. 300 x 220. \$125
- 795**
Theo Schoon, Untitled, 'Geothermal Pool Study', vintage gelatin silver print, c.1965. 200 x 198. \$900
- 796**
Theo Schoon, Untitled Geothermal Calcified Study, vintage gelatin silver print, c.1965. 250 x 185. \$900
- 797**
Dean Buchanan, untitled (Alice in Wonderland and Humpty Dumpty), oil on canvas, signed and dated '16. 1740 x 810. \$1,500
- 798**
Russell Hollings, 'The Two Towers', oil on board, signed, entitled verso. 400 x 395. \$1,500
- 799**
A vintage edition of Andy Warhol's 'Interview' magazine (Vol. VIII No. 8, 1978) signed by Warhol in black marker to the cover which features a painting of Jane Holzer executed by artist Richard Bernstein from a photograph by Ara Gallant. 350 x 425. Along with specialist auction house Julien's certificate of authenticity. See back cover. \$2,800

END OF SALE



535



535



536



537



546



547



550



543



539



541



544



571



595



564



583



636



629



625



618



675



676



677



631

Prices realised (hammer price) Cordys 17th October 2017 Antique & Art Auction

LOT	\$	LOT	\$	LOT	\$	LOT	\$	LOT	\$	LOT	\$	LOT	\$	LOT	\$	LOT	\$	LOT	\$
1	\$590	77	\$440	159	\$140	247	\$120	330	\$150	440	\$1,200	553	\$1,500	642	\$240	728	\$2,400		
2	\$220	78	\$300	160	\$310	248	\$160	332	\$200	442	\$240	554	\$1,900	643	\$190	729	\$150		
3	\$80	79	\$200	161	\$220	249	\$100	333	\$150	443	\$200	555	\$400	644	\$190	731	\$275		
4	\$180	80	\$160	162	\$100	250	\$210	334	\$300	444	\$150	556	\$1,900	645	\$425	732	\$325		
5	\$210	81	\$60	163	\$80	251	\$250	335	\$275	446	\$80	557	\$230	646	\$775	734	\$800		
6	\$220	82	\$40	164	\$110	252	\$210	336	\$60	447	\$120	558	\$200	647	\$200	735	\$160		
9	\$700	83	\$150	165	\$450	253	\$150	340	\$150	450	\$520	559	\$290	648	\$300	736	\$850		
10	\$150	84	\$150	166	\$250	254	\$360	342	\$750	452	\$240	560	\$100	650	\$150	737	\$230		
11	\$350	85	\$190	167	\$40	255	\$375	344	\$150	453	\$200	561	\$200	652	\$260	738	\$160		
12	\$120	86	\$80	168	\$170	256	\$280	345	\$180	456	\$320	562	\$150	653	\$140	739	\$825		
14	\$650	87	\$90	169	\$50	257	\$140	346	\$560	457	\$410	563	\$395	655	\$750	740	\$900		
14A	\$80	88	\$140	170	\$140	258	\$100	347	\$400	458	\$190	564	\$120	656	\$525	742	\$150		
15	\$400	89	\$250	172	\$120	259	\$170	348	\$1,100	459	\$220	565	\$80	657	\$600	744	\$2,550		
16	\$450	90	\$100	175	\$100	260	\$170	351	\$275	463	\$5,500	566	\$445	658	\$600	745	\$150		
17	\$290	93	\$150	176	\$110	261	\$230	352	\$650	464	\$4,400	567	\$110	660	\$1,000	746	\$475		
18	\$290	94	\$80	179	\$170	262	\$180	353	\$7,250	469	\$16,500	568	\$385	661	\$700	747	\$160		
19	\$250	95	\$110	180	\$130	263	\$180	354	\$2,100	471	\$6,500	569	\$120	663	\$875	749	\$180		
20	\$650	96	\$150	181	\$70	264	\$110	355	\$13,500	472	\$2,300	570	\$50	664	\$600	750	\$170		
21	\$725	97	\$450	182	\$85	265	\$700	356	\$1,500	474	\$2,600	571	\$50	665	\$140	753	\$230		
22	\$210	98	\$420	184	\$90	266	\$210	361	\$400	475	\$2,300	572	\$110	666	\$410	754	\$300		
23	\$200	99	\$110	185	\$420	267	\$130	362	\$125	476	\$1,100	573	\$140	667	\$800	755	\$850		
24	\$575	100	\$90	188	\$100	268	\$875	364	\$280	477	\$950	574	\$70	668	\$170	756	\$950		
25	\$400	101	\$60	189	\$170	269	\$525	366	\$275	478	\$1,400	575	\$320	669	\$160	758	\$230		
26	\$220	102	\$60	190	\$170	270	\$275	369	\$90	480	\$650	576	\$800	671	\$420	760	\$250		
27	\$3,050	103	\$350	192	\$80	271	\$300	370	\$100	482	\$100	576A	\$120	672	\$400	761	\$210		
28	\$425	104	\$160	194	\$400	272	\$400	378	\$350	483	\$1,400	578	\$1,300	673	\$875	762	\$80		
29	\$300	106	\$260	195	\$230	273	\$230	382	\$290	484	\$450	579	\$1,200	674	\$650	763	\$200		
30	\$280	107	\$110	196	\$120	274	\$300	383	\$120	485	\$220	580	\$950	675	\$650	764	\$200		
31	\$80	108	\$150	197	\$220	275	\$2,850	384	\$200	486	\$400	581	\$900	676	\$1,850	765	\$140		
32	\$40	109	\$90	198	\$140	276	\$100	387	\$375	487	\$460	582	\$450	677	\$1,350	766	\$4,750		
33	\$120	110	\$460	199	\$250	277	\$210	388	\$275	488	\$220	583	\$700	678	\$750	767	\$11,000		
34	\$60	113	\$80	200	\$120	278	\$80	389	\$80	490	\$290	584	\$2,400	679	\$1,150	779	\$2,900		
35	\$210	114	\$140	201	\$150	279	\$280	390	\$100	492	\$200	589	\$760	680	\$500	781	\$3,850		
36	\$120	115	\$110	202	\$380	280	\$600	391	\$95	494	\$160	596	\$70	681	\$1,100	782	\$350		
37	\$120	116	\$130	203	\$800	281	\$500	392	\$75	496	\$485	599	\$160	681A	\$1,400	783	\$400		
38	\$50	117	\$50	204	\$500	282	\$100	393	\$115	497	\$350	600	\$220	682	\$280	784	\$410		
39	\$30	118	\$540	206	\$140	283	\$100	394	\$150	498	\$295	601	\$200	683	\$1,400	785	\$300		
40	\$130	119	\$130	207	\$600	285	\$200	395	\$375	499	\$420	601A	\$40	684	\$750	787	\$120		
41	\$110	120	\$240	208	\$1,650	286	\$210	396	\$275	500	\$320	602	\$150	685	\$700	788	\$160		
42	\$210	121	\$100	209	\$460	287	\$175	397	\$320	501	\$800	603	\$190	686	\$600	789	\$350		
43	\$45	122	\$190	209A	\$475	288	\$75	398	\$500	503	\$210	604	\$200	688	\$1,900	790	\$550		
44	\$220	123	\$180	210	\$250	289	\$140	399	\$5,750	504	\$150	607	\$110	689	\$575	791	\$150		
45	\$140	124	\$220	211	\$275	290	\$160	400	\$425	505	\$100	609	\$155	690	\$1,800	792	\$200		
46	\$80	125	\$1,200	212	\$2,500	291	\$120	401	\$60	506	\$250	610	\$190	691	\$400	793	\$210		
47	\$230	126	\$190	213	\$270	293	\$130	402	\$60	508	\$160	611	\$200	692	\$100	796	\$150		
48	\$110	127	\$140	214	\$450	296	\$140	403	\$60	509	\$170	612	\$100	693	\$325	797	\$200		
49	\$420	128	\$300	215	\$200	297	\$100	404	\$60	510	\$200	613	\$90	694	\$525	798	\$450		
50	\$460	129	\$110	218	\$200	298	\$400	405	\$180	512	\$200	614	\$110	695	\$500	799	\$210		
51	\$280	130	\$700	220	\$70	299	\$145	407	\$180	513	\$180	615	\$400	696	\$1,600	800	\$460		
52	\$30	131	\$350	221	\$2,900	300	\$140	410	\$450	514	\$335	616	\$320	697	\$1,800	801	\$150		
53	\$120	132	\$190	222	\$100	301	\$190	411	\$470	515	\$140	617	\$450	698	\$950	802	\$400		
54	\$260	133	\$190	223	\$285	302	\$190	412	\$3,700	516	\$170	618	\$190	700	\$1,000	803	\$400		
55	\$150	134	\$150	224	\$240	303	\$270	413	\$1,500	517	\$170	619	\$130	701	\$300	805	\$850		
56	\$130	135	\$260	225	\$525	304	\$200	414	\$900	522	\$325	620	\$330	702	\$850	806	\$600		
57	\$70	136	\$500	226	\$325	305	\$240	415	\$325	523	\$190	621	\$100	704	\$900	807	\$260		
58	\$140	137	\$375	227	\$225	306	\$190	416	\$525	524	\$90	622	\$160	705	\$750	809	\$260		
60	\$220	138	\$130	227A	\$525	307	\$290	417	\$1,300	525	\$80	623	\$130	706	\$875	810	\$220		
61	\$500	139	\$200	229	\$650	308	\$100	418	\$210	527	\$70	624	\$70	707	\$1,000	811	\$180		
62	\$1,025	140	\$190	230	\$1,150	309	\$520	419	\$410	528	\$80	625	\$275	708	\$1,150	812	\$260		
63	\$600	141	\$70	231	\$140	310	\$100	420	\$315	532	\$260	626	\$160	709	\$400	813	\$100		
64	\$3,500	142	\$200	233	\$320	311	\$275	423	\$80	534	\$130	627	\$100	710	\$850	814	\$230		
65	\$1,900	143	\$90	234	\$550	312	\$200	424	\$130	536	\$180	628	\$240	711	\$400	815	\$230		
66	\$2,800	144	\$200	235	\$400	313	\$130	427	\$80	538	\$90	629	\$290	713	\$14,000	816	\$350		
67	\$340	145	\$275	236	\$1,350	314	\$140	428	\$210	542	\$400	630	\$675	714	\$1,110	817	\$120		
68	\$350	146	\$280	237	\$100	315	\$230	429	\$130	543	\$1,000	631	\$140	716	\$800	818	\$200		
69	\$330	151	\$100	239	\$1,050	316	\$130	430	\$360	544	\$375	632	\$100	717	\$1,050	819	\$575		
70	\$230	152	\$240	240	\$350	317	\$410	432	\$290	545	\$1,150	633	\$300	718	\$650	820	\$100		
71	\$220	153	\$150	241	\$300	318	\$130	433	\$220	546	\$1,250	635	\$475	719	\$8,000	821	\$375		
72	\$400	154	\$130	242	\$1,600	321	\$140	434	\$270	547	\$250	637	\$220	720	\$7,250	822	\$350		
73	\$240	155	\$80	243	\$4,500	322	\$80	436	\$1,500	548	\$100	638	\$310	723	\$410				
74	\$215	156	\$600	244	\$475	323	\$375	437	\$190	549	\$230	639	\$300	724	\$400				
75	\$100	157	\$400	245	\$80	328	\$175	438	\$1,350	550	\$600	640	\$290	726	\$150				
76	\$210	158	\$100	246	\$110	329	\$110	439	\$130	551	\$170	641	\$400	727	\$300				



Postal Bidding

Ph: (09) 523 1049 / Email: info@cordys.co.nz / www.cordys.co.nz
There is a 17.25% Buyer's Premium (including GST) on the hammer price

Bidding Number		If applicable, otherwise we use your surname
Full Name		
Address		
Email Address		
Phone	Bus.	A/H

Lot #	Brief Description	Bid Amount \$

Please bid on my behalf at the above sale for the following lots. These bids are to be executed as cheaply as permitted by other bids or reserves. Buyers are reminded to get their bids in early to ensure their placement. I agree to comply with the Conditions of Sale as printed in this Catalogue.

SIGNATURE Date: / / 2017

Catalogue Subscription

Please return completed form to Cordy's Auckland office,
 PO Box 74071 Greenlane Auckland 1546

Please forward me the following catalogues,
 (postage within New Zealand included,
 overseas subscribers please add costs as noted):

	Tick	NZ Cost	Australia /Pacific	EUROPE /USA
Antiques, Estate Jewellery, Oriental, Tribal Art, Fine & Applied Art for Monthly Photo Catalogues	<input type="checkbox"/>	\$100	\$150	\$200

All costs noted are in New Zealand dollars. I enclose my cheque payable to John Cordy Ltd for the above ticked catalogues, totalling NZ\$_____.00

If extra catalogues in the categories chosen are produced, these will be sent to you at no extra cost. Overseas subscribers must provide a bank draft in New Zealand dollars to John Cordy Ltd.

Name _____

Address _____

City _____ Country _____

Conditions of Sale

1. The highest bidder to be the purchaser subject to the Auctioneers having the right to refuse the bid of any person. Should any dispute arise as to the biddings, the lot in dispute to be immediately put up for sale again at the preceding bidding, or the Auctioneer may declare the purchaser which will be conclusive.
2. No person shall advance less at a bid than a sum nominated by the Auctioneer and no bid shall be retracted.
3. All lots are sold subject to the right of the seller or his agent to bid or else to impose a guide or reserve price.
4. The purchaser to fill in bidding form before the sale giving details of name, address, bank etc, and to sign such form declaring knowledge of buyers obligations. Immediately after the sale, the purchaser to pay down 10% of the purchase price in part payment and shall pay the balance within five days of the date of sale. All lots to be paid for in full and removed from Cordy's premises same week of sale.
5. The purchaser shall pay to John Cordy Limited (Cordy's) a premium of 15% of the hammer price together with GST on such premium at the current rate.
6. All lots are sold as shown and with all faults, imperfections (visible or not) and errors of description. Neither Cordy's or its vendor are responsible for errors of description or for the genuineness or authenticity of any lot or for any fault or defect in it and make no warranty whatever. Buyers proceed upon their own judgement.
7. Cordy's act as agents and have full discretion to conduct all aspects of the sale and to refuse any bidding or to withdraw any lot or lots from sale without in either case giving any reason.
8. All lots are at the buyers risk from the fall of the hammer and are to be taken away at the buyers expense immediately after the sale. Cordy's will not be responsible if any lot is lost, stolen, damaged or destroyed after the sale. If the lots are not cleared and paid for the same week of the sale they may then be sold immediately either publicly or by private treaty, without notice being given to the defaulter.
9. Upon failure of the purchaser to comply with any of the above conditions, the money deposited in part payment shall be forfeited and the defaulter shall make good any loss arising from the re-sale together with the charges and expenses in respect of both sales.
10. No goods are to be removed while selling is in progress. Receipted invoices must be produced prior to delivery of any lot.
11. The Auctioneers reserve the right to request identification in the case of any purchaser not known to the Auctioneer who pays by cheque and can insist on cash or a bank cheque.
12. Charging to credit cards or payment by overseas cheques will not be accepted as means of payment.
13. No person purchasing an item which falls within the provisions of the Antiquities Act 1975 or the Arms Act 1958 shall be entitled to take possession of the item unless and until such person has produced to Cordy's a licence under the appropriate Act.
14. All lots to be paid for in full and removed from the premises the same week of the sale.
15. The buyer shall be responsible for any removal or storage charges on any lot not taken away the same week of the sale. If for any reason storage is not available at Cordy's premises arrangements will be made to transport and store uncollected goods elsewhere solely at the buyers expense. Cordy's will not be liable to the Purchaser for them in any respect.
16. The Auctioneer cannot be held responsible for any injury or damage to persons or property through attempts to fire firearms which are sold as collectors items only.
17. All electrical goods are sold on the basis of their decorative value only and should be assumed not to be operative. It is essential that prior to any intended use, the electrical system is checked and approved by a qualified electrician.

Important Notice

All lots sold 'as is' in accordance with Paragraph 6 of the Conditions of Sale. Intending buyers should always satisfy themselves as to the condition and description of any lot and their attention is drawn to Paragraph 6.

Postal Bids

Instructions to bid at sales are accepted by Cordy's and are carried out free of charge. Lots will always be bought as favourably as allowed by other such bids, bidding in the saleroom and any reserve. VENDORS are requested to read and are bound by the Conditions

of Sale printed on the reverse side of Cordy's Contract to Sell. PRESALE ESTIMATES are intended as a guide only. Cordy's staff are available during viewing times to assist prospective buyers with estimates and auction room procedures.

Charges and Commissions

1. All lots sold with hammer price between \$1.00 to \$99.00 will be charged at 17% commission.
2. All lots sold with hammer price \$100.00 and over will be charged at 12% commission.
3. Vendors will be charged insurance at the rate of 1% against each lot. GST at the current rate will be charged against expenses.

**A buyers premium of 15% will be charged and GST at the current rate will be charged on the premium.
All lots sold are to be paid in full and removed from Cordy's premises the same week of sale.**

General Information

INSPECTIONS are made and advice given concerning the sale of Antiques and Works of Art free of charge at Cordy's in Auckland, and for a reasonable fee elsewhere.

VALUATIONS for insurance, probate or family division are undertaken on either a quotation basis or a small percentage plus travelling expenses.

IF BUYING FOR EXPORT, please enquire as to GST status of vendors.

INSTRUCTIONS to bid at sales are accepted by Cordy's and carried out free of charge. Lots will always be bought as cheaply as is allowed by the bidding in the saleroom and any reserves imposed.



CORDY'S
A U C K L A N D

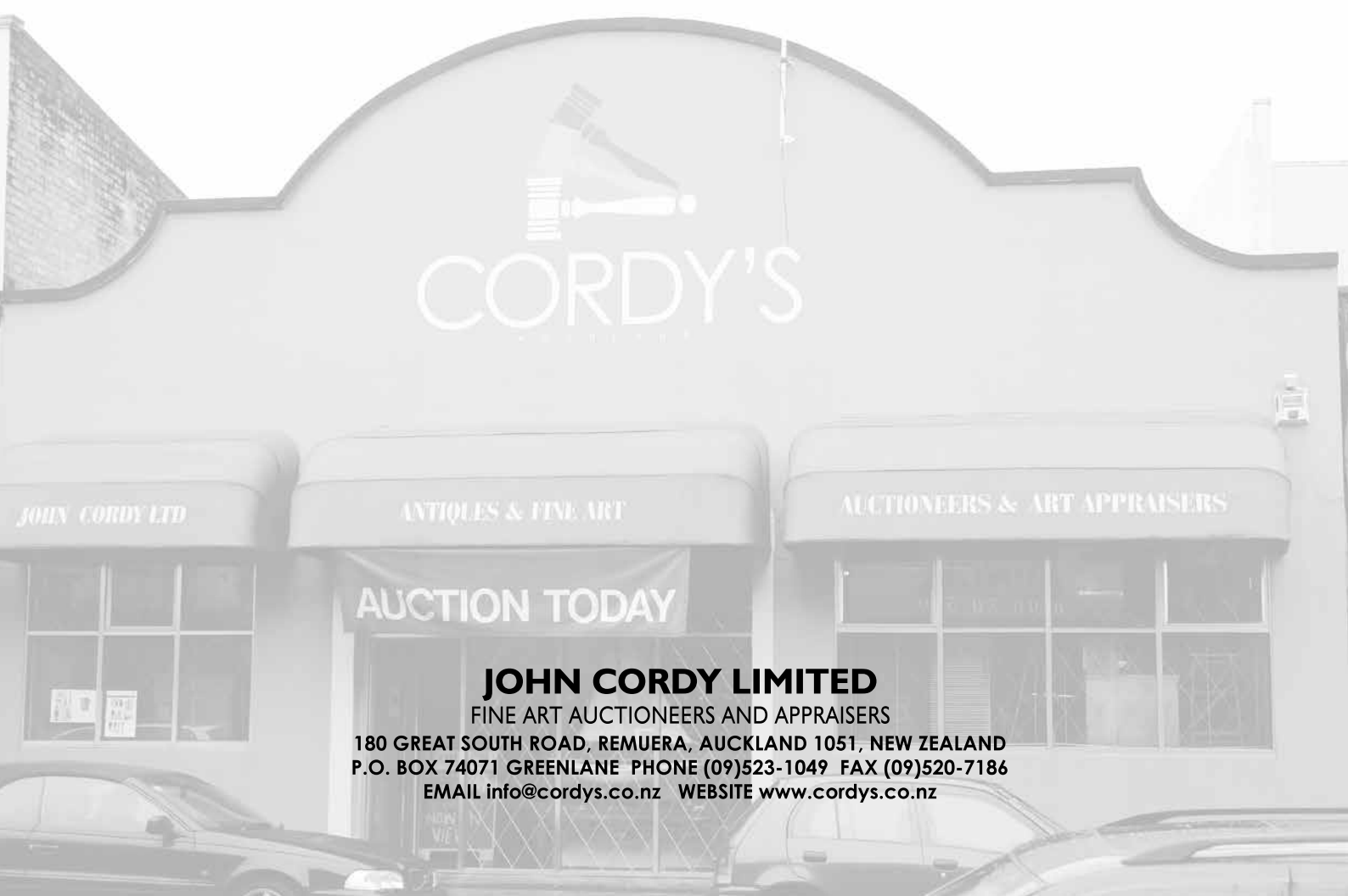
Upcoming Auctions

6th November	Estate/Collectable Auction	View Friday & Monday prior
14th November	Antique & Art Auction	Entries close 20th October
20th November	Estate/Collectable Auction	View Friday & Monday prior
27th November	Estate/Collectable Auction	View Friday & Monday prior
4th December	Estate/Collectable Auction	View Friday & Monday prior
12th December	Antique & Art Auction	Entries close 17th November
18th December	Special Christmas Auction	View Friday & Monday prior

Cordy's closes Friday 22nd at midday

2018

23rd January	Antique & Art Auction	Entries close 13th December
---------------------	----------------------------------	------------------------------------



JOHN CORDY LIMITED

FINE ART AUCTIONEERS AND APPRAISERS

180 GREAT SOUTH ROAD, REMUERA, AUCKLAND 1051, NEW ZEALAND

P.O. BOX 74071 GREENLANE PHONE (09)523-1049 FAX (09)520-7186

EMAIL info@cordys.co.nz WEBSITE www.cordys.co.nz



683



682



681



687



693



701



711



714



717



718



719



727



729



720



721



762



739



766



760



743



752



744



776



753



786



785



756



769



799

