



# ANTIQUE & ART AUCTION

## 27TH MARCH 2018





## A SPECIAL COLLECTION

Cordy's is pleased to offer in this catalogue a selection of items from the fine collection of Sir Neil and Lady Waters. Their association goes back 50 years, with many fond memories, always as a purchaser. Time has come to let others enjoy their Japanese Satsuma, Imari, Arita and Kutani, together with silver and more.



## Recent Auction Highlights



An Art Deco style 18ct. white gold diamond and pink sapphire ring. Achieved \$2,800



Edmund Blair Leighton (UK 1853-1922) Untitled (Mortality and Remembrance). Achieved \$2,500



An impressive modern lady's 18ct. white gold and diamond bracelet. Achieved \$16,500



A pair of Chinese huanghuali chairs. Achieved \$40,000



Robin White (b.1946), 'Florence and Harbour Cone'. Achieved \$7,500



An estate white gold ladies 2.26ct diamond solitaire ring. Achieved \$15,000



A pair of Crown Lynn Wharehau Maori Art 'Moko' book-ends. Achieved \$3,500



A Moorcroft McIntyre 'Pansy' double-handled vase. Achieved \$4,500



An outstanding white gold, star sapphire and diamond pendant. Achieved \$8,000



An impressive large Len Castle branch pot. Achieved \$5,000



An impressive Victorian carved oak table clock. Achieved \$8,350



A large and impressive early 19thC Chinese famille rose lidded jar. Achieved \$7,250



A quality large Roy Cowan (CNZM MBE 1918-2006) salt glazed floor pot. Achieved \$12,000



Don Binney, Pipiwharauroa. Achieved \$90,000



An impressive 18ct gold, diamond and tourmaline dress ring. Achieved \$5,500



A Chinese silver tea set and accompanying tray. Achieved \$4,000



A quality 19thC French walnut and ormolu bureau plat. Achieved \$14,000



After Andrea del Verrocchio (Ital. c.1435-1488), 19thC copy of the Equestrian statue of Bartolomeo Colleoni. Achieved \$5,600

Invest in  
the future



www.antiquesaregreen.org

recycle the past.

NOTE: Hammer prices shown excluding premium.



Antique & Art Catalogue

Cordys are delighted to offer a very exciting collection this month from many private vendors and estates. We have owls, a money box collection, copper kitchenalia, taxidermy, medical, medals, bronzes, postcards, militaria, Pacific and NZ artefacts and historical items, an impressive collection of N.Z. pottery – Brickell, Castle, Wharetana, etc., Staffordshire, Derby, Worcester, Moorcroft, an extraordinary Oriental section with fine Satsuma, carvings, tsuba, Kutani, bronzes, famille rose, jade, special armorial export ashettes. The second session starts at 5pm with jewellery: gold bangles, laden charm bracelet, Pandora, Victorian, Edwardian, contemporary diamond and other precious stone rings, necklaces, earrings, diamond and white gold Longines wristwatch, gold pocket watches, carriage clocks, Jaeger-le Coultre clock, the silver has a selection of photo frames, cutlery, tea sets, tea caddies, candlesticks, kilim cushions, Chinese, Persian, Caucasian and Turkish rugs are among many in the rug section, furniture includes Chinese, French, Victorian, contemporary tables, chairs, bookcases, Art Nouveau display cabinet, dining tables, military chest, lamps, mirrors, longcase clocks. The fine art section has a collection of 17th Century pen and wash works, seven corrugated iron pieces from Geoff Thomson, W.G. Baker, Ben Webb, Don Binney and many more. This auction is a must view..

### Tuesday 27<sup>th</sup> March 2018 at 9.30am

Miscellaneous	1 - 120
Militaria	121 - 130
Artefacts , Tribal & NZ Historical	131 - 161
N.Z. Studio Art	162 - 225
Crystal & Glass	226 - 230
Modern Movement	231 - 241
China & Porcelain	242 - 275
Oriental	276 - 424

### Tuesday 27<sup>th</sup> March 2018 at 5.00pm

Jewellery	430 - 532
Clocks & Watches	533 - 549
Silver	550 - 619
Persian Rugs	620 - 648
Furniture	649 - 714
Fine Art	715 - 820

### The sale may be viewed at the following times:

Friday 23rd March	9.00am - 5.00pm
Sunday 25th March	11.00am - 3.00pm
Monday 26th March	9.00am - 5.00pm

### FRONT COVER:



### CATALOGUES \$12

A 15% percent buyers premium applies to this auction  
plus G.S.T. on premium = all up 17.25%  
Catalogue also online at [www.cordys.co.nz](http://www.cordys.co.nz).

## JOHN CORDY LIMITED

FINE ART AUCTIONEERS AND APPRAISERS

180 Great South Road, Remuera, Auckland 1051, New Zealand

P.O. Box 74071 Greenlane Phone (09)523-1049

Email [info@cordys.co.nz](mailto:info@cordys.co.nz) Website [www.cordys.co.nz](http://www.cordys.co.nz)



# The Catalogue

The figures given along side each lot are guide prices only.  
Measurements throughout are given in millimetres width x depth x height.  
This auction includes some entries from vendors "In Trade".

TUESDAY 27<sup>TH</sup> MARCH 2018

1<sup>ST</sup> SESSION AT 9.30AM

## MISCELLANEOUS

**1**  
**A late 19thC European china vase modelled as an owl**, perched on a sculpted log, the vase opening behind its head, naturalistically and finely painted. Height 190. \$160

**2**  
**A carved Black Forest type owl wall-mounted hook**, the perched owl with glass eyes, a hook below the branch perch, dark painted highlights. Length 285. \$160

**3**  
**An early 20thC novelty owl gong**, the wall mounted plastic owl head with glass eyes supporting the hammer, string suspension to the brass gong. Note the wood knocker 'is from Holly Tree'. Diameter of owl section 125. See page 5. \$200

**4**  
**A classical bronze sculpted ram's head**, his curling horns and head finely detailed, mounted on a rimu board. Width 210. See page 5. \$220

**5**  
**A pair of brass Victorian style lady's boots**, engraved and cast detail. Height 225. \$120

**6**  
**A vintage cast iron money box**, 'City Bank'. 75 x 50 x 100. \$120

**7**  
**A vintage cast iron money box**, a honey bear with a hive in front of a garden house, registration mark to base. 100 x 180. See page 5. \$150

**8**  
**A vintage cast iron nickel plated money bank**, in the form of a bank building. 95 x 75 x 130. \$150

**9**  
**A vintage cast iron money box in the form of a Victorian post box**, registration mark to base. Height 170. \$150

**10**  
**A vintage cast iron money bank**, in the form of the Blackpool Tower. 105 x 70 x 190. See page 5. \$150

**11**  
**A cast iron money box**, in the form of a bank building, with iridescent green and gold paint finish. 90 x 70 x 140. \$120

**12**  
**A vintage cast iron money box in the form of a bank building**, remains of silver paint. 100 x 60 x 120. \$150

**13**  
**A vintage cast iron money box**, Lichfield Cathedral. 80 x 50 x 160. See page 5. \$150

**14**  
**A 1880's vintage black boy money box**, made in the U.S. by Shepard Hardware, with rare blue jacket with original base plate. See page 5. \$300

**15**  
**A 1870's J & E Stevens Co. American trick money box**, 'I always did 'Spise a Mule', scarce yellow base with original twist trap. Mechanism does require some attention. Length 250. See page 5. \$150

**16**  
**Two early 1900s N.Z. Post money boxes**, one in the form of a suitcase, the other with rounded ends, no keys. \$80

**17**  
**An antique Simon & Halbig 'Dolly Face' doll**, glass eyes, open mouth with pierced ears and composition jointed body, replacement wig however supplied with original. Height 730. \$200

**18**  
**Three vintage boxed sets of 'Victorian Toy Soldiers'**, includes 'French Chasseur a Pied', 'Turkish Guards' and 'Prussian Infantry', all in fitted named boxes. \$140

**19**  
**A 19thC Indian papier mâché tray**, circular, decorated with panels including depictions of religious figures, princes, warriors and demons. Diameter 410. \$100

**20**  
**A vintage papier-mâché tray**, with scalloped rim, painted in florals with a bird in the manner of Jennings & Bettridge. Some chipping. 620 x 500. \$220

**21**  
**An Edwardian Sheraton Revival tray**, of kidney shape with brass side handles, scalloped gallery and inlaid shell to the centre, some damage. 590 x 380. \$120

**22**  
**A large Victorian copper kettle**, fixed handle and acorn finial. \$150

**23**  
**A Victorian copper fish kettle**, fixed brass side handles, initials to lid and front, tin lining. 440 x 170. See page 5. \$250

**24**  
**A heavy Victorian copper roasting pan**, riveted side handles, with original tin lining. 480 x 300 x 110. See page 5. \$250

**25**  
**A large heavy Victorian copper jam pan**, with riveted brass side handles. Diameter 390. See page 5. \$250

**26**  
**A large heavy Victorian copper jam pan**, with decorative riveted brass side handles. Diameter 430. \$250

**27**  
**A set of cast iron and brass shop scales**, with original brass pans and four flat brass weights, 7lb to 1lb, made by the Libra Scale Company, England. \$200

**28**  
**Five brass Avery weights**, bell shape, 7lb to 1/2lb. \$150

**29**  
**An antique set of balance scales**, on brass feet with a drawer to the front, with trays. 290 x 140 x 300. \$130

**30**  
**A vintage 'Olivia' brand French metal cheese grater**. 175 x 320. \$120

**31**  
**An 18th/19thC European style ormolu mounted porcelain bowl**, polychrome enamel with elaborate scrolling tendrils highlight with flowers and fruit, the ormolu mounts of French style, scrolling handles, top rim and raised plinth base. Diameter 370. \$600

**32**  
**A Dutch laminated and turned wood bucket**, with brass fittings and insert, the timbers of alternating light and dark tones and with horizontal bands with an ebonised finish. Height 390. See page 32. \$375

**33**  
**A late 1800s American kerosene lamp**, pierced brass base with a large ovoid glass stand painted with lilies and hydrangeas, with matching shade, a large brass oil reservoir sits in the glass base, with chimney. Height 730. \$450

**34**  
**A late 1800s German Westerwald salt glazed kerosene lamp**, the black ceramic base supporting a blue glazed stand lavishly embossed with mythical figures, masks and florals, with china oil reservoir, etched glass shade and chimney. Height 660. \$350

**35**  
**A Victorian Vaseline glass kerosene lamp**, the metal pyramid shape base with pierced and floral decoration, the oil reservoir of primrose Vaseline glass decorated with flowers, etched glass shade and chimney. Height 590. \$350

**36**  
**A Victorian cast iron and cranberry kerosene lamp**, the stepped base supporting an Ionic column, with cranberry glass oil reservoir, etched shade and chimney. Height 660. \$250

**37**  
**A pear shaped fruitwood tea caddy in the antique manner**, the hinged lid with a short carved ivory stalk section as the finial. Height 180. \$120

**38**  
**A Regency rosewood tea caddy**, plain sarcophagus form, mother-of-pearl inlaid escutcheon, vacant interior. 285 x 135 x 155. \$180

**39**  
**A Victorian amboyna wood writing slope**, fitted interior. With key. 300 x 215 x 135. \$200

**40**  
**A c.1900 Indian carved ebony desk standish**, elaborately fitted, the central removable box with recumbent elephant to the hinged lid, flanked by a pair of lidded urn form pots as lids for shallow boxes, a removable scone to each corner, pen rests and single



frieze drawer, scrolling base. 350 x 260 x 245. \$220

**41 A Victorian black lacquer jewel chest,** floral painted and elaborate mother-of-pearl inlay with gilt enrichments, the hinged lid enclosing a fitted section, the two doors enclosing three drawers, plinth base. With key. 245 x 175 x 275. See page 5. \$280

**42 A Regency rosewood inlaid tea caddy,** of sarcophagus form, fine satinwood inlaid panels with elaborate scrolling frame, captured ring handles, the interior with two lidded compartments. See page 5. \$240

**43 A small 19thC jewel box,** cube form with steel studded decoration, swing handle to the top, the deep blue velvet lined interior with removable sectional tray. 90 x 90 x 95. \$100

**44 A Regency mahogany tea caddy,** sarcophagus form, the hinged lid enclosing two lidded compartments. \$160

**45 A Victorian mahogany lady's compendium,** the lid lifts to reveal various compartments, some padded, two small doors to the front reveal three drawers, the bottom drawer pulls out to reveal a small writing slope, with tooled leather decoration to the interior doors, the exterior with inlaid mother-of-pearl. 330 x 250 x 380. See page 5. \$450

**46 A mottled puriri timber box,** in the form of stacked books, with complex concealed opening sequence. 185 x 140 x 125. \$150

**47 A Victorian rosewood and birds-eye maple jewel/work box,** cross-banded, restrained inlay of a prancing horse and a pair of leopards, the interior with removable sectional tray. 333 x 255 x 143. \$180

**48 A silver North Otago A & P medal,** presented in 1879 to E.E. Harding for 'Best Game Cock and Hen', in box, maker J. Moore. F. See page 5. \$650

**49 A bronze 1950 Empire Games competitor's medal,** maker's mark 'G.W.'. \$100

**50 Seven Victorian 'Attendance' medals,** presented for school and Sunday school attendance. \$100

**51 A collection of Masonic regalia and jewels,** etc., including a velvet cap with a Maltese cross badge. \$100

**52 A large polar bear rug,** good healthy plush coat, with head in open snarling position and claws to feet. 2070 from paw to paw x 2400 head to tail. See page 5. \$5,000

**53 A vintage adult brown bear rug with mounted head,** modelled with open

mouth, most claws present. Showing some signs of age. 2300 x 2180. \$1,200

**54 A vintage taxidermy turtle,** the shell in good condition, unpolished, the head extended. Length 530. See page 5. \$350

**55 A small turtle shell,** the plates with good markings. 360 x 480. \$180

**56 A vintage turtle shell,** plates with good marking but some damage. 400 x 480. \$180

**57 A vintage full mount turtle,** modelled with head raised, good condition. Length 390. \$180

**58 A taxidermy ten pointer stag's head trophy,** mounted to a kauri shield. \$900

**59 A rare taxidermy two-headed lamb shoulder mount,** wood shield backing. Provenance: Ex. the iconic Wagner Museum, Houhora, Northland. Note: also used as the subject of a Gavin Hipkins photograph 'Houhora (Sheep) 2003'. Depth from shield 280. See page 5. \$1,500

**60 A vintage taxidermy kangaroo head,** mounted on a wooden shield. Depth from shield 185. See page 5. \$220

**61 A vintage taxidermy runt piglet,** brown toned with black spots, the tail requiring attention, mounted on wood plinth. Length 320. See page 5. \$360

**62 A vintage taxidermy full body mount wallaby,** its long tail outstretched, its ears with some damage and covered with red knitted wool. Height 620. See page 5. \$280

**63 A vintage taxidermy green parrot,** mounted upon a branch section with wings semi-outstretched. Height 365. \$180

**64 A taxidermy full body model of a calf,** positioned lying down with front legs bent, soft brown tones with pale highlights, glass eyes. Length 640. See page 5. \$400

**65 Two quality pairs of vintage shark jaws,** wired together for display. Width 230 and 330. \$240

**66 Six various vintage surgical tools,** includes a mouth widener, 'lower molar' extractor, skull chisel and hammer, cutter, etc. \$300

**67 A selection of nine vintage surgical tools,** includes a triple pronged long clamp, hammer, arrow headed reverse pliers, clamps, etc. \$280

**68 A selection of vintage obstetric tools,** includes clamps, etc. See page 8. \$300

**69 A c.1920 American Frohse Anatomical Chart,** 'Plate No. 7', with five different 'Figure' studies including 'Median Section Through Head', 'The Mouth Cavity',

etc. Note: With two rods attached for display as a roller. Paper on linen backing. 1820 x 1100. See page 8. \$650

**70 An early 20thC 'Winslow Health & Hygiene Series' medical display chart,** detailing 'Excess Mortality Due to Alcohol', 'Retardation Due to Alcohol', 'The Nervous System', etc., printed on paper sheet backed on linen mounted on two rods to allow for rolling. 1700 x 1100. See page 8. \$750

**71 An early 20thC 'Frohse Life Size Anatomical Chart No. XVII. The Circulatory System',** detailing 128 points on a life size human body, with wooden rods to allow for rolling. 1900 x 800. \$650

**72 An early 20thC nearly life size 'American Frohse Anatomical' chart,** Plate No. 2, showing the muscles of the human body in 'Front View' and 'Back View', dated 1918, published by A.J. Nystrom & Co. 1600 x 1040, framed under glass. See page 8. \$1,000

**72A A vintage Clay-Adams Inc. of New York anatomical half model of a human head,** detailing muscles, veins, arteries and nerves, etc., mounted on a circular wood base with maker's label detailing 'Made in Japan'. Height 275. See page 8. \$360

**73 A rare set of four lithographs after Charles Le Brun from his 'System on Physiognomy',** illustrating resemblance between man and beasts, printed by Engelmann, Graf, Coindet & Co., London c.1827. Each 520 x 385. See page 8. \$1,200

**74 A set of four German hand coloured ornithological lithographs,** from Oken's General Natural History, one plate showing the Waldvogel (Dodo) and a kiwi. Each 315 x 250. \$500

**75 A set of six 19thC ink studies of dogs,** drawn in brown-black ink on silk. Each approx. 85 x 100. \$500

**76 28 pen and ink drawings,** some with watercolour tinting (book illustrations), unknown 19thC artist, initialled WWD and dated '99, illustrations of characters and scenes based on the books of Gargantua and Pantagruel by François Rabelais. Unframed, various sizes. \$100

**77 David Deuchar (Scottish 1743-1808),** Beggar Woman leaning on a stick, after Rembrandt. Ref: The New Hollstein, vol. text 2, no. 229, copy D. From a 'Collection of etchings after the most eminent masters of the Dutch and Flemish schools' made for presentation to his friends. 75 x 52. \$100

**78 David Deuchar,** Beggar seated on a bank, after Rembrandt. Ref: The New Hollstein vol. text 1, nr. 50, copy E. From a 'Collection of etchings after the most eminent masters of the Dutch and Flem-

ish schools' made for presentation to his friends. 75 x 52. In frame along with ten etchings after Holstein, et al. \$200

79

**A pair of small 1830's hunting water-colours**, details verso, framed under glass. \$150

79A

**A pair of hand painted enamel portrait miniatures**, one of Juliette Récamier an early 19thC French socialite, the other of Napoleon II after the portrait by Leopold Bucher, both with gilt slips and frames. See page 8. \$450

80

**A 19thC European rosewood framed relief plaque**, decorated with a woman and four children within an extensive landscape. Diameter approx. 260. \$110

81

**Three old frames**, suitable for miniature portraits, one of birds-eye maple and two ebonised. \$140

82

**A 19thC watercolour painted with an elaborate coat of arms**, 'N Ne Cede Malis', further detailed and dated 1863. 275 x 240. \$100

83

**An 1859 Italian military subscription notice**, printed in black, gilt framed under glass. The notice 475 x 355. \$150

84

**A white metal patinated sculpture of a naked woman**, incised 'Jonathan Breen'. Modelled in a yoga position, housed in glazed cabinet. Labelled 'Breen's seminal work 'Closure' marked his departure...' \$300

85

**Pair of large 19thC hollow bronzed spelter figures**, Benvenuto Cellini and Paolo Veronese, after Albert Carrier Belleuse (1824-1887), both standing on ebonised wooden plinths. Height 600 ea. Note: Benvenuto Cellini (1500-1571) was an Italian goldsmith, sculptor, draftsman, soldier, musician, and artist who was one of the most important artists of Mannerism. He is remembered for his skill in making pieces such as the Cellini Salt Cellar and Perseus with the Head of Medusa. Paolo Veronese (1528-1588), was an Italian Renaissance painter. See page 8. \$1,200

86

**A small bronze figure of a Muay Thai fighter**, the figure with tattooed sides, dressed in a loincloth, balances with one knee raised in fighting stance. On wooden plinth base. Height 165. See page 8. \$180

87

**An early 20thC bronzed metal rooster and hen**, finely detailed, the rooster with tail raised, the hen as if pecking. Heights 200 and 100. \$110

88

**Alfred Dubucand bronze sculpture of a bloodhound**, 'Chien de chasse Blood-hout ou Saint Hube', signature cast to the base, details stamped to reverse. 250 x 100 x 185. See page 8. \$450

90

**A 1930s/40s autograph album**, includes the inscription and signature from Sir

Bernard Freiberg dated Rotorua 26th Nov. '46, enclosed in an envelope detailed 'Photo of Dad in One of His Rooms at the Govt Main Bath Building. Rotorua', the photo included, further detail including 'Both These Men came to Dad for Treatment on the Same Day 27.11.46'. \$100

91

**A collection of signed 1930s Hollywood movie star photos**, with original Studio envelopes, including Bing Crosby, Boris Karloff and Gary Cooper and Jane Withers. Some signed, others stamped, all envelopes to one Auckland address, other items include a typed letter from Bing Crosby, postcard responses to requests, list of studio addresses, and other items. \$100

92

**An album of over 1200 Great Britain stamps**, from 1841 to more modern issues. \$120

93

**Three albums of Chinese and other Asian stamps**, includes Hong Kong, Vietnam, Indonesia and Japan. \$220

94

**Charles Upham's Rollop camera**, the 35mm T L R model made by the German company Lipca, c.late 1950s with original leather case, the red velvet interior named 'C. Upham'. Provenance: Purchased by our vendor from an Upham family member. \$110

95

**A collection of early 20thC New Zealand postcards**, including Auckland suburbs, New Zealand locations, Christmas greetings and the New Zealand Football Team 1905. \$100

96

**A collection of 200 N.Z. postcards**, many of early Auckland as well as around N.Z. and Maori subjects. \$350

97

**A rare Jean Schoenner 16½" German magic lantern**, tin body, chromed adjustable lens housing, tall chimney, named to plaque on front. In vintage fitted box with numerous slides including a wood framed manual wind kaleidoscopic example. Note: this 'Laterna Magica' was used for demonstrations in schools and universities with pupils being taught the world picture from a German perspective. See page 8. \$1,500

98

**A vintage tin and chrome magic lantern**, kerosene lit, with 10 glass slides including six showing the devastation of war in France. \$160

99

**A late Victorian leather cased top hat**, beaver type skin, showing some age. \$180

100

**A late 19thC Selfridge of London 'Extra Quality' Sombrerera gentleman's hat**, with a black encircling band with bow, printed details to the interior, the chin strap requiring attention. \$140

101

**A late 19thC 'Centaur II', 'Extra Quality' gentleman's Sombrerera type hat**,

printed details to the interior 'Made in England Expressly for J. Ballantyne & Co., N.Z.'. \$140

102

**A large impressive oblong white tropical coral specimen**, of boat form and in excellent condition. With metal display stand. Length 290. \$380

103

**An early 20thC Venetian carved cameo shell lamp**, carved heart form panels including an erupting Mt Vesuvius and the Bay of Naples, chrome fitting on turned ebonised base. Height overall 225. \$110

104

**A 17thC French carved walnut statue of the evangelist St John**, depicted with an eagle at his feet and tablet to his right hand. with Dutch purchase receipt dated 1979. Height 245. See page 8. \$550

105

**A quality 17thC Flemish carved ivory Christ figure**, depicted crucified, exceptional detail and old patina. Minor losses. With Dutch purchase receipt dated 1976. Length 240. \$550

106

**An old European carved wood ceremonial pouring vessel**, the oval tapered bowl with protruding handle and spout, scroll detail, geometric and fluted bands to the bowl, the spout with brass tube lining, old patina. 335 x 130 x 80. \$110

107

**An old fishing creel and a 3½" 'Intrepid Rimfly' rod and reel**, the finely made basket with opening lid and leather strap. \$150

108

**A late Victorian large brown leather fly wallet with flies**, line tooled detail, over 200 small flies included, good finish. \$120

109

**A vintage carved and painted duck decoy**, the mallard with glass eyes. Length 310. See front cover. \$100

110

**A 13" wooden spoon bill (shoveller) hen decoy**, c.1940s, with early type tack eyes and belly weight insert. \$160

111

**A Magnum sized wooden duck decoy**, handmade from a single block of beautifully grained redwood, the swivelling head with tack eyes, c.1950s. Length 400. \$200

112

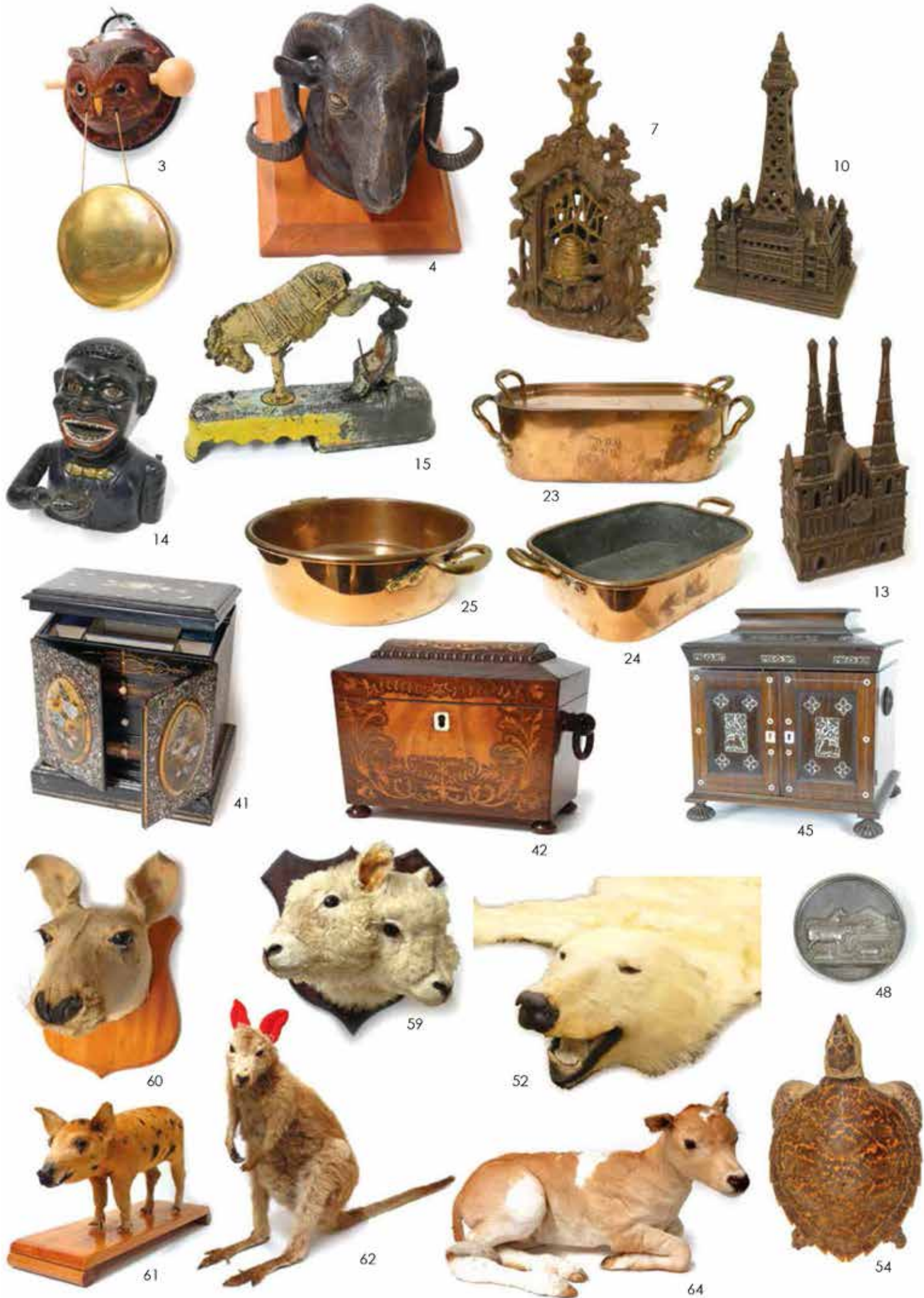
**Four Victorian Pratt pot lids**, some repairs and chips. Bear baiting etc. \$140

113

**A 19thC highly decorative woven fibre case enclosing a Chinese enamelled teapot**, the double clam shell form case with wicker frame and woven fibre ribs, quilted silk interior. \$120

114

**A brass single draw telescope by Thomas Peacock**, Auckland, with 22" main tube and 17" extension tube, 2" objective lens with protector slide. Fitted with a gimbal mount. Peacock, a Glaswegian optician and instrument maker emigrated to Auckland in 1862 and operated from Shortland Street un-



til election to the Council subsequently becoming Mayor and an MP. \$225

115

**A small bronze figure sculpture**, of a youthful herald trumpeter. Raised on granite plinth. Monogrammed Z? Height 195. \$200

116

**A pair of sculptural bookends modelled as silver-plated geese**, signed T. Ro-chard, raised on black marble bases. Height 200. \$150

117

**An Art Deco spelter figure of a hockey player**, the gent standing on one foot holding his stick, on alabaster block base. Height 215. \$140

118

**An old brass ship's porthole window**, with remains of some paint. Diameter 500. \$220

119

**A vintage Dunhill silver plate lighter**, the base with embossed marks and patent no. 390107, plain unengraved body. Height 54. \$250

120

**A carved Indian ivory hand mirror**, the profusely carved frame decorated with animals, gods and goddesses, small oval bevelled glass mirror to the centre. 90 x 270. \$250

## MILITARIA

121

**A WWI service medal and a George V Volunteer Long Service Medal**, both with ribbons, presented to H.D. Parrott, Rangoon. Together with his watch. \$150

122

**A British Rifle League skull badge**, a silver and enamel Society of Miniature Rifle Clubs badge and a Teddy Tail League badge. \$100

123

**A British War Medal and Victory medal**, to Capt. J. Scott; along with a Defence Medal. \$120

124

**A scarce WW1 9ct. tribute medal**, awarded to the next of kin of Lt. G.M. Don of Windsor, Oamaru. Suspended from a red, white and blue cotton ribbon, the medal unusually features a black enamel border around the 33rd Reinforcements badge. Don, a farmer, died of wounds on 25/8/1918. Maker marked 'Harris'. See page 8. \$900

125

**A Scottish skean dhu**, with a carved ebony handle, cairngorm mounted pommel and conforming silver mounted ferrule and scabbard. Birmingham 1935 by Joseph Cook & Son. Length 185. See page 8. \$175

126

**A socket bayonet for use with the .75 caliber India Pattern Brown Bess flint-lock musket**, Napoleonic Wars period, c.1815. Length 540. \$100

127

**A WWI officer's Sam Browne belt**. \$100

128

**A brass and copper powder flask**, the

body with moulded flutings, fitted with an adjustable delivery nozzle. Length 185. \$120

129

**An early 1900 embroidered hatchment for the Wiltshire Regiment**, highly colourful, featuring their flags, regimental colours and engagements, including Sevastopol, New Zealand, South Africa, etc. 570 x 510. \$150

130

**A vintage Indonesian badik knife and scabbard**, horn handle, straight sided damascene blade, decorative silver fittings, with scabbard. Length overall 490. See page 8. \$160

## — ARTEFACTS, TRIBAL & NZ — HISTORICAL

131

**An old Fijian tabua**, with rich cream patina, re-drilled tip hole with fixed plaited coir cord. Length 150. \$400

132

**An old Fijian tabua**, with brown-cream patina, fixed plaited sennit cord. Length 145. \$400

133

**An old Fijian tabua (sperm whale tooth)**, fine holes to either end, with original turmeric staining, Length 115. \$180

134

**An old woven fibre PNG yam mask**, concentric eyes. Height 430. \$120

135

**A PNG ceremonial collar**, woven shells with an outer edge of white feathers, with metal stand. 400 x 600. \$130

136

**A PNG ceremonial collar**, similar to above but with an outer edge of iridescent blue/black feathers, with metal stand. 600 x 400. \$130

137

**Two giant clam shell currency rings**, set onto metal stands. 220 x 300 and 130 x 200. \$250

138

**Three PNG 'Eye of Shiva' cat's eye shells**, mounted onto metal stands. Height 280, 210, 180. \$100

139

**A Trobriand hardwood stool**, the disc form top and base with a stylised figure between, traditional lineal and notch carved decoration, some repair. Height 480. \$180

140

**A Benin bronze sculpture of three zoomorphic figures**, riding on the back of a stylised elephant. Length 225 \$

141

**A small solid carved ivory bust of an African woman**. Height 120. \$175

141A

**A walking stick made of shark vertebrae**, with an ivory handle carved with Maori designs. The 65 graduated vertebrae interspersed by horn discs, the silver ferrule embossed with a koruru mask head, the handle with tiki figures on a notch patterned ground. Provenance: Bequeathed to our vendor from his aunt who died without issue.

Oral history has it made by a Scottish marine engineer named McLean of Akaroa, Banks Peninsula. Length 930. See page 8. \$2,000

142

**A small bowenite hei tiki**, modelled with hands to thighs, ring eyes with red wax insert. Height 60. \$125

143

**A large and impressive Charlie Raponi Wilson nephrite hei tiki**, of Marsden jade showing good pale inclusions, the right hand to the chest, the left to the left thigh, the head tilted, the serrated pawa inset eyes with red sealing wax detail of unusually large proportions. Length 158. Note: Charles Raponi Wilson has been carving since the 1960s and is recognised as a leading carver of hei tiki, drawing inspiration from ancestral taonga. In 2009 he was commissioned by N.Z. Post along with other leading N.Z. artists to carve a hei tiki to feature on its annual Matariki stamp series. In 2010 his design was selected to feature on N.Z.'s most valuable legal tender coin - the 1oz. gold coin See front cover. \$4,000

144

**A large Maori carved wheku mask**, with pawa ring eyes, open mouth with protruding bifurcated tongue, the arched brow surmounted by two profile wheku heads. Rotorua area c.1950s. Height 750. \$450

145

**A 1943 Jane Brenkley carved and painted Maori themed table-top/wall plaque**, three figures to the foreground, a canoe with paddler and whare and figures behind, well detailed and with original paint in colours, signed and dated 1943, the edge with relief carved repeating leaf design. 295 x 460. See page 8. \$1,250

146

**An early 1900s rewarewa timber box**, silver shield to top, 'From Wanganui to Rotorua, H. Prouse, Christmas 1902'. 220 x 140 x 120. \$150

147

**A colonial native timber box**, in the manner of William Norrie, with panels of various native woods, the interior lined with old faded velvet. 280 x 130 x 110. \$150

148

**A large carved Maori gourd**, traditional motifs to one side and a hole to upper back section. Height 440. \$100

149

**Two carved Maori gourds**, traditional motifs; one painted, the other unpainted and incompletely carved. Heights 230 and 280. \$120

150

**A large and impressive colonial kauri gum bust**, in the form of a Maori mother and child on a wooden base. Cracking commensurate with age. Approx. 30kgs. 500 x 600. See page 8. \$5,000

151

**A good vintage N.Z. tin sign for D.H. Brown & Son**, Brookfield Roller Mills, Christchurch, lithographically printed in colours with the business name above,



an image of their five storey brick building and associated 'Grain Store', steam train with carriages and tall smoking chimney, all further above relief pressed image of two women wearing white aprons displaying a large sack of 'Peerless Flour', the base detailed with the maker's name 'Geo. Hadfield, Advertising Contractor, Wellington, N.Z.', some minor rusting and paint loss to the base to the base. Overall in very good condition. 740 x 510. See page 8. \$3,000

**152**

**A Royal Doulton stoneware 'Kia Ora' large jardinière**, decorated in relief with tiki, masks, spiral motifs and 'Kia Ora' plaques, in a pale mottled blue band, the lower section of the body decorated in darker blue. Diameter 230, height 175. See page 13. \$1,600

**153**

**An 1876 Waikato Agricultural & Pastoral Association 1st Prize Medallion designed by Anton Teutenberg of Auckland, N.Z.**, presentation engraved 'Awarded to Jas. Runciman for Grade Shorthorn Bull 1.YR...', in original copper finished metal case with blue velvet lining. Diameter of medallion 54, modeller's name cast in relief. \$1,200

**154**

**A Feltex N.Z. rug, Queenstown - N.Z.**, framed. 1380 x 680. See page 8. \$450

**155**

**Vintage New Zealand tourist poster 'Guide Rangi - Pohutu Geyser, Rotorua'**, mounted on canvas. 500 x 750 (excl. frame). See page 13. \$300

**156**

**A 1911 Hamilton Rugby Union cap**, gilt tassel to the top and fringing. The frayed label with recipient's name; J. Dickson. \$90

**157**

**Whites Aviation hand coloured photograph, 'Sandy Bay, Matapouri'**, original label verso. 520 x 620. \$250

**158**

**A Folio of Watercolours by Charles Heaphy**, edited by Anthony Murray Oliver, published 1981, in original packing. \$100

**159**

**A double plate steel engraving from the Atlas of the voyage of Labillardière in search of the La Pérouse expedition**, c.1800, 'Sauvage de la Nouvelle Zéelande' and 'Jeune Sauvage de la Nouvelle Zéelande'. Engraved by Jacques Louis Copia. 285 x 410. \$400

**160**

**Flight Lieutenant Clive Woodward (Bomber) Estcourt, RNZAF (NZ 391045), RAF Bomber Command WWII archive collection.** Includes historical memorabilia from pre-WWII, WWII period and some later material. Estcourt flew as a bomber aimer and navigator, an incredible 40 missions in active service for Bomber Command. The collection includes: ink signed and detailed bra "1.8.44 to 18.3.45. 75(NZ) Squadron -& 7 Pathfinder Squadron". Signed by crew members and with their position; "Skipper J.R. Layton, Navigator L.E. Anger,

Rear Gunner L.D. Moore, Mid Upper Gunner D.O. Light, FHR Bomber Clive W. Estcourt, Wireless Op. T. Nicholas, Engineer F. Samuel". Together with 42 named towns and cities, presumably bombed by them. Together with two R.A.F. 8.5lb practice bombs, his leather flying money belt, photos of Estcourt, 50+ various planes & others, NZ flags, Roamer watch, flying sunglasses, badges, blue trench coat, blazer, jacket, books and manuals, 11 pre and war period mostly cloth maps and 12 later, movie memorabilia; day bill and other posters, photo stills for 'Mosquito Squadron' and "633 Squadron" etc., manuscript for the book "The Stain On The Glass" by Charles Jeffrey Gray, brass model planes, plastic model planes, archive material from the Te Rapa Air Force base closed 1992 and more. A full list and further biographical details available at viewing. Provenance: From the estate of Clive Estcourt, being sold for his family. See page 13. \$3,500

**161**

**150 plus piece collection of RNZAF crested Crown Lynn crockery**, includes: 26 dinner plates, 29 luncheon plates, 19 breakfast bowls, 20 large oval plates (1 with chip), 16 medium oval plates, 6 small oval dessert bowls, 6 demitasse coffee cans and saucers, 21 tea cups, 22 saucers and pair of condiments. Includes gold RAF wings and trim. Note: orange line detail for N.C.O.'s and enlisted personal mess, blue/gold lines for officers' mess. Provenance: From the estate collection of Clive Estcourt together with a certificate allowing him to remove crockery from the Te Rapa base upon its closure. See page 13. \$850

## — N.Z. STUDIO ART —

**162**

**An Australian anagama fired vase**, cylindrical with two small loop handles at the rim, along with two Japanese Bizen ware plates. Vase height 250, plates 210. \$120

**163**

**A Bernard Leach stoneware pottery vase**, impressed ovoid form, brushed dark glaze on the pale grey ground, two encircling bands framing, impressed potter's mark, together with the St Ives mark. Provenance: From a major Hawkes Bay Collection, further details available on request. Height 130, diameter 145. \$1,800

**164**

**A set of six Len Castle studio pottery spice jars**, beehive type form, each with a different spice named, 'Garlic', 'Ginger', etc. Each with potter's impressed mark. See page 13. \$240

**165**

**Len Castle blue glazed bowl**, with underglaze chatter pattern around the inside wall. Impressed monogram. Note: Purchased from the potter 2001. Width 255. \$200

**166**

**An early Len Castle double aperture**

**vase**, the variable brown ash type glaze to the top, the two spouts with saddle between, horizontal ridges, impressed mark c.1970. Height 225. See page 13. \$750

**167**

**Warren Tippett early coffee pot and plate**, the pot with prominent throwing lines, brown tenmoku glaze. Stamped mark below the handle; the plate with brown centre and three abstract wax-resist designs, stamped mark on the foot. Pot height 185, plate diameter 240. \$100

**168**

**Warren Tippett large rectangular platter**, with repeating stamped flower motif. Not marked. Originally from a Wellington corporate collection. 475 x 360. \$200

**169**

**A good large Warren Tippett vase/lamp base**, ovoid form, lustrous red and green glaze effects, an encircling band of wax-resist decoration including circular and trellis forms, swollen rim. Height 420. See page 13. \$350

**170**

**Ted Dutch rectangular block with impressed designs on all six faces**. Name stamped in full. 70 x 50 x 50. \$225

**171**

**Doris Dutch 'City Scape'**, large built-up goblet form, blue glaze on the inside. Stamped mark on the stem. Note: Purchased directly from Doris, for whom this was a favourite and a special piece she kept in her own collection. She sold it to the current owner in 2004 as she was thinking of moving house. Height 240. See page 13. \$550

**172**

**Doris Dutch large built-up deep bowl with geometric designs**, blue glaze on the interior. Stamped mark. Height 270, width 300. See page 13. \$525

**173**

**Jim Greig 'turning form' vase**, brown tenmoku glazed, maker's initials inside the foot. Width 240. See page 13. \$650

**174**

**John Sweden jar 'The Tears of Papatuanuku'**, large ovoid jar elaborately painted with abstract faces, fish and other patterns, and 'The tears of Papatuanuku fall in the rivers ... and rivers'. Painted initials on the base, dated 1992 and inscribed 'The Tears of Papatuanuku'. Height 395. See page 13. \$650

**175**

**John Sweden, 'Tide Watcher'**, large orb form, elaborately painted with abstract designs including faces, fish, and plants. Painted initials on the base and entitled 'Tide Watcher' along with apparent Japanese calligraphy. Height 270. \$425

**176**

**Denis O'Connor lidded cube**, with abstract patterns and a curved lid with 'dorsal fins'. Brown stain and incised dashes and circles in bright colours. The lid has an unglazed white body with two fins in brown and pink and pierced linear designs. Stamped monogram. The lid has a firing crack and one fin has been broken off professionally restored.



73



69



70



72



79A



68



72A



85



86



88



97



104



124



125



130



145



141A



150



151



154

Ref: Illustrated: 'Cone Ten Down', Page 155. Dated to 1979. Height 270. See page 13. \$850  
177

**Paul Laird lustre glazed bottle vase**, stamped mark on the base. Height 195 \$90  
178

**Paul Melser wide flat platter**, with lustrous shino style glaze. Maker's mark to the base. Width 360. \$100  
179

**Paul Melser wide flat platter**, with wax-resist repeating leaf pattern. Maker's mark to the base. Width 355. \$100  
180

**Carol Swan shiny black orb form**, indented on one side, decorated with splashed gold and silver glaze decoration. Signed and labelled. Height 180. \$70  
181

**Carol Swan two pyramid forms**, one shiny black glaze with geometric patterns in a thick white glaze; together with a shorter example with thick white cracked glaze. Name labels on bases. Tallest 280. \$70  
182

**Ray Rogers large squat floor pot**, rich iron red glaze. Impressed mark. Height 380, width 440. \$300  
183

**Ray Rogers large squat discoidal vase**, mottled lustre-like glaze. Name incised in full on the base. Height 180, width 400. \$300  
184

**Michael Lucas large bowl**, thick greenish-grey glaze with a wide band of brown circles around the inside wall. Stamped mark on the foot. Width 380. \$100  
185

**Lawrence Ewing speckle glazed flask**, with cork and rope ring through a single lug on the shoulder. Incised mark on the base. Height 215. \$80  
186

**Two early Chester Nealie bowls**, with different brown glazes and wax-resist patterns inside. Early crossed circle stamped mark on both. Widths 290 and 145. \$120  
187

**Chester Nealie bowl and Toby Stafford teapot**, the bowl with glassy celadon glaze, two lugs and applied sprig with impressed frog design. Incised mark on the base and possibly a date (obscured); the salt-glazed teapot in the style of Chester Nealie, brown and fawn glaze with splashes of other shades. Wire handle wrapped in raffia. Not marked but named on faded original paper label. Heights 90. \$150  
188

**Peter Collis large vase**, with painted abstract floral decoration. Incised signature on the base and dated '83. Height 260. \$80  
189

**Peter Collis large squat floor pot**, unusual violet-blue glaze, bold overglaze gold decoration in three panels. Not marked. Height 270, width 400. \$150

190

**Peter John Simpson (UK b.1943) 'Carcassonne II'**, this monumental piece from Simpson's Carcassonne Suite, c.1989/90 was entered in the Fletcher Challenge Ceramics Awards exhibition c.1990. It has the maker's stamp at the base and appears to be dated. Note: At the show it was priced at more than \$10,000. It became part of the Auckland Studio Potters collection and was sold to the current owner in 2015. Bio: <http://www.thestudio17240.eu/Biography/peter.htm> Height 800. See page 13. \$550  
191

**Peter Lange zoomorphic sculptural teapot**, realistically modelled as a rat with baby to its back and bone to its mouth, the stopper as a cheese wedge, rich black and olive-green glaze. Maker's name on the base. Note: Purchased at Cordy's 2008. Height 175 \$325  
192

**Helen Mason and Theo Schoon collaborative mug**, with repeating stamped 'jigsaw puzzle' motifs in a band around the middle. Stamped marks by both makers under the handle. Height 95 \$500  
193

**A large Graeme Storm vase**, spherical form with shaped neck and rim, poured blue/green glaze with purple highlights, impressed mark. Height 355. See page 13. \$250  
194

**Two Graeme Storm vases**, one inverse baluster shape with carved decoration in brown glazes. Height 240; the other ovoid shape with incised and pierced foliage decoration, turquoise glazed. Height 180. \$150  
195

**Three Olive Jones pottery pieces**, a green glazed vase, flat tray and small pin tray, with incised signatures and dates. Vase height 220. Tray widths 100 and 250. \$100  
196

**A Patricia Perrin pottery vase**, ovoid, raised on four short legs, variously glazed. Height 160. \$100  
197

**Mirek Smisek green cauldron**, with tripod feet and flat lid, unusually made of earthenware. Signed in full on the base. Note: Mirek advised this was made at Stoke, Nelson, circa 1955. He could only recall ever making two of these pieces. Height 260. \$400  
198

**Mirek Smisek bowl**, with altered form and unusual 'snow' glaze varying from pale blue to pale pink suffused with a dense white speckle on the outside. Impressed monogram. Width 255. \$200  
199

**An early Mirek Smisek oil bottle**, fine dark blue/grey salt glaze, original woven cane topped cork stopper, incised full signature mark, Nelson period. Height 175. See page 13. \$150  
200

**Mirek Smisek vase**, fine combed banded and panelled decoration, variable

pale glaze over blue, green and brown tones, early impressed potter's cypher. Height 270. \$160  
201

**Three Titian wall ducks**, graduating size and with impressed numbers to reverse. \$350  
202

**An Ambrico trickle glaze elephant**, apple green tones. 130 x 90. \$150  
203

**An Ambrico trickle glaze kiwi spill vase**, apple green tones, with numbers to base. 20 x 110. \$150  
204

**An Amalgamated Brick & Pipe Co. wall vase**, denim blue trickle glaze, with scratched numbers to back. 200 x 270. \$120  
205

**A Titian Studio small two-handled platter**, decorated with Maui fishing at the North Island, handles formed by the tail of the sea birds. 305 x 175. \$150  
206

**A large Crown Lynn hand-potted vase**, shape #15 of banded spherical form, matt white glaze, designed by Ernest Shuttlebotham, printed mark and incised '15'. Height 230, two short hair cracks to the foot. See page 13. \$400  
207

**Crown Lynn Hand Crafted vase by Daniel Steenstra**, stylised plaited black floral decoration on a brown lustre ground, printed marks. Height 160. \$120  
208

**A Crown Lynn Hand Crafted vase by Daniel Steenstra**, the pine cone or leaf branch painted in colours on gloss white ground, printed marks. Height 155. \$120  
209

**A Crown Lynn Wharehanga wall plate (plaque) 'Puhi Urutapu Tamahine'**, green glaze with mild relief Maori portrait framed by a stylised Maori carving. Diameter 255, impressed number to the reverse '1023'. The original catalogue refers to this plaque as 'Representing a Virginal Young Maori aristocrat who due to a strong sense of racial and tribal pride and purity, were subject to the utmost seclusion before marriage. This young lady has the marriage tattoo on her chin and wears the traditional hei-tiki greenstone charm and a headband of woven flax in Taniko design'. See front cover. \$1,000  
210

**Barry Brickell Fatso jug**, large size, classic form with pinched bird-head type spout, speckled grey glaze with lustrous red/brown glaze highlights. Height 310. See page 13. \$1,000  
211

**Barry Brickell Fatso style jug**, olive brown glaze and tenmoku glaze to the rim. Handle has firing cracks. Possibly a collaborative piece as it has Brickell's mark and another unidentified mark. Height 195. \$100  
212

**An early Barry Brickell salt glazed Fatso jug**, deep chocolate brown glaze,



some chipping to spout and rim. Impressed mark at the base of handle. 310 x 360. See page 13. \$850

**213**

**Barry Brickell squat form bottle**, with black glaze and freeform swirling brown designs. Stamped mark at the base. Height 205. \$325

**214**

**A Barry Brickell large bowl**, glazed with light olive colour to interior and various mushroom and dark olive green to the exterior. Diameter 290. \$180

**215**

**A Barry Brickell medium size jug**, with glazed interior and partially glazed exterior in red-brown tones. Height 190. \$175

**216**

**A set of four Barry Brickell mugs**, hand-thrown with 'mushroom' side handles, variously green-brown glazed. Impressed mark beneath handles. Height 115. \$150

**217**

**A Barry Brickell large teapot**, squat circular shape with short spout and loop handle, the lid with 'mushroom' handle. Dark tenmoku glaze. Diameter 200. See page 13. \$150

**218**

**Peter Raos Floral Garden Series art glass vase**, tall tapered form with flat rim and clear foot, engraved with maker's signature and dated 1994. Height 183. \$200

**219**

**Peter Raos Art Glass vase**, similar to above. See page 13. \$200

**220**

**Peter Raos Garden Series art glass paperweight**, domed form, dominant colours of white, blue and green, engraved signature and date 1992. Height 84. See page 13. \$150

**221**

**A Garry Nash Art Glass 'Garden Series' vase**, flattened oval form, decorated with coloured canes as the flowers on speckled blue and green ground, internally red with white highlights. Engraved signature and date '89. Height 210. Note: This being one of only approx. 25 made in this series. \$350

**222**

**A Garry Nash glass vase**, iridescent petrol blue finish with bands of green and blue running through, signed and dated '95. Height 100. \$100

**223**

**A Peter Viesnik glass goblet**, together with a small bowl decorated with murrines. \$120

**224**

**A Peter Viesnik glass bottle vase**, together with a Hoglund glass footed bowl, the vase with murrines and trailing glass decoration. \$150

**225**

**A large Peter Viesnik glass bowl**, decorated with murrines and splashes of blue, pink and green, signed and dated '93. Diameter 270. \$100

## CRYSTAL & GLASS

**226**

**Two Georgian cotton twist stem wine glasses**, one conical bowled with double helix within a multiple spiral stem, the other bell bowled with lat-ticino knopped stem. Tallest 150. \$175

**227**

**Three Georgian decanters**, two of mallet form, all with various cut decoration. Heights 240, 230 and 210. \$180

**228**

**Four Waterford crystal brandy balloons**, two in the Colleen pattern and two in the Lismore pattern, one with ground foot. \$150

**229**

**Five Waterford large wine glasses**, Lismore pattern. \$250

**230**

**Four Daum crystal graduating scent bottles**, with gilded embellishment to base and rim. \$150

## MODERN MOVEMENT

**231**

**An Art Deco triple nude bronze sculpture by Henri Lautier**, the dancers staggered on an octagonal base, signed in script, foundry mark to the base 'G. Thew, 1929', original patina. Height 315. See page 16. \$550

**232**

**A pair of French Art Deco style Majolica vases/bookends**, cubist form with an animal supported upon its front paws, green and blue dominant triple majolica type glaze. Height 180. \$120

**233**

**Three French Art Deco style majolica glazed pieces**, includes: an owl mounted smoker's stand with receptacles for vesta and box, a cubist form vase/bookend and an ashtray with whippet handle. See page 13. \$160

**234**

**A WMF silver plate Secessionist spirit kettle**, the stylised rectangular domed stand supporting the burner, two supporting arms to the ovoid body teapot with swing handle, cane absent from handle. \$250

**235**

**A German Secessionist movement silver plate column candlestick**, stylish restrained decoration, stamped to the foot 'GSE E.P'. Height 280. \$120

**236**

**An Arts & Crafts copper tea caddy**, the exterior decorated with Spanish galleons on the sea, stamped to the side and base with 'Newlyn', the lid with a small swing handle. 150 x 120. \$180

**237**

**An English Pewter Art Nouveau vase**, of circular shape with tall trumpet neck, two handles looped from mid-way on the neck and join the body in bifurcated tendrils which conjoin with an overhand knot motif. Impressed mark and no. 0214, attributed to Archibald Knox design. Height 340. See page 16. \$500

**238**

**A bronze figural dish after Gustave**

**Gurschner (Austrian 1873-1971)**, the Art Nouveau female bust with long flowing hair forming the bowl to the front, impressed marks, leather fitted panel to the base. Length 200. \$550

**239**

**An Austrian Amphora sculpted vase**, the tapered basket weave type woven body with full relief sculpted florals and ivy, impressed marks. Height 240. \$150

**240**

**A Troika pottery vase**, flat circular form, incised decoration, marks to base. Diameter 120. \$100

**241**

**A French Art Deco Louis Dage pottery vase**, decorated with leaves and blueberries on a mottled blue and mushroom ground, painted mark to base. Height 145. \$120

## CHINA & PORCELAIN

**242**

**A Minton 'Chinese Marine' blue and white ashette**, decorated with a fanciful Oriental scene framed by English flowers, the well with moulded draining tree, chip to back edge of rim. 510 x 405. \$200

**243**

**An early 19thC whiteware 'Blue Willow' pattern lidded soup tureen**, c.1830. Some faults. Width 360. \$120

**244**

**A 19thC Mason's Ironstone sauce tureen and stand**, decorated in the Imari palette. Width 200. \$110

**245**

**Two Chelsea porcelain bowls**, painted with birds and insects. Repairs and faults. Diameter 240. \$100

**246**

**A blue and white bat print chinoiserie cup and saucer**, late 18th early 19thC, decorated with panels of figures and flowers. \$100

**247**

**A rare salt glaze Staffordshire figure of Peg Woffington**. Restored. Height 130. \$100

**248**

**Four 19thC Staffordshire items**, includes a seated drinking gent, two dogs and a pastille burner. \$220

**249**

**Three 19thC Staffordshire figures**, the various women in traditional dress, glazed in colours. the tallest 200. \$150

**250**

**Three 19thC Staffordshire items**, includes two spill vases, each with a pair of figures, the other, a young figure with sheep. \$150

**251**

**Two 19thC Staffordshire figured teapots**, one with lid missing, the other double sided and with lustre highlights. \$150

**252**

**Two Victorian Staffordshire figures**, the gent with rabbit to the basket suspended over his shoulder, the Scottish woman with sheep to her left side, both with professional restoration. Heights 240 and 185. \$120

**253**  
**Three Victorian Staffordshire figure groups**, all with professional restoration. \$150

**254**  
**A pair of Derby whiteware figural candlesticks**, professionally restored. Height 180. \$120

**255**  
**A pair of Meissen-style small porcelain figurines**, decorated in polychrome, raised on gilt metal stands. Professional restoration. Height 150. \$125

**256**  
**An 18thC Derby figurine**, 'Goddess of the Sea'. Height 240. \$150

**257**  
**Assorted Regency trios**, Davenport and Coalport, with traditional floral and gilt decoration, some damage. \$100

**258**  
**Two Regency Derby plates**, floral decoration and gilt embellishment, minor chips. \$100

**259**  
**A Regency Newhall lidded sugar bowl**, decorated with florals and gilt embellishments on a white ground, the centre with a band of basket weave decoration, old repair. \$100

**260**  
**A Burmantofts Faience pottery plaque**, featuring a woodland scene with mountains in the background. Diameter 455. \$150

**261**  
**A mid-20thC Royal Worcester Highland Cattle painted vase by H. Stinton**, two cattle to the front, a Highland landscape scene to the reverse, elaborate gilt enrichments, the pierced lid with tapered finial, printed mark to base including shape #2713. Height 210. See page 16. \$950

**262**  
**Three small Royal Worcester fruit painted dishes**, two circular and one long octagonal painted with peaches and grapes signed 'Ayrton' and dated in Code 4 1939. \$160

**263**  
**A Royal Worcester Grainger & Co. cabinet plate**, the centre hand painted with three river lapwings in natural habitat, the rim with gilded and pierced decoration. Date mark for 1902. \$250

**264**  
**A Royal Worcester tazza**, hand painted by Harry Price, the dish entirely painted with fruit on a mossy ground framed by a gilded scalloped edge border with shell handles, raised on a circular foot with conforming fruit painting and moulded raised gilding. Black mark, c.1951. Width 310. See page 16. \$500

**265**  
**A William Moorcroft early Pansy design vase**, baluster form, the encircling band of decoration with white glaze above and cobalt blue below, full signature in green and impressed marks to the base. Height 200. See page 16. \$550

**266**  
**A William Moorcroft early Pansy design vase**, similar to above, full signature

in green and impressed marks to the base. Height 190. \$500

**267**  
**A William Moorcroft Pansy fruit bowl**, with silver plate rim, impressed and painted mark to base, small frit to base. 215 x 110. See page 16. \$450

**268**  
**A Moorcroft charger**, Finches designed by Sally Tuffin in the ochre colourway, 1989/1990. Diameter 355. See page 16. \$450

**269**  
**A Moorcroft vase**, bulbous baluster shape, Finches designed by Sally Tuffin in the ochre colourway, 1989/1990, height 170. See page 16. \$450

**270**  
**Three c.1920s Royal Doulton for Tiffany plates**, hand painted with fish by S. Wilson, includes 'Gwyniad', 'Roach' and 'Char'. Gilt enrichments, printed and painted marks to the reverse. Diameter 225. \$300

**271**  
**A tall Royal Doulton vase**, jug form, decorated with a countryman carrying a scythe. Height 380. \$120

**272**  
**A pair of Royal Dux figures**, in classical 19thC French dress, the lady with mandolin, the gent singing, dominant salmon pink glaze. The mandolin end repaired. Triangle mark to base. Heights approx. 310. \$180

**273**  
**An attributed Australian Studio Pottery Majolica jug**, Art Deco period with radiating crescent forms to the flat-sided circular body. Unmarked. Height 275. \$120

**274**  
**A Belleek teapot**, cream and lemon lustre finish, in the form of bamboo sticks, first black mark to base. \$150

**275**  
**A Crown Devon Art Deco figurine**, 'Rio Rita', modelled by K. Parsons, gold back stamp and signature to base. Height 300. \$150

## ORIENTAL

**276**  
**A fine old Japanese carved ivory okimono of six blind travellers**, each connected to the other, carved from a single tusk section piece, signed to the base, slight fault. Provenance: The Joy and Denis Hanna estate collection. 57 x 44 x 32. See front cover. \$500

**277**  
**An early 20thC finely carved ivory netsuke of Tanuki seated with child**, wrapped in traditional robe supporting a bowl, the young boy to his left with right hand upon his head. Signed with calligraphy. Provenance: The Joy and Denis Hanna estate collection. See front cover. \$300

**278**  
**A fine old Japanese carved ivory netsuke of Okame**, kneeling with a bizarre large mushroom, strapped to her back, a small demonic figure upon her left shoulder with large leaf, two-character mark to the base.

Provenance: The Joy and Denis Hanna estate collection. See page 16. \$180

**279**  
**An old finely carved Japanese boxwood netsuke of a Sennin**, he stands in traditional robe with peach and long staff, a lantern/shrine to his back, an old label attached to the himotoshi. Provenance: The Joy and Denis Hanna estate collection. Jewelled eyes. See page 16. \$250

**280**  
**An old stained and carved ivory dream shell netsuke**, enclosing a landscape with a building, bridge and tree, signed to the base. Width 55. See page 16. \$250

**281**  
**An old Japanese characterful carved ivory figure on stand**, the farmer depicted chasing his straw hat, a hand plough over his left shoulder, the hat in front raised on its edge, all on a carved ivory shaped base, raised on a carved wood stand. Some old repairs. Length 310. See page 16. \$450

**282**  
**An Edo tsuba**, carved and inlaid iron, decorated with cloud form designs inlaid in bright bronze to the rim of the openwork circular shape. Diameter 80. In box. See page 16. \$350

**283**  
**A late Edo tsuba**, carved and inlaid iron, decorated with an eagle upon a rocky outcrop, inlaid in mixed metals including gold. The kōzuka-bitsu plugged with shakudo. Circular. 78 X 80. See page 16. \$250

**284**  
**A late Edo tsuba**, carved and inlaid iron with rolled rim, decorated in low relief with leafy patterns and butterflies inlaid in with gold highlights. The kōzuka-bitsu plugged with shakudo. Circular. 77 x 82. See page 16. \$325

**285**  
**An Edo period tsuba**, carved in low relief with ship's sails and rocky outcrops, signed beside the seppadai. Square shape. 85 x 80. See page 16. \$325

**286**  
**A late Edo period tsuba**, quatrefoil shape with scroll borders, decorated one side with a large moth carved and gilded, the opposite side with cloud forms. 80 x 85. See page 16. \$300

**287**  
**A tsuba**, pierced sukashi with spoked design with heavier bars joining the hitsu-ana and kozuka-bitsu. Circular 66 x 61. See page 16. \$175

**288**  
**A pair of fine Satsuma earthenware vases**, ovoid shape, finely painted with figures of samurai and others in alpine landscapes, seal marks under the bases. Height 240. \$700

**289**  
**A pair of Satsuma earthenware vases**, hexagonal ovoid shape, decorated with portraits of Immortals and a dragon. Seal mark signature under the base. Height 130. \$150

**290**  
**A pair of Satsuma earthenware vases**,

baluster shape, decorated with portraits of Immortals and dragons. Seal mark signatures under the base. Height 150. \$200

**291**

**A pair of Satsuma earthenware vases**, ovoid shape decorated with numerous portraits of immortals and dragons on a gilt ground, signed and marked 'Satsuma-Yaki' on painted tablet under bases. Height 175. See page 16. \$300

**292**

**A Satsuma earthenware coffee service**, comprising a coffee pot, milk jug and sugar basin, along with five demi-tasse coffee cups and saucers. Decorated with portraits of Immortals and dragons. Height of pot 160. \$300

**293**

**A Satsuma earthenware circular lidded box**, decorated with portraits of immortals and dragon, two-character signature under the base. Diameter 90. \$100

**294**

**A pair of Japanese Meiji period vases in the 'Thousand Faces' pattern**, hexagonal baluster form with dragon handles, gilt enrichments, a sinuous dragon highlighted amongst the multiple figures, painted and gilded large character mark to the base. Height 245. See page 16. \$400

**295**

**A Japanese Meiji period 'Thousand Faces' decorated bowl**, the interior with multiple geisha within an extensive landscape, the exterior with two large conforming panels, cobalt ground, gilt enrichments, marks to base. Diameter 192. \$160

**296**

**A Japanese Meiji period fine Satsuma bowl**, decorated with deities, the cobalt ground rims with fine gilt trellis and band decoration, fine character marks in red to the base. Diameter 152. \$150

**297**

**A Japanese Meiji period fine and unusually decorated Satsuma bowl**, the interior entirely decorated with scenes of samurai within an extensive landscape, the exterior with a single encircling dragon, multiple character marks in gilt to the base. Diameter 125, height 50. See page 16. \$180

**298**

**A large Meiji period Satsuma covered vase**, ovoid shape raised on three feet modelled as seated boys, moulded ring handles and knotted ropes divide the vase into four panels, painted with figures, immortals and sages. A band encircling the base with eight-character inscription/signature: Dai Nippon, Kyoto, Nishida Sei. The cover surmounted by a shishi. Height 600. See page 16. \$700

**299**

**A Satsuma potpourri vase and cover**, hexagonal urn shape raised on three feet, two handles issue from the side, the flat lid with simple piercing. Painted in enamels with portraits of immortals and a dragon on a rich gilded

ground. Signature under the base. Height 225. \$300

**300**

**A pair of Satsuma vases**, tall ovoid shape entirely decorated millefiori in gilt and polychrome. Two-character mark under the base. With wooden stands. Height 215. \$200

**301**

**A large Satsuma vase**, ovoid, decorated with two panels of figures on a cobalt ground. Signature panel under the base. Height 370. \$200

**302**

**A large Satsuma shallow bowl**, lavishly gilded and with original Satsuma tones, the interior with two scholars, a phoenix bird in the background, scalloped rim. Diameter 310. \$180

**303**

**A large Satsuma shallow bowl**, decorated to the interior with sacred cranes, with lavishly gilded embellishment, red and gilt character marks to the base. Diameter 310. \$120

**304**

**A Satsuma millefiori decorated jar and cover**, inverse baluster shape with domed cover, decorated in polychrome and gilt with a profusion of flowers. Signature mark under base, with wooden stand. Height 235. \$300

**305**

**A Satsuma jar and cover**, decorated in polychrome and gilt with birds and flowers, signed under the base, with wooden stand. Height 180. \$100

**306**

**A 19thC Kutani porcelain quality lidded urn**, all-over abstract panelled decoration in traditional red with gilt and black glazed highlights, the domed lid surmounted with a samurai figure, the handles as birds, wings outstretched, two rows of calligraphy painted to the base, the internal lid with chip to rim. Height 390. See page 16. \$450

**307**

**A 19thC Japanese Kutani cylinder vase**, unusually decorated with encircling bamboo sculpted links, hand painted in the traditional style with birds, insects and bamboo, multiple birds to the top rim, six-character marks in red to the base. Height 293. See page 16. \$300

**308**

**A 19thC Japanese Kutani quatrefoil bowl**, similar to above, six-character marks in red to the base. Width 250. \$200

**309**

**An old Japanese Kutani vase**, finely decorated with three Geisha to the front panel, elaborate gilt enrichments, gilt marks on red to the base. On wood stand. Height 145. \$110

**310**

**A 19thC Kutani baluster vase**, decorated with exotic birds including a peacock amongst blossoms, ornate gilt enrichments, six-character marks in overglaze red to the base. Height 240. See page 16. \$200

**311**

**A 19thC Japanese Kutani large cylinder**

**vase**, finely decorated with exotic birds within a floral landscape, decorative trellis panelled borders, gilt enrichments. Height 370. See page 16. \$280

**312**

**A c.1900 Japanese Kutani vase**, baluster form, flattened flower form handles, two large panels of processional figures and geishas within an extensive garden, decorative framing with gilt enrichments, character marks in red painted to the base. Height 335. See page 16. \$220

**313**

**A pair of 19thC Japanese Kutani tall cylinder vases**, decorated with birds and blossom within circular and larger panels, a profusion of birds to the top panels, gilt enrichments, character marks in overglaze red to the base. Height 338. See page 16. \$360

**314**

**A 19thC Japanese Kutani porcelain vase**, finely painted with peacock pair to one cartouche, the other with figures upon a sampan, sculpted handles, lavish gilt enrichments, painted character marks in red to the base. Height 243. \$150

**315**

**A pair of 19thC Kutani small vases**, finely painted with peacocks, birds and florals in oval cartouche form, blossom decorated framing, gilt highlights, painted character marks in red to the base. Height 96, one with single hair crack to rim. \$120

**316**

**A late 19thC Japanese Kutani tall cylinder vase**, traditionally decorated with blossom and birds, a peacock pair to one panel, moulded captured ring handles, character marks in red to the base. Height 300. \$140

**317**

**A vintage Japanese large lidded red ground Satsuma jar on stand**, panels of blossom and bamboo on a ground decorated with multiple children figures, conforming stand and lid with shishi finial. Height 840. \$350

**318**

**A c.1900 Kutani porcelain vase**, floral decoration, traditional tones, red character marks to base. Height 152. \$100

**319**

**An old Imari plate**, fluted rim, traditional decoration with a flowering urn to the centre. Diameter 285. \$110

**320**

**An old Japanese Arita porcelain vase**, baluster form, fluted rim, panelled floral and bird decoration in blue on white. Height 300. \$120

**321**

**A pair of large and impressive Japanese famille rose vases**, the flared tops with fluted rims, one with professional restoration, the bodies with panels of traditional seated figures within a walled garden, further panels and highly decorative framing including peacocks and chrysanthemum. Height 580. See page 21. \$800

**322**

**A pair of c.1900 Japanese Imari speci-**





155



152



160



164



161



166



169



171



172



173



174



176



190



193



199



206



210



212



217



219



220



233

**men vases**, spherical ribbed bodies, traditional painted decoration, raised on wood stands, various. Vase height 305. \$160

**323**

**A Japanese early 20thC finely decorated plate**, the scene with multiple figures on bridges highlighted with flowering wisteria and gilt, black and gilt character marks to the reverse. Diameter 217. \$120

**324**

**An early 20thC Japanese porcelain winter scene painted and enamel vase**, baluster form, the extensive winter scene landscape including a lake and eagle, gilt highlighted encircling borders. Height 245. See page 21. \$120

**325**

**A Japanese Imari porcelain lidded urn**, hexagonal ovoid shape, decorated in traditional palette with Imperial dragons, flowering trees and birds. Height 375. \$150

**326**

**A Japanese Imari porcelain deep bowl**, some faults. Diameter 255. \$100

**327**

**An old Japanese bronze vase of accentuated flared form**, square section, recessed long lozenge panels to each side. Good old dark patina. Height 196. In original boxwood box, the lid with old label. \$200

**328**

**A large Japanese bronze shishi pup**, traditionally decorated with paw raised on an open leaf scroll ball, flaming tail. Length 460. \$400

**329**

**A vintage Japanese bronze incense burner**, the wide flat rimmed top fitted to the urn base with full mounted sinuous dragon, the three legs with crashing wave brackets. Diameter 300, height 290. See page 21. \$600

**330**

**A fine Japanese bronze rectangular vessel**, plain square section top rim, finely decorated with 'Immortals in Garden' panels, the four short feet with shaped brackets. Good dark patina. 545 x 290 x 140. \$300

**331**

**A Japanese Meiji-period decorative red lacquer and carved bone box**, low rectangular form, the lid with shishi and rider. 320 x 260. \$400

**332**

**A fine Oriental rosewood carved lidded box**, squat lobed pumpkin form, the lid with full relief carved detail of a fruiting vine section. Good dark tone. Diameter 230. \$300

**333**

**A Japanese Meiji-period highly decorative bronze vase and stand**, the plain flared top with geometric scroll design to the rim, the interior with cylinder centre, all fitted to an open worked base of flaming waves, in original fitted wood box. Height 220. \$250

**334**

**A fine Japanese cloisonné vase**, deco-

rated with trees, wild flowers and birds on a black ground. Height 250. \$150

**335**

**A pair of large Japanese bronzed vases**, decorated with birds and blossoms, the side handles of mythical beasts, scalloped rim. Height 460. See page 21. \$750

**336**

**A pair of tall Japanese Meiji period cloisonné vases**, each decorated with a three-claw dragon above crashing waves, finely detailed, some hair cracking. Impressed character mark to base of each. Height 610. See page 21. \$1,200

**337**

**A small Japanese jewellery chest**, four drawers to one side, the other with a small door which opens to reveal two deep drawers with a smaller one below, delicate and decorative locks, inlaid box pattern, some distress. 325 x 335 x 270. \$250

**338**

**A small Chinese rosewood dressing and jewellery chest**, the lid lifts to reveal a mirror, the front pulls out and has drawers for jewellery and cosmetics, ornate brass lock and hinges. Brass side handles. 260 x 350 x 100. \$220

**339**

**A good large Japanese Meiji period bronze hibachi**, octagonal form with decorative landscape panels, two open handles, raised on four mythical mask feet and raised on a conforming wood base. Good old patina. 550 x 490 x 350. See page 21. \$700

**340**

**A pair of good quality Japanese Meiji period decorative bronze vases**, the tapered cylindrical body with herons in high relief amongst a landscape dominated with pine trees and wreaths, the open mouth with an encircling band of leaf scroll decoration, the base cast and engraved with character marks. Note: Information included refers to this vase being 'Made by Takayoshi Murakami 1871-76. Kyoto in the King's Hall. All the top artists from around Japan were sourced by the King...'. Height 310. See front cover. \$1,600

**341**

**A Chinese cloisonné plate**, a dragon chasing the mystic pearl on a black ground. Diameter 255. \$120

**342**

**Three Japanese woodblock ukiyo-e by Toyohara Kunichika (1835-1900)** - of kabuki theatre actors. Each oban size 350 x 225. \$450

**343**

**Two Japanese landscape decorated panels and a two-fold screen**. Painted with landscapes with buildings. \$110

**344**

**A Chinese large old carved ivory figure of an emperor**, he stands in traditional robes with beads suspended from his shoulders and back, a table held to his front, formal head dress, the disc form base plate with engraved character marks, black stained highlights. 858gms. Height 300. See page 21. \$750

**345**

**A Chinese Hotan Zi jade carved figure group of an elephant and children**, the children upon the elephant's back together pouring a sacred vessel, its contents scrolling to the elephant's rear and highlighted by its natural dark amber tone, further coloured highlights to the dominant white jade tone. 97gms. Length 60. See page 21. \$2,500

**346**

**A Chinese pale green jade lidded censer**, the lid finial with large foo dog, captured ring foo dog mask handles, raised on three tall conforming feet, fitted wood stand. Height 245. \$250

**347**

**A pale jade large carved Chinese ruyi sceptre**, carved in relief with birds amongst blossoms, pale tan tone. Length 440, minor loss to reverse. \$550

**348**

**A Chinese archaic style dark green jade ruyi sceptre**, classical scrolling form, the table type panels with bats, dragons and coins in relief, the shaped shaft with exotic birds and multiple calligraphic symbols to the reverse, encrusted finish to the recesses. Length 348. See page 21. \$500

**349**

**A Chinese porcelain blue and white decorated ruyi sceptre**, plain form, the dome pierced head with scrolls, salamanders and a bat framing the central circular coin type panel, the shaft entirely decorated front and reverse. Fine character marks in underglaze to one end. Length 410. \$250

**350**

**A massive mammoth ivory tusk carving**, of a Chinese sage, seated with his robe gathered around him, holding a book. Seal mark under the base. Height 260. On wooden stand. \$1,000

**351**

**A fine Chinese Hotan jade shallow dish**, plain circular shape raised on a low foot ring. The translucent stone with areas of mutton fat suffused with faint traces of lilac and small areas of deep green. Diameter 215. See page 21. \$5,000

**352**

**Four old Chinese finely carved walnuts**, each detailed with multiple figures. \$100

**353**

**Four old Chinese finely carved walnuts**, each detailed with multiple figures. \$100

**354**

**A Chinese hardstone model of a Bactrian camel**, green toned stone, the animal's back with cover and trappings. Height 280. \$150

**355**

**A vintage Chinese carved hippopotamus tusk**, the sinuous dragon confronting an exotic long-tailed bird, mounted on a carved wood stand. Tusk length 290. \$280

**356**

**A Chinese carved lapis lazuli handling piece**, ovoid form with bamboo, dragon and scroll highlights, pierced and carved in deep relief. Suspension hole to top. Length 85. \$90

- 357**  
**A Chinese carved jade pendant**, striking variable green, pale mauve and egg yolk tones. Length 44. \$300
- 358**  
**An exceptional exhibition quality large Chinese carved ivory figure group**, the six child figures practicing various martial arts within an outdoor setting including rocky outcrop, fenced garden, trees, weeping willows and blossoms with carved ivory base. 555 x 300 x 260, all upon a conforming shaped rosewood base with fine carved and fretwork detail, highlighted with fine silver wire inlay. Provenance: This large group was brought to New Zealand from China and exhibited in an international exhibition, c.1970. Our vendors had connection with the Chinese delegation and purchased at the exhibition's close. \$6,500
- 359**  
**An ivory pagoda**, set in a walled garden with trees and figures, minor loss. Height 420. \$300
- 360**  
**A Chinese silver rose bowl**, with grille, decorated with panels of flowers, with a Chinese silver stamp to base. 587gms. \$300
- 361**  
**A set of three Chinese bronze graduated size heavy censers**, plain design, side handles, two with embossed marks to base. Largest diameter 180. \$150
- 362**  
**A late 19thC Chinese silver presentation specimen vase**, long tapered neck, bamboo form handle and relief embossed bamboo foliage compressed spherical body, flared foot, presentation engraved to Dr. P.J. Todd, an independent missionary in Canton c.1910. Impressed silver marks. Height 130. \$200
- 363**  
**A set of eight vintage Hong Kong silver teaspoons**, the shield form finials detailed 'The Royal Hong Kong Gold Club', stamped silver marks. \$100
- 364**  
**Four Chinese silver napkin rings**, two decorated with dragons, marks rubbed, the bamboo ring by Wang Hing, the calligraphic ring by Wai Kee. \$100
- 365**  
**A small Chinese silver cup and dish together with a small photo frame**, the stem cup with foliate embossed decoration, the dish of plain five-lobed shape and the frame decorated with dragons. Total weight 145gms. \$100
- 366**  
**A small Chinese silver goblet**, the base and cup decorated with blossoms and leaves, gilded interior, stamped Chinese character marks and KHC to base, height 100. \$150
- 367**  
**A pair of Chinese carved ivory figures**, a standing emperor and empress, on carved wooden stands. Height 120. \$150
- 368**  
**A Chinese hardwood carving**, a sage holding prayer beads. Some age cracking. Height 390. \$180
- 369**  
**A Chinese carved hardwood lamp base**, in the form of lohan holding his staff with a bird at feet. Height 410. \$180
- 370**  
**A contemporary rosewood carving of a youth** riding on the back of an ox. Length 260. \$200
- 371**  
**A fine Chinese porcelain vase**, rectangular section, the front and back panels finely detailed with scenes of the Guilin Mountains, calligraphy to the side panels, the body with fine textured ray skin finish highlighted with relief gilt scrolls, bats and auspicious symbols. Multiple character marks in red and gilt to the base. Height 195. See *front cover* and *page 21*. \$850
- 372**  
**A Chinese porcelain polychrome enamel on black vase**, baluster form, elephant head handles, gilt dragon and mystic pearl highlights. Character marks in underglaze blue to the base. Height 225. \$200
- 373**  
**Chinese porcelain mid-19thC carp vase**, a rare example of 'powdered blue' glaze with large carp painted in various colours, gold highlights. Height 600. Professional restoration to the rim. See *page 21*. \$1,100
- 374**  
**A pair of Chinese porcelain covered vases**, inverse baluster shape, decorated in polychrome with lotus flowers and tendrils on a deep terracotta ground marked with Qian Long seal marks under the base. Height 300. \$600
- 375**  
**A massive mid-18th century Chinese porcelain export ware punch bowl**, decorated to the interior in famille rose enamels with flowers, bordered by a trellis and tendril pattern, the exterior entirely deep cobalt glazed and decorated overglaze in gilt with a zig-zag fenced garden and floral sprays. Professional restoration to rim. Diameter 390. See *page 21*. \$2,250
- 376**  
**A Chinese export ware porcelain armorial ashette**, with arms of Sir Philip Gibbes, 1st Baronet (1731–1815) a planter in Barbados. Shield: per fess argent and ermine, three battle-axes in pale sable. Crest: an arm embowed in armour, garnished or, and charged with a cross couped gules, the hand grasping a battle-axe. Incorporating the baron's badge The Red Hand of Ulster. Motto: Tenax Propositi (Tenacious of purpose) [https://en.wikipedia.org/wiki/Sir\\_Philip\\_Gibbes,\\_1st\\_Baronet](https://en.wikipedia.org/wiki/Sir_Philip_Gibbes,_1st_Baronet). His son emigrated to New Zealand in 1855, the baronetcy extinguished in 1940. [https://en.wikipedia.org/wiki/Osborne-Gibbes\\_baronets](https://en.wikipedia.org/wiki/Osborne-Gibbes_baronets). Six firing blisters to the well ground off. 460 x 380. See *front cover*. \$800
- 377**  
**A Chinese export ware porcelain armorial ashette**, with arms of Sir Philip Gibbes, as above. The shield excluding the ermine. 360 x 180. \$400
- 378**  
**A Chinese export ware porcelain armorial ashette**, with arms of Sir Philip Gibbes, as above. The shield excluding the ermine. 360 x 180. See *page 21*. \$400
- 379**  
**A Chinese export ware porcelain ashette**, decorated in underglaze blue with a river scene with buildings, boats and figures, c.1800. 460 x 380. See *page 21*. \$500
- 380**  
**An 18thC Chinese export ware porcelain ashette**, decorated in underglaze blue with a river scene with temples within a walled garden, fishermen and boatmen. 405 x 330. See *page 21*. \$500
- 381**  
**An 18thC blue and white lozenge shaped dish**, decorated to the well with a river scene with figures on a bridge, temple gardens and pagoda, framed by a 'moth' border. Faint star crack to well. 380 x 295. See *page 21*. \$200
- 382**  
**Two 18th/19thC Chinese export plates**, blue and white decoration. Hair cracks. \$100
- 383**  
**Five various 18th/19thC Chinese porcelain tea bowls**, some damage and repair. \$100
- 385**  
**Five small early 19thC Chinese famille rose pieces**, includes four cups and one dish, faulted. \$100
- 386**  
**An old Chinese wucai decorated lidded jar**, the ovoid body and domed lid in traditional wucai decoration with dragon amongst flames highlighted with mystic pearl and scrolling florals, underglazed blue with red, green and yellow overglazed enamels, the base unmarked. Minor glaze fritting to the lid finial, the lid interior with old (handwritten) label 'Bought 21st May 1952 from Sir Alfred Bent Collection 1 Beautiful 18" white and blue and green dragon design, early 'Chinese Wine J and Cover'. Height 450. See *page 21*. \$1,500
- 387**  
**A Chinese lidded porcelain jar**, the museum copy decorated with puce panels of outdoor scenes, Yongzheng six-character mark to base, in original box. 220 x 280. See *page 21*. \$800
- 388**  
**A pair of Chinese Kakiemon porcelain leaf-shaped dishes**, one with serrated rim, the other of tri-form shape, decorated with quail and flowers. Small rim frits. Largest width 295. \$250
- 389**  
**A Chinese porcelain table lamp**, the figure of Kuanyin holding a sacred peach sitting on rock with a dragon twining at her feet, on wooden base with green shade. Height 170. \$300
- 390**  
**A large celadon glaze vase**, baluster form, the front decorated with foo dogs





and stylised foo dog side handles. 165 x 370. \$650

**391**

**A pair of Chinese blue monochrome square section vases**, tapered bodies and flat rimmed necks, uniform blue glaze thinning at the edges, six-character mark in blue to base of each. Heights 300. \$600

**392**

**A Chinese wucai style large enamel ovoid vase**, the body of six lobes decorated with sinuous dragon, phoenix and florals amongst clouds, six character mark detailed to base in blue. Height 330. \$800

**393**

**A Chinese bronze and champlévé enamel gu-form vase**, stiff leaf panel design flanking the central band, raised on conforming shaped hardwood stand. Height overall 268. \$600

**394**

**A Chinese octagonal goldfish bowl**, alternating panels of calligraphy and repeating pattern including fish scale, cruciform etc. The interior decorated with goldfish and aquatic plants, some hair cracking. Diameter 265. \$200

**395**

**A highly ornate gilded Oriental bronze circular mirror**, the reverse carved in high relief with multiple animals and birds, finely detailed, the centre animal with arched back providing lug suspension. Diameter 290. \$400

**396**

**Three Chinese export ware porcelain plates**, c.1790-1810 in the manner of Spode, decorated with cobalt borders with gilt detailing, the centre of each with a wreath pattern and gilt initials 'PC'. Two diameters 245, the other 195. \$300

**397**

**A Chinese export ware porcelain blue and white plate**, with underglaze decoration of chrysanthemums, brown fired rim, c.1925-35. Very fine hairline to rim. Diameter 270. \$200

**398**

**A Chinese export ware porcelain cup and saucer**, with a finely moulded surface pattern of blossom and butterflies and polychrome enamel decoration of flowers and beetles, the rim of both cup and saucer with blue chain design, c.1770-1785. Small hairlines. \$175

**399**

**A Chinese export ware porcelain barrel shaped mug**, c.1770, decorated underglaze with 'Fishermen on the Bridge' pattern; fine crack to handle. Height 125. \$175

**400**

**A Chinese ivory figurine**, the goddess Kuanyin holding a flower branch and flower basket, on turned wood base. Height 240. \$180

**401**

**A carved Chinese ivory figurine**, a fisherman with his net, on wooden base. Height 145. \$120

**402**

**A carved Chinese ivory figurine**, a cor-

pulent Buddha sits on a carved wood pulpit. Height 80. \$100

**403**

**A Chinese carved ivory figure**, of an empress sitting on her throne, on a carved wooden stand. Height 70. \$180

**404**

**A late 18th/early 19thC Chinese famille rose lidded sparrow beak jug and saucer**, the matching pattern of five figures within a walled garden, gilt enrichments, hair crack to saucer. \$160

**405**

**A Chinese famille rose porcelain bowl**, painted with figures hunting birds, one with a falcon, one shouldering a firearm. Hairlines at rim. Diameter 200. \$100

**406**

**A famille rose lidded box**, the lid with floral bird and butterfly decorations, with conforming decoration to the sides, the interior with a division to the centre. 190 x 100 x 70. \$180

**407**

**A fine old famille rose plate**, decorated with traditional scenes and colours. Diameter 245. \$220

**408**

**A Chinese export ware porcelain mug**, c.1770, decorated in famille rose with panels of figures and birds on a background decorated with a profusion of flowers and gilded tendrils, rim chip and professional rim restoration. Height 115. \$140

**409**

**A portrait of the Imperial Noble Consort Chunhui of the Qing Dynasty**, painted in polychrome on silk. In contemporary gilt washed frame. Overall 1000 x 660. \$225

**410**

**A framed Chinese scroll painting on silk**, depicting an aged hermit sage reading a manuscript seated beneath an ancient blossom tree. 1090 x 405. See page 21. \$450

**411**

**A set of four Chinese elm furniture screens**, each with an upper panel of pierced designs including complete knots, curvilinear swastikas and 'cracked ice' with scattered blossom and leaves, the lower sections with small panels depicting warriors in landscapes. Each panel with some conforming framing. Each panel 1890 x 485. \$2,000

**412**

**An old Oriental rosewood lidded box**, profuse mother-of-pearl inlays, the lid with phoenix, dragon and mythical animals, floral sprays, etc., fitted over the internal lacquered section, the plinth base with conforming frieze. Metal mounts. 245 x 245 x 150. \$140

**413**

**A 19thC Chinese black lacquer and gilt sewing box with carved bone fittings**, the long octagonal form with hinged lid and single drawer, requiring some attention, including many original carved bone fittings, needle cases, clamps, reels, etc. 330 x 230 x 140. \$250

**414**

**An old Oriental carved, painted and**

**gilded architectural feature**, the long panel of three open sections including floral and leaf carved detail, surmounted with two shishi to the columns. 1150 x 580. \$250

**415**

**An Oriental silk peacock painted scroll**, in natural colours with flower highlights, signed with character marks. The scroll ends of blue and white porcelain. Length of image approx. 1350. \$150

**416**

**An early 1900s Chinese lacquer three-tier stacking box**, decorated with dragons chasing the mystic pearl, on conforming stand. 310 x 210 x 750. See page 21. \$800

**417**

**A pair of Chinese ancestor portraits**, painted in watercolour on paper, framed and glazed. Each 380 x 270. \$150

**418**

**An old Chinese bronze vase**, enamelled highlights including the elephant head and long trunk handles together with Pegasus amongst clouds to the body. Height 260. \$200

**419**

**A bronze champlévé enamel censer**, raised on three feet, tall shaped handles, the floral enamels in turquoise blue, green, orange and red dominant tones. Height 150. \$200

**420**

**A Chinese archaic style lidded bronze urn**, the swollen square section body and architectural lid finely decorated with angular scrolls and panels, captured ring handles, variable green patina. Height 330. \$250

**421**

**A Chinese hardwood scholar's box**, rectangular form, the lid with carved coloured stones in relief including birds, pine tree and florals, brass fittings, plain interior. 465 x 250 x 220. \$450

**422**

**A pair of ancient-style bronze ducks**, modelled with heads raised, silver overlay highlights of stylised feathers and scrolls. Height 560. \$700

**423**

**A large floor standing gilt bronze figure of Kuanyin**, the goddess stands upon a double lotus throne holding an unopened lotus blossom and leaf in her raised leaf hand, her head crowned by a coronet decorated with the Buddha, a leaf shaped flaming mandala raised behind her. Height 1460. \$700

**424**

**An Oriental carved carnelian sculpture**, the domed fish net carved with relief crabs and coins in variable red, amber and pale striated tones. 290 x 230. \$350

430

**A lady's modern 9ct. yellow gold bangle**, half hoop form. 10.75gms. \$260

431

**Five fine 18ct. gold bangles**, with engraved decoration. 15.7gms. See page 21. \$550

432

**A large old ivory slave bangle**, circular section, a single scarab beetle carved in relief to the outer edge. Diameter 105. \$110

433

**A Pandora bracelet**, with 28 silver, glass and gold beads and spacers. Approx. retail. See page 21. \$500

434

**A 9ct. gold charm bracelet**, the double curb links set with 23 gold charms many of a substantial size, includes a telephone, pearl set egg basket, ice skate, mandolin etc. 108gms. See page 21. \$2,500

435

**A retro 9ct. gold bracelet**, six large gold circles joined by flat matt finish links. 26gms. \$530

436

**A vintage Eastern silver gilt and carved ivory panelled wide bracelet**, the four rectangular panels pierced and carved with florals, each framed by fine scroll and floral wirework decoration. Width 33. \$240

437

**A banded agate bead bracelet**, the large spherical beads of striated dark to mottled brown tones, pale central band. Diameter of the 12 uniform 20mm beads. See page 21. \$100

438

**A banded agate bead bracelet**, similar to above. \$100

439

**A banded agate long bead necklace**, the uniform beads of striking pale and dark tones. Length 950. \$120

440

**A 14ct. yellow gold ruby and diamond necklet on a 9ct. yellow gold chain**, the 14ct. yellow gold centrepiece with hinged arms in a spray style incorporating 18 rubies and 28 round brilliant cut diamonds. Valuation available. \$650

441

**A vintage 9ct. gold and moonstone necklace**, five oval moonstones in rub-over mount, suspended from a 9ct. rose gold chain. \$200

442

**An Edwardian 9ct. rose gold and garnet pendant**, open oval form highlighted with two almandine toned garnets. \$90

443

**An Edwardian 9ct. yellow gold peridot and garnet pendant**, on a 9ct. yellow gold chain, open worked, highlighted with coloured stones. \$120

444

**An Edwardian 9ct. yellow gold, turquoise and seed pearl pendant necklace**, open scrolling heart form. \$140

445

**An Edwardian large 9ct. yellow gold coloured stone and seed pearl pendant**, scrolling and floral form highlighted with four amethysts. \$120

446

**An Edwardian 9ct. yellow gold garnet and seed pearl pendant necklace**, gold marks to the reverse. \$110

447

**An Edwardian 9ct. yellow gold amethyst and seed pearl pendant necklace**, the pendant with double scroll support to the three sectional drops including amethysts and seed pearls, fine gold chain attached. See page 21. \$220

448

**A 9ct. yellow gold green stone and seed pearl necklace**, the two variously cut green stones possibly tourmaline. \$160

449

**A 19thC 15ct. yellow gold necklace**, the three joined engraved ball forms connected to a snake-link chain with two later joins. Length 400. 16.1gms. \$550

450

**A 9ct. yellow gold rolling ball fob pendant**, wishbone-type mount. \$140

451

**A Victorian silver fancy wide hinged bangle**, the top with applied coloured gold highlights to the decorative C-scroll panel designs, bead border. Birmingham 1882 by David & Lionel Spiers. \$160

452

**An 18ct. gold and diamond ring set**, a 0.51ct. princess cut diamond solitaire ring, together with a matching band set with 21 princess cut diamonds. TDW 0.98ct. Valuation available. See page 24. \$1,800

453

**A modern 14ct.(approx.) white gold jadeite and diamond cluster ring**, 36 claw set diamonds surround a central oval cabochon cut jade 159 x 115mm, diamonds TDW 0.54ct. Valuation available. See page 24. \$1,600

454

**An 18ct. white gold and yellow sapphire dress ring**, the scrolling mount encrusted with small round brilliant cut diamonds, with three oval and two pear shaped yellow/orange sapphires 'scattered' in the mount, TDW 0.50ct. TSW 5.06ct. Colour G-H and J-K, clarity I1. Valuation available. See page 24. \$1,400

455

**An 18ct. white gold diamond and sapphire cluster dress ring**, with two flower style clusters of 67 claw set diamonds holding eight round and oval facet cut sapphires. TDW 0.41cts. TSW 4.20cts. Colour H-K, clarity I1. Valuation available. See page 24. \$1,500

456

**An 18ct. white gold diamond and cultured pearl dress ring**, a large cup set South Seas cultured pearl surrounded by 106 grain set diamonds set in a crossover X-style shoulder mount, one half plain the other pavé set. TDW 0.50ct. Pearl 13.45-5mm. Light cream/

green, quality B. Valuation available. See page 24. \$1,300

457

**A 14ct. white gold and diamond solitaire ring**, the 1.01ct. round brilliant cut diamond claw set, upswept shoulders. Valuation available. See page 24. \$3,250

458

**A lady's modern 18ct. white gold and multi-diamond cluster ring**, long lozenge form with central triple raised geometric section of 15 baguette diamonds and four modern brilliants framed by a full encircling radiating band of baguette diamonds, an outer row of bead set small modern brilliant cut diamonds, the three bar shoulders with further conforming diamonds, the 96 modern brilliant cut diamonds of 0.58ct., the 66 baguette diamonds of 2.13cts. TDW 2.71ct. Valuation available. See page 24. \$4,200

459

**A lady's modern 18ct. white gold and diamond floral cluster pendant on chain**, the central pear-shaped cluster of channel and micro-bead settings with a petal surround of further micro-bead diamond settings. The four baguette cut diamonds of 0.18ct., the 81 modern brilliant cut diamonds of 0.78cts. TDW 0.96ct. Valuation available. \$1,850

461

**A lady's modern 18ct. white gold and diamond set cluster ring**, the front as a large shaped cluster comprising 11 baguette cut diamonds of 0.35ct. framed by two rows of 96 micro-bead set brilliant cut diamonds of 0.62ct. TDW 0.97ct. Valuation available. See page 24. \$1,800

462

**A lady's 18ct. yellow gold and diamond encrusted half-hinged bangle**, the 17 tapered diamond clusters of 87 brilliant cut diamonds with TDW 3.00ct. 16.40gm. Valuation available. See page 21. \$6,000

463

**A lady's modern 18ct. white gold and diamond set tennis bracelet**, the 74 square box link settings each set with a princess cut diamond, TDW 4.87ct. Valuation available. See page 21. \$7,500

464

**A lady's modern 18ct. white gold and fully diamond set necklace**, the 161 tapered box and channel section link settings each set with a princess cut diamond, TDW 12.64ct. Length 410. Valuation available. See page 24. \$20,000

465

**An impressive lady's modern 18ct. white gold and diamond set necklace**, the flexible linked oval micro-bead set D-form segments set with 1,422 round brilliant cut diamonds with TDW 18.16ct. Valuation available. 108gms. Length 460. See page 24. \$30,000

466

**A lady's 18ct. yellow sapphire and diamond cluster ring in the Art Deco**



**manner**, the central emerald cut yellow sapphire of approx. 1.35ct. framed by 10 round brilliant cut diamonds with four baguettes angled to the corners and three further round brilliant cut diamonds to each shoulder. TDW of 0.50ct. \$2,500

**467**

**An 18ct. yellow and white gold Art Deco style diamond and sapphire cluster ring**, the central modern brilliant cut diamond framed by an encircling band of sapphires and an outer band of 20 modern brilliant cut diamonds, English made. \$2,800

**468**

**An 18ct. gold diamond and emerald Art Deco style ring**, the oval facet cut emerald in a rub-over mount, 16 round brilliant and baguette diamonds set in the diamond shaped mount, upright shoulders. See page 24. \$1,500

**469**

**An estate 18ct. gold and emerald ring**, the 4.20ct. oval cabochon emerald rub-over set, the mount with applied floral and rope decoration, split shoulders. Valuation available. See page 24. \$1,500

**470**

**An estate 18ct. gold diamond and sapphire ring**, the 0.50ct. cornflower blue sapphire bead set in a navette shaped mount set with 14 old European cut diamonds, TDW 1.20cts, Colour D-F, Clarity VS to I-1. Valuation available. See page 24. \$

**471**

**An 18ct. diamond and aquamarine Art Deco style ring**, the emerald cut aquamarine in a rubover mount, the shoulders in a split leaf design and encrusted with small round brilliant cut diamonds. See page 24. \$850

**472**

**An 18ct. gold pearl and greenstone ring**, the oval cabochon Marsden flower greenstone claw set and surrounded by 28 white seed pearls, split shoulders. Valuation available. See page 24. \$650

**473**

**A 9ct. rose gold and tiger's eye ring**, the oval cabochon tiger's eye in a rub-over mount in a tapering domed shank. \$200

**474**

**A heavy gold and banded agate ring**, the flat oval banded agate in a rub-over mount, with embossed decoration to shoulders, testing as at least 18ct. gold. 12.4gms. \$430

**475**

**A lady's 18ct. white gold Chinese jade and diamond dress ring**, the oval cabochon jade panel of good vibrant green tone framed by six round brilliant cut diamonds. \$180

**476**

**A late Victorian 18ct. yellow gold sapphire and diamond bridge ring**, the three circular facet cut sapphires of light blue tone and one faux sapphire spaced by two old cut diamonds and one faux diamond. Hallmarked Birmingham 1899. \$240

**477**

**A vintage 14ct. yellow gold, opal and ruby princess type ring**, the tall domed setting with claw set rubies above oval cabochon opals. \$200

**478**

**A modern 18ct. white gold large three-stone diamond ring**, the centre stone of approx. 1.00ct. flanked by two of approx. 2.90ct., each in a six claw coronet mount, classical tapered shoulders, the average quality diamonds of low clarity. No valuation. See page 24. \$1,700

**479**

**A modern 18ct. white gold jade and diamond dress ring**, the long rounded rectangular vibrant green jade panel claw-set above a band of recessed modern brilliant cut bead-set diamonds, plain wide flared shoulders, with an oval pierced trellis undermount. The jade panel 16.2 x 7.2mm. See front cover and page 24. \$1,250

**480**

**A modern 18ct. white gold impressive large ruby and diamond ring**, the emerald cut ruby of approx. 14cts., claw-set in an open geometric mount, flanked by nine baguette cut diamonds and two modern brilliant cut diamonds to each side. See front cover and page 24. \$1,350

**481**

**A modern 18ct. white gold amethyst and diamond cluster ring**, the oval facet cut amethyst of approx. 3.8cts. held in four claws above two encircling bands of modern brilliant cut diamonds, basket mount. See page 24. \$650

**482**

**A lady's modern 18ct. rose gold peridot and diamond cluster ring**, the oval facet cut green peridot of approx. 1.8ct. in rub over mount set above an encircling band of brilliant cut diamonds, a further three diamonds set in a cluster to each shoulder, basket mount. See page 24. \$400

**483**

**A lady's modern 18ct. yellow gold three opal and diamond cluster ring**, the oval cabochon opals claw set in a row, each framed by an encircling band of recessed modern brilliant cut diamonds. See page 24. \$420

**484**

**An 18ct. rose gold opal ruby and diamond cluster ring**, the central claw set ruby framed by six radiating oval opal cabochons, each spaced by a small round brilliant cut diamond. See page 24. \$300

**485**

**A lady's modern 18ct. white gold sapphire and diamond cluster ring**, the three sapphires framed by an encircling band of small brilliant cut diamonds, shaped pierced shoulders. See page 24. \$1,200

**486**

**A lady's modern 14ct. yellow and rose gold tourmaline and diamond dress ring**, the wide tapered band with central large oval facet cut tourmaline in

substantial rub over mount, flanked by a recessed curved band of six small round brilliant cut diamonds to each side, the tapered shoulders each with two opposing big cats in 14ct. rose gold. See page 24. \$500

**487**

**A modern substantial 18ct. white gold, jade and diamond dress ring**, the large curved oval jade cabochon of vibrant green gem quality, held by four pairs of diamond set claws and encircled by a band of small round bead set modern brilliant cut diamonds, an oval trellis to the internal mount. The jade cabochon measuring approx. 22 x 9mm, 13gms. See page 24. \$1,600

**488**

**A retro 14ct. gold and citrine cocktail ring**, the large oval facet cut pale gold citrine claw set in a high split shoulder mount. See page 24. \$350

**489**

**A vintage 18ct. yellow gold solitaire diamond ring**, the oval old cut diamond of approx. 0.25ct. secured by six long tapered bars forming the claws. Hallmarks rubbed. See page 24. \$380

**490**

**An Art Deco 9ct. yellow gold and turquoise bead ring**, the diamond shape top set with nine turquoise cabochons. \$110

**491**

**A 14ct. yellow gold and pearl diamond ring**, the central cultured pearl upon an eight-point star mount, each set with a small diamond. \$90

**492**

**An estate 9ct. gold, amethyst and peridot dress ring**, the wide tapered band with central recessed mounted peridot, flanked by two brilliant cut amethysts, gypsy style. \$150

**493**

**An early 20thC 18ct. yellow gold, natural sapphire and diamond dress ring**, the oval faceted claw set central sapphire framed by four small diamonds in rub-over settings, forked shoulders. See page 24. \$300

**494**

**A gent's vintage 9ct. gold seal ring**, the tablet top classically engraved with the Lion Rampant, in later box with label 'Cast for 'Holbrook' Signet Ring'. 9gms. See page 24. \$300

**495**

**A lady's 18ct. yellow gold and 1.10ct. diamond solitaire ring**, the round modern brilliant cut diamond graded colour K and Si2 and of Very Good make, central proud white gold claw setting. Valuation available. See page 24. \$6,500

**496**

**A lady's 18ct. white gold and diamond solitaire ring**, the modern brilliant cut diamond of 1.01ct, graded colour G, Si2 and of excellent make, four claw set, GIA number to girdle. 2017 valuation available. \$8,500

**496A**

**A pair of lady's modern 18ct. white gold and diamond three-quarter hoop**

**earrings**, comprising a double row of cast-in micro-claw and micro-bead settings (leaf style edging) including 158 round brilliant cut diamonds with TDW 2.37ct. Valuation available. See page 24. \$3,800

**497**

**An 18ct. gold band**, plain slightly domed, testing as at least 18ct. 7.2gms. \$250

**498**

**A Victorian 15ct. gold silver and diamond brooch**, the rococo scrolling frame in yellow gold and silver set with 61 European and Swiss cut diamonds, TDW 1.78ct., Colour E-F, Clarity VS to SI. Valuation available. \$800

**499**

**A gold and blister pearl brooch**, the single bar set to the centre with a large teardrop shape blister pearl, testing as at least 18ct. gold. 11.8gms. See page 24. \$400

**500**

**A Victorian 9ct. gold and cameo brooch**, the well carved cameo in the form of a classical woman with flowers and leaves woven into her hair, in a rub over mount with rope edge decoration. \$120

**501**

**A c.1940s Trifari 'Jelly Belly' fly brooch**, the clear cabochon mounted to the silver body and wings, gilt washed, highlighted with clear and coloured gems. Stamped marks. Note: Trifari Jewellery Company was founded in 1910, then acquired by Alfred Philippe in 1930 who introduced the famous painted patented Jelly Belly jewellery. See page 24. \$325

**502**

**An Edwardian 15ct. yellow gold sapphire and seed pearl open heart brooch**, floral design set with sapphires and seed pearls, a conforming 'puff' heart suspended to the centre. \$140

**503**

**A George III gold and seed pearl mourning brooch**, rounded rectangular form, the central panel with hair plait under crystal glaze cover, a band of small pearls encircles. \$100

**504**

**A 19thC 9ct. yellow gold fancy framed carved cameo pendant/brooch**, the classical woman in profile with fine relief carved ringleted hair, the open work frame with scroll and leaf design. \$450

**505**

**A Victorian large oval mourning brooch**, the gilt metal frame and back with restrained scroll designs, the glazed central panel including a hair locket scroll with bead and leaf designs. \$100

**506**

**A Scottish silver and jewel set brooch**, square star form, the central large amber toned jewel framed by coloured stone and shell panels. \$90

**507**

**A 19thC pique gold and tortoiseshell brooch**, four panelled circular form with floral and Maltese cross inlay. Diameter 32. \$90

**508**

**A c.1900 9ct. yellow gold framed portrait brooch**, the Vienna type porcelain hand painted panel of a young woman. Height 48. \$220

**509**

**A 19thC 15ct. yellow gold mourning brooch**, long narrow rectangular form with central glazed panel of plaited hair, stamped gold marks to the back and maker 'TJ'. 6.5gms. Length 42. \$300

**510**

**A 19thC 18ct. gilded yellow gold and citrine brooch**, the large oval facet cut citrine in a decorative wide C-scroll frame with textured leaf and recessed panel design. 8.59gms. See page 24. \$500

**511**

**A c.1900 9ct. rose gold framed pink and white shell portrait cameo brooch**, the classical woman in profile, the plain frame with wire rope detail. Height 41. \$150

**512**

**An 18ct. yellow and white gold diamond set military 'Shell and Flame' brooch**, the insignia entirely diamond set, one missing, mounted on plain bar. Note: The 'Shell and Flame' insignia has been used by European armies for several centuries and is still used by many countries in Western Europe, i.e. The Grenadier Guards in Britain etc. \$360

**513**

**An early 20thC 15ct. yellow gold and carved coral rose spray brooch**, the rose flower of peach tone, stamped 15 to the reverse. \$200

**514**

**A 15ct. gold seal**, the white agate carved with intaglio armorial in a heavy ornate gold frame. \$800

**515**

**A pair of 9ct. rose gold tiger's eye cufflinks**, the oval cabochon tiger's eye in rub-over mount with the oval shield engraved, together with three matching shirt studs. \$200

**516**

**A pair of 9ct. rose gold and carnelian cufflinks**, the oval cabochon carnelian in a rub-over mount, plain gold shield with engraved initial. \$150

**517**

**An 18ct. gold Italian medallion**, depicting the Royal Navy vessel San Giorgio to one face, verso St George slaying the dragon and the Latin motto 'Tutor et Vltor'. 11.5gms. Diameter 30mm. \$400

**518**

**A pair of 9ct. rose gold and chrysoprase cufflinks**, the oval cabochon chrysoprase in a rub-over mount, plain gold shield. \$150

**519**

**A rare Dupont lighter**, blue enamel banding to a silver metal, in original box. \$400

**520**

**A pair of early 20thC 9ct. rose gold and shark's tooth earrings**, fittings for pierced ears. \$90

**521**

**A c.1900 rolled gold sovereign case**, classical scroll engraved by Dennison. \$120

**522**

**A c.1900 Chinese silver belt**, the buckle and multiple uniform links of pierced and engraved design, stamped maker's calligraphic marks to reverse. Length 1010. \$240

**523**

**A contemporary silver and 'Marsden flower' pounamu pendant**, the rectangular form silver set with a polished piece of flower pounamu, suspended on a fine silver chain. Length of pendant 20. \$120

**524**

**A good N.Z. Colonial 15ct. yellow gold and gold bearing quartz fob**, tapered long pentagonal form, gold cap mount with decorative bands and shield cartouche. Length 52. See page 24. \$900

**525**

**A 9ct. rose gold capped greenstone wide bar brooch**, the later matt finished plain greenstone slab of rectangular form, the engraved gold cap ends stamped with maker's mark 'Walsh', (Walsh & Co., Masterton). \$180

**526**

**A N.Z. colonial 9ct. rose gold capped gold bearing quartz pendant**, the rounded tapered large pendant displaying loaded gold, plain cap mount. Length 49. See page 24. \$320

**527**

**A colonial 15ct. yellow gold mounted banded agate pendant**, engraved decoration to the cap. Length 54. \$120

**528**

**An Australian colonial 15ct. yellow gold framed moss agate brooch**, large oval form with distinctive patterning, the gold frame with fine rope twist type border, stamped marks. 51 x 39. See page 24. \$300

**529**

**A pair of 9ct. gold and greenstone cufflinks**, two small shields set with a polished oval cabochon greenstone in a rub-over mount. \$150

**530**

**An unusual silver gilt Patron jewel by Young & Co., Auckland**, awarded to H E Lady Islington (wife of Lord Islington, Governor-General) for services rendered to the Girl Peace Scouts in 1912. The Girl Peace Scouts were an early association that preceded the Girl Guides and were created by Lady Baden-Powell. Suspended from a dark blue cotton ribbon. See page 24. \$800

**531**

**A 9ct. gold running medal by Anton Teutenberg (Auckland)**, for an Auckland Grammar School Old Boys' Invitation race, 1906. Medal awarded to F H Bedford (Frank Hardy Bedford). Bedford served at Gallipoli with the engineers and lived in Bellevue Road, Mt. Eden. See page 24. \$800

**532**

**A 1929 New Zealand 9ct. yellow gold shooting medallion**, large size, the front with angular shield form engraved with a shooting scene, outer engraved wreath frame, the reverse with presentation engraving 'Waipu Champi-



329



324



321



335



336



344



345



350



339



351



371



373



348



375



378



379



380



386



381



447



431



433



434



437



462



463



387



410



416



onship. Presented by H.F. Forster Esq. Won by T. Wilson 1929'. Embossed with maker's mark for Stoneham. Length 40. 15.2gms. See page 24. \$500

## CLOCKS & WATCHES

533

**An 18ct. gold open face pocket watch**, Swiss movement, some case faults and movement requires attention. \$300

534

**A lady's Zenith 9ct. gold wristwatch**, with integral mesh strap, white enamel dial with Roman numerals. Total weight 20.6gm. \$250

535

**A lady's 18ct. white gold and diamond Longines wristwatch**, the silvered face surrounded by 28 round brilliant cut diamonds, the mesh strap stamped '750 Longines', TDW 0.90cts, valuation available. See page 24. \$1,100

535A

**An 18ct. gold cased pocket watch**, open face with a white enamel dial, Roman numerals, railtrack minutes and subsidiary seconds, the lever wind movement signed Wm. Hall, 60 Albion St., Birmingham, gold dust cover, hallmarked back cover with engraved initials; with gold plated chain. Case weight including movement 6.5gms. \$1,100

536

**A Baume et Mercier 'Capeland' chronograph gent's wristwatch**, c.1999, automatic movement, silver dial with Arabic numerals; subsidiary hour, minute and seconds dials, date aperture at 3, silver luminescent hands; stainless steel 38mm diameter case, link bracelet, butterfly deployant clasp. See page 24. \$650

537

**A 19thC French brass striking carriage clock**, working, the bell strike at fault. \$220

538

**A small French brass cased carriage clock**, the white enamelled dial with Roman numerals marked 'B. Petersen and Co., Christchurch, N.Z.' Working order, with key. Height 90. \$180

539

**An Edwardian table clock**, set in a silver plate minaret, the enamel dial with Roman numerals. 110 x 270. \$300

540

**An Edwardian brass desk clock and barometer**, set in a bicycle, the clock and barometer as each wheel on a decorative conforming stand. 180 x 80. \$200

541

**A 19thC figured mystery clock**, the bronzed young boy fruit seller modelled with open mouth as if calling attention to his fruit, his clothes ripped and torn, his right hand supporting the traditional gilt framed clock, the ebonised base with silver presentation plaque. Height overall 400. \$300

542

**A Jaeger-LeCoultre 'Atmos' perpetual clock**, with plated brass case with

glass panels to all sides and top, spirit level to the base, raised on adjustable feet. The gilt chapter ring with Arabic numerals to the quarters. 210 x 160 x 233. In original fitted and named box. See page 24. \$1,200

543

**A rare late 19thC ruby glass and gilt metal Art Nouveau Gilbert Clock Co. mantel clock**, the unusual ball ruby glass body with gilt metal mounts highlighted with Art Nouveau scrolls and forms, the enamelled chapter ring with Arabic numerals enclosing the exposed escapement above the maker's symbol of a 'G' within a diamond, the movement engraved with maker's name and patent dates for 1896 and 1902, gong striking, mercury filled pendulum. 165 x 125 x 280, the circular rear hinged cover requiring attachment. See page 24. \$850

544

**A Waltham deck watch**, brass cased in gimbal mount, mounted in triple layer deck case, silvered dial with Roman numerals, minute indicators, subsidiary eight-day reserve power dial along with a subs-seconds dial. The case contained in an outer deck box with latched hinged cover and securing leather strap, the case engraved 'U.S. Navy, No. 537'. Watch diameter 75. \$2,000

545

**A 19thC rosewood drop dial wall clock**, the octagonal face with cut brass inlay, the circular dial with Roman numerals, the pendulum movement striking on a gong. Height 460. \$300

546

**A 19thC mahogany small cased wall timepiece**, in the manner of Thomas Cole, the rectangular rosewood case with glazed front giving way to a silvered dial with Roman numerals, finely cut 'blued' steel hands, the gilt surround finely engraved with leaf and floral scrolls, eight-day movement. Working, with keys. 198 x 140 x 48. See page 24. \$450

547

**A good quality 19thC weight driven Vienna regulator wall clock**, the circular dial with Roman numerals and subsidiary seconds dial, the pendulum movement striking on a gong, turned column mouldings and turned finials. With keys. Height overall 1260. See page 24. \$900

548

**A large 19thC French wood cased oval wall clock**, with profuse carved leaf and flower decoration, the dial with enamelled cartouche Roman numerals marked 'Sylvestre à Paris', the pendulum movement striking on a gong. Some faults. Height overall 760. \$500

549

**A Victorian spelter figural clock garniture set**, the clock with a sailor with whale harpoon, with the garniture of a sailor and accompanying fisherwoman, on turned wood bases. Height 720 and 540. \$450

## SILVER

550

**A silver mounted photo frame**, circular, the pierced and embossed entwined ivy frame on red velvet backing. London 1900 by G.H., possibly Harrison Brothers & Howson. Diameter 155. \$120

551

**An Edwardian silver photo frame**, serpentine square outer, circular inner, struck back. Birmingham 1904. 150 x 140. \$120

552

**A silver photo frame**, profusely engraved with floral decoration, wooden back and strut, stamped 'Sterling 950'. 235 x 285. \$250

553

**An Edwardian Art Nouveau silver photo frame**, sinuous poppy design embossed. Birmingham 1901 by Horton & Allday. 212 x 168. The walnut back missing the strut. \$260

554

**An Edwardian silver purse**, rectangular form with relief embossed floral swag and wreath design, silver handle with ring suspension. Birmingham 1906 by Samuel M. Levi. \$120

555

**A 1920s lady's silver purse**, swollen narrow handbag form in plain design, ring suspension to the chain support. Birmingham 1920 by W.H. Haseler Ltd. \$120

556

**A silver and M.O.P. Punch teething ring and two other items**, Punch minus his bells, the silver wythen handled paper knife with broken blade and the silver plate parasol handle terminating in a horse's head, no shaft. \$120

557

**A late Victorian silver and crystal perfume bottle**, Eiffel Tower form with an elaborately embossed silver collar. Chester 1901. Height 220. \$150

558

**A small silver cigarette or card box**, plain design with presentation inscription to lid. Sheffield 1928. 110 x 90 x 50. \$150

559

**A 1920s large silver Art Deco capstan inkwell**, circular, mildly domed hinged lid above the octagonal plain flared base, no liner. Birmingham 1929 by Henry Matthews. Diameter 153. \$300

560

**Three 1890s/1900s Russian silver table-spoons**, fiddle pattern, stamped with the Kokoshnik assay mark, 239gms. \$160

561

**A Russian silver cigarette case**, the top profusely engraved with floral decoration and a gold monogram, inscription to the reverse, '800' stamp to the interior. 60 x 75. \$250

562

**Two silver 'Armada' dishes**, graduated smaller size, based on the 16thC silver dishes seized from the Spanish/Portuguese Armada treasure Ships. London 1964 and 1959 by Payne & Son and William Comyns & Sons Ltd. total weight

182gms. Both in original boxes. Diameters 83 and 120. See page 29. \$110

**563**

**Two silver Armada dishes**, slightly larger and similar to above. London 1972 and 1976. Diameter 171. 540gms. \$300

**564**

**A large silver Armada dish**, similar to above. London 1976. 458gms. Diameter 223. \$280

**565**

**Two silver Armada dishes**, similar to above. London 1957 and 1972, in single box with original pamphlet 'The Story of the Armada Dish'. 348gms. \$200

**566**

**An all silver early 20thC hip flask**, the plain silver body with a removable silver cup, the dome topped bayonet fitted hinged lid requiring attention, shaped for the hip. Birmingham 1915 by Mayes Mills & Co. 286gms. Length 150. \$220

**567**

**A mid-Victorian silver hip flask**, the top with a very fine woven wicker cover, the lower half removable as a cup, with machine decoration, the screw top with conforming decoration and the word 'brandy', monogram to front. London 1864 by Thomas Johnson I. \$250

**568**

**A small silver tea caddy**, cylindrical, decorated in relief with chinoiserie. Birmingham 1899. Height 65. \$150

**569**

**A small silver tea caddy**, cube form, decorated in relief with European peasants in a landscape. Chester 1903. Height 85. \$150

**570**

**A George III Irish silver sugar basin**, lobed body section, scroll handles, fine repeating panel top border, raised on four lion's paw feet. Crested. Dublin 1812 by Richard Sawyer. 316gms. Length 220. See page 29. \$350

**571**

**A Victorian embossed silver sugar caster**, ornate wrythen embossed and fluted panels, tall pierced conforming domed cover. London 1889 by Charles Stuart Harris. 176gms. Height 178. See page 29. \$280

**572**

**A George III silver caster**, baluster form, relief wrythen fluted detail, pierced cover. London 1764 by I.D. (unidentified). 129gms. Height 155. See page 29. \$180

**573**

**A George III silver caster**, plain elegant baluster form, diamond repeat engraved pierced lid, the spreading circular base to a square foot. London 1799 by Crispin Fuller, a noted caster maker. 101gms. Height 152. See page 29. \$180

**574**

**A Victorian silver sugar bowl**, finely embossed and engraved with floral swags and ribbon bands, the top rim and spreading foot with fine bead detail. Sheffield 1869 by Martin, Hall & Co. Diameter 113. 149gms. \$150

**575**

**A George III Irish silver teapot**, engraved banded decoration including leafy swags, engraved armorial of a dragon's head above a castle, raised on ball feet. Dublin 1815 by Richard Sawyer, a noted teapot maker. 649gms. See page 29. \$650

**576**

**A George III silver cream jug**, squat baluster form embossed and engraved with floral designs, vacant cartouche to each side, raised on four cast scrolling legs. London 1804 by Robert Hennell I & Samuel Hennell, David Cooke label to base, gilded interior. 245gms. See page 29. \$180

**577**

**An impressive Edwardian silver banquet tray**, rectangular form with elaborate leafy scroll framed vacant cartouche, the gadroon border with shell detail to the corners, conforming handles. Birmingham 1907 by J. Sherwood & Sons. Approx. 2.85kgs. 630 x 370. See page 29. \$2,600

**578**

**A late Victorian silver four-piece tea service**, the ovoid bodies with fine scale engraved lobed lower body panels with shell highlights, conforming decoration to the tops and domed lids, in the Chippendale manner, raised on three pad feet. London 1897, 1898, 1911 and 1915 by Child & Child. Total weight 1455gms. See page 29. \$850

**579**

**A pair of late Victorian silver Chippendale style sugar and cream**, matching above. London 1897 by Child & Child. 250gms. \$160

**580**

**A 1920s silver teapot and hot water pot in Arts & Crafts plain design**, the handle fittings of stylised scroll and organic form, plain bodies. London 1926 and 1929 by 'C.E.', possibly Charles Edwards, a noted Arts & Crafts maker. 1160gms. \$650

**581**

**A George III Old Sheffield Plate coffee pot**, plain classical urn form body, the long looping handle with leaf detail, fine ribbing to the spreading foot and lid rim. Height 270. \$120

**582**

**A 1920 Art Deco silver three piece tea service**, stepped flared circular bodies and feet, angular handles. Birmingham 1920 by Joseph Gloster Ltd. 623gms. \$550

**583**

**A large Victorian silver plated butler's tray**, oblong shape with canted corners, pierced gallery, engraved decoration. Ebony handles with scroll supports issue from the sides. Width 790. \$250

**584**

**A George III silver double ended marrow scoop**, London 1775 by George Smith III. 50gms. Length 222. \$250

**585**

**A William IV silver fish slice**, fiddle pattern, the blade with pierced decora-

tion. London 1831 by William Chawner II. 166gms. Length 310. \$200

**586**

**A pair of mid-Victorian silver and ivory fish servers**, the ivory handles decorated in a beaded wrythen twist, the silver knife and fork with leaf and scroll decoration. Sheffield 1861 by Henry Wilkinson & Co. \$220

**587**

**A George III silver fish slice**, the lozenge form tapered blade with pierced and engraved decoration including two cornucopia, the handle with fine bead ribbing. Crested. London 1782 by Robert Hennell I. Length 298. \$280

**588**

**A pair of Victorian silver-plated fish servers**, beautifully pierced and engraved decoration and plain ivory handles, in fitted box. \$100

**589**

**An early 20thC German silver bonbon dish**, oval form, beaten in relief with fruit and leaf designs, stamped marks .800 Posen for Lazarus Posen, working c.1870-1933. 119gms. \$80

**590**

**An Edwardian miniature silver mustard pot**, pierced decoration, blue glass liner. Birmingham 1902. Diameter 40. \$60

**591**

**A late Victorian miniature silver pepper pot**, in the form of a flour sifter, Chester 1894 by Cornelius Desormeaux Saunders & James Francis Hollings (Frank) Shepherd. Height 30. See page 29. \$100

**592**

**An early George III Onslow pattern soup ladle**, shell form bowl, engraved armorial to the reverse of the finial of a boar's head upon a sword held by a clasped hand. Old repair to bowl fitting. London 1765 by George Baskerville, a noted ladle maker. 161gms. Length 325. See page 29. \$460

**593**

**A set of four George IV silver sauce ladles**, fiddle pattern, matching crest to each of a seated hound supporting a single arrow, fiddle pattern, the three larger hallmarked London 1827, the smaller 1831, all by William Chawner II, a noted spoon maker. 247gms. \$200

**594**

**A boxed pair of heavy silver napkin rings**, engraved vacant wreath cartouche, original box. Birmingham 1910. \$80

**595**

**A silver replica of the 'Earliest Christening Spoon'**, tapered hammered handle and ovoid bowl engraved with the Christogram (PX), in original blue Morocco leather box, complete with details of the spoon history. Length 160. \$90

**596**

**A Victorian silver picture engraved christening mug**, the scene including milk maids, a young gent and farm animals. London 1885 by George John Richards & Edwin Charles Brown. The foot with old repair. 150gms. \$110





597

**A rare Australian Arts and Crafts silver spoon**, hand beaten bowl, the terminal of holly leaves and berries, by Harris & Son. \$80

598

**A set of four Australian Arts and Crafts silver demitasse coffee spoons**, each with various hand-made wildflower finials of stylish design, hammer finished bowls. Stamped with silver and gum-nut mark. Length 11.3. \$320

599

**A pair of late Victorian fancy silver serving spoons in original case**, fluted oval bodies, the decorative handles in the French manner cast with cherubs and scrolls, most gilt remains. London 1896 by Sibray, Hall & Co Ltd. \$160

600

**A pair of Edwardian silver Corinthian column candlesticks**, detachable bead edge nozzles, traditional stepped bases. London 1904 by William Hutton & Sons Ltd. Height 150. \$300

601

**A pair of early 20thC tall silver tall column candlesticks with N.Z. Military history**, fluted baluster form, detachable nozzles, the base of each presentation engraved '... From Father Leo Daly Chaplain To The Forces N.Z.E.F. 1916'. Height 292. Sheffield 1914 by Walker & Hall. See page 29. \$650

602

**A modern limited-edition silver medallion and military badge set 'Great British Regiments'**, the lid to the plaque detailed 'The Birmingham Mint's Tribute to the 52 time-honoured regiments of the line that have passed into legend. Henry Bedford, Set No. 0345. One set of a limited edition of solid silver medallions with insignia', mahogany boxed including three layers. \$2,000

603

**A pair of 19thC Old Sheffield Plate salts**, rectangular boat form with conforming spreading bases, cast gadroon and shell top rims. \$110

604

**A modern silver galleried wine coaster**, turned wooden base. London 1990 by C.J. Vander Ltd. Diameter 132. \$160

605

**A silver 'Gin' bottle ticket**, modelled with mask and scrolling leaves. Birmingham 1961. \$50

606

**A Georgian silver wine funnel**, with gadrooned border and shell tab. London 1824 by John Henry and Charles Lias. \$300

607

**A silver sauce boat**, plain fat-belly form with scalloped rim, scroll handle and hoof feet. London 1925, maker's mark rubbed. 376gms \$180

608

**A Victorian silver scallop butter dish**, Birmingham 1887. Length 130, 77.7gms. \$80

609

**An Edwardian silver decorative rose bowl**, the lower body with repeating shield form relief moulded acanthus

leaf design, spreading circular foot, raised on ebonised turned wood stand. 533gms. Diameter 215. \$400

610

**An Edwardian silver tazza**, the pie-crust rim with scroll and leaf detail, the pierced bowl with star form centre, plain spreading pedestal base. Birmingham 1909 by William Aitkin. 300gms. Diameter 208. \$180

611

**A pair of Edwardian elaborately silver mounted decorative glass vases**, the silver stands with scrolling legs and pierced and embossed frames supporting the lobed ovoid glass bodies with moulded floral scroll decoration, the conforming silver top mounts, one with the flared top rim removed, the other with some damage, a bag of further conforming silver parts included. Heights 243 and 225. Hallmarked London 1899 by William Comyns & Sons. \$250

612

**An unusual small ecclesiastical lidded jar with gilded interior**, London 1966. Height 35. \$80

613

**An early 20thC Dutch silver decanter set**, the stand decorated in the 19thC manner, contains three shaped and etched bottles with conforming silver collars and stoppers, date marked 1928. 140 x 285. \$250

614

**A set of mid-Victorian silver egg cups**, supported on three Georgian style dolphin feet, in original box and each with individual salt spoons. London 1871 by Frederick Elkington. \$180

615

**A silver sugar bowl**, set with an Edward VII Coronation commemorative medallion to the centre. Bearing two sets of hallmarks, Chester 1899 and Birmingham 1901. \$125

616

**A silver lidded cut crystal pin dish**, the lozenge shaped lid with neoclassical foliate decoration. Sheffield 1910. Width 150. \$120

617

**An Egyptian silver charger**, profusely decorated with Egyptian scenes, with scalloped rim, Egyptian silver marks to base. 150gms. \$300

618

**A large Victorian silver plate game cover**, with hanger for wall suspension. 320 x 470. \$180

619

**A pair of early 20thC N.Z. themed tiki silver and greenstone knife rests**, in original fitted box, each silver end with a hei tiki form within an open arched frame, a greenstone cylindrical bar to the centre. Note: the tiki form similar to that used on the N.Z. Railway passes, each end stamped 'STERLING'. Length of each 66. See page 29. \$350

## PERSIAN RUGS

620

**Two kilim cushions.** \$75

621

**Three kilim cushions.** \$100

622

**An old double-sided kilim saddlebag**, with tassels. 460 x 140 x 1400. \$100

623

**A large single kilim saddlebag**, fringed border. 880 x 700. \$75

624

**An old hand-knotted Caucasian rug**, the central field containing five diamond medallions surrounded by floral motifs, in traditional reds and blues. 2470 x 1200. Worn. \$250

625

**A large old hand knotted Persian Hamadan rug**, with central medallions and four corner designs, typical colours on an unusual brown ground. 2900 x 1620. \$450

626

**An old hand-made Chinese wool rug**, the field with three large 'gul' medallions, unusual colours on a pale mushroom coloured field. Some wear. 2300 x 1130. \$200

627

**A hand knotted Persian pictorial rug**, the field decorated with hunting scenes of elephants, tigers, figures, deer, etc., in various colours on a rich red ground. 2120 x 1400. With suspension rod. \$400

628

**A hand knotted Tekke Turkoman tribal rug**, decorated with gul motifs. 1800 x 1000. \$120

629

**A hand knotted Baluchi tribal rug with stylised floral designs**, in colours of dark blue and red. 2000 x 1300. \$250

630

**A hand knotted Persian Hamadan rug**, with a single central medallion in rich dark colours on a red field. 1100 x 2040 \$200

631

**A small modern good quality Chinese handmade all wool rug**, with typical floral designs on a pale ground. 620 x 1250. \$120

632

**A small old handmade Chinese Art Deco all wool rug**, decorated with an Ikebana vase, soft muted colours of black, brown and coral. 1710 x 960. \$200

633

**An old Chinese Art Deco handmade all wool rug**, decorated with an Ikebana vase, rich deep colours of aubergine coral, black and brown. 1700 x 950. \$250

634

**A large good quality handmade Chinese all wool rug**, decorated with birds and flowers on a pale duck egg blue ground. 2500 x 1670. \$550

635

**A large old fine quality handmade Chinese all wool carpet**, with restrained decoration of phoenix birds, butterflies, birds and floral sprays in shades of

brown and blue on a rich cobalt blue ground. 2500 x 3000. \$1,500

**636**

**A small hand knotted Persian Hamadan pictorial rug**, decorated with buildings, birds, animals and flowers, multi-coloured. 1460 x 800 \$120

**637**

**A hand knotted Persian Afshar rug**, with three large medallions, bright vibrant colours including peacock blue and rich deep orange. 2030 x 1260. \$450

**638**

**A small hand knotted Turkoman rug**, with two diamond medallions. 1200 x 650. \$100

**639**

**A good quality modern handmade Chinese all wool rug**, decorated with birds and flowers on a pale green ground. 1900 x 1200. \$350

**640**

**A hand knotted Baluchi prayer rug**, decorated with three rows of gul motifs, various colours on a cerise ground. Minor faults. 1700 x 1030. \$250

**641**

**A hand knotted Baluchi tribal rug**, the field decorated with octagons and multiple narrow border guards in rich dark colours. 2000 x 1100. \$350

**642**

**An unusual hand knotted Turkish patchwork kilim rug**, of various shapes and sizes, tribal colours and patterns. 2270 x 1710. \$900

**643**

**A fine quality finely knotted Persian Isfahan rug**, pure wool and silk, the field decorated with a vase of flowers, birds and animals. 1650 x 1080. \$800

**644**

**An Iranian Herati prayer rug**, the mihrab with a vase of flowers, flanked by columns and further floral patterns, dated 1979 and signed 'Aref'. 2000 x 1200. \$775

**645**

**A large good quality hand knotted Persian Hamadan carpet**, with a single central medallion and four corner designs in rich colours of a red ground. 3050 x 2120. \$750

**646**

**A good quality hand knotted Afghan Turkoman rug**, the field decorated with small gul motifs and multiple border guards in colours of rich red, dark blue and ivory. 2400 x 1630. \$750

**647**

**A large good quality hand knotted Saruqi rug**, the field decorated with rows of gul motifs, multiple narrow guards, in mainly rich red and dark blue. 3000 x 2000. \$1,900

**648**

**A large hand knotted Persian Kashan carpet**, with a single central medallion and four corner designs, in rich colours on a deep red ground. 3200 x 2450. \$1,200

## FURNITURE

**649**

**A Chinese rosewood processional screen in stand**, of fan shape, finely pierced and inlaid with silver wire depictions of gods. A contemporary copy of a Qing Dynasty piece. Height 1130. \$400

**650**

**A vintage nest of four Chinese hardwood side tables** with ornate carved decoration and stretcher bases. The largest table 460 x 350 x 650. Some faults. \$250

**651**

**An old Chinese red lacquer low table**, of traditional design with short well-proportioned cabriole style legs, oblong shape with figural decoration. 890 x 540 x 350. \$150

**652**

**An early Georgian chinoiserie hanging corner cabinet**, of small proportions, the decoration of Chinese figures in a garden in colours of golden red on a black lacquer ground, butterfly hinges and two internal shelves. 540 x 250 x 825. \$350

**653**

**A large late 19thC Japanese ebonised two-fold screen**, ornately carved and pierced, the decoration of cranes and flowering branches in bone and mother-of-pearl. Seal marks. Some losses. Width of each panel 850, height 1850. \$1,000

**654**

**A pair of good quality Chinese hardwood drum stools** of traditional design with profuse floral mother of pearl inlay. Diameter 350, height 450. \$400

**655**

**A Chinese rosewood yoke back two-seater settle**, the back with two splats carved in relief with dragon panels, the seat with upholstered squab, raised on four square legs with in-turned feet. Width 1550. See page 32. \$800

**656**

**A Chinese rosewood coffee table**, the top carved in low relief with dragons embattled over a flaming pearl, the frieze carved and pierced similarly, raised on cabriole legs with mask carved tops terminating in claw feet. Glass topped. 1210 x 620 x 410. \$250

**657**

**A Chinese rosewood 'pagoda' display cabinet**, of hexagonal section with two sides as opening doors beneath an architectural top, the lower section with panels carved with dragons, two panels formed as doors, fitted with three adjustable glass shelves and illuminated. Height 2200, diameter 690. See page 32. \$900

**658**

**A Chinese carved wood life-size figure of Kuanyin**, the Goddess of Mercy, modelled seated upon a plinth base, she holds a mystic pearl in her elevated left hand, her right foot rests upon a lotus flower. Some portions of her robes coloured with remnants of pigment.

Height 1500. With certificates and purchase receipt for \$7200 in 1992. \$800

**659**

**A Victorian duet stool**, the top upholstered with gros point trellis patterned tapestry, raised on X-frame legs joined by turned stretchers. Old repairs. 820 x 560 x 510. \$200

**660**

**A Georgian mahogany tilt-top tripod wine table**, the plain circular top comprising one single piece of mahogany and on pad feet. Some surface marks. Turned column support and pad feet. Diameter 800. \$450

**661**

**A rare William IV rosewood circular teapoy with decorated borders**, tapering octagonal pedestal and a tripod platform base. The top lifting to reveal two tea caddies and two spaces for glass mixing bowls. Diameter 440, height 770. See page 32. \$750

**662**

**A small old walnut writing table of William and Mary style**, decorated with oyster veneers and inlaid decoration, on tapering legs with X-stretcher base, the top lifting to reveal the original fitted interior. Some distress. 520 x 400 x 640. \$350

**663**

**A vintage oak stool with turned and fluted legs**, needlework tapestry top and turned X-stretcher. Length 580. \$200

**664**

**An Edwardian mahogany Sheraton Revival table vitrine** of plain oval shape decorated with boxwood stringing on four elegant tapering square section legs with platform base. 680 x 440 x 740. See page 29. \$300

**665**

**A decorative metal lined dome top casket shaped storage box**, with ornate embossed all-over floral decoration and stylised dragon head ring handles. 600 x 420 x 550. \$350

**666**

**A mahogany Chippendale Revival tray top serpentine side table**, with ornate pierced gallery and ornate pierced X-stretcher base. Some surface marks. 860 x 480 x 720. See page 29. \$400

**667**

**A Regency mahogany library chair**, scrolling decoration to arms, tulip decoration to front legs, brass casters, upholstered in a black, grey and cream geometric fabric. 600 x 700 x 1000. See page 29. \$650

**668**

**A Victorian framed salon chair**, with rose coloured brocade covers to back and seat. Some wear. \$200

**669**

**A large, deep burgundy leather, wing back armchair**, deep buttoned and studded, short cabriole front legs. The loose cushion with signs of wear. \$500

**670**

**A pair of large gilt wing back armchairs** of French style with leaf, flower and scroll decoration, short cabriole front legs and studded upholstery. Both require re-covering. See page 29. \$1,600

671

**A good early 20thC French carved beech framed, caned and upholstered duchesse brisée** (bergere chair and matching ottoman), the wing back chair with restrained floral and scroll carved detail, caned panels to the sides and back; contemporary upholstery to the interior arms, rests, loose back cushioned seat and ottoman in a fine banded silver metallic foil and dark taupe slubby linen. Total length 1830. See page 29. \$1,200

672

**A 19thC French walnut open elbow chair of Louis XV style** with cartouche back, serpentine front, cabriole front legs and floral needlework covers. \$250

673

**A large French style armchair and matching ottoman stool**, cabriole legs, sculptured green velvet covers with two loose fitted cushions and a small single cushion. \$750

674

**A French style canapé**, the decorative gilt frame upholstered in a self-patterned deep ivory brocade. 1230 x 630 x 950. \$700

675

**An American oak Globe-Wernicke sectional bookcase**, three glass fronted shelves, drawer to the base, with original labels. 760 x 310 x 1340. \$650

676

**A Georgian mahogany hanging corner cabinet with a single glazed door**, the pale green painted interior with two shelves, single drawer in base. 820 x 480 x 1030. \$350

677

**A Georgian mahogany fall-front bureau**, with four graduated full width drawers, brass bale handles, keyhole escutcheons, fitted interior and bracket feet. 840 x 480 x 1030. See page 29. \$1,200

678

**A Queen Anne double-dome bureau bookcase**, the double domed top above cross-banded glazed doors, the base section with the fall-front opening to reveal a fitted interior above five small drawers. Raised on baluster form legs joined by a serpentine flat shaped stretcher base with bun feet, c.1705. Some distress. 100 x 50 x 222. See page 29. \$4,000

679

**An elegant Edwardian mahogany display cabinet**, of restrained Art Nouveau style with two bevelled glazed doors and glazed sides, the top with open shelf, twin mirrors, restrained inlay and a simple arched pediment, two internal glass shelves and pad feet. 900 x 380 x 1890. \$1,200

680

**A large early 20thC European walnut display bombe cabinet**, the scroll carved pediment top above two shaped glazed panelled doors, enclosing fitted shelves, the bombe base with two short above two full width drawers, shaped pediment, lions' paw front feet. Pleasantly faded. 2000 x 550 x 2350. See page 32. \$1,800

681

**An early 20thC European figured walnut bookcase bureau**, similar to above, the back with two panelled doors enclosing a fitted interior, the forefront above a three-drawer configuration. 1240 x 700 x 2200. See page 32. \$750

682

**A modern chinoiserie bureau bookcase**, the top with two shaped doors opening to reveal shelves, with broken arched pediment and central finial, the base with drop front bureau containing pigeon holes and drawers over two half and two full width drawers. 960 x 440 x 2330. \$675

683

**A French fruitwood country dining table**, plank top with clenched ends, on tapering legs with stretchers to each side, pegged construction. 1700 x 750 x 760. See page 32. \$1,800

684

**A French fruitwood hall table**, two drawers to the front, chamfered solid legs with stretcher to each side, pegged construction. 1400 x 500 x 760. See page 32. \$1,500

685

**A vintage mahogany kidney shaped pedestal desk** with French style gilt metal mounts and two blue and white jasperware plaques. With keys. Some surface marks. 1150 x 650 x 760. \$700

686

**A large European walnut desk**, the leather inset top surmounted by a superstructure of divided shelves in a tiered configuration, the top raised on two banks of deep drawers, a full width cupboard sited to the back. 1570 x 930 x 180. \$550

687

**A late 19thC small old oak chest of four drawers**, with full column mouldings, concaved top drawer, pierced gallery, short tapering square section legs and ornate brass handles and keyhole escutcheons. 840 x 430 x 960. See page 32. \$500

688

**A 19thC teak two-stage military chest**, the five drawers with recessed brass handles, each section with iron side handles, raised on short turned legs. Some surface marks and top drawer locks have been replaced. 1070 x 440 x 1070. See page 32. \$1,500

689

**An early 20thC German walnut bombe commode**, matching above. 1140 x 600 x 800. Some marks to cross-banded top. \$350

690

**A colonial kauri scotch chest**, with a traditional hat box drawer to the centre and two half drawers either side, over three full width drawers, plinth base with half columns with decorative feature to each side. Unusual panelled sides. 1110 x 400 x 1270. \$950

691

**A late 19thC French mahogany étagère**, of three oblong tiered shelves raised on turned supports, the top tier with cut

brass inlay and stringing and frieze drawer. 480 x 380 x 925. \$225

692

**A European pine bookcase chiffonier**, the upper section with two glazed doors, the lower section with two drawers above two cupboards. 1160 x 480 x 2450. \$750

693

**An antique French three-fold glass and velvet screen**, shaped top with bevelled glass, on small casters, the base with embroidered gilt decoration, some distress. 1610 x 1450. \$350

694

**A modern kingwood commode of French style**, with three drawers and a shaped variegated white and red marble top, banded and inlay decoration, gilt metal mounts and classical ring handles, raised on four tapering square section legs. 1060 x 460 x 920. See page 32. \$950

695

**A contemporary display cabinet**, the highly grained timber frame with glass doors and sides, mirror back and internal lighting, cream zebra strip and conforming wood pediment, with internal glass shelving. 920 x 430 x 1900. \$2,000

696

**A stylish modern silver finish two door cabinet**, with panelled designs to the front, back and sides, on four short feet, a single internal shelf and two angular handles. 930 x 460 x 1000. \$500

697

**A stylish modern black 'crocodile skin' two door cabinet** raised on two angular metal frames (one at each end) and a silvered metal crocodile handle, single internal shelf. 1200 x 480 x 103. \$750

698

**A modern decorative Egyptian Revival stool with scroll ends**, swan neck style legs and sculptured black velvet covers. \$450

699

**A contemporary chaise longue**, the padded frame upholstered in crimson silk, the seat and cushion in a gold and black Versace fabric. With matching crimson bolster cushion. 1760 x 790 x 800. Retail price \$1,200

700

**A fine quality modern Italian 'Flexform - Happy' three-seater sofa and a pair of matching side chairs designed by Antonio Citterio**, basket weave backs, polished stainless steel flat bar frames and the highest quality leather mocha brown loose cushions and bolsters. \$3,000

701

**A contemporary two-piece ebony coffee table**, the two separate tables form one. Each 930 x 500 x 360. Retail price \$1760 \$650

702

**A European walnut coffee table**, the lozenge shape top raised on four ram's head carved legs terminating in hoofed feet, a lower conforming lozenge shaped tear inset with Wycombe cane panel. Pleasantly faded. 800 x 550 x 590. See page 32. \$450



703

**A pair of impressive French 19thC church pricket candlesticks**, the tall brass stands decorated in the rococo style, on tripod bases. 1000 x 250. See *inside back cover*. \$450

704

**A pair of tall mahogany torchieres**, of classical fluted bulbous column style, with dished circular plinth tops and tripod bases. Height 1460. \$900

705

**A pair of antique style bronzed table lamps**, a child holds a bunch of flowers on a conforming base, with a frilled frosted glass shade. Height 580. \$200

706

**An Art Nouveau bronze table lamp**, the urn form base with the figure of cupid whispering in the ear of a semi-robed woman, brass side handles, with fringed shade. Height 520. \$250

707

**A vintage French wrought iron painted chandelier**, the three light branches decorated with leaves and flowers, conforming central column leading to flower form ceiling rose, 300 x 580. \$250

708

**A Georgian mahogany long case clock**, arch hood with brass finials, arched brass dial with gilt spandrels and dolphin frets, engraved silvered chapter ring, strike/silent ring in arch, signature plaque and date ring visible through dial aperture. The chapter ring with unusual arcaded minute track framing large 5-minute numerals and half-hour fleur-de-lis marks. The finely punched dial centre with ringed winding holes. The dial signed Geo. Yeats, Maldon. Blued steel hands, the movement with anchor escapement striking on bell, overhauled and in running order, keys and winder. Height 2170. \$2,500

709

**A decorative French style bracket clock raised on stand**, the clock with decoratively painted black crackle ware case, surmounted by a gilt metal cherub and with gilt metal mounts, raised on a tall plinth with red marble top (repair to corner of marble). Height 1950. See *page 32*. \$650

710

**A large modern elaborate mirror of French baroque style**, three mirror panels the frames lavishly gilded with ornate leaves, flowers, scrolls and swags. \$1,500

711

**A large and ornate moulded framed overmantel mirror**, the frame with silvered finish, with decorative elements of neoclassical design including acanthus and laurel leaves between echinus and ribbon borders. 2160 x 1150. \$650

712

**A late Georgian mahogany box-based toilet swing mirror**, with three drawers in the base. Height 540. \$125

713

**A 19thC German Biedermeier tall free-standing pier mirror**, the three-section rectangular form mirror in restrained

moulded frame with inlaid detail, the supporting base with serpentine shelf flanked by flared supports. 1040 x 320 x 2510. \$1,200

714

**A pair of small cast iron garden urns**, campana shape, 200 x 250. \$180

## FINE ART

715

**Winifred Marie Louise Austen (UK 1876-1964)**, 'The Country Mouse', etching and aquatint, signed, entitled and artist's address label verso. 130 x 100. \$125

716

**19th century artist unknown**, Garden scene with domestic and wild birds, watercolour. 160 x 210. \$100

717

**F. Pearson**, 'A Scottish Loch', watercolour, signed. 295 x 480. \$150

718

**Lionel Arthur Lindsay (Aust. 1874-1961)**, 'The Bridge, Estremadura' etching, signed, 170 x 250; together with Aileen Mary Elliot (U.K. 1896-1966), 'The Cutty Sark' etching, signed and dated 1926, 290 x 260. \$225

719

**Hedley Fitton (U.K. 1859-1929)**, 'A Parisian Street Scene', etching, signed, 360 x 190; together with William Palmer Robins, U.K. (1882-1959), 'Windmills' etching, signed and dated 1924. 170 x 270. \$200

720

**William Lionel Wyllie (1851-1931)**, - two works - 'The Thames with St Paul and Monument' etching, signed, 160 x 370; together with 'The Thames at Windsor' etching, signed, 160 x 370. \$200

721

**F.E. Harper**, 'The Haymakers', oil on canvas, signed. 400 x 600. \$250

722

**Artist unknown**, Coastal scene, watercolour, unsigned. 385 x 590. Oval. \$225

723

**Attributed James Hewlett (UK 1768-1836)**, Floral still life, watercolour. 215 x 175. \$100

724

**A Victorian still life watercolour**, of grapes, pineapple and pomegranate with a Chinese vase. Unsigned. In ornate gilded moulded frame. Overall 565 x 685. \$200

725

**School of Federico Zuccaro (c.1543-1609)**, Coronation of a Saint, ink and brown wash. The Folio Society stock label verso referencing collection stamps on lower mount: Collections of Jules Dupan, Geneva [Lugt 1440] and Peter Vischer-Sarasin, Bâle [Lugt 2115]. 130 x 90. See *inside back cover*. \$400

726

**Attributed Pierre Subleyras (French 1699-1749)**, The Holy family with Angels, red chalk drawing. The Folio Society typescript stock label verso. 260 x 135. See *inside back cover*. \$400

727

**Attributed Luca Giordano (Italian**

**1632/34-1705)**, Madonna and Child with a King, red chalk, brown ink and brown wash. Catalogue clipping verso with note: Attributed by Christie's 1990. 415 x 255. See *inside back cover*. \$600

728

**Italian School 17thC**, Virgin and Child, dark brown ink drawing. The Folio Society stock label verso. Oval. 135 x 105. See *inside back cover*. \$150

729

**North Italian School 16thC**, The Virgin and Child with Two Angels, brown ink and wash, c.1570. The Folio Society typescript stock label verso. 180 x 130. \$200

730

**Attributed Michiel Carré (Dutch 1657-1727/47)**, Herdsman and Beasts at a River, brown ink and wash. The Folio Society typescript stock label verso. 155 x 210. \$300

731

**Antoine Le Loup (Belgium 1730-c.1820)**, 'Vue du Canal Proche de Harlem' and 'Vue des Environs de Rotterdam', two ink and wash drawings, each entitled, signed: antoine Le Loup De Spa fecit 1784. 150 x 215. See *back cover*. \$350

732

**Artist unknown**, Portrait of The Infanta Isabel Clara Eugenia after the original by Sánchez Coello of 1579 in the Prado, oil on canvas, unsigned. Original vintage frame with minor distress. 1020 x 890. See *inside back cover*. \$750

733

**Piero Fornasetti**, 'Pistole', original zinc production plate, c.1950s, entitled to the front and stamped 'copyright Fornasetti', the reverse with stencilled and hand numbered detail and numbering and applied copyright label 'this original artwork is protected by copyright... without prior permission in writing from Fornasetti'. 455 x 560. Note: These original zinc plates were used to apply the design to table lamps. Each with handwritten notes and cataloguing stamps. They are recorded as 'important historical ephemera'. See *inside back cover*. \$3,500

734

**Piero Fornasetti**, Untitled globes, sun and moons with various trajectories, zinc production plate, similar to above. 500 x 500. \$2,000

735

**Cedric Savage (1901-1969)**, 'Mediterranean Market Scene', watercolour, signed. 500 x 635. \$700

736

**John Copley (1875-1950)**, 'Alassio (In The South)' lithograph, signed and inscribed in pencil, on Japan paper. 430 x 305 \$100

737

**William Heaton Cooper (UK 1903-1995)**, European Lake and Mountain Landscape with Village, watercolour, signed. 360 x 535. \$200

738

**Harry Hugo Tombs (1874-1966)**, 'Down the Valley', aquatint etching, signed and entitled. 225 x 160. \$250



739

**George Woods**, Torso and Three Heads, sketch in pencil and biro. 190 x 150. \$400

740

**Conway Lloyd Jones (UK 19thC)**, River landscape, watercolour, signed and dated 1886. 340 x 510. \$120

741

**Gerardo Guilio de Simone**, two Parisian Street Scenes, oils on canvas, each signed. Each 420 x 260. \$250

742

**A. de Fasco**, 'Parisian Street Scene', oil on canvas, signed. 490 x 690. \$250

743

**Artist unknown**, Italian capriccio landscape with buildings, oil on board, signed indistinctly. 385 x 280. \$125

744

**William Robert Browning (Bob) Watson (1911-2001)**, 'Winter Landscape Norfolk', oil on board, signed. 340 x 440. See *inside back cover*. \$200

745

**A posthumous portrait of F.W.P Alderton**, in the uniform of a Bluecoat School, London, at 14 years of age, c.1856, who died by accidentally shooting himself with his toy cannon. A newspaper clipping of the coroner's report affixed verso. 445 x 295. \$175

746

**Richard Parker Bonington (U.K. 1801-1828)**, an architectural study (buildings and canal), graphite and white resist on browned paper. Unsigned. Thomas Agnew & Sons stock label verso, inscribed verso: Bought Sotheby Nov 1953. 150 x 120. \$200

747

**Artist unknown**, Lord Byron after the portrait by Thomas Phillips, oil on board. 230 x 175. \$150

748

**Henry Mount Langton Atcherley (1863-1901)**, 'Sydney Harbour Heads with Figures', watercolour, signed. Repair to paper. 75 x 150. \$300

749

**Erik Langker (Aust. 1898-1982)**, Australian Landscape, oil on board, signed. 355 x 430. \$200

749A

**Arnold Henry Jarvis (Aust 1881-1959)**, Australian landscape with gums, watercolour, signed. 365 x 500. \$150

750

**Teuane Tibbo**, 'Hibiscus', oil on board, signed, entitled on reverse. Note: Tibbo (1895-1984), a self-taught Samoan artist rose to art stardom in the early 1960s when her primitive folk style was critiqued as 'a special case, a charming primitive'. Her works were exhibited alongside those of McCahon, Hanly, Illingworth and others, it is recorded that 'the Auckland art community of the period created a space for her painting within the domain of Fine Art because folk art, such as that produced by Tibbo, in all its unpretentious, unlearned splendour, fed directly into the anti-establishment, anti-capitalist mood of the times', taken from Art New Zea-

land 'Between Fine Folk, The Paintings of Teuane Tibbo' by Bronwyn Fletcher, published summer 2002-03 #105. Provenance: From the estate collection of Joy and Denis Hanna. 560 x 685, original frame. See *inside back cover*. \$1,500

751

**A 19thC German marble bust of a gentleman**, signed indistinctly, raised on ebonized plinth. Height 500. With book 'Bismark, the Story of a Fighter' by Emil Ludwig. \$300

752

**Geoff Thomson corrugated iron artwork**, with stencilled decoration of various N.Z. flora and fauna, in reds, blues, greens and oranges on a white ground. 780 x 1100. See *inside back cover*. \$850

753

**Geoff Thomson corrugated artwork**, double-sided, decorated with N.Z. flora and fauna in bright colours on a white ground, with decorative cut-outs. 550 x 1170. \$850

754

**Geoff Thomson corrugated iron artwork**, similar to above. 560 x 1270. See *inside back cover*. \$850

755

**Geoff Thomson corrugated iron artwork**, similar to above, with diagonally shaped top. 570 x 1040. See *inside back cover*. \$650

756

**Geoff Thomson corrugated iron artwork**, in Koru form, painted with N.Z. flora and fauna. 280 x 510. See *inside back cover*. \$700

757

**Geoff Thomson corrugated iron artwork**, in Koru form, similar to above. 320 x 700. See *inside back cover*. \$1,000

758

**Geoff Thomson corrugated iron artwork**, Koru form, with original weathered patina and scratched designs, with signature and date punched out to one side. 460 x 900. \$850

759

**Sue Collins sculpture**, 'Beware the Light at the End of the Tunnel', ceramic figure on street sign, with biographical information and artist statement on piece, together with receipt. 390 x 610. \$350

760

**Trevor Lloyd**, 'Three Veterans' etching, signed and entitled. Original oak frame, some foxing. 260 x 160. \$200

761

**George Chance**, 'The Sunlit Gums', photograph with tinted colour, signed and entitled. 310 x 230. \$150

762

**George Chance**, 'National Park - Tongariro', photograph, signed and entitled. 205 x 255. \$150

763

**Russell Hollings**, 'Gardenia & Pears', oil on board, signed, entitled on reverse. 835 x 425. See *inside back cover*. \$400

764

**Russell Hollings**, 'Corner of the Studio', oil on canvas board, signed, entitled and inscribed on reverse. 500 x 600. See *inside back cover*. \$500

765

**Russell Hollings**, 'The Brown Coffee Pot', pastel on paper, entitled, signed and detailed on reverse. See *inside back cover*. \$500

766

**Russell Hollings**, 'Sunlight + Shadow - Kawakawa Bay' watercolour, signed, entitled on reverse. 520 x 710. See *inside back cover*. \$700

767

**William Menzies Gibb**, 'Estuary Landscape', watercolour, signed. 170 x 245. \$200

768

**William George Baker**, 'Titahi Bay', oil on canvas, signed and entitled. 290 x 440. See *back cover*. \$225

769

**William George Baker**, 'Bush Road West Coast', oil on canvas, signed and entitled. 590 x 895. See *back cover*. \$1,000

770

**Douglas Badcock (1922-2009)**, West Coast Seascape, oil on board, signed and dated '73. 450 x 600. See *back cover*. \$1,200

771

**Charles Nathaniel Worsley**, 'Mitre Peak from the Cleddau River', signed. 190 x 280. \$500

772

**Charles Nathaniel Worsley**, 'Exeter from Canal', watercolour, signed and entitled. 150 x 215. \$500

773

**Helen Brown (1917-1986)**, 'Headlands and Island', watercolour, signed, c.1975. 150 x 360. See *back cover*. \$300

774

**Simon Will**, 'Morning Sailing', oil on board, signed, entitled and detailed on reverse. 658 x 215. See *inside back cover*. \$300

775

**Lance O'Gorman**, 'Days Gone By', oil on board. 345 x 580. \$250

776

**Lance O'Gorman**, 'Landscape with country church and figures', oil on board, signed. 390 x 490. \$400

777

**Aston Greathead (1921-2012)**, 'Haast Pass', oil on board, signed and dated '71. 270 x 395. \$250

778

**Ken J. Andrews**, 'Lake Tekapo', oil on board, signed. 190 x 240. \$100

779

**Allan Crombie**, 'Old Farm Buildings, Alexandra, Central Otago, oil on board, signed, entitled and dated 1990 verso. 315 x 395. \$250

780

**Michael F Soper**, 'Cecil Peak from Twelve-mile Creek' (Lake Wakatipu), oil on board, signed. 370 x 495. \$200

781

**Graham Brinsley**, 'Lake Hayes' (Towards Coronet Peak), oil on board, signed. 445 x 595. \$300

782

**Ernest William Christmas (1863-1918)**, The Remarkables from Frankton, watercolour, signed. 305 x 460. \$200



- 783**  
**A.J. Andrew**, 'Snow in the Godley, Tekapo', oil on board, signed, entitled and dated 1978 verso. 390 x 590. \$200
- 784**  
**Cyril Whiteoak**, 'Southern Lake Scene', watercolour, signed and dated 1991. 365 x 545. \$150
- 785**  
**Dean Biuchanan**, Kaleidoscopic Titirangi Landscape, oil on linen, signed and dated '08. 1010 x 1400 (oval). Unframed. \$2,000
- 786**  
**Ben Webb**, 'I Have You at the Throat by Your Beauty', pigment ink print and watercolour, signed and dated '09, signed, dated 2-11-09 and entitled on reverse. 920 x 670. Note: Webb held a major exhibition in Dunedin in early 2009 entitled 'I Have You at the Throat by Your Beauty'. the artist is recorded saying 'it (the exhibition) will have a non-New Zealand basis. It's all being sourced from a large visual archive I worked on in Germany and Eastern Europe', 'I sifted through thousands of fleamarkets and photo archives, all the images are from things I have found. There might be one in a thousand images I can use'. See back cover. \$850
- 787**  
**Ben Webb**, 'Untitled Hand Study', pigment ink print, signed, dated 10-11-11 and inscribed, image size 260 x 166. See back cover. \$600
- 788**  
**Ben Webb**, 'Skull & Scissors', mixed media on canvas, signed to the reverse. Provenance: Purchased direct by our vendor from the artist. 1015 x 670. See back cover. \$2,000
- 789**  
**Ben Webb**, 'Jelly Fish', pigment ink print and watercolour, signed and dated 2010. 1025 x 745. See back cover. \$1,000
- 790**  
**Don Binney**, 'Project 85 Fragment', collage and mixed media on paper, signed, dated 1994 and entitled. Provenance: Gifted to our vendor by the artist subsequent to it being exhibited in the 'A4' show of works by the Elam School of Fine Arts staff held in the Fine Arts Library, our vendor was then a library assistant and friend of the artist. 203 x 285. See back cover. \$1,500
- 791**  
**Peter Cleverley**, 'Off the Back of a Truck', applied and erased charcoal pencil on card, title inscribed, signed and dated 2006. 125 x 220. \$200
- 792**  
**Tracey Tawhaio**, 'Cruel Mouth, Kind Eyes', acrylic on three pages of the New Zealand Herald, signed, entitled and dated 2002 verso. 580 x 1230. \$400
- 793**  
**Margaret Lawlor-Bartlett**, 'Mother, Child and Bomb', collage, monoprint and Xerox, signed and dated '83, entitled verso. 69 x 495 \$150
- 794**  
**Peter O'Hagan**, 'Our Cabana, The Ex-celsior - Lido de Venezia', watercolour and gouache, signed, entitled on gallery label verso. Exhibited: Artist Gallery - 'A Journey to Italy, 1992'. 760 x 550. \$650
- 795**  
**Alexis Hunter**, "Mouse At Night", acrylic on paper, Signed and dated '87, 200 x 230. Provenance: Ex. the collection of the artist. See back cover. \$350
- 796**  
**Grahame Sydney**, 'Rozzie Sunning', etching, artist's proof, signed, entitled and inscribed, dated 23-2-76 in the plate. 102 x 120. See back cover. \$300
- 797**  
**Arthur J. Inglis**, 'Townscape, Wynyard Street', oil on board, signed and dated 1937. 405 x 570. \$250
- 798**  
**Arthur Dagley**, Untitled abstract landscape, acrylic on paper, signed. 448 x 438. See back cover. \$450
- 799**  
**Richard Smith**, 'Old Tauranga (Commercial) Wharf (Beacon Services)', acrylic on paper, signed and dated '88. 435 x 380. See back cover. \$500
- 800**  
**Kate Jones-Madill**, 'Dockyard & Working Boats', watercolour and acrylic on paper, signed, entitled and labelled on reverse. 1020 x 750. See back cover. \$500
- 801**  
**John Holmes**, 'Left to the Elements, East Coast', acrylic, signed, entitled on reverse. 410 x 575. \$150
- 802**  
**John Douglas Perrett**, 'Mt Cook', oil on canvas board, signed. 235 x 382. \$350
- 803**  
**Russell Hollings**, 'Through the Trees, Westland', oil, signed, entitled and dated 1970 verso. 240 x 345. \$180
- 804**  
**E. Mervyn Taylor**, 'Parawai Church, Thames', ink and brown wash, entitled, signed and dated. 180 x 255. \$150
- 805**  
**Ivan Clarke**, 'Stirling Falls, Milford Sound', oil on canvas, signed. 500 x 400. See back cover. \$1,000
- 806**  
**Peter McIntyre**, 'Rangitikei River' proof print, signed in ink. 265 x 255. \$100
- 807**  
**John Barr Clarke Hoyte (1835-1913)**, Landscape with Waterfall and Figures, watercolour, signed. 370 x 295. \$2,250
- 808**  
**George Woods**, Driftwood (in the manner of Eric Lee Johnson, sketch in coloured pencils. 200 x 240. \$400
- 809**  
**Stewart Bell MacLennan (1903-73)**, 'Day at the Zoo' lithograph 7/12, and Untitled (Characters and Calligraphy) lithograph Version 6, both signed. Each 450 x 330. \$400
- 810**  
**Alice F. Whyte (1880-1952)**, Moored boats, Auckland Harbour, watercolour, signed. 360 x 260. \$200
- 811**  
**Jan Nigro (1920-2012)**, 'Landscape and Lily', graphite, signed and dated '70. 410 x 550. \$150
- 812**  
**Attributed F.O. Bianchi**, Bush Stream, oil on canvas, initialled lower left \$
- 813**  
**Harry Smith**, 'High Country Landscape', acrylic on board, signed and dated 1971. 600 x 900. \$150
- 814**  
**Gary Tricker**, 'Silver Tea', etching 6/50, signed, entitled and dated '04. 180 x 155. \$100
- 815**  
**Gary Tricker**, 'Summer Pendulum', etching, artist's proof, signed, entitled and dated 1975. 330 x 310. \$100
- 816**  
**Gary Tricker**, 'Sings Harry', etching, 20/50, entitled, signed and dated. 240 x 510. \$180
- 817**  
**Mary Foreman**, 'Woodcut I', woodcut, Edition 2/10, signed, dated '87 and entitled. 640 x 405. \$300
- 818**  
**Stewart MacLennan**, 'Hither & Thither', signed, numbered 1/25, entitled and signed verso. 155 x 135. \$110
- 819**  
**Suzanne Goldberg**, White Bird, oil on board, signed and dated '72. 850 x 595. \$200
- 820**  
**Lois McIvor**, Green Hills and Sky, acrylic on paper, signed and dated '73. 310 x 355. \$260
- 821**  
**Murray Grimsdale (b.1943)**, 'Ria Blassis' (a portrait), ink and wash, signed, entitled and dated 1970. 335 x 225. \$200

END OF SALE



687



683



684



688



661



694



702



679



708



690



680



681



657



709



32



655

— Prices realised (hammer price) Cordys 27th February 2018 Antique & Art Auction —

LOT	\$	LOT	\$	LOT	\$	LOT	\$	LOT	\$	LOT	\$	LOT	\$	LOT	\$	LOT	\$
Lot .....	Price	101.....	\$400	203.....	\$200	300.....	\$60	419.....	\$900	509...	\$1,200	603.....	\$300	697.....	\$200	786.....	\$300
2.....	\$160	102.....	\$325	204.....	\$200	305.....	\$500	420.....	\$200	510.....	\$900	604.....	\$240	699.....	\$500	787.....	\$220
4.....	\$170	103.....	\$650	204A...	\$150	307.....	\$200	421.....	\$375	511.....	\$475	605.....	\$120	700.....	\$300	788.....	\$500
6.....	\$200	104.....	\$150	208.....	\$170	308.....	\$150	422.....	\$200	514.....	\$50	606.....	\$225	702.....	\$300	790.....	\$150
7.....	\$200	105.....	\$450	209.....	\$170	309.....	\$440	423.....	\$400	516.....	\$250	608.....	\$210	706.....	\$425	791.....	\$600
9.....	\$150	107.....	\$70	210.....	\$250	310.....	\$100	424.....	\$300	517.....	\$150	609.....	\$140	707.....	\$300	793.....	\$285
10.....	\$400	108.....	\$180	211.....	\$220	311.....	\$140	425.....	\$620	518.....	\$395	610.....	\$100	708...	\$6,000	794.....	\$200
14.....	\$500	109.....	\$1,750	212.....	\$110	312.....	\$50	426.....	\$500	519.....	\$400	614.....	\$500	709.....	\$900	795.....	\$50
15.....	\$240	111.....	\$500	214....	\$1,600	313.....	\$200	427.....	\$900	520....	\$1,850	615.....	\$425	710.....	\$450	796.....	\$60
17.....	\$160	115.....	\$600	215....	\$1,500	314.....	\$140	428.....	\$450	521.....	\$800	616.....	\$475	712....	\$1,200	797.....	\$250
20.....	\$240	116.....	\$400	216.....	\$140	315.....	\$290	431.....	\$140	523.....	\$475	617.....	\$500	713.....	\$400	800.....	\$60
25.....	\$700	117.....	\$625	217.....	\$150	316.....	\$140	432.....	\$110	524.....	\$750	619.....	\$220	714.....	\$420	801.....	\$300
26.....	\$320	120.....	\$300	218.....	\$525	319.....	\$100	433.....	\$80	525.....	\$450	622.....	\$700	715.....	\$420	808...	\$5,600
27.....	\$450	123.....	\$1,650	219.....	\$180	320.....	\$120	434.....	\$800	526.....	\$200	623.....	\$400	716.....	\$350	809...	\$1,200
28.....	\$350	124.....	\$340	220.....	\$190	322.....	\$950	435.....	\$200	527....	\$8,350	626.....	\$650	716A...	\$350	810.....	\$245
29.....	\$280	125.....	\$110	221.....	\$400	323.....	\$180	436.....	\$130	528...-	\$1,400	628.....	\$300	717.....	\$210	811.....	\$150
30.....	\$140	128.....	\$100	222.....	\$180	324.....	\$160	437.....	\$130	529...-	\$1,900	629.....	\$100	718.....	\$660	812.....	\$325
31.....	\$180	131.....	\$600	223.....	\$300	325.....	\$250	438.....	\$90	530.....	\$800	630.....	\$270	719.....	\$900	816....	\$1,500
33.....	\$240	132.....	\$400	226.....	\$75	326.....	\$350	440.....	\$140	531...-	\$1,400	631.....	\$450	720.....	\$425	819.....	\$60
34.....	\$250	133.....	\$225	227.....	\$150	329.....	\$220	441.....	\$210	532....	\$2,100	632.....	\$180	721.....	\$925	820.....	\$60
35.....	\$650	134.....	\$700	228.....	\$200	330.....	\$180	442.....	\$240	533.....	\$600	633.....	\$225	722.....	\$120	821....	\$2,900
36.....	\$80	136.....	\$800	229.....	\$90	332.....	\$150	443.....	\$240	535.....	\$500	634.....	\$540	723.....	\$325	822....	\$1,600
37.....	\$210	137.....	\$300	230.....	\$50	333.....	\$340	444.....	\$150	536.....	\$800	636.....	\$170	724.....	\$800	824.....	\$700
38.....	\$180	138.....	\$375	231.....	\$120	334.....	\$185	445.....	\$400	537...-	\$1,300	637.....	\$110	725.....	\$450	825.....	\$900
39.....	\$170	139.....	\$450	233.....	\$90	335.....	\$195	446.....	\$825	538...-	\$1,200	639.....	\$950	726.....	\$200	826.....	\$900
40.....	\$85	140.....	\$220	235.....	\$80	336.....	\$800	450.....	\$260	540...-	\$1,000	641...-	\$1,000	727.....	\$400	829.....	\$240
41.....	\$525	141.....	\$140	236.....	\$40	337.....	\$150	451.....	\$300	544....	\$1,200	642....	\$2,000	728.....	\$285	832.....	\$330
42.....	\$160	142.....	\$100	240.....	\$70	338.....	\$150	452.....	\$170	545...-	\$8,000	643.....	\$110	728A...	\$130	836.....	\$120
43.....	\$700	145.....	\$80	243.....	\$60	339.....	\$240	453.....	\$850	548...-	\$5,900	644.....	\$350	728B ...	\$210	838.....	\$250
45.....	\$2,000	149.....	\$480	244.....	\$60	340.....	\$110	454.....	\$180	549.....	\$800	645.....	\$575	729...-	\$1,050	840.....	\$70
46.....	\$290	150.....	\$120	246.....	\$70	342.....	\$240	455.....	\$240	551...-	\$6,500	646.....	\$525	730.....	\$400	841.....	\$60
47.....	\$225	154.....	\$320	248.....	\$180	343.....	\$100	456.....	\$300	555.....	\$150	647.....	\$260	732.....	\$700	842.....	\$100
48.....	\$200	155.....	\$110	249.....	\$200	344.....	\$190	457.....	\$300	555A...	\$230	648.....	\$350	733.....	\$300	844.....	\$120
50.....	\$700	156.....	\$130	250.....	\$100	345.....	\$200	458.....	\$450	556.....	\$80	650.....	\$275	734...-	\$2,400	845.....	\$250
51.....	\$1,200	157...-	\$1,000	251.....	\$110	346.....	\$180	459.....	\$130	557.....	\$360	651...-	\$2,500	735.....	\$475	846...-	\$2,300
52.....	\$220	158.....	\$200	252.....	\$110	347.....	\$120	460.....	\$220	558.....	\$80	652...-	\$7,000	736.....	\$800	847...-	\$2,500
53.....	\$280	159.....	\$140	253.....	\$110	348.....	\$140	461.....	\$210	559.....	\$90	652A...	\$550	737.....	\$225	848...-	\$1,250
55.....	\$300	160.....	\$60	254.....	\$150	349.....	\$150	462.....	\$410	560.....	\$120	653.....	\$450	740.....	\$230	849.....	\$475
56.....	\$170	162.....	\$60	255.....	\$80	350....	\$4,000	463.....	\$390	562.....	\$100	654.....	\$525	741.....	\$280	850.....	\$750
57.....	\$230	163.....	\$250	256.....	\$110	352.....	\$900	464.....	\$340	564.....	\$275	655.....	\$240	742.....	\$425	851.....	\$450
58.....	\$1,000	164.....	\$200	257.....	\$90	353.....	\$180	465.....	\$480	565.....	\$440	656.....	\$700	743.....	\$500	853.....	\$320
59.....	\$300	165.....	\$200	258.....	\$180	354....	\$1,000	466.....	\$410	566.....	\$600	657.....	\$200	744.....	\$240	854.....	\$190
60.....	\$150	166.....	\$120	259.....	\$250	356.....	\$360	467...-	\$1,700	567...-	\$1,300	657A \$2,100		745...-	\$2,100	855...-	\$1,000
62.....	\$90	167.....	\$280	260.....	\$170	358.....	\$310	468.....	\$430	568.....	\$750	657B ...	\$550	746.....	\$800	856.....	\$500
64.....	\$120	168.....	\$170	262.....	\$180	359.....	\$120	469.....	\$260	569.....	\$250	658 \$40,000		747.....	\$800	857...-	\$4,000
65.....	\$660	169.....	\$690	263.....	\$240	360.....	\$80	470.....	\$610	570...-	\$1,200	659.....	\$475	748.....	\$475	858.....	\$500
66.....	\$170	171.....	\$400	268.....	\$160	361.....	\$80	471...-	\$1,000	571.....	\$450	660...-	\$1,000	750.....	\$160		
67.....	\$180	172...-	\$1,100	271.....	\$89	362...-	\$1,200	472.....	\$270	572.....	\$800	662.....	\$210	753.....	\$950		
68.....	\$180	173...-	\$1,100	273.....	\$200	363...-	\$1,700	473.....	\$190	573...-	\$1,700	663.....	\$500	755.....	\$625		
69.....	\$150	175.....	\$150	275.....	\$200	364...-	\$1,100	474.....	\$210	574.....	\$500	664...-	\$1,000	757.....	\$150		
70.....	\$100	176.....	\$220	276.....	\$140	365.....	\$120	475.....	\$375	575...-	\$1,300	668.....	\$320	759.....	\$425		
71.....	\$90	177.....	\$140	277.....	\$440	366.....	\$90	477.....	\$160	576...-	\$3,000	669.....	\$350	763...-	\$1,150		
72.....	\$130	179...-	\$1,600	278.....	\$180	373.....	\$520	478.....	\$260	577.....	\$200	670.....	\$320	764...-	\$2,000		
73.....	\$160	180...-	\$1,400	279.....	\$350	375.....	\$220	480.....	\$170	578.....	\$150	672.....	\$450	765.....	\$700		
74.....	\$130	181.....	\$220	280.....	\$140	381.....	\$280	481.....	\$150	579.....	\$140	673...-	\$1,300	766.....	\$300		
75.....	\$150	182.....	\$2,400	281.....	\$240	382.....	\$170	482.....	\$400	580.....	\$135	675.....	\$200	767.....	\$800		
76.....	\$130	183...-	\$1,300	282.....	\$320	383.....	\$420	484...-	\$1,500	582.....	\$130	676.....	\$380	768.....	\$425		
77.....	\$190	184.....	\$340	283.....	\$320	384.....	\$80	485.....	\$500	583.....	\$180	677.....	\$400	769.....	\$500		
81.....	\$220	185.....	\$600	284.....	\$420	385.....	\$70	486.....	\$925	584.....	\$150	678.....	\$375	771.....	\$875		
82.....	\$180	186.....	\$575	285.....	\$200	386.....	\$280	487.....	\$800	585.....	\$525	682.....	\$650	773.....	\$190		
83.....	\$350	187.....	\$150	286.....	\$730	388.....	\$125	489.....	\$725	586.....	\$140	684.....	\$550	774.....	\$180		
84.....	\$200	188.....	\$340	287.....	\$375	390.....	\$750	491.....	\$2,000	587.....	\$70	685.....	\$500	775.....	\$230		
85.....	\$650	189.....	\$175	288.....	\$750	392.....	\$90	493...-	\$2,100	588.....	\$100	686.....	\$500	776.....	\$190		
90.....	\$90	190.....	\$320	289.....	\$235	394.....	\$260	495...-	\$2,800	589.....	\$450	687.....	\$500	777.....	\$160		
91.....	\$550	192.....	\$200	290.....	\$95	395.....	\$100	499...-	\$9,000	590.....	\$220	688.....	\$150	778.....	\$325		
92.....	\$80	193.....	\$130	292.....	\$190	396.....	\$240	499A \$4,000		591.....	\$160	689.....	\$600	779.....	\$200		
93.....	\$80	197.....	\$500	294.....	\$220	397.....	\$200	503.....	\$160	596.....	\$150	690.....	\$875	780.....	\$500		
94.....	\$250	198.....	\$60	295.....	\$200	399.....	\$300	504.....	\$250	598.....	\$140	692.....	\$450	781.....	\$800		
96.....	\$175	199.....	\$400	296.....	\$150	402.....	\$600	505...-	\$1,070	599.....	\$150	693.....	\$825	782.....	\$250		
97.....	\$150	200.....	\$220	297.....	\$200	404.....	\$700	506.....	\$900	600.....	\$80	694...-	\$2,600	783.....	\$220		
98.....	\$60	201.....	\$150	298.....	\$240	407.....	\$150	507.....	\$170	601.....	\$420	695.....	\$395	784.....	\$200		
99.....	\$100	202.....	\$100	299.....	\$130	409.....	\$120	508.....	\$625	602.....	\$275	696...-	\$2,500	785.....	\$220		





## Postal Bidding

Ph: (09) 523 1049 / Email: info@cordys.co.nz / www.cordys.co.nz

**There is a 17.25% Buyer's Premium (including GST) on the hammer price**

Bidding Number		If applicable, otherwise we use your surname
Full Name		
Address		
Email Address		
Phone	Bus.	A/H

Lot #	Brief Description	Bid Amount \$

Please bid on my behalf at the above sale for the following lots. These bids are to be executed as cheaply as permitted by other bids or reserves. Buyers are reminded to get their bids in early to ensure their placement. I agree to comply with the Conditions of Sale as printed in this Catalogue.

SIGNATURE

Date:        /        / 2018

## Catalogue Subscription

Please return completed form to Cordy's Auckland office,  
PO Box 74071 Greenlane Auckland 1546

Please forward me the following catalogues,  
(postage within New Zealand included,  
overseas subscribers please add costs as noted):

	Tick	NZ Cost	Australia /Pacific	EUROPE /USA
Antiques, Estate Jewellery, Oriental, Tribal Art, Fine & Applied Art for Monthly Photo Catalogues		\$100	\$150	\$200

All costs noted are in New Zealand dollars. I enclose my cheque payable to John Cordy Ltd for the above ticked catalogues, totalling NZ\$\_\_\_\_\_.00

If extra catalogues in the categories chosen are produced, these will be sent to you at no extra cost. Overseas subscribers must provide a bank draft in New Zealand dollars to John Cordy Ltd.

Name

Address

City

Country

---

## Conditions of Sale

---

1. The highest bidder to be the purchaser subject to the Auctioneers having the right to refuse the bid of any person. Should any dispute arise as to the biddings, the lot in dispute to be immediately put up for sale again at the preceding bidding, or the Auctioneer may declare the purchaser which will be conclusive.
2. No person shall advance less at a bid than a sum nominated by the Auctioneer and no bid shall be retracted.
3. All lots are sold subject to the right of the seller or his agent to bid or else to impose a guide or reserve price.
4. The purchaser to fill in bidding form before the sale giving details of name, address, bank etc, and to sign such form declaring knowledge of buyers obligations. Immediately after the sale, the purchaser to pay down 10% of the purchase price in part payment and shall pay the balance within five days of the date of sale. All lots to be paid for in full and removed from Cordy's premises same week of sale.
5. The purchaser shall pay to John Cordy Limited (Cordy's) a premium of 15% of the hammer price together with GST on such premium at the current rate.
6. All lots are sold as shown and with all faults, imperfections (visible or not) and errors of description. Neither Cordy's or its vendor are responsible for errors of description or for the genuineness or authenticity of any lot or for any fault or defect in it and make no warranty whatever. Buyers proceed upon their own judgement.
7. Cordy's act as agents and have full discretion to conduct all aspects of the sale and to refuse any bidding or to withdraw any lot or lots from sale without in either case giving any reason.
8. All lots are at the buyers risk from the fall of the hammer and are to be taken away at the buyers expense immediately after the sale. Cordy's will not be responsible if any lot is lost, stolen, damaged or destroyed after the sale. If the lots are not cleared and paid for the same week of the sale they may then be sold immediately either publicly or by private treaty, without notice being given to the defaulter.
9. Upon failure of the purchaser to comply with any of the above conditions, the money deposited in part payment shall be forfeited and the defaulter shall make good any loss arising from the re-sale together with the charges and expenses in respect of both sales.
10. No goods are to be removed while selling is in progress. Receipted invoices must be produced prior to delivery of any lot.
11. The Auctioneers reserve the right to request identification in the case of any purchaser not known to the Auctioneer who pays by cheque and can insist on cash or a bank cheque.
12. Charging to credit cards or payment by overseas cheques will not be accepted as means of payment.
13. No person purchasing an item which falls within the provisions of the Antiquities Act 1975 or the Arms Act 1958 shall be entitled to take possession of the item unless and until such person has produced to Cordy's a licence under the appropriate Act.
14. All lots to be paid for in full and removed from the premises the same week of the sale.
15. The buyer shall be responsible for any removal or storage charges on any lot not taken away the same week of the sale. If for any reason storage is not available at Cordy's premises arrangements will be made to transport and store uncollected goods elsewhere solely at the buyers expense. Cordy's will not be liable to the Purchaser for them in any respect.
16. The Auctioneer cannot be held responsible for any injury or damage to persons or property through attempts to fire firearms which are sold as collectors items only.
17. All electrical goods are sold on the basis of their decorative value only and should be assumed not to be operative. It is essential that prior to any intended use, the electrical system is checked and approved by a qualified electrician.

### Important Notice

All lots sold 'as is' in accordance with Paragraph 6 of the Conditions of Sale. Intending buyers should always satisfy themselves as to the condition and description of any lot and their attention is drawn to Paragraph 6.

---

## Postal Bids

---

Instructions to bid at sales are accepted by Cordy's and are carried out free of charge. Lots will always be bought as favourably as allowed by other such bids, bidding in the saleroom and any reserve. VENDORS are requested to read and are bound by the Conditions

of Sale printed on the reverse side of Cordy's Contract to Sell. PRESALE ESTIMATES are intended as a guide only. Cordy's staff are available during viewing times to assist prospective buyers with estimates and auction room procedures.

---

## Charges and Commissions

---

1. All lots sold with hammer price between \$1.00 to \$99.00 will be charged at 20% commission plus GST.
2. All lots sold with hammer price \$100.00 and over will be charged at 15% commission plus GST.

**A buyers premium of 15% will be charged and GST at the current rate will be charged on the premium.**  
**All lots sold are to be paid in full and removed from Cordy's premises the same week of sale.**

---

## General Information

---

INSPECTIONS are made and advice given concerning the sale of Antiques and Works of Art free of charge at Cordy's in Auckland, and for a reasonable fee elsewhere.

VALUATIONS for insurance, probate or family division are undertaken on either a quotation basis or a small percentage plus travelling expenses.

IF BUYING FOR EXPORT, please enquire as to GST status of vendors.

INSTRUCTIONS to bid at sales are accepted by Cordy's and carried out free of charge. Lots will always be bought as cheaply as is allowed by the bidding in the saleroom and any reserves imposed.



## Upcoming Auctions

### 2018

19th March	Estate/Collectable Auction	View Friday & Monday prior
<b>27th March</b>	<b>Antique &amp; Art Auction</b>	<b>Entries close 2nd March</b>
3rd April	Estate/Collectable Auction	View day of auction only
9th April	Estate/Collectable Auction	View Friday & Monday prior
16th April	Estate/Collectable Auction	View Friday & Monday prior
<b>24th April</b>	<b>Antique &amp; Art Auction</b>	<b>Entries close 29th March</b>
30th April	Estate/Collectable Auction	View Monday only prior
7th May	Estate/Collectable Auction	View Friday & Monday prior
14th May	Estate/Collectable Auction	View Friday & Monday prior
<b>22nd May</b>	<b>Antique &amp; Art Auction</b>	<b>Entries close 27th April</b>
28th May	Estate/Collectable Auction	View Friday & Monday prior
5th June	Estate/Collectable Auction	View Friday & Tuesday prior
11th June	Estate/Collectable Auction	View Friday & Monday prior
<b>19th June</b>	<b>Antique &amp; Art Auction</b>	<b>Entries close 25th May</b>
25th June	Estate/Collectable Auction	View Friday & Monday prior
2nd July	Estate/Collectable Auction	View Friday & Monday prior
9th July	Estate/Collectable Auction	View Friday & Monday prior
<b>17th July</b>	<b>Antique &amp; Art Auction</b>	<b>Entries close 22nd June</b>
23rd July	Estate/Collectable Auction	View Friday & Monday prior
30th July	Estate/Collectable Auction	View Friday & Monday prior

### JOHN CORDY LIMITED

FINE ART AUCTIONEERS AND APPRAISERS

180 GREAT SOUTH ROAD, REMUERA, AUCKLAND 1051, NEW ZEALAND

P.O. BOX 74071 GREENLANE PHONE (09)523-1049 FAX (09)520-7186

EMAIL [info@cordys.co.nz](mailto:info@cordys.co.nz) WEBSITE [www.cordys.co.nz](http://www.cordys.co.nz)





725



726



727



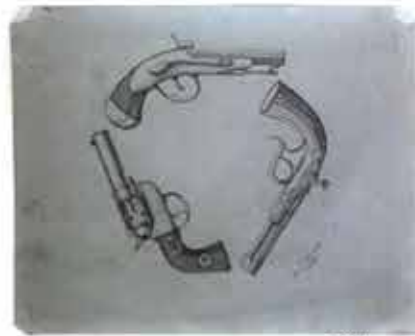
728



703



732



733



744



752



753



755



750



756



757



763



774



764



765



766





768



769



770



786



787



788



789



773



731



790



795



796



798



799



800



805