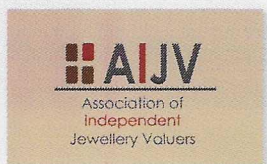


New Zealand Jewellery Valuations Ltd

CB350-10

281



Appraisal #JT 006421104000

STORE: Retail New Stock
Basis of Value for this Item: RV New

Purpose of Appraisal: **Retail Market Value**
Function of Appraisal: **Sale of Jewellery**

One stamped 18ct white gold Modern Lady's combination cast & assembled Diamond Multi-Cluster Bracelet with a rhodium plated finish. Condition is new.

18.0 cm in length x 12.4 mm wide; comprising fourteen circular clusters, each with a central micro-claw set cluster and channel/micro-claw set surrounds, pillar sides and pierced decorative linings. Secured with a push-in concealed clasp and one safety clip.

Note: this is an unsighted, updated valuation of 006418283007. Reported in new condition.

Identified with markings of "750 D1000". Containing:

Three hundred seventy-eight cast-in set round brilliant cut diamonds, measuring 1.80 - 1.40 x 0.96mm (depth est.) stated total weight of 378 Stones = 5.59ct.

Colour **F - H**
Clarity **SI to I-2**
Cut **Good**

Three hundred eight cast-in set baguette cut (tapered) diamonds, measuring 2.10 x 1.80 x 1.54mm (depth est.) stated total weight of 308 Stones = 4.41ct. Many have been calibre' cut to fit the curves..

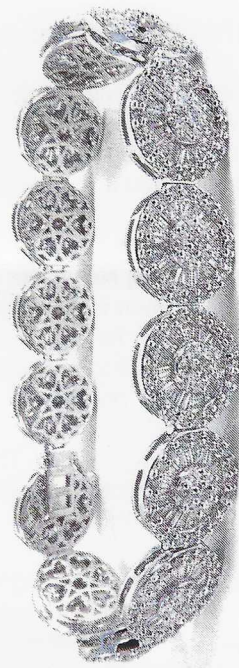
Colour **D - F**
Clarity **VS to I-1**

Total Weight of Diamonds **10.00ct.**
Total Weight of Bracelet **32.70gm**


Total Retail Market Value \$ 44000.00

Comments

Economic Factors: GST=15%, US\$/oz Gold, 1744, Plat 1203, Pall 2639, Sil 25.25, NZ\$1= US\$0.70 & AU\$0.92.



Date: April 14, 2021


Jill Towers, F.G.A., D.G.A., B.Sc.
Gemmologist/Jewellery Valuer.